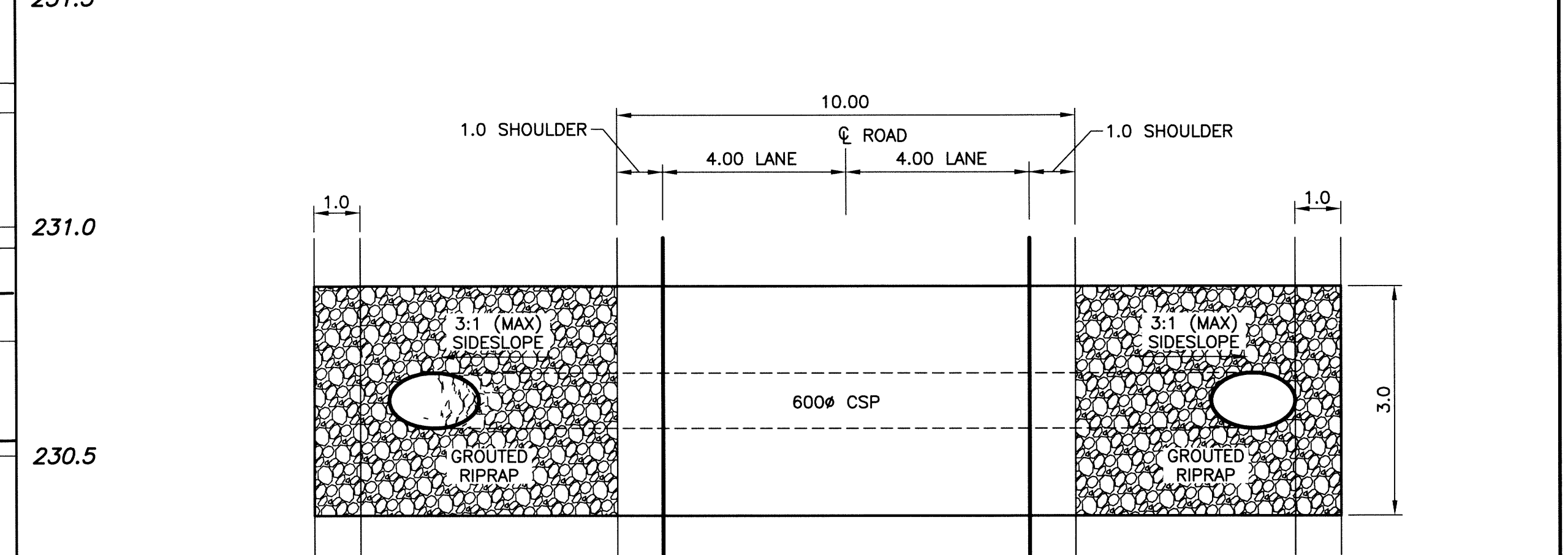
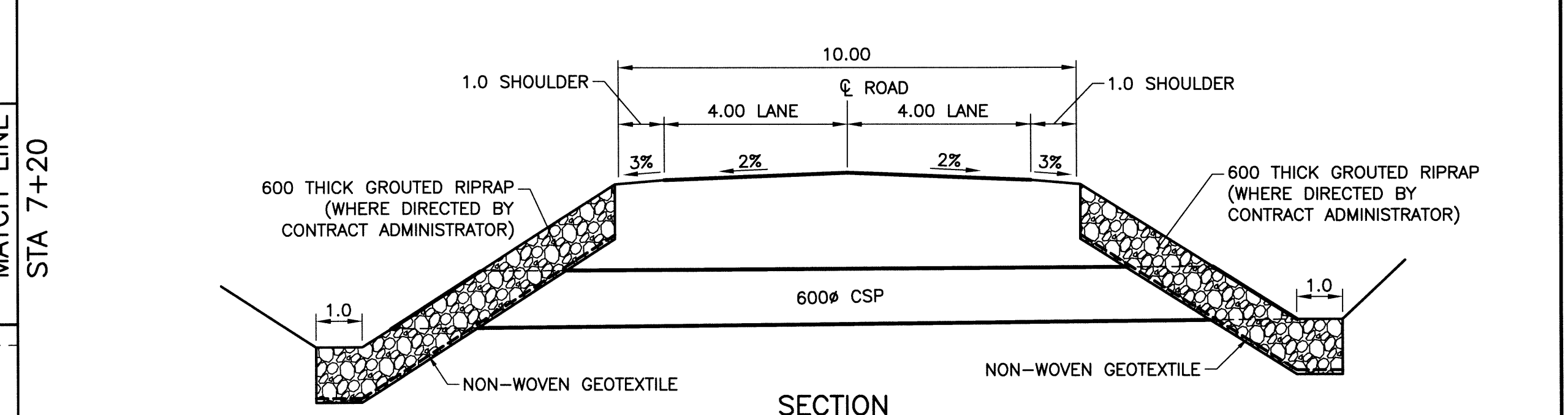


DESIGN ROADWAY SECTION
SCALE: NTS

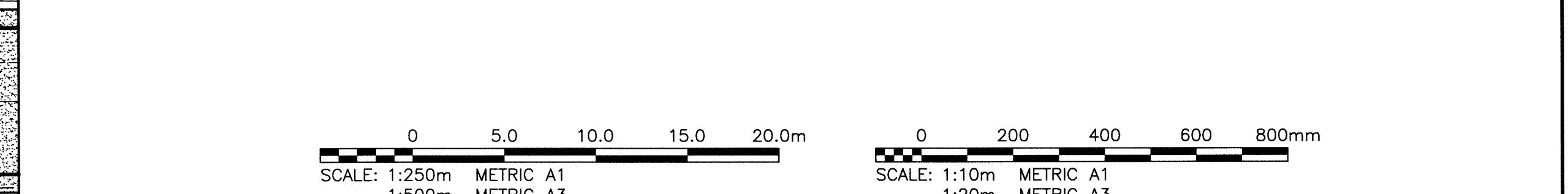


PLAN



SECTION

GRADED RIPRAP DETAIL
N.T.S.



- NOTES:**
1. ALL WORKS TO BE IN ACCORDANCE WITH THE LATEST REVISION OF THE CITY OF WINNIPEG STANDARD CONSTRUCTION SPECIFICATIONS.
 2. STATION CHAINAGE IS BASED ON CENTRELINE OF PROPOSED ROADWAY.
 3. REGRADE EXISTING PRIVATE APPROACHES AS REQUIRED.
 4. CONTACT MANITOBA HYDRO TO LOWER FIBRE OPTIC CABLE WHERE REQUIRED.
 5. REGRADE EXISTING DITCHES AS DIRECTED BY CONTRACT ADMINISTRATOR.
 6. RENEW EXISTING APPROACHES AS DIRECTED BY CONTRACT ADMINISTRATOR.
 7. NEW CULVERTS TO BE INSTALLED UNDER ALL APPROACHES AS DIRECTED BY CONTRACT ADMINISTRATOR.
 8. CHIP-SEAL SURFACE TREATMENT ON APPROACHES AND TRAFFIC LANE ONLY.

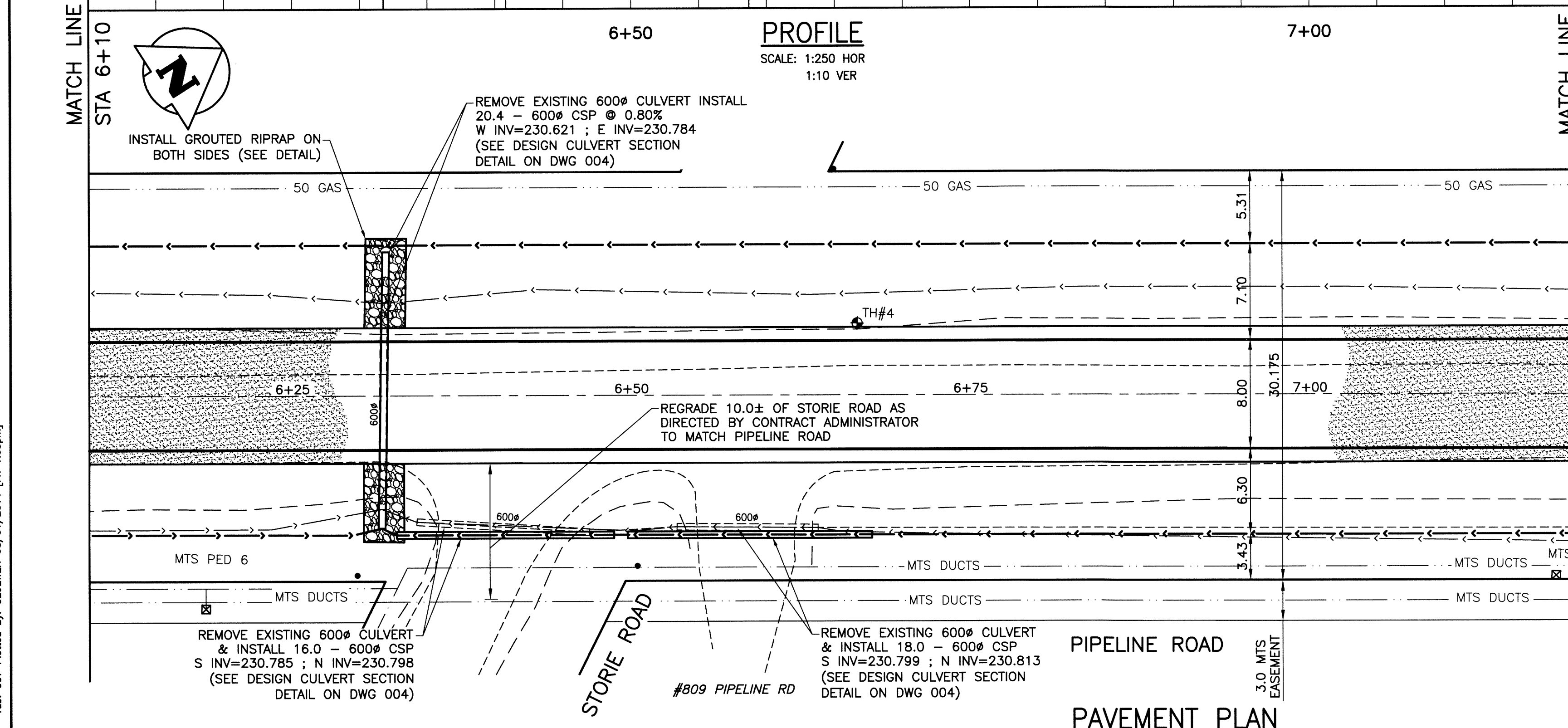
APEGM
Certificate of Authorization
KGS Group
No. 245

METRIC
WHOLE NUMBERS INDICATE MILLIMETRES
DECIMALIZED NUMBERS INDICATE METRES

WARNING

1. NOTIFY THE GAS COMPANY OF THE PROPOSED LOCATION OF EXCAVATION.
2. TAKE PRECAUTION TO AVOID DAMAGE TO GAS COMPANY INSTALLATIONS.
3. SEE PROVINCIAL REGULATION 210/72 FOR DETAILS.
4. AVOID DAMAGE TO EXISTING MANITOBA HYDRO EASEMENT WITHIN THE LIMITS OF CONSTRUCTION.
5. TAKE PRECAUTION TO AVOID DAMAGE TO MTS UNDERGROUND CABLES.

PROPERTY LIMITS DELINEATION
DELINEATION OF PROPERTY LIMITS AS SHOWN ON THIS DWG DOES NOT REPRESENT A "LEGAL SURVEY". KGS GROUP MAKES NO REPRESENTATION OR WARRANTY AS TO THE ACCURACY OF PROPERTY LIMITS DELINEATED ON THIS DWG, NOR ON THE DIMENSIONAL ACCURACY OF DWG FEATURES RELATIVE TO THOSE PROPERTY LIMITS.



PAVEMENT PLAN
SCALE: 1:250 HOR

300 L/S	LAND DRAINAGE SEWER	300 L/S	BACK OF CURB
250 W/S	WASTE WATER SEWER	250 W/S	CONCRETE
	GAS		GRAVEL ROAD
	HYDRO		SHOULDER
	M.T.S.		DITCH
150 W/W	WATERMAIN	150 W/W	SIDEWALK
	HYDRANT		PROPERTY LINE
	VALVE		CULVERT
	MANHOLE		GUY WIRE
	CATCH BASIN		TREE
	CURB INLET		SURVEY BAR
	LIGHT STANDARD		GEODETIC BENCHMARK
	POLES		ELEVATION
EXISTING	LEGEND-PLAN	PROPOSED	LEGEND-PLAN
		EXISTING	LEGEND-PROFILE
		PROPOSED	PROPOSED

LOCATION APPROVED UNDERGROUND STRUCTURES

SUPV. U/G STRUCTURES COMMITTEE DATE

NOTE:
LOCATION OF UNDERGROUND STRUCTURES AS SHOWN ARE BASED ON THE BEST INFORMATION AVAILABLE BUT NO GUARANTEE IS GIVEN THAT ALL EXISTING UTILITIES ARE SHOWN OR THAT THE GIVEN LOCATIONS ARE EXACT. CONFIRMATION OF EXISTENCE AND EXACT LOCATION OF ALL SERVICES MUST BE OBTAINED FROM THE INDIVIDUAL UTILITIES BEFORE PROCEEDING WITH CONSTRUCTION.

B.M. KGS BASE ELEV. DRAWING BASED ON C.S.R.S. NAD 83 SYSTEM, UTM GRID

KGS GROUP CONSULTING ENGINEERS

DESIGNED BY MK CHECKED BY [Signature]
DRAWN BY DMW APPROVED BY [Signature]

HOR. SCALE: 1:250
VERTICAL: 1:50

RELEASED FOR CONSTRUCTION: [Signature]
DATE: 2014/06/03

ENGINEER'S SEAL
M. KNYAZHER
Member 31158
CONSULTANT DRAWING NO. 14-0107-010-007

ISSUED FOR TENDER 14/08/01
NO. REVISIONS DATE BY

U:\PNS\14-0107-010\14-0107-010-CALL.dwg - Tab: 007 Plotted By: GLOEMEN 08/01/2014 [Fr: 1:03pm]