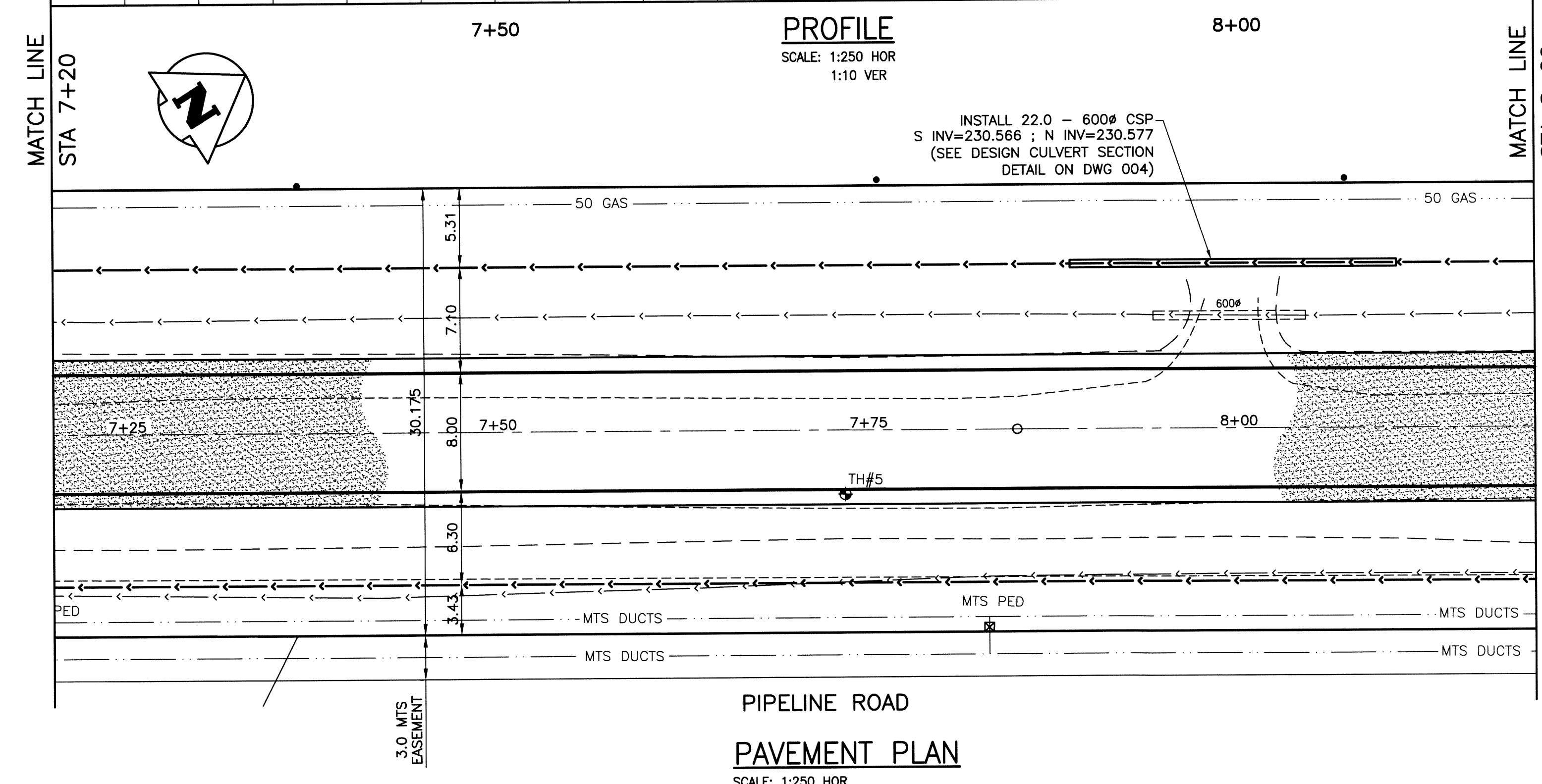
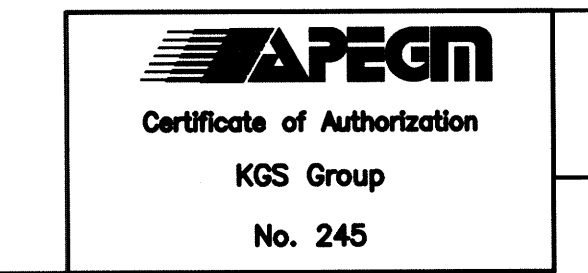


DESIGN ROADWAY SECTION
SCALE: NTS



- NOTES:**
1. ALL WORKS TO BE IN ACCORDANCE WITH THE LATEST REVISION OF THE CITY OF WINNIPEG STANDARD CONSTRUCTION SPECIFICATIONS.
 2. STATION CHAINAGE IS BASED ON CENTRELINE OF PROPOSED ROADWAY.
 3. REGRADE EXISTING PRIVATE APPROACHES AS REQUIRED.
 4. CONTACT MANITOBA HYDRO TO LOWER FIBRE OPTIC CABLE WHERE REQUIRED.
 5. REGRADE EXISTING DITCHES AS DIRECTED BY CONTRACT ADMINISTRATOR.
 6. RENEW EXISTING APPROACHES AS DIRECTED BY CONTRACT ADMINISTRATOR.
 7. NEW CULVERTS TO BE INSTALLED UNDER ALL APPROACHES AS DIRECTED BY CONTRACT ADMINISTRATOR.
 8. CHIP-SEAL SURFACE TREATMENT ON APPROACHES AND TRAFFIC LANE ONLY.



PROPERTY LIMITS DELINEATION
DELINEATION OF PROPERTY LIMITS AS SHOWN ON THIS DWG DOES NOT REPRESENT A "LEGAL SURVEY". KGS GROUP MAKES NO REPRESENTATION OR WARRANTY AS TO THE ACCURACY OF PROPERTY LIMITS DELINEATED ON THIS DWG, NOR ON THE DIMENSIONAL ACCURACY OF DWG FEATURES RELATIVE TO THOSE PROPERTY LIMITS.

METRIC
WHOLE NUMBERS INDICATE MILLIMETRES
DECIMALIZED NUMBERS INDICATE METRES

WARNING

1. NOTIFY THE GAS COMPANY OF THE PROPOSED LOCATION OF EXCAVATION.
2. TAKE PRECAUTION TO AVOID DAMAGE TO GAS COMPANY INSTALLATIONS.
3. SEE PROVINCIAL REGULATION 210/72 FOR DETAILS.
4. AVOID DAMAGE TO EXISTING MANITOBA HYDRO EASEMENT WITHIN THE LIMITS OF CONSTRUCTION.
5. TAKE PRECAUTION TO AVOID DAMAGE TO MTS UNDERGROUND CABLES.

EXISTING	LEGEND-PLAN	PROPOSED	EXISTING	LEGEND-PLAN	PROPOSED	EXISTING	LEGEND-PROFILE	PROPOSED
300 LBS	LAND DRAINAGE SEWER	300 LBS	---	BACK OF CURB	---	---	---	---
250 WWS	WASTE WATER SEWER	250 WWS	---	CONCRETE	---	---	---	---
---	GAS	---	---	GRAVEL ROAD	---	---	---	---
---	HYDRO	---	---	SHOULDER	---	---	---	---
---	M.T.S.	---	---	DITCH	---	---	---	---
150 WM	WATERMAIN	150 WM	---	SIDEWALK	---	---	---	---
---	HYDRANT	---	---	PROPERTY LINE	---	---	---	---
---	VALVE	---	---	CULVERT	---	---	---	---
---	MANHOLE	---	---	GUY WIRE	---	---	---	---
---	CATCH BASIN	---	---	TREE	---	---	---	---
---	CURB INLET	---	---	SURVEY BAR	---	---	---	---
---	LIGHT STANDARD	---	---	GEODETIC BENCHMARK	---	---	---	---
---	POLES	---	---	ELEVATION	---	---	---	---
---	---	---	---	---	---	---	---	---

LOCATION APPROVED UNDERGROUND STRUCTURES

SUPV. U/G STRUCTURES COMMITTEE DATE

NOTE:
LOCATION OF UNDERGROUND STRUCTURES AS SHOWN ARE BASED ON THE BEST INFORMATION AVAILABLE BUT NO GUARANTEE IS GIVEN THAT ALL EXISTING UTILITIES ARE SHOWN OR THAT THE GIVEN LOCATIONS ARE EXACT. CONFIRMATION OF EXISTENCE AND EXACT LOCATION OF ALL SERVICES MUST BE OBTAINED FROM THE INDIVIDUAL UTILITIES BEFORE PROCEEDING WITH CONSTRUCTION.

NO.	REVISIONS	DATE	BY
0	ISSUED FOR TENDER	14/08/01	---

B.M. KGS BASE ELEV. _____

DRAWING BASED ON C.S.R.S. NAD 83 SYSTEM, UTM GRID.

KGS GROUP CONSULTING ENGINEERS

DESIGNED BY: MK
DRAWN BY: DMW
CHECKED BY: [Signature]
APPROVED BY: [Signature]

HOR. SCALE: 1:250
VERTICAL: 1:50

RELEASED FOR CONSTRUCTION: _____

DATE: 2014/06/03

ENGINEER'S SEAL

PROVINCE OF MANITOBA
REGISTERED PROFESSIONAL ENGINEER
M. KNYAZHER
Member 31158

Aug 01/2014

CONSULTANT DRAWING NO. 14-0107-010_008

THE CITY OF WINNIPEG PUBLIC WORKS DEPARTMENT ENGINEERING DIVISION

PROJECT TITLE: PIPELINE RECONSTRUCTION
PIPELINE-PL0T

STATIONING: TEMPLETON AVE TO MOLLARD AVE
STA 7+20 TO STA 8+20

SHEET OF 10
COMPUTER FILE NAME: PIPELINE-PL0T
CITY DRAWING NUMBER: 008