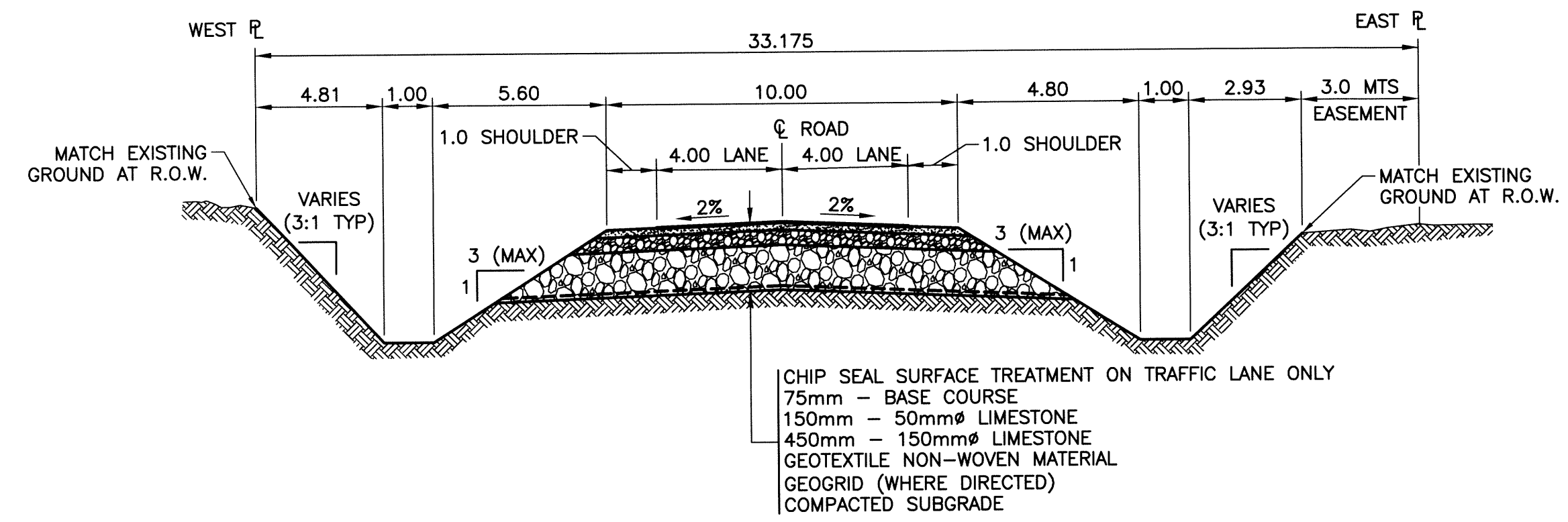
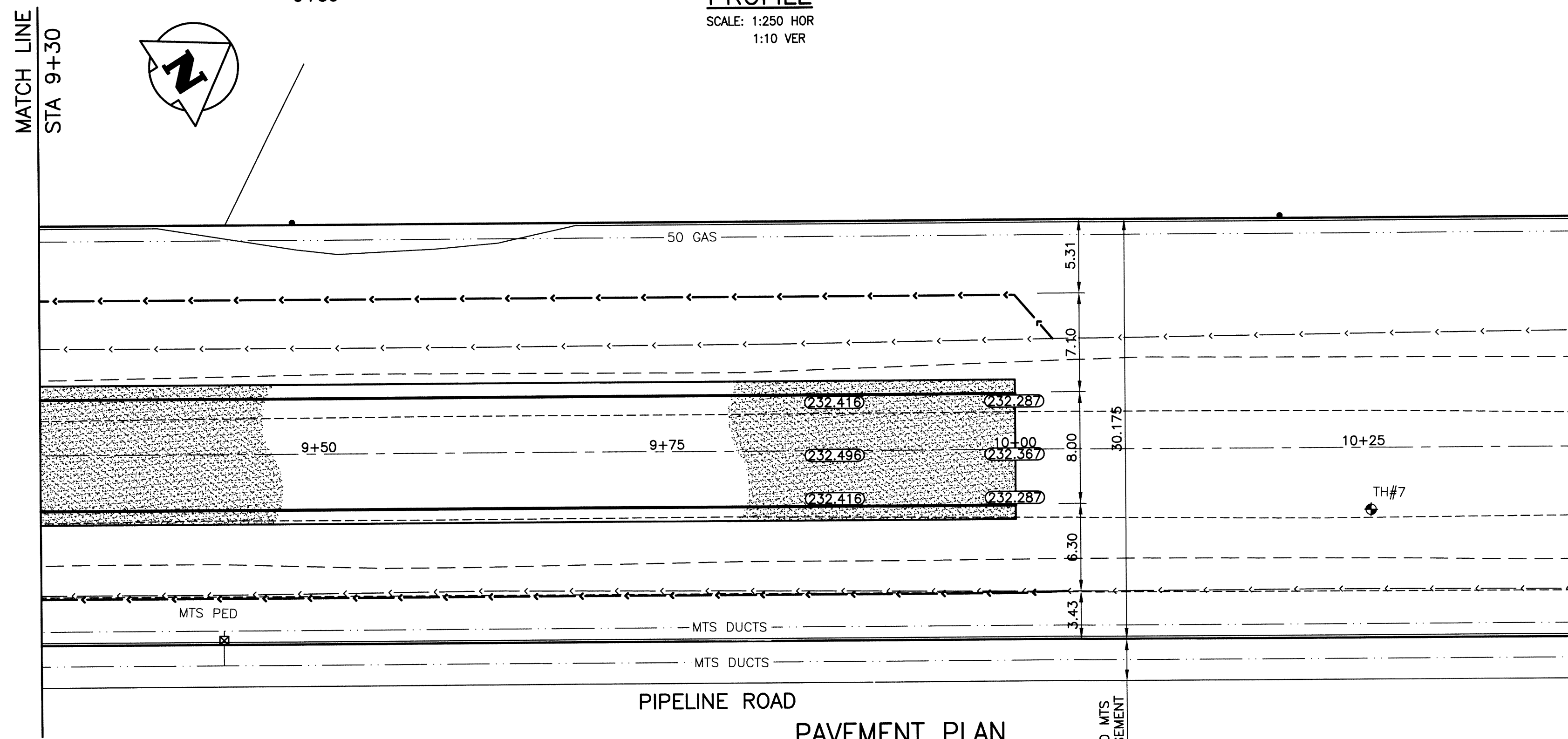


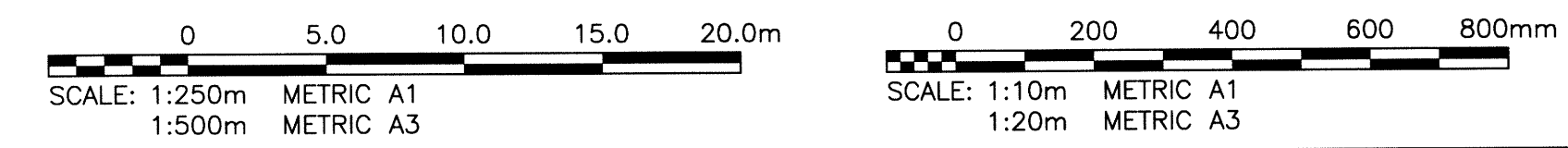
PROFILE
SCALE: 1:250 HOR
1:10 VER



DESIGN ROADWAY SECTION
SCALE: NTS



**PIPELINE ROAD
PAVEMENT PLAN**
SCALE: 1:250 HOR



NOTES:

- ALL WORKS TO BE IN ACCORDANCE WITH THE LATEST REVISION OF THE CITY OF WINNIPEG STANDARD CONSTRUCTION SPECIFICATIONS.
- STATION CHAINAGE IS BASED ON CENTRELINE OF PROPOSED ROADWAY.
- REGRADE EXISTING PRIVATE APPROACHES AS REQUIRED.
- CONTACT MANITOBA HYDRO TO LOWER FIBRE OPTIC CABLE WHERE REQUIRED.
- REGRADE EXISTING DITCHES AS DIRECTED BY CONTRACT ADMINISTRATOR.
- RENEW EXISTING APPROACHES AS DIRECTED BY CONTRACT ADMINISTRATOR.
- NEW CULVERTS TO BE INSTALLED UNDER ALL APPROACHES AS DIRECTED BY CONTRACT ADMINISTRATOR.
- CHIP-SEAL SURFACE TREATMENT ON APPROACHES AND TRAFFIC LANE ONLY.

APEGM
Certificate of Authorization
KGS Group
No. 245

METRIC
WHOLE NUMBERS INDICATE MILLIMETRES
DECIMALIZED NUMBERS INDICATE METRES

WARNING

- NOTIFY THE GAS COMPANY OF THE PROPOSED LOCATION OF EXCAVATION.
- TAKE PRECAUTION TO AVOID DAMAGE TO GAS COMPANY INSTALLATIONS.
- SEE PROVINCIAL REGULATION 210/72 FOR DETAILS.
- AVOID DAMAGE TO EXISTING MANITOBA HYDRO EASEMENT WITHIN THE LIMITS OF CONSTRUCTION.
- TAKE PRECAUTION TO AVOID DAMAGE TO MTS UNDERGROUND CABLES.

PROPERTY LIMITS DELINEATION
DELINEATION OF PROPERTY LIMITS AS SHOWN ON THIS DWG DOES NOT REPRESENT A "LEGAL SURVEY". KGS GROUP MAKES NO REPRESENTATION OR WARRANTY AS TO THE ACCURACY OF PROPERTY LIMITS DELINEATED ON THIS DWG, NOR ON THE DIMENSIONAL ACCURACY OF DWG FEATURES RELATIVE TO THOSE PROPERTY LIMITS.

300 LBS	LAND DRAINAGE SEWER	300 LBS	BACK OF CURB				
250 WWS	WASTE WATER SEWER	250 WWS	CONCRETE				
	GAS		GRAVEL ROAD				
	HYDRO		SHOULDER				
	M.T.S.		DITCH				
150 WM	WATERMAIN	150 WM	SIDEWALK				
⊕	HYDRANT	⊕	PROPERTY LINE				
⊕	VALVE	⊕	CULVERT				
⊕	MANHOLE	⊕	GUY WIRE				
⊕	CATCH BASIN	⊕	TREE				
⊕	CURB INLET	⊕	SURVEY BAR				
⊕	LIGHT STANDARD	⊕	GEODETIC BENCHMARK				
⊕	POLES	⊕	ELEVATION				
⊕	LEGEND-PLAN	⊕	LEGEND-PLAN				
⊕	PROPOSED	⊕	PROPOSED				
⊕	EXISTING	⊕	EXISTING				
⊕	LEGEND-PROFILE	⊕	LEGEND-PROFILE				
⊕	PROPOSED	⊕	PROPOSED				
⊕	EXISTING	⊕	EXISTING				

LOCATION APPROVED UNDERGROUND STRUCTURES

SUPPLY U/G STRUCTURES	DATE
COMMITTEE	
NOTE:	
LOCATION OF UNDERGROUND STRUCTURES AS SHOWN ARE BASED ON THE BEST INFORMATION AVAILABLE BUT NO GUARANTEE IS GIVEN THAT ALL EXISTING UTILITIES ARE SHOWN OR THAT THE GIVEN LOCATIONS ARE EXACT. CONFIRMATION OF EXISTENCE AND EXACT LOCATION OF ALL SERVICES MUST BE OBTAINED FROM THE INDIVIDUAL UTILITIES BEFORE PROCEEDING WITH CONSTRUCTION.	

B.M. KGS BASE ELEV.	DRAWING BASED ON C.S.R.S. NAD 83 SYSTEM, UTM GRID
ISSUED FOR TENDER	14/08/01
NO. REVISIONS	DATE BY

KGS GROUP CONSULTING ENGINEERS

DESIGNED BY	MK	CHECKED BY	BWM
DRAWN BY	DMW	APPROVED BY	PL
HOR. SCALE:	1:250	RELEASED FOR CONSTRUCTION:	
VERTICAL:	1:50	DATE	2014/06/03

ENGINEER'S SEAL

M. KHAZHER
Member
31158

CONSULTANT DRAWING NO.
14-0107-010_010

THE CITY OF WINNIPEG PUBLIC WORKS DEPARTMENT ENGINEERING DIVISION

PROJECT TITLE
PIPELINE ROAD PAVEMENT RECONSTRUCTION

TEMPLETON AVE TO MOLLARD AVE
STA 9+30 TO STA 10+00

SHEET OF	10 OF 10
COMPUTER FILE NAME	PIPELINE-PLOT
CITY DRAWING NUMBER	010

U:\PMS\14-0107-010_010_010_010.dwg - Tab: 010 Plotted By: GLOEMEN 08/01/2014 [Fri 1:05pm]