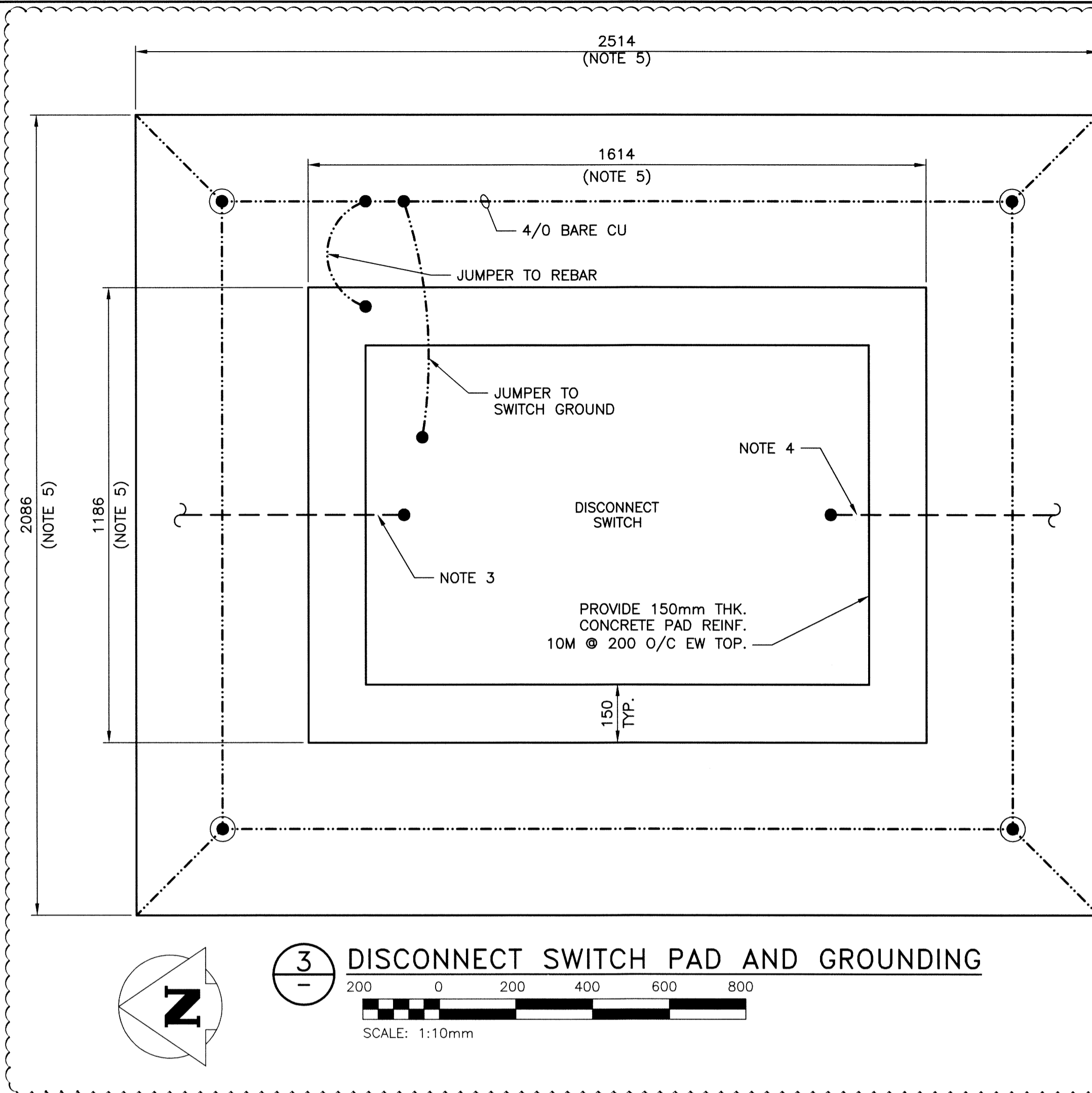
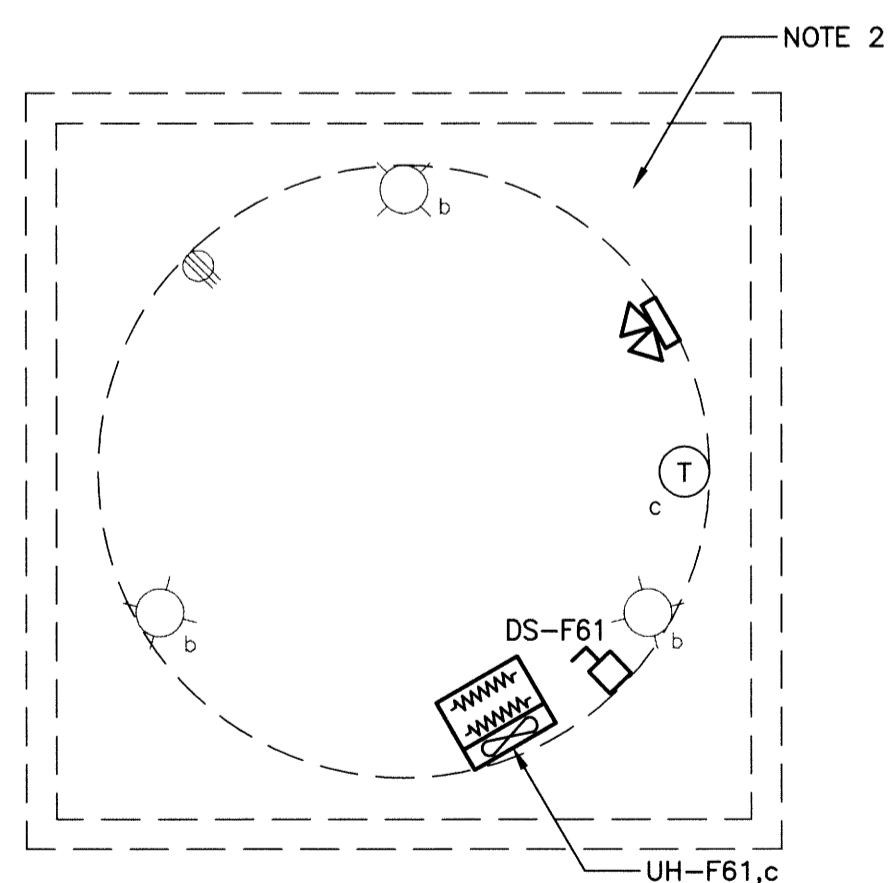


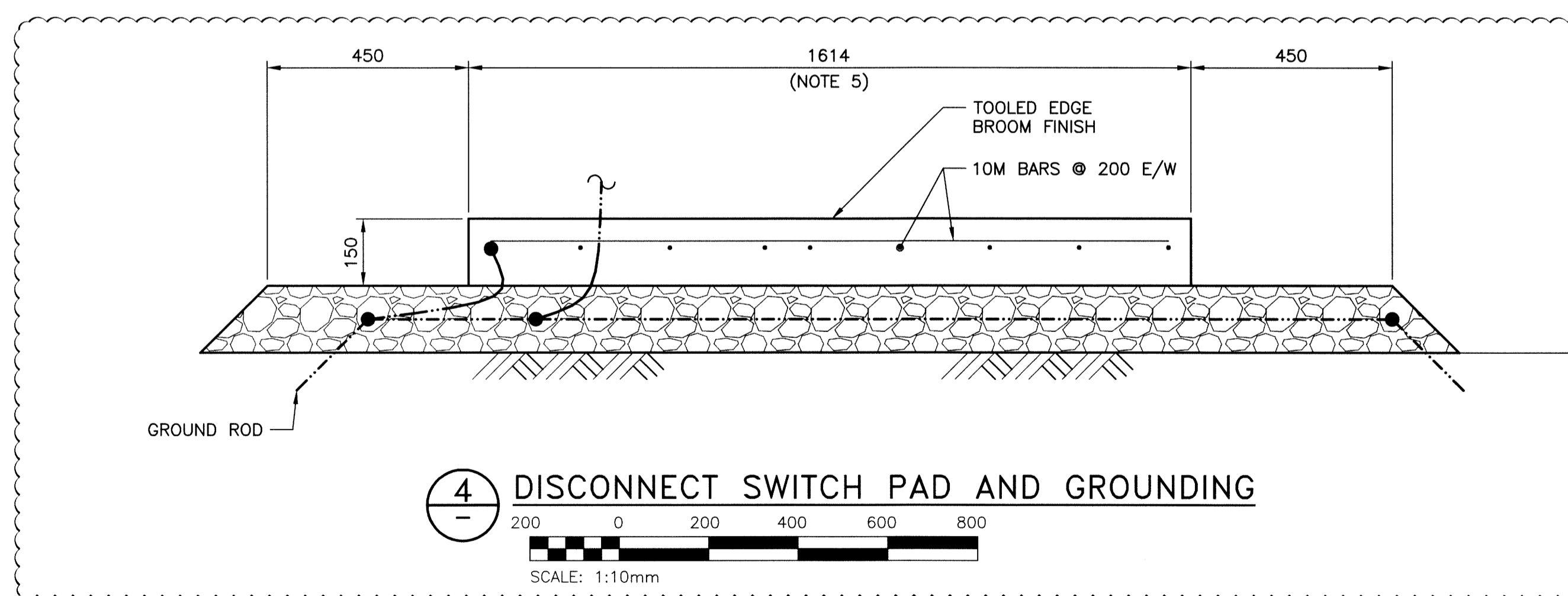
1 POWER, SYSTEMS AND LIGHTING PLAN - NEW
 SCALE: 1:50mm



3 DISCONNECT SWITCH PAD AND GROUNDING
 SCALE: 1:10mm



2 POWER, SYSTEMS AND LIGHTING PLAN LOWER LEVEL - NEW
 SCALE: 1:50mm

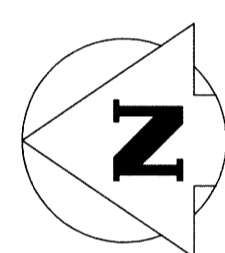
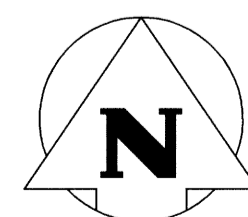


4 DISCONNECT SWITCH PAD AND GROUNDING
 SCALE: 1:10mm

- NOTES:**
- COORDINATE EQUIPMENT LOCATIONS WITH MECHANICAL DRAWINGS. REFER TO MECHANICAL DRAWING 1-0115F-M0001-001 (A-M01) FOR DETAILS.
 - HAZARDOUS AREA CLASSIFICATION IS MAINTAINED AT UNCLASSIFIED BY VENTILATING IN ACCORDANCE WITH NFPA 820.
 - RECONNECT EXISTING FEEDER TO NEW DISCONNECT SWITCH.
 - PROVIDE NEW CABLE AND CONNECT TO EXISTING TRANSFORMER.
 - DIMENSIONS BASED ON PMH-5 DISCONNECT SWITCH.
 - SUPPLY AND INSTALL ALL NEW CABLE AND CONDUIT FOR NEW EQUIPMENT.

LEGEND:

- DUPLEX RECEPTACLE
- SINGLE TWIST-LOCK RECEPTACLE
- WELDING RECEPTACLE
- SWITCH
- JUNCTION BOX
- DISCONNECT SWITCH
- 4' FLUORESCENT FIXTURE
- TELEPHONE
- EMERGENCY LIGHTING BATTERY UNIT
c/w 2 LTG. HEADS
- REMOTE EMERGENCY LIGHTING HEADS
- THERMOSTAT
x = ITEMS CONTROLLED
- 1φ MOTOR LOAD
- 3φ MOTOR LOAD
- GROUND ROD
- POWER CABLE
- GROUND CONDUCTOR



FIELD BOOK #:		DESIGNED BY DDW/MAM		CHECKED BY	
POSTED TO LBIS		DRAWN BY GCN		APPROVED BY	
1	RE-ISSUED FOR CONSTRUCTION	14/09/11	AP	HDR. SCALE	N.T.S.
0	ISSUED FOR CONSTRUCTION	14/08/18	AP	VERTICAL	N.T.S.
NO.	REVISIONS	DATE	BY	DATE	2014 01 13

ENGINEER'S SEAL

 A-E03

THE CITY OF WINNIPEG
 WATER AND WASTE DEPARTMENT

FLOOD PUMPING STATION UPGRADES
 ASSINIBOINE STATION
ELECTRICAL
 POWER, SYSTEMS AND LIGHTING PLANS

SHEET 1 OF 1
 CITY DRAWING NUMBER
 1-0115F-E0004-001