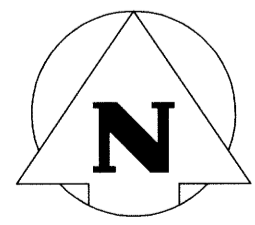
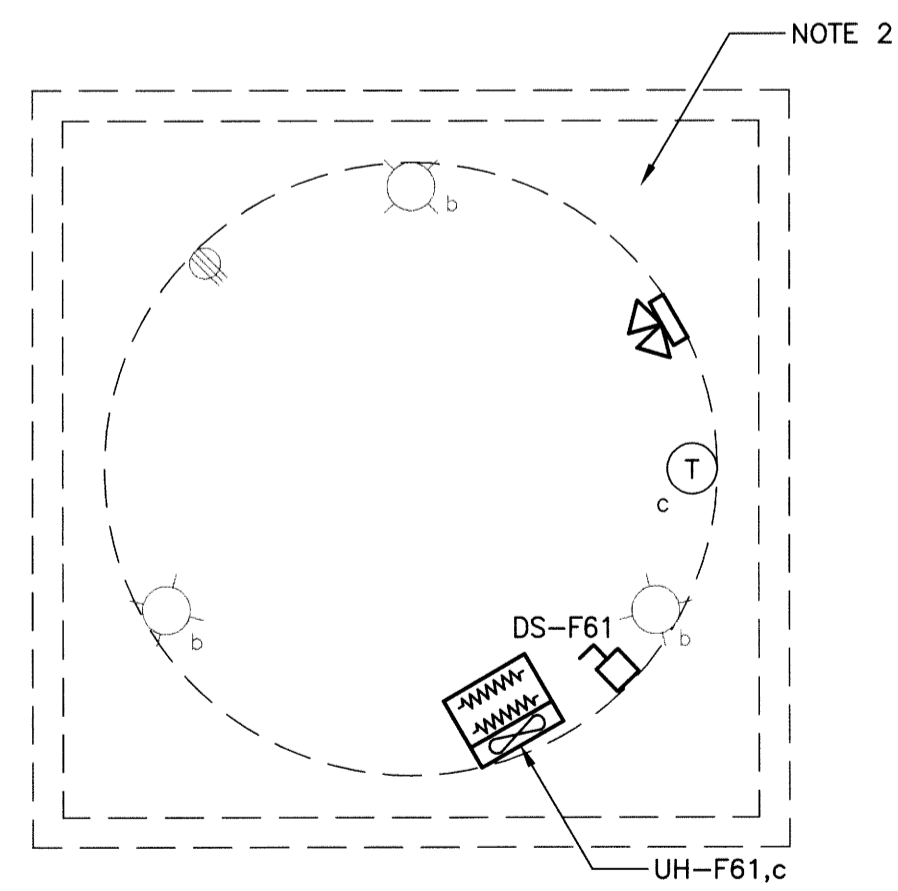


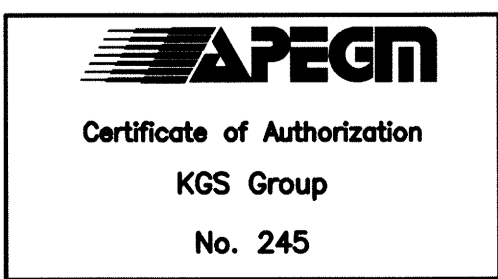
**1** POWER, SYSTEMS AND LIGHTING PLAN - NEW  
 SCALE: 1:50mm



**2** POWER, SYSTEMS AND LIGHTING PLAN LOWER LEVEL - NEW  
 SCALE: 1:50mm

- NOTES:**
- COORDINATE EQUIPMENT LOCATIONS WITH MECHANICAL DRAWINGS. REFER TO MECHANICAL DRAWING 1-0115F-M0001-001 (A-M01) FOR DETAILS.
  - HAZARDOUS AREA CLASSIFICATION IS MAINTAINED AT UNCLASSIFIED BY VENTILATING IN ACCORDANCE WITH NFPA 820.

- LEGEND:**
- DUPLEX RECEPTACLE
  - SINGLE TWIST-LOCK RECEPTACLE
  - WELDING RECEPTACLE
  - SWITCH
  - JUNCTION BOX
  - DISCONNECT SWITCH
  - 4' FLUORESCENT FIXTURE
  - TELEPHONE
  - EMERGENCY LIGHTING BATTERY UNIT  
c/w 2 LTG. HEADS
  - REMOTE EMERGENCY LIGHTING HEADS
  - THERMOSTAT  
x = ITEM(S) CONTROLLED
  - 1Ø MOTOR LOAD



NO.	REVISIONS	DATE	BY
0	ISSUED FOR CONSTRUCTION	14/08/18	AP

DESIGNED BY	CHECKED BY
DDW/MAM	
DRAWN BY	APPROVED BY
GCN	
HOR. SCALE	RELEASED FOR CONSTRUCTION
N.T.S.	
VERTICAL	DATE
N.T.S.	2014 01 13

ENGINEER'S SEAL  
  
 A-E03

**THE CITY OF WINNIPEG**  
 WATER AND WASTE DEPARTMENT

FLOOD PUMPING STATION UPGRADES  
 ASSINIBOINE STATION  
**ELECTRICAL**  
 POWER, SYSTEMS AND LIGHTING PLANS

SHEET 1 OF 1  
 CITY DRAWING NUMBER  
 1-0115F-E0004-001