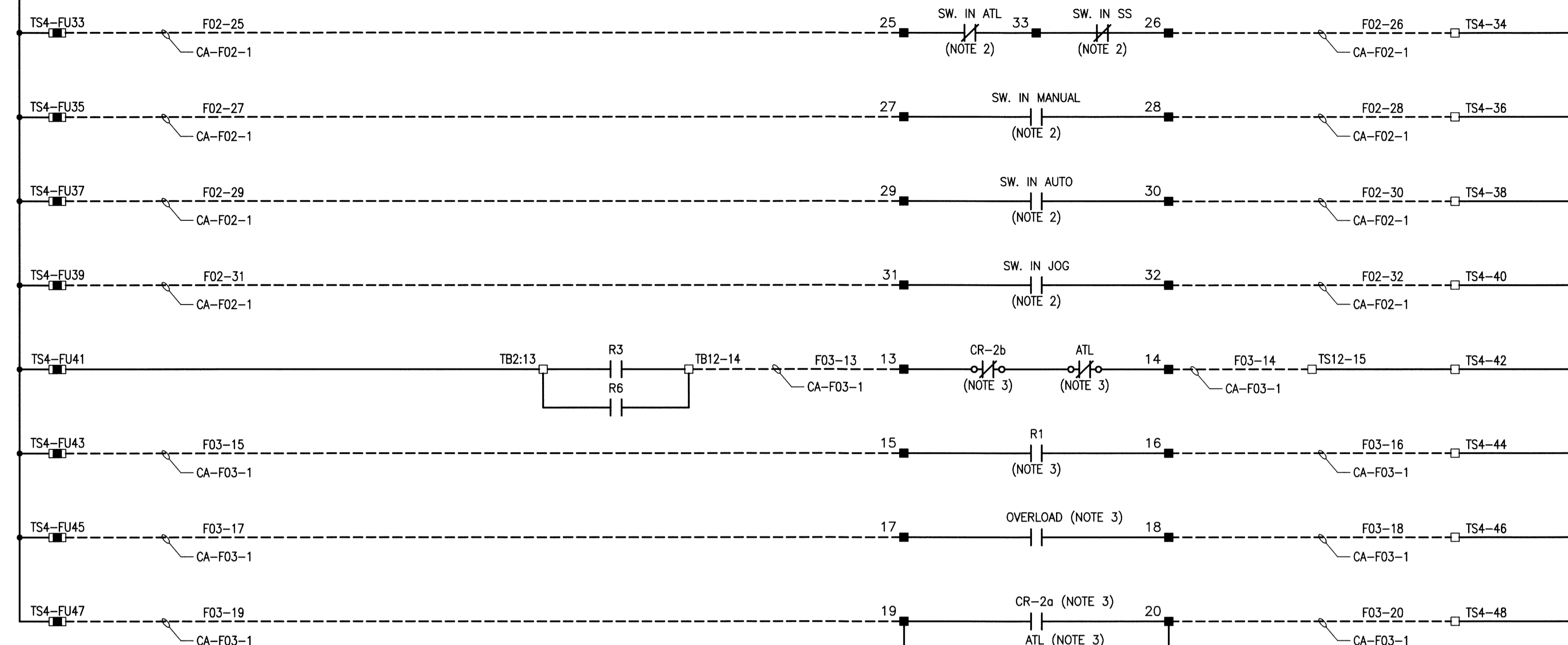


FROM TSDC-FU5
(NOTE 1)
24 VDC



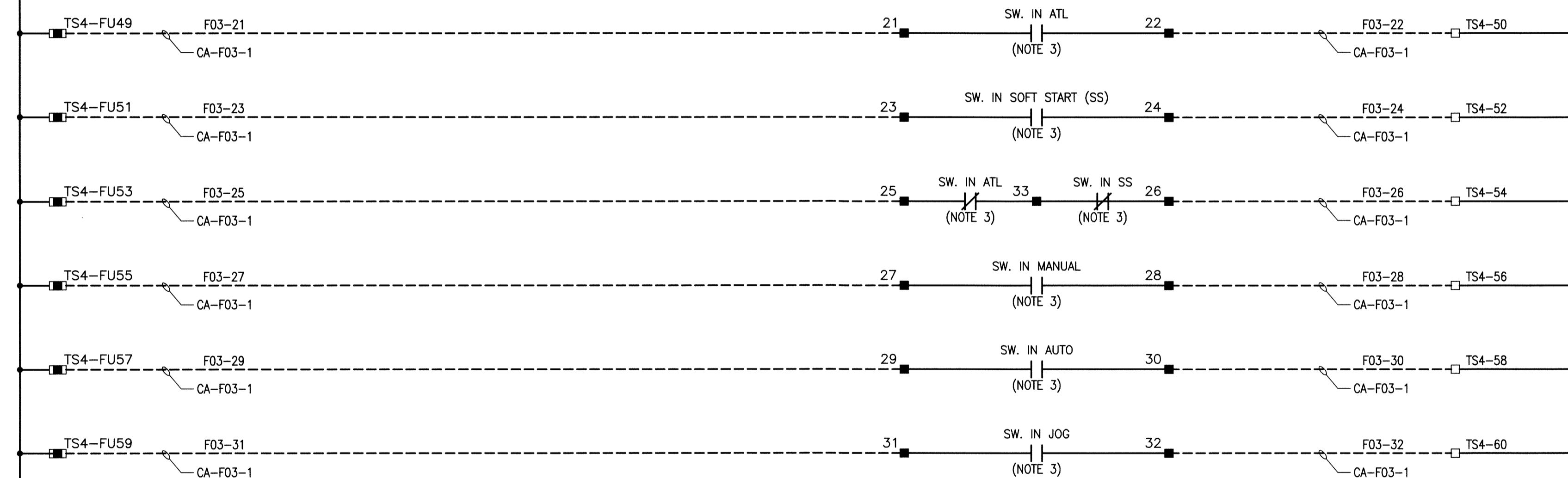
SCADAPAK 357 RTU
5606 I/O MODULE
32-PT DISCRETE
INPUT

CONNECTOR (P9)

- 0 PUMP 2 OFF HS-F02-3
- 1 PUMP 2 MANUAL HS-F02-4
- 2 PUMP 2 AUTO HS-F02-5
- 3 P-F02 SWITCH IN JOG MODE HS-F02-6
- 4 P3 FAIL YS-F03-1
- 5 P2 SS FAIL YS-F03-2
- 6 P-F03 ATL OVERLOAD STATUS YS-F03-3
- 7 P3 RUN YS-F03-4

FROM TSDC-C5
(NOTE 1)
0 VDC

FROM TSDC-FU6
(NOTE 1)
24 VDC



CONNECTOR (P10)

- 0 P3 ATL HS-F03-1
- 1 PUMP 3 SOFT START HS-F03-2
- 2 PUMP 3 OFF HS-F03-3
- 3 PUMP 3 MANUAL HS-F03-4
- 4 PUMP 3 AUTO HS-F03-5
- 5 P-F03 SWITCH IN JOG MODE HS-F03-6
- 6 SPARE
- 7 SPARE

FROM TSDC-C6
(NOTE 1)
0 VDC

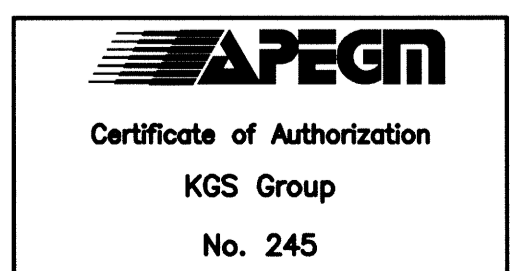
NOTES:

1. REFER TO DRAWING 1-0159F-E001-001 (M-E21.1) FOR ADDITIONAL DETAILS.
2. REFER TO PUMP P-F02 STARTER SCHEMATIC DRAWING 1-0159F-E0007-001 (M-E05) FOR ADDITIONAL DETAILS.
3. REFER TO PUMP P-F03 STARTER SCHEMATIC DRAWING 1-0159F-E0008-001 (M-E06) FOR ADDITIONAL DETAILS.
4. FINAL TERMINAL BLOCK NUMBERS FOR TERMINALS ON TERMINAL STRIP TS4 SHALL BE DETAILED ON SHOP DRAWINGS.

LEGEND:

- PANEL WIRING
- FIELD WIRING
- RTU TERMINAL
- STARTER TERMINAL
- FUSED TERMINAL

File Name: P:\Projects\2013\13-0107-026\W-E30.2.dwg - Tab: E30.2 Plotted By: dderoché 08/19/2014 [Tue 8:33am]



NO.	REVISIONS	DATE	BY
0	ISSUED FOR CONSTRUCTION	14/08/18	AP

DESIGNED BY	DDW/MAM	CHECKED BY	
DRAWN BY	GCN	APPROVED BY	
HOR. SCALE	N.T.S.	RELEASED FOR CONSTRUCTION	
DATE	2014 01 17	DATE	

ENGINEER'S SEAL

M-E30.2

THE CITY OF WINNIPEG
WATER AND WASTE DEPARTMENT

FLOOD PUMPING STATION UPGRADES
MARION STATION
ELECTRICAL
RTU PANEL - 5606 I/O BOARD NO.1
DISCRETE INPUTS

SHEET 2 OF 2
CITY DRAWING NUMBER
1-0159F-E0017-002