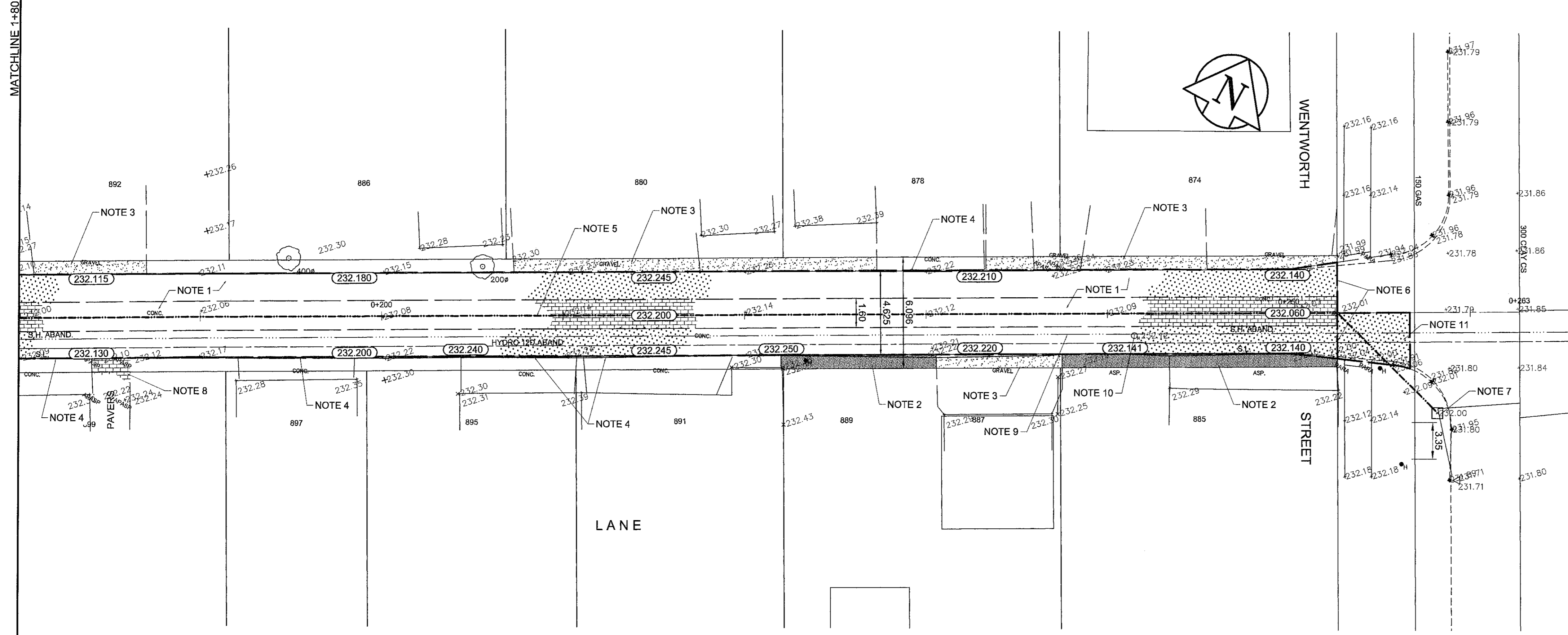
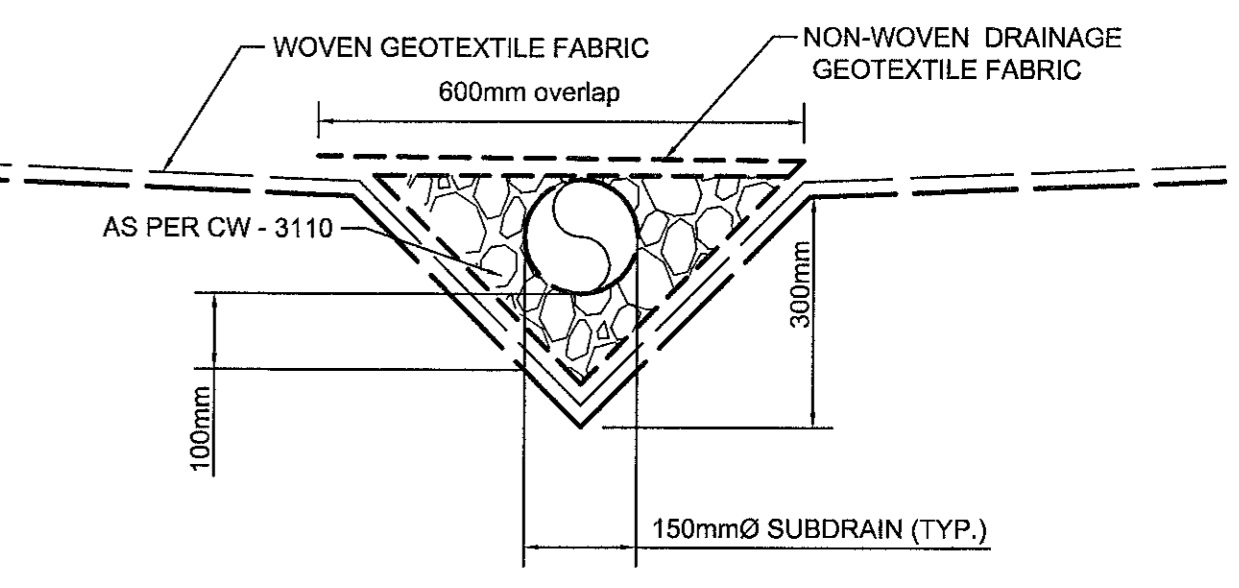
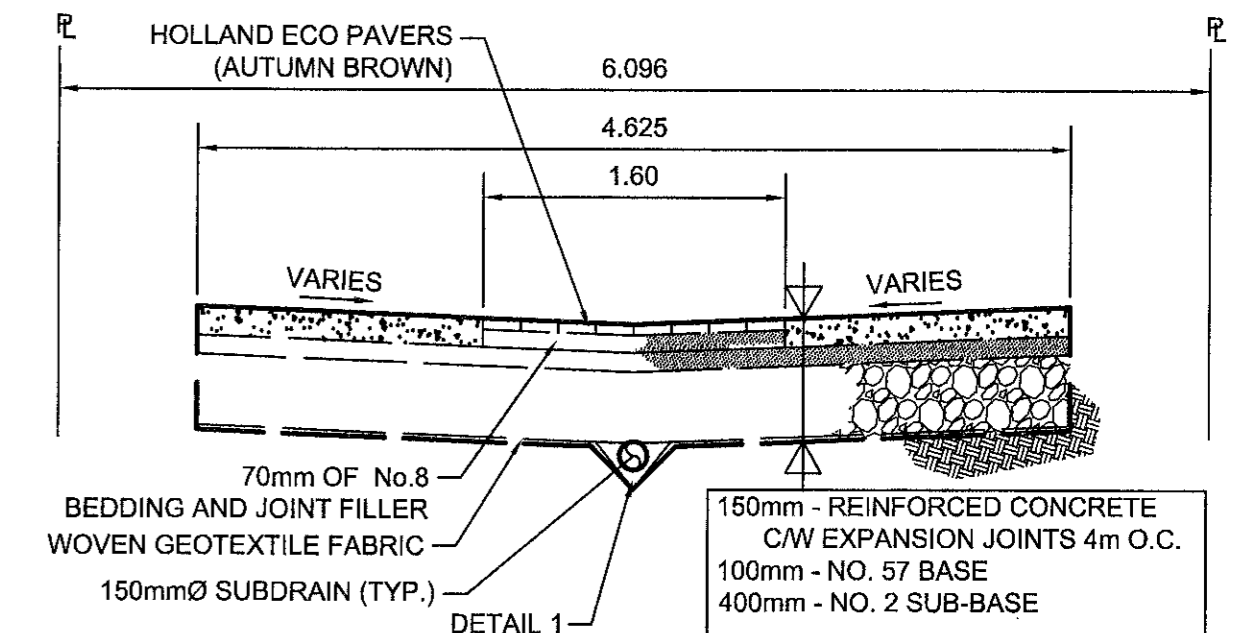


- CONSTRUCTION NOTES**
1. REMOVE EXISTING CONCRETE PAVEMENT AND CONSTRUCT NEW PAVEMENT AS PER TYPICAL SECTION
 2. REMOVE EXISTING ASPHALT PAVEMENT AND CONSTRUCT NEW ASPHALT PAVEMENT. MATCH EXISTING ASPHALT THICKNESS
 3. REGRADE EXISTING GRAVEL SURFACE WITH BASE COURSE
 4. MATCH EXISTING CONCRETE DRIVEWAY
 5. INSTALL NEW 150mm Ø SUBDRAIN
 6. TIE INTO EXISTING LANE APPROACH
 7. CONNECT NEW SUBDRAIN TO EXISTING CB.
 8. REGRADE EXISTING PAVERS.
 9. ABANDON WINNIPEG HEAT Co. DUCT WITHIN PROJECT LIMITS.
 10. ABANDON WINNIPEG HEAT Co. MANHOLE.
 11. REMOVE AND CONSTRUCT 150mm REINFORCED CONCRETE PAVEMENT.
 12. SUBDRAIN TO BE CONSTRUCTED IN ACCORDANCE WITH CW 3120 INSTALLATION OF SUBDRAINS.



150 mm W.M.	150 mm W.M.	HYDRO	PROPERTY LINE	EXISTING	PROPOSED	EXISTING	PROPOSED
WATERMAIN	HYDRANT	M.T.S.	SURVEY BAR	CONCRETE	ASPHALT	PROPERTY LINE	SURVEY BAR
VALVE	LAND DRAINAGE SEWER	CONCRETE	ELEVATION (35.750)	ASPHALT	WASTEWATER SEWER	PROPERTY LINE	ELEVATION (35.750)
300mm L.D.S.	250mm W.W.S.	CONCRETE	TREE	ASPHALT	250mm W.W.S.	PROPERTY LINE	TREE
MANHOLE	CATCH BASIN	CONCRETE	SIDEWALK RAMP	ASPHALT	MANHOLE	PROPERTY LINE	SIDEWALK RAMP
CURB INLET	JUNCTIONS	CONCRETE	CONCRETE SIDEWALK	ASPHALT	CATCH BASIN	PROPERTY LINE	CONCRETE SIDEWALK
CULVERT	GAS	CONCRETE	FENCE	ASPHALT	JUNCTIONS	PROPERTY LINE	FENCE
EXISTING	LEGEND - PLAN	PROPOSED	EXISTING	LEGEND - PLAN	PROPOSED	EXISTING	LEGEND - PROFILE

LOCATION APPROVED UNDERGROUND STRUCTURES

SUPV. U/G STRUCTURES COMMITTEE DATE

NOTE:
LOCATION OF UNDERGROUND STRUCTURES AS SHOWN ARE BASED ON THE BEST INFORMATION AVAILABLE. BUT NO GUARANTEE IS GIVEN THAT ALL EXISTING UTILITIES ARE SHOWN OR THAT THE GIVEN LOCATIONS ARE EXACT. CONFIRMATION OF EXISTENCE AND EXACT LOCATION OF ALL SERVICES MUST BE OBTAINED FROM THE INDIVIDUAL UTILITIES BEFORE PROCEEDING WITH CONSTRUCTION.

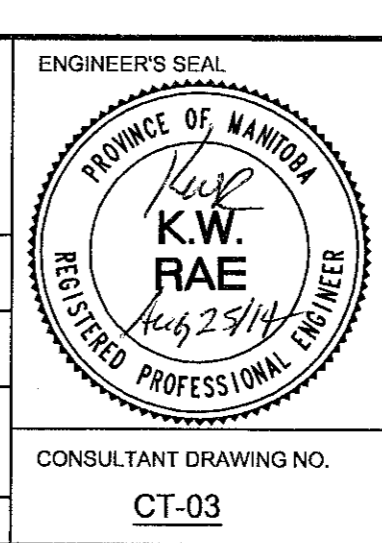
B.M. ELEV.	NO.	ISSUED FOR TENDER	DATE	BY
	0	ISSUED FOR TENDER	08/26/14	
		REVISIONS		

AECOM

DESIGNED BY: KWR
DRAWN BY: PAAP
HOR. SCALE: 1:150
VERTICAL: [Signature]

CHECKED BY: KWR
APPROVED BY: [Signature]
RELEASED FOR CONSTRUCTION BY: [Signature]

DATE: AUG 25/14



THE CITY OF WINNIPEG
PUBLIC WORKS DEPARTMENT
ENGINEERING DIVISION

ALLEY RENEWAL

LANE - SOUTH OF DORCHESTER AVENUE AND BETWEEN STAFFORD STREET AND WENTWORTH STREET
STATION 1+80 TO STATION 2+63

CITY DRAWING NUMBER
SHEET 2 OF 2

CONSULTANT DRAWING NO. CT-03

