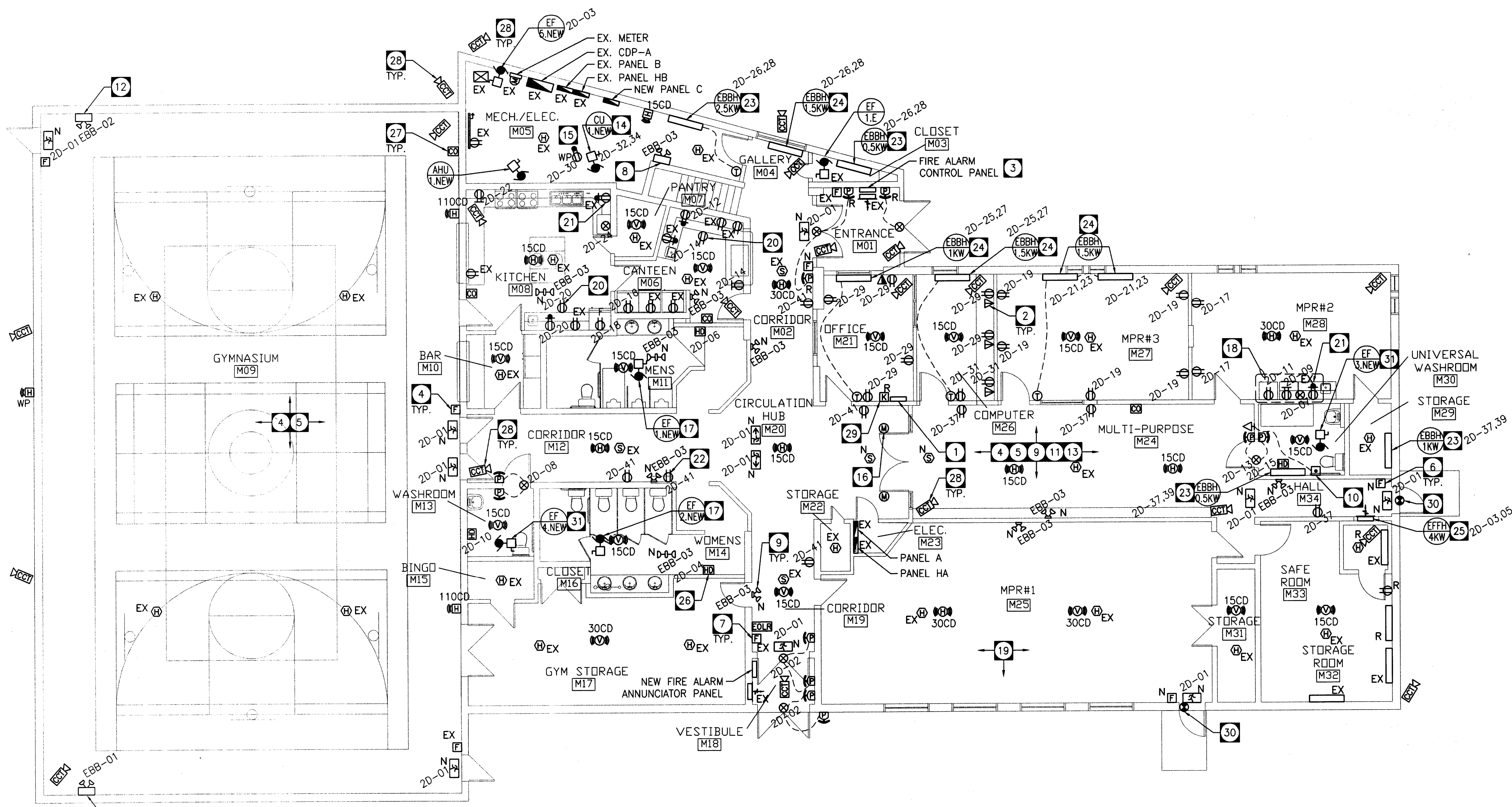
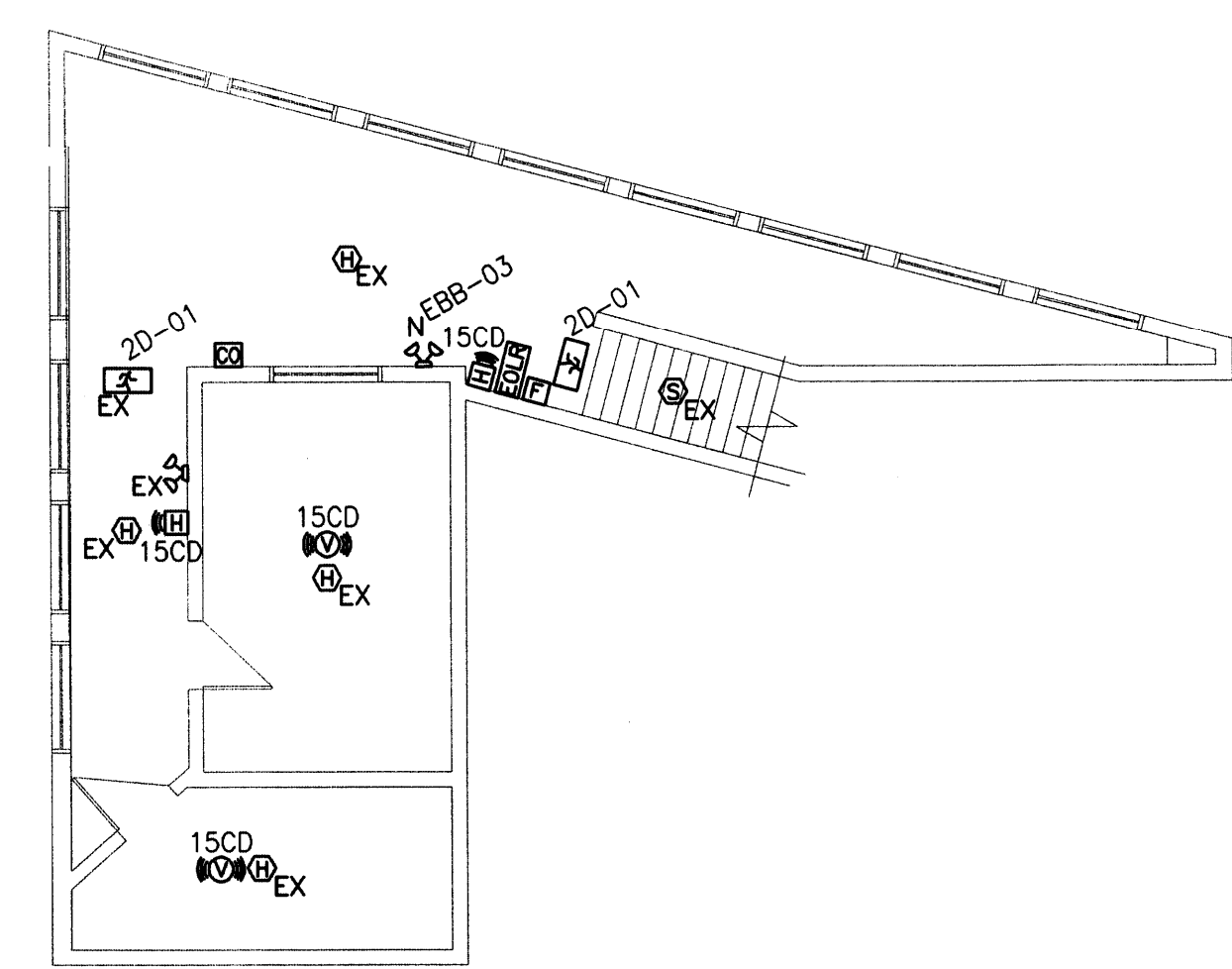


DRAWING NOTES:

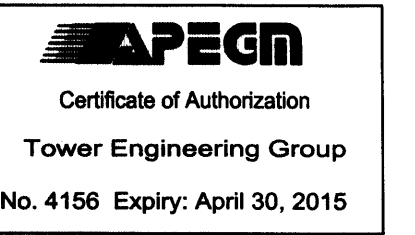
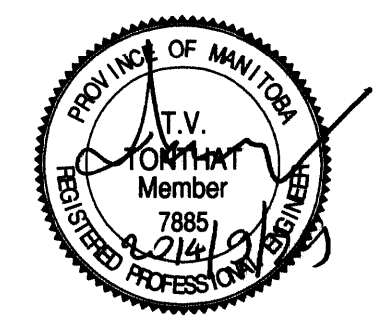
- 1 RELOCATE EXISTING VOICE/DATA RACK TO OFFICE M21. RELOCATE EXISTING DATA CONNECTION TO SERVER IN OFFICE M21.
- 2 PROVIDE CAT 5E CABLE FROM DATA OUTLET TO SERVER IN OFFICE M21.
- 3 PROVIDE NEW 8 ZONE CONVENTIONAL F/A CONTROL PANEL TO REPLACE EXISTING CONVENTIONAL PANEL.
- 4 REPLACE ALL EXISTING FIRE ALARM INITIATING DEVICES (PULL STATIONS, HEAT AND SMOKE DETECTORS) WITH NEW DEVICES. EXISTING BELLS SHALL BE REMOVED AND BLANK COVERS PROVIDED.
- 5 PROVIDE NEW HORN/STROBE AND STROBE FIRE ALARM SIGNAL DEVICES THROUGHOUT THE ENTIRE BUILDING AS SHOWN. PROVIDE SIGNAL POWER SUPPLIES AS REQUIRED. PROVIDE NEW WIRING THROUGHOUT FOR SIGNAL DEVICES. VISUAL SIGNALS SHALL BE MOUNTED AT 2.1 M TO CENTER OR CEILING MOUNTED.
- 6 WIRE AND CONNECT NEW FIRE ALARM DEVICES TO NEAREST EXISTING ZONE. COORDINATE CUTTING OF BLOCK WITH G.C. PROVIDE BLANK COVER AT EXISTING LOCATION. TYPICAL.
- 7 EXISTING FIRE ALARM PULL STATIONS SHALL BE LOWERED TO 1200 MM TO CENTER. TYPICAL. COORDINATE CUTTING OF CONCRETE BLOCK WITH G.C. SURFACE CONDUIT EXTENSION RINGS ARE NOT ACCEPTABLE.
- 8 REPLACE EXISTING BATTERY BANK EBB-03 WITH NEW. REFER TO SCHEDULES. PROVIDE 2-10 CIRCUIT EXTERNAL VOLTAGE SENSING RELAY (VSR) BOXES FOR MONITORING OF ALL CIRCUITS WHERE EMERGENCY HEADS ARE INSTALLED. ONE VSR SHALL BE NEAR PANEL B. THE OTHER VSR SHALL BE FOR PANEL A. INTERCONNECT AS REQUIRED. ACTUAL CIRCUIT NUMBERS SHALL BE CONFIRMED ON SITE AND COORDINATED WITH CONTRACT ADMINISTRATOR.
- 9 REPLACE EXISTING EMERGENCY HEADS IN ALL AREAS EXCEPT GYM WITH NEW 24V, 4W LED HEADS TYPICAL OF 10 EXISTING LOCATIONS. PROVIDE NEW REMOTE HEAD LOCATIONS AS SHOWN.
- 10 PROVIDE CALL FOR ASSISTANCE SYSTEM COMPLETE WITH:
 - EMERGENCY MUSHROOM BUTTON C/W TWIST RESET
 - INDICATING LIGHT HORN
 - 24V TRANSFORMER
- 11 REPLACE ALL EXISTING EXIT SIGNS WITH NEW PICTOGRAM TYPE. WIRE AND CONNECT NEW PICTOGRAM SIGNS AT LOCATIONS INDICATED. TYPICAL.
- 12 REPLACE EXISTING BATTERY BANKS EBB-1 AND EBB-2 WITH NEW. REFER TO SCHEDULES. PROVIDE WIREGUARD FOR BATTERY BANK.
- 13 ALL NEW WIRING SHALL BE CONCEALED WHERE POSSIBLE. SURFACE MOUNT CONDUIT SHALL BE MINIMIZED AND SHALL BE APPROVED BY CONTRACT ADMINISTRATOR PRIOR TO INSTALLATION.
- 14 WIRE AND CONNECT NEW CONDENSING UNIT ON ROOF.
- 15 PROVIDE 20A GFCI RECEPTACLE COMPLETE WITH IN USE COVER ON ROOF.
- 16 WIRE AND CONNECT INTEGRAL DOOR HOLD OPEN DEVICES TO FIRE ALARM FOR RELEASE UPON ALARM CONDITION.
- 17 WIRE AND CONNECT NEW EXHAUST FAN TO EXISTING CIRCUIT.
- 18 PROVIDE SURFACE CONDUIT FOR COUNTERTOP/APPLIANCE POWER.
- 19 REROUTE EXISTING CONDUITS TO ACCOMMODATE INSTALLATION OF NEW WINDOWS.
- 20 PROVIDE COUNTER-FRONT MOUNTED RECEPTACLE. REFER TO ARCHITECTURAL ELEVATIONS.
- 21 REPLACE EXISTING RECEPTACLE WITH GFCI RECEPTACLE.
- 22 PROVIDE 15A 120V RECEPTACLE FOR DRINKING FOUNTAIN. COORDINATE LOCATION WITH MECHANICAL SUB CONTRACTOR.
- 23 PROVIDE ELECTRICAL BASE BOARD HEATER EQUAL TO QUELLET ODA SERIES (WHITE). PROVIDE LOW VOLTAGE THERMOSTAT FOR LOCATIONS WHERE THERMOSTAT IS SHOWN. OTHERWISE PROVIDE BUILT IN THERMOSTAT.
- 24 PROVIDE ELECTRICAL FORCE FLOW HEATER EQUAL TO QUELLET OAWH SERIES (WHITE) COMPLETE WITH BUILT IN THERMOSTAT.
- 25 WIRE AND CONNECT ELECTRIC HAND DRYER SUPPLIED BY OTHERS.
- 26 PROVIDE CO DETECTION DEVICE EQUAL TO SYSTEM SENSOR CO 1224T. TYPICAL. PROVIDE WIRE GUARDS IN GYM.
- 27 PROVIDE 3/4" CONDUIT HOMERUN COMPLETE WITH PULL STRING TO OFFICE M21. TYP. REFER TO ARCHITECTURAL SEPARATE PRICE SPEC.
- 28 RELOCATED SECURITY SYSTEM KEYPAD.
- 29 WIRE AND CONNECT NEW DOOR CONTACTS TO EXISTING SECURITY SYSTEM.
- 30 WIRE AND CONNECT NEW EXHAUST FAN TO AREA LIGHTING CIRCUIT.



NEW MAIN FLOOR PLAN
SCALE: 1:100



NEW MEZZANINE FLOOR PLAN
SCALE: 1:100



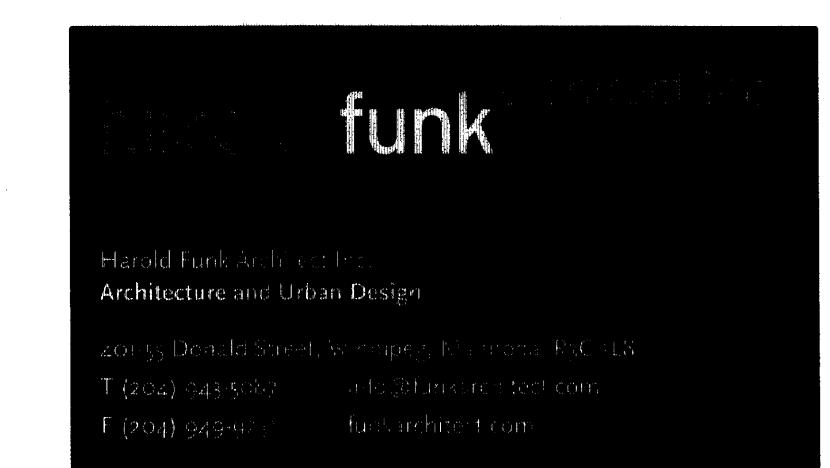
- rev4 - 2014-09-29 - Issued for Construction
- rev3 - 2014-08-01 - Issued for 95% Review
- rev2 - 2014-06-27 - Issued for 75% Review
- rev1 - 2014-04-30 - Issued for 30% Review

The drawings, specifications, revisions, addendums, and clarifications, must be read as a whole. Errors and omissions due to separation of the documents by the general contractor become the responsibility of the same.

This drawing must not be scaled.
The general Contractor must verify all dimensions, datums and levels prior to commencement of work. All errors and omissions must be reported immediately to the Architect.
Variations and modifications to work shown on this drawing shall not be carried out without written permission from the Architect.

TOWER PROJECT NO. :141033

TOWER ENGINEERING GROUP
 UNIT 1 - 1140 WAVERLEY ST. WINNIPEG, MB R3T 0P4
 TEL: (204) 925-1150 FAX: (204) 925-1155
 EMAIL: towereng@towereng.ca WEB: www.towereng.ca
 • WINNIPEG • CALGARY • CAMBRIDGE



project
WESTON MEMORIAL COMMUNITY CENTRE - INTERIOR RENOVATION
WINNIPEG, MANITOBA

sheet title
ELECTRICAL POWER AND SYSTEMS LAYOUT

project number: 14-004 drawing number:
scale: AS SHOWN
drawn by: JD
approved by: MM
date: October 2, 2014

E3.0