

DRAWING NOTES:

- 1 PROVIDE CLASS J CURRENT LIMITING FUSE FOR ALL FUSIBLE DISCONNECT SWITCHES.

MOTOR/EQUIPMENT SCHEDULE																	
ITEM	DESCRIPTION	LOCATION	KW/HP/AMPS	VOLTS/Ø	FEED FROM	PKG UNIT	STARTER				CONTROLS			FIRE ALARM SHUT DOWN	REMARKS	SEE NOTES BELOW	
							TYPE	FUNC	PL	PB	HOA	SUPPLY BY	TYPE				SUPPLY BY
AHU-1.NEW	AIR HANDLING UNIT	MECH ROOM	MOC-50A MCA-48A	208/1	CDP-A	Y							MECH	ELEC	ELEC		
CU-1.NEW	CONDENSING UNIT	EXTERIOR	MOC-30A MCA-17.2A	208/1	PANEL D	Y							MECH	ELEC	ELEC		INTERLOCK WITH AHU-1.NEW
EF-1.NEW	EXHAUST FAN	MENS M11	0.72A	120/1	EX. PANEL								ELEC	ELEC	ELEC		
EF-2.NEW	EXHAUST FAN	WOMENS M14	0.72A	120/1	EX. PANEL								ELEC	ELEC	ELEC		
EF-3.NEW	EXHAUST FAN	UNIVERSAL WASHROOM M30	0.34A	120/1	PANEL D								MS	ELEC	ELEC		
EF-4.NEW	EXHAUST FAN	WASHROOM M13	0.34A	120/1	PANEL D								MS	ELEC	ELEC		
EF-5.NEW	EXHAUST FAN	MECH/ELEC. M05	0.43	120/1	PANEL D								TC	ELEC	ELEC		

GENERAL NOTES:

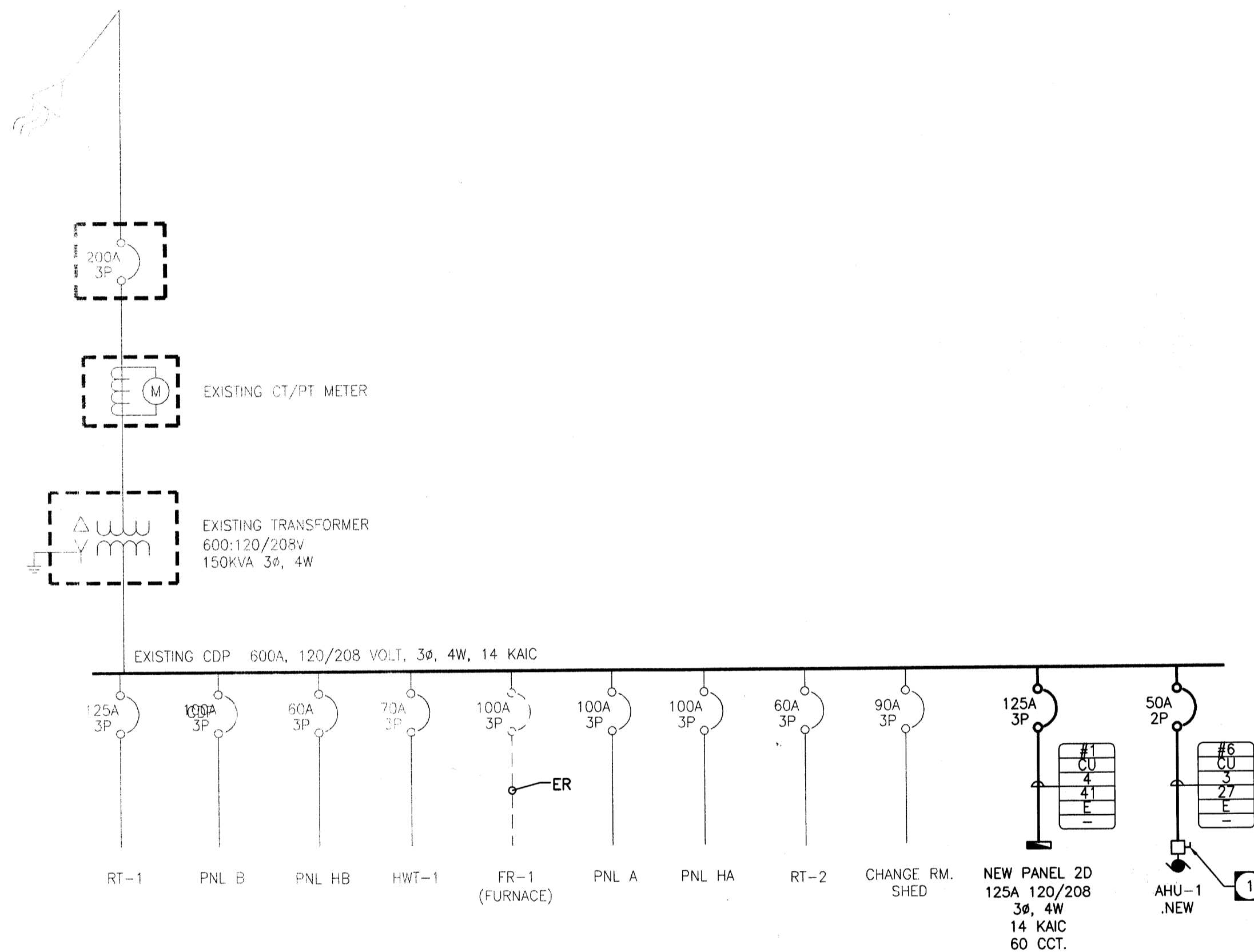
- MANUAL MOTOR STARTER TO BE C/W PILOT LIGHT AND OVERCURRENT PROTECTION.
- ALL STARTERS TO BE SUPPLIED & INSTALLED BY THE ELECTRICAL CONTRACTOR (EC) UNLESS OTHERWISE NOTED.
- DISCONNECT SWITCHES TO BE SUPPLIED & INSTALLED BY THE ELECTRICAL CONTRACTOR (EC)
- ELECTRICAL CONTRACTOR TO PROVIDE CIRCUIT BREAKERS AND WIRING ACCORDING TO THE FINAL NAMEPLATES OF THE MECHANICAL EQUIPMENT AT NO COST.
- REFER TO PANELBOARD SCHEDULES AND SINGLE LINE DIAGRAM FOR MOTOR AND EQUIPMENT OVERLOAD PROTECTION.

LEGEND:

FVNR = FULL VOLTAGE NON-REVERSING
RVNR = REVERSE VOLTAGE NON-REVERSING
MAN = MANUAL STARTER
MAG = MAGNETIC STARTER
HOA = HAND/OFF/AUTO
PL = PILOT LIGHT
Y = YES
F = FLOAT SWITCH
SS = SOFT STARTER
INT = INTEGRAL
T = THERMOSTAT
PS = PRESSURE SWITCH

AD = AMMONIA DETECTION SYSTEM
CO = CARBON MONOXIDE SENSOR
MT = MANUAL TIMER(WALL MOUNTED)
MS = MANUAL SWITCH
ESC = ELECTRONIC SPEED CONTROLLER
LS = LEVEL SWITCH
TDS = TIME DELAY SWITCH(WALL MTD)
FS = FLOW SWITCH
CO2 = CARBON DIOXIDE SENSOR
CHL = CHLORINE SENSOR
ES = END SWITCH
H = HUMIDISTAT

VFD = VARIABLE FREQUENCY DRIVE
PB = PUSH BUTTON
I = INTERLOCK
RP = REMOTE PANEL
TC = TIME CLOCK
DDC = DIGITAL DATA CONTROL SYSTEM



LUMINAIRE SCHEDULE								
TYPE	MANUFACTURER	CATALOGUE NO.	NO.	TYPE	VOLTS	MOUNTING	REMARKS	NOTES/WATTS
A	METALUX	2M-254T5A-120-EBT1-U	2	54W T5HO	120	S/C	2'X4' FIXTURE SURFACE MOUNT	117
B	HALO	SLD405830WH	N/A	LED	120	C	4" LED POT LIGHT	12.5
C	LUMINAIRE LED	SPC 4 12"-NB-7WHP-3500K-120-OP-WHT	1	7W HP	120	S/W	WALL MOUNT FIXTURE. MOUNT HORIZONTALLY	31
D	HALO	SLD606830WH	N/A	LED	120	C	4" LED POT LIGHT	12.5
XA	INVUE	VFS-70-MP-TT-WF-BZ-L	1	70W MH	120	S/W	SIGNAGE FLOOD LIGHT	90W
XB	LUMINAIRE LED	AEL-12"-10WHP-120-DP-BKH	1	10W HP	120	S/W	OVER DOORWAY MOUNT	15W

NOTES:

- ALL FLUORESCENT LAMPS ARE TO BE 3500°K AND A MINIMUM R2 CRI UNLESS NOTED OTHERWISE.
- FINISH AS SELECTED BY INTERIOR DESIGNER.

LEGEND:

S = SURFACE W = WALL TB = T-BAR
R = RECESSED V = VALANCE DW = DRYWALL
C = CEILING P = PENDANT CH = CHAIN

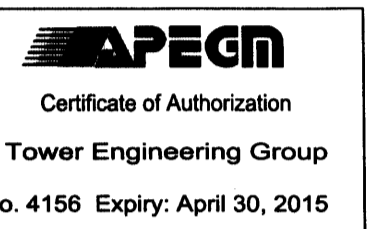
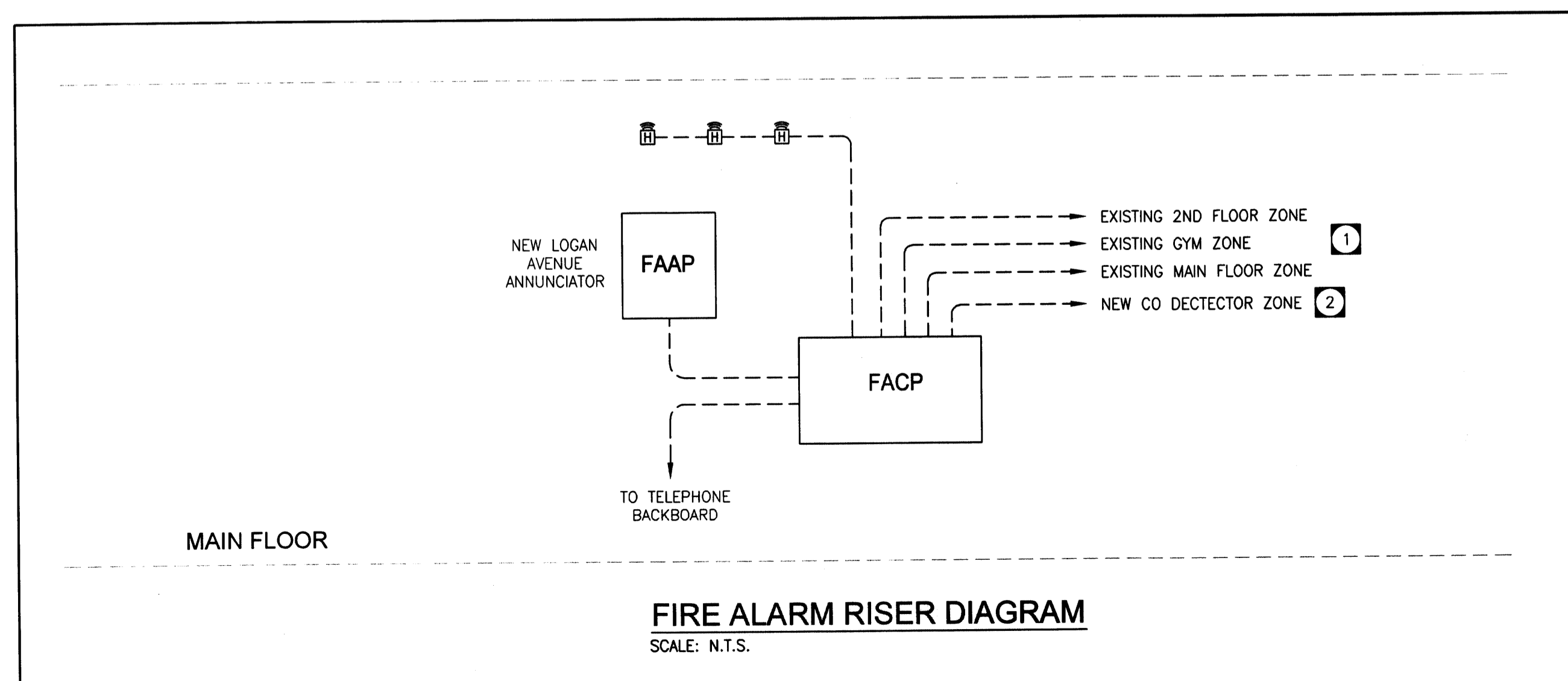
BATTERY BANK SCHEDULE							
NO.	MANUFACTURER	CATALOGUE NO.	INPUT VOLTS	OUTPUT VOLTS	SOURCE PANEL	QUANTITIES	MINIMUM WATTAGE x 1.25
EBB#1	LUMACELL	RG245-144-2-LD13-AT-TMBB	120	24		2	20
EBB#2	LUMACELL	RG245-144-2-LD13-AT-TMBB	120	24		2	20
EBB#3	LUMACELL	RG245-350-2-LD13-AT-TMBB	120	24		12	120
EBB#4	LUMACELL	LS SERIES - SELF POWERED	120		SEE DWG		

NOTES:

LUMACELL MQM-2-LD13

PANEL '2D' (NEW)		VOLTAGE : SEE SINGLE LINE BUS : SEE SINGLE LINE		PHASE : SEE SINGLE LINE WIRE : SEE SINGLE LINE	
DESCRIPTION	LOAD WATTS	BKR SIZE	CIRCUIT	BKR SIZE	LOAD WATTS
EXIT SIGNS		15	1	2	15
EXHAUST FAN (EF-5)	100	15	3	4	15
EXTERIOR LGT	285	15	5	6	15
DISWASHER MPR#2	1000	15	7	8	15
MICROWAVES MPR#2	1000	15	9	10	15
FRIDGE MPR#2	1000	15	11	12	20
DOOR OPERATOR UNIV. WASHRM	600	15	13	14	15
HANDDRYER UNI WASHRM	600	15	15	16	15
RECEP. MPR#2	400	15	17	18	15
RECEP. MPR#3	1000	15	19	20	20
BASEBOARD MPR#3	3000	20	21	22	15
BASEBOARD COMP. & OFFI.	2500	2P	23	24	15
RECEP. COMPUTER M26	600	20	25	26	30
RECEP. COMPUTER M26	600	2P	27	28	2P
RECEP. OFFICE M21	800	15	29	30	20
RECEP.MP M24/HALL M34	800	15	31	32	30
BASEBOARD M30/M29	1500	15	33	34	2P
CORRIDOR M02/CIRCULATIONM20	600	15	35	36	15
SPARE		15	37	38	15
SPARE		15	39	40	15
SPARE		15	41	42	15
SPARE		15	43	44	15
SPARE		15	45	46	15
SPARE		15	47	48	15
SPARE		15	49	50	15
SPARE		15	51	52	15
SPARE		15	53	54	15
SPARE		15	55	56	15
SPARE		15	57	58	15
SPARE		15	59	60	15
HTG. :	11.5KW	LTG. :	0.3KW	MTR. :	3.8KW
MISC. :	21.8KW	TOTAL :	37.4KW		

FIRE ALARM ZONE	
ZONE NO.	DESCRIPTION
1	MAIN FLOOR
2	GYM
3	SECOND FLOOR
4	CO DETECTION



- rev4 - 2014-09-29 - Issued for Construction
- rev3 - 2014-08-01 - Issued for 95% Review
- rev2 - 2014-06-27 - Issued for 75% Review
- rev1 - 2014-04-30 - Issued for 30% Review revision

The drawings, specifications, revisions, addendums, and clarifications, must be read as a whole. Errors and omissions due to separation of the documents by the general contractor become the responsibility of the same.

This drawing must not be scaled.

The general Contractor must verify all dimensions, datums and levels prior to commencement of work. All errors and omissions must be reported immediately to the Architect.

Variations and modifications to work shown on this drawing shall not be carried out without written permission from the Architect.

TOWER ENGINEERING GROUP
 UNIT 1 - 1140 WAVERLEY ST. WINNIPEG, MB R3T 0P4
 TEL: (204) 925-1150 FAX: (204) 925-1155
 EMAIL: towereng@towereng.ca WEB: www.towereng.ca
 • WINNIPEG • CALGARY • CAMBRIDGE

funk
 Harold Funk & Associates
 Architecture and Urban Design
 400-1, Donnelly Street, Winnipeg, Manitoba, R4G 1S5
 T: (204) 949-9000 F: (204) 949-9001
 E: (204) 949-9002 W: www.funkarchitect.com

project
WESTON MEMORIAL COMMUNITY CENTRE - INTERIOR RENOVATION
 WINNIPEG, MANITOBA

sheet title
ELECTRICAL SCHEDULES, RISER AND SINGLE LINE DIAGRAM LAYOUT

project number: 14-004 drawing number:
 scale: AS SHOWN **E4.0**
 drawn by: JD
 approved by: MM
 date: September 30, 2014