

EXISTING CURB

TIE TO EXISTING CURB

PROPOSED CURB & GUTTER SECTION (SD-200)

LIMIT OF ASPHALT REMOVAL

REMOVE CURB & GUTTER TO LIMITS SHOWN

LIMITS AS REQUIRED FOR ASPHALT REMOVAL 300mm MIN BEYOND 600mm WIDE (SD-200) CURB & GUTTER SECTION

CONFIRM GUTTER GRADES IN FIELD

CONCRETE PAD (TYP. OF 3) SEE STRUCTURAL DRAWING S0002

BOLLARDS AT 1.5 SPACING SEE DETAIL THIS SHEET

REMOVE CURB

INSTALL NEW BOLLARDS NO CLOSER THAN 1.0m TO EXISTING CATCHBASIN

CAUTION - EXISTING CATCHBASIN (SD-225)

EXISTING CB LEAD

EXCAVATE SOD & TOPSOIL & DISPOSE OF IN ACCORDANCE WITH THE CITY OF WINNIPEG SPECIFICATION CW1130-3.4 DISPOSAL OF MATERIALS. COMPACT SUBGRADE TO 95% STD PROCTOR MAX DRY DENSITY (~1300 kg/m³). PLACE SEPARATION GEOTEXTILE (CW 3130 TABLE CW 3130.1) IN ACCORDANCE WITH MANUFACTURER'S INSTALLATION SPECIFICATIONS. CONSTRUCT GRANULAR PAVEMENT/TANK FOUNDATION.

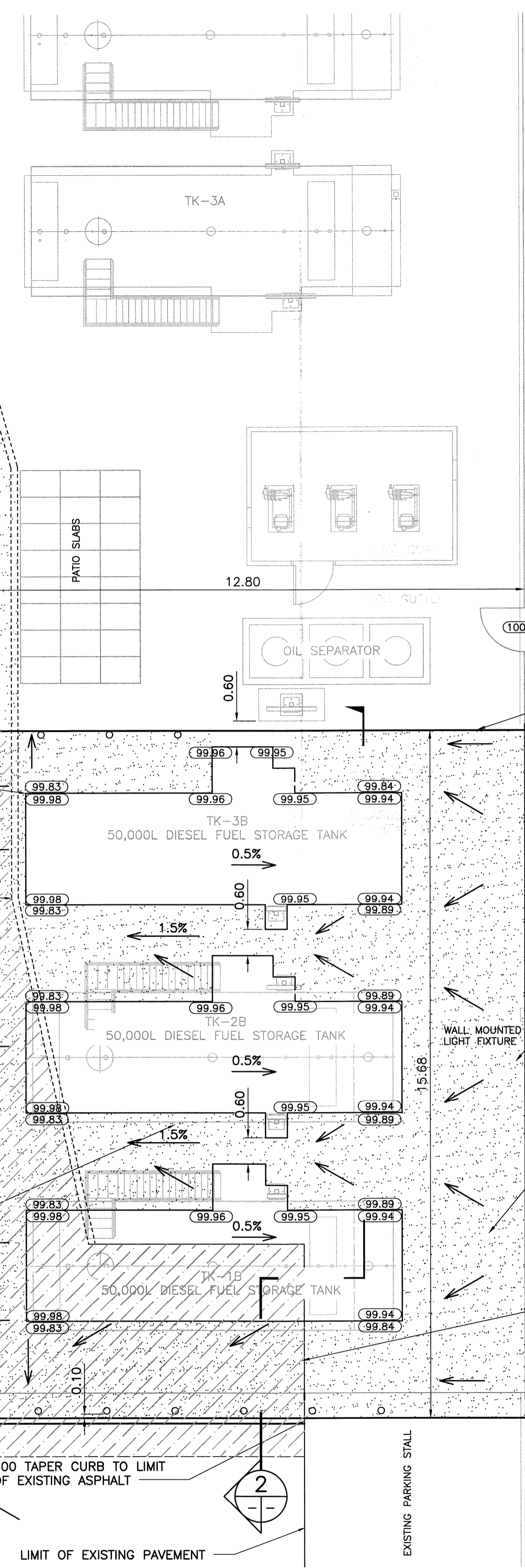
SAW CUT EXISTING ASPHALT PAVEMENT FULL-DEPTH ALONG LIMITS DESIGNATED FOR REMOVAL. DISPOSE OF MATERIAL IN ACCORDANCE WITH THE CITY OF WINNIPEG SPECIFICATION CW1130-3.4 DISPOSAL OF MATERIALS. REPLACE ASPHALT PAVEMENT MATERIAL EXISTING THICKNESS TO MEET NEW CONCRETE CURB & GUTTER

PROPOSED CONCRETE CURB & GUTTER (SD-200)

900 TAPER CURB TO LIMIT OF EXISTING ASPHALT

LIMIT OF EXISTING PAVEMENT

1 SITE GRADING
1 : 75



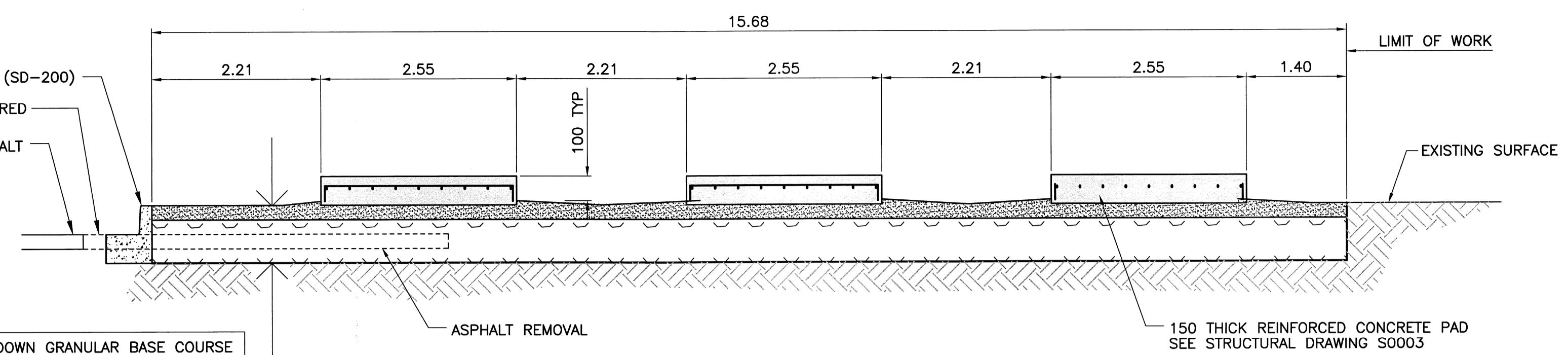
CONCRETE CURB & GUTTER (SD-200)
REPLACE ASPHALT AS REQUIRED
EXISTING ASPHALT

75 - 20 DOWN GRANULAR BASE COURSE
225 - 50 DOWN GRANULAR SUBBASE
SEPARATION GEOTEXTILE
COMPACTED SUBGRADE

ASPHALT REMOVAL

150 THICK REINFORCED CONCRETE PAD
SEE STRUCTURAL DRAWING S0003

2 TANK FOUNDATION PAD SECTION
HOR 1:50, VER 1: 20



LEGEND:

- NEW CURB
- EXISTING CURB
- CURB REMOVAL
- ASPHALT REMOVAL
- NEW GRAVEL
- PROPOSED ELEVATION

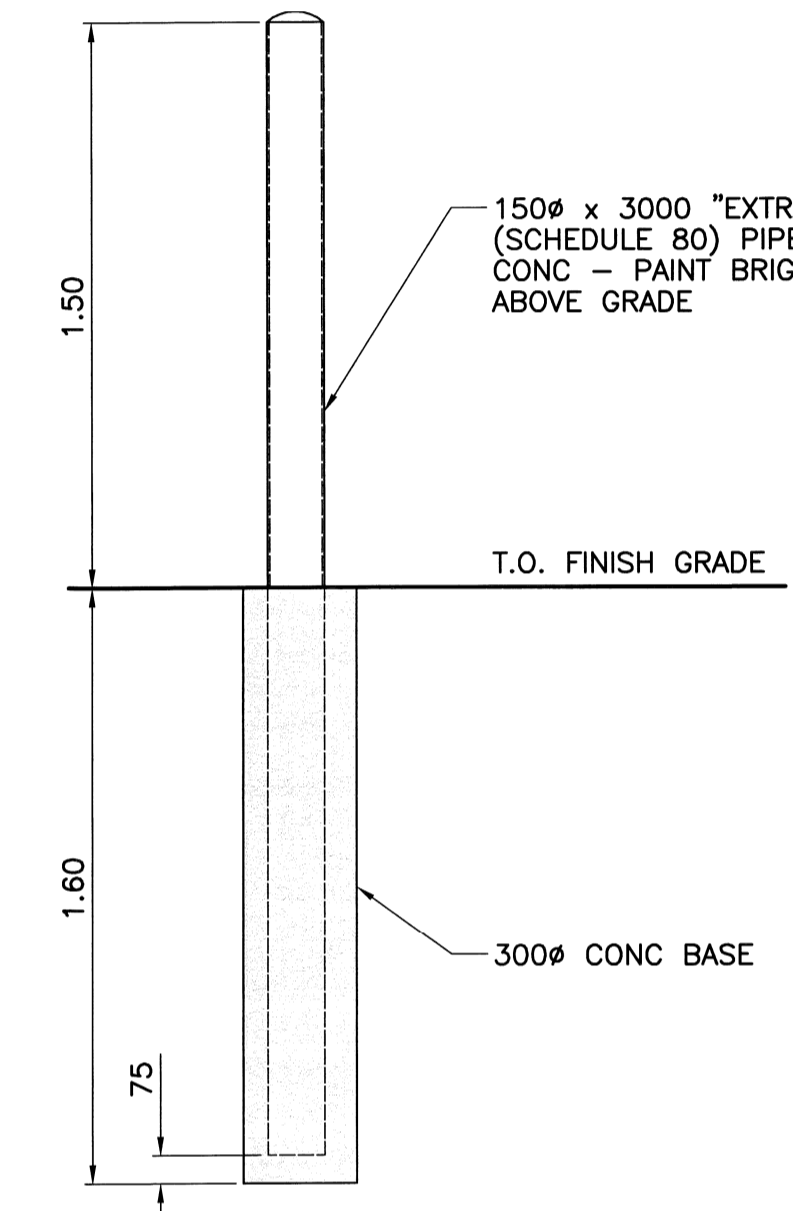
MATCH EXISTING GRADE

CONTRACTOR TO IDENTIFY & LOCATE UNDERGROUND UTILITIES & SERVICES PRIOR TO WORK

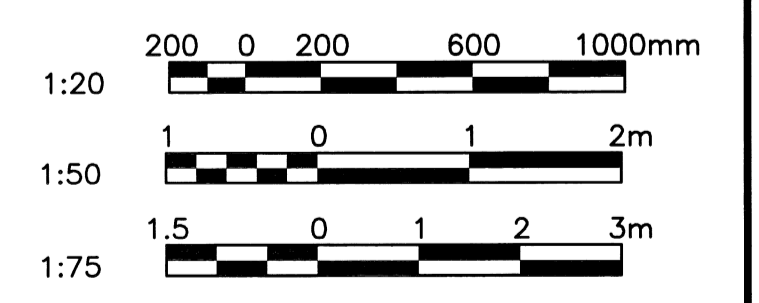
CAUTION-CONDUITS

PROVIDE POSITIVE DRAINAGE AWAY FROM BUILDING & BETWEEN TANK FOUNDATION PADS

LIMIT OF EXISTING PAVEMENT



3 BOLLARD
1 : 20



| NO. | DESCRIPTION | NO. | DATE | DESCRIPTION | PREPARED | DESIGN | REVIEW | DATE | APPROVED |
|-----|-------------------------|-----|----------|-------------------------|----------|--------|--------|------|----------|
| 00 | ISSUED FOR CONSTRUCTION | 00 | 14.09.05 | ISSUED FOR CONSTRUCTION | GMD | TP | RL | | |

| NO. | DATE | DESCRIPTION | PREPARED | DESIGN | REVIEW | DATE | APPROVED |
|-----|----------|-------------------------|----------|--------|--------|------|----------|
| 00 | 14.09.05 | ISSUED FOR CONSTRUCTION | GMD | TP | RL | | |

PERMIT STAMP

SEAL

| DESIGNED BY: | PREPARED BY: | REVIEWED BY: | CLIENT: |
|----------------|--------------|--------------|-------------------------------------|
| T.P. | G.M.D. | K.J.M. | CITY OF WINNIPEG TRANSIT DEPARTMENT |
| AUTHORIZED BY: | DATE: | SCALE: | |
| | 14.09.05 | AS NOTED | |

Winnipeg CITY OF WINNIPEG TRANSIT DEPARTMENT

| PROJECT NAME: | DRAWING NO.: | REV: |
|--|----------------------|------|
| CITY OF WINNIPEG - FORT ROUGE GARAGE DIESEL FUEL STORAGE CAPACITY INCREASE | 1429720100-DWG-C0001 | 00 |

A1 (841 x 504)