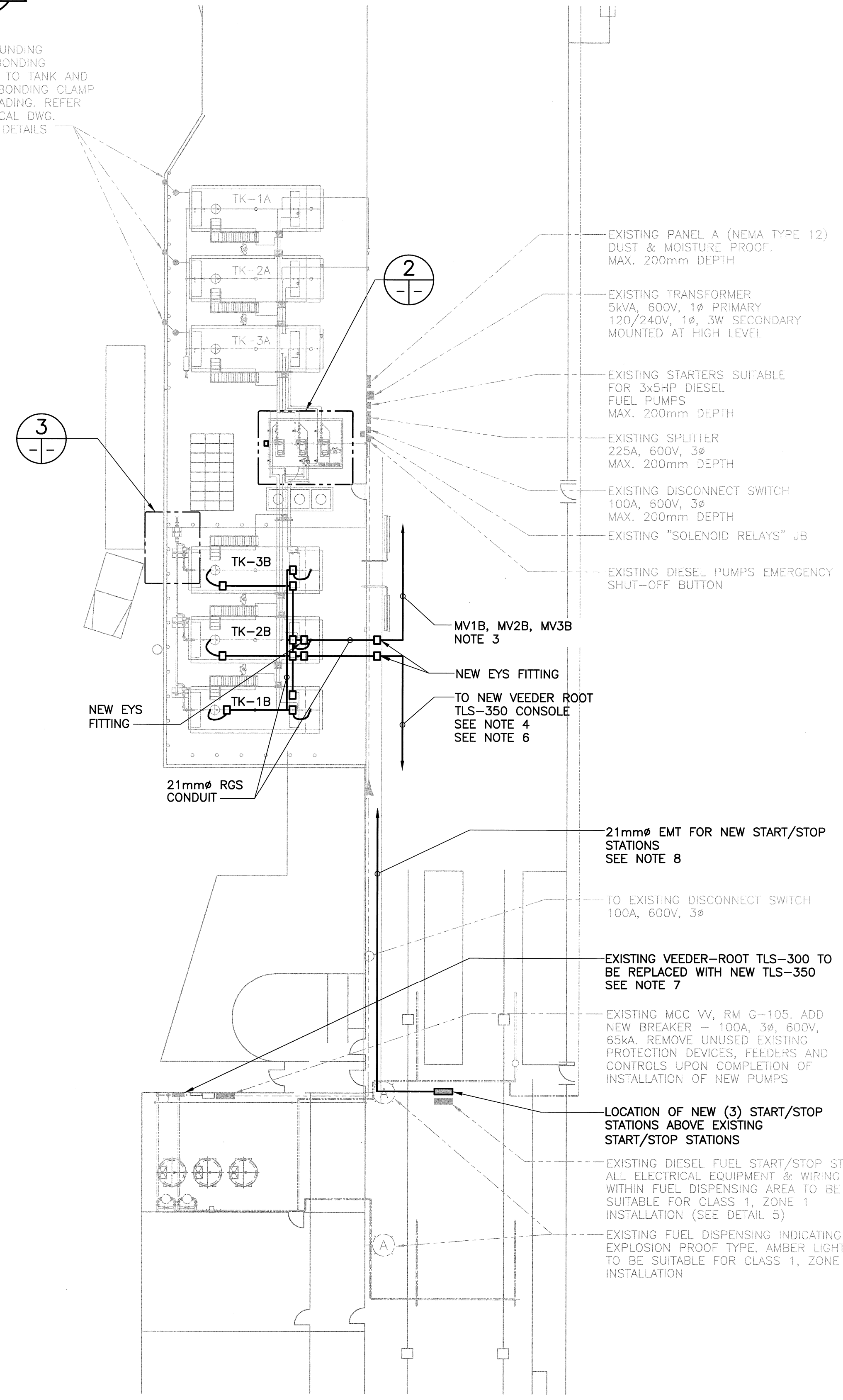
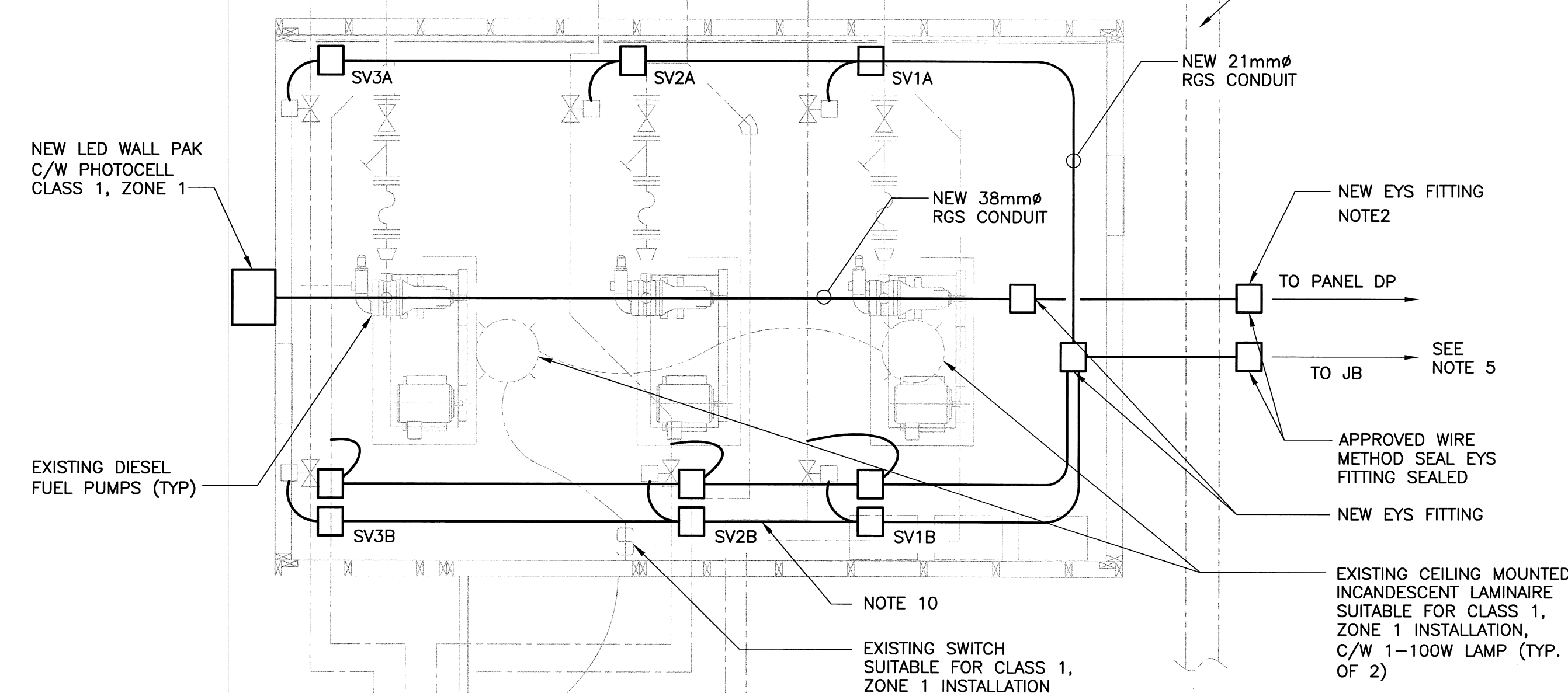


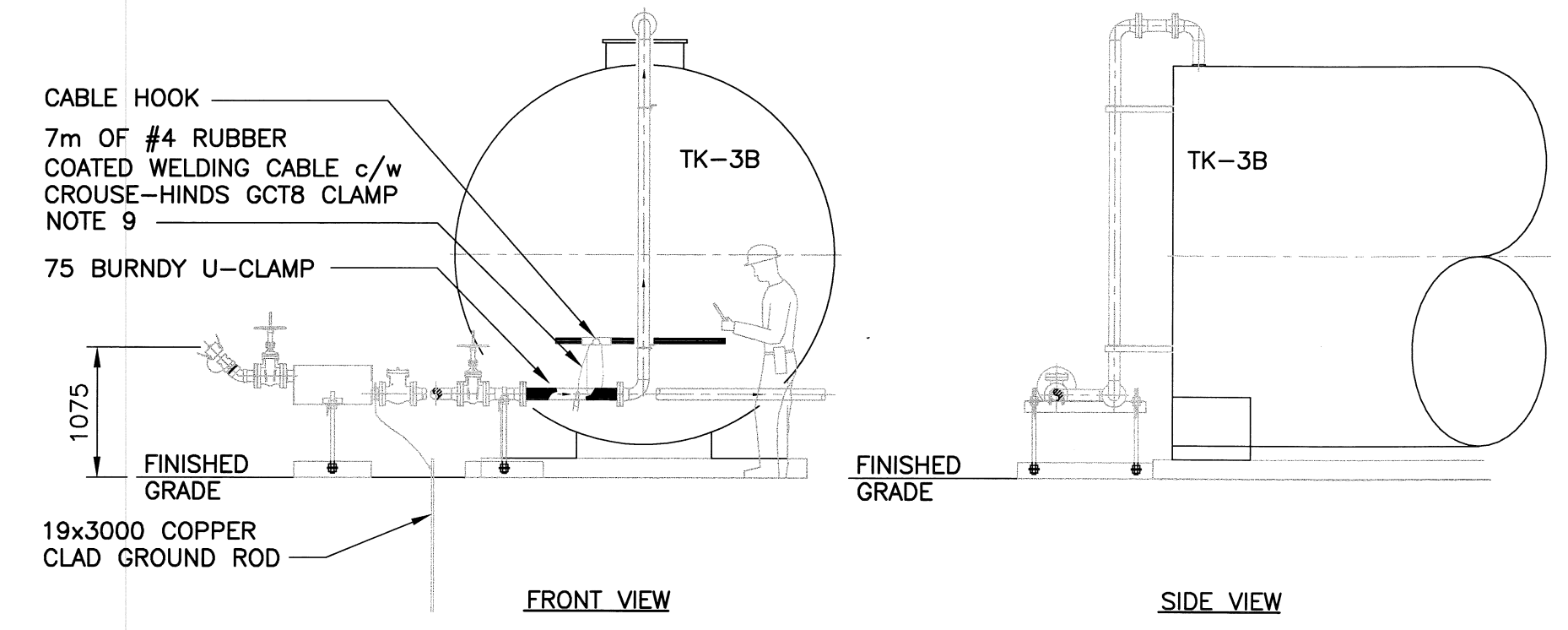
EXISTING GROUNDING ELECTRODE, BONDING CONNECTIONS TO TANK AND PIPING, AND BONDING CLAMP FOR FUEL LOADING. REFER TO MECHANICAL DWG. M0005 FOR DETAILS



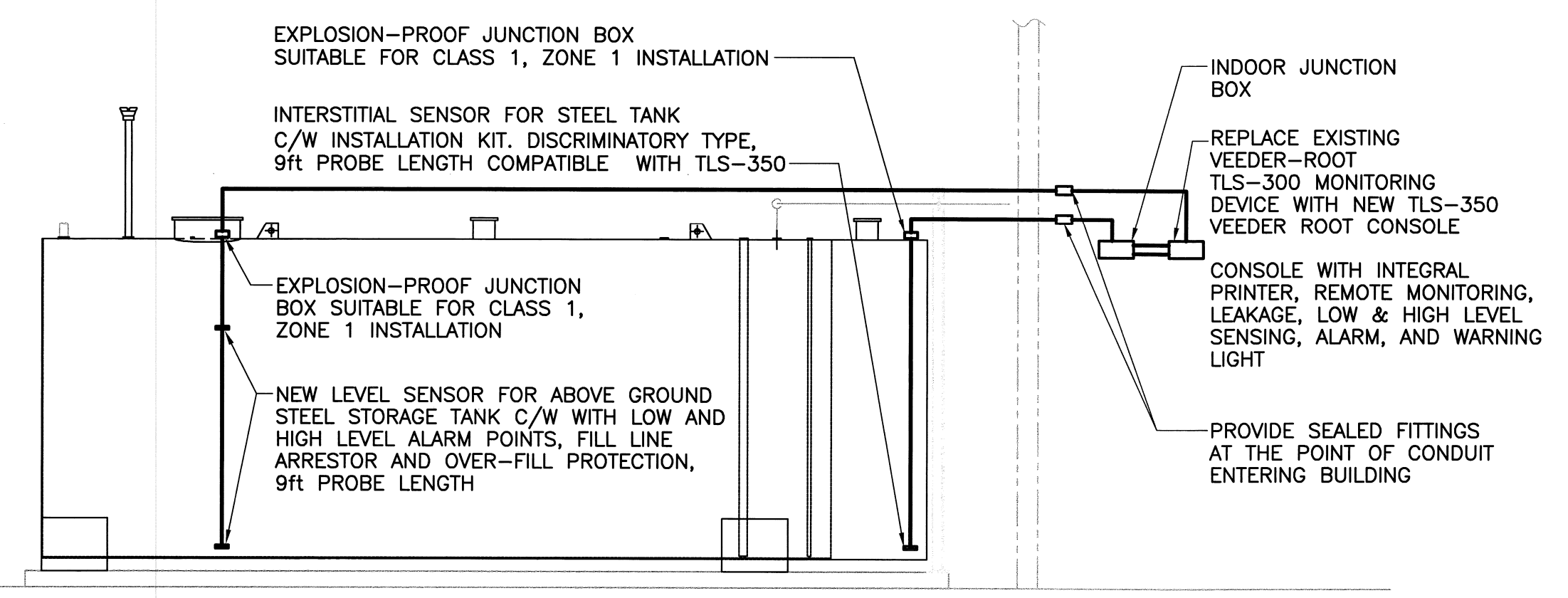
1 ELECTRICAL LAYOUT
1:200



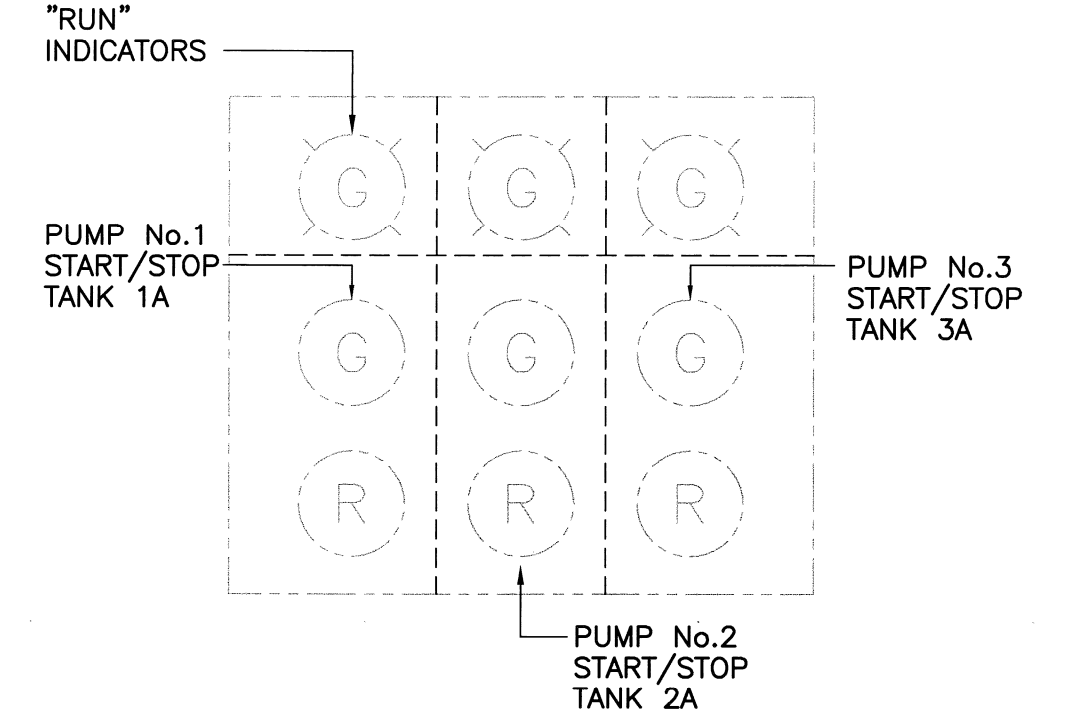
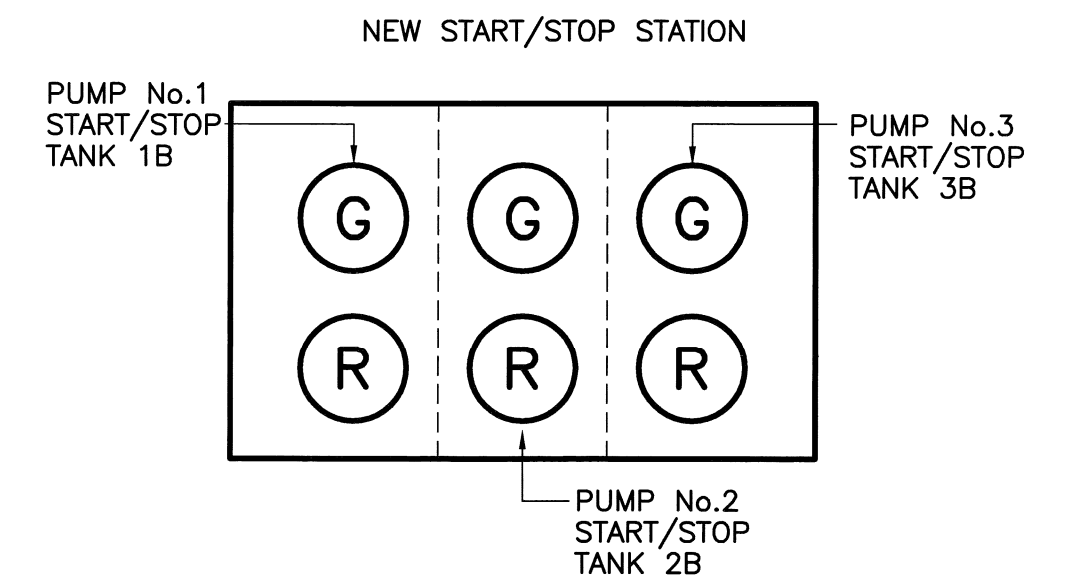
2 PUMPHOUSE DETAIL
1:25



3 TANK FILL PIPING GROUNDING/STATIC DETAIL
1:50



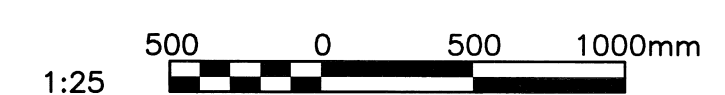
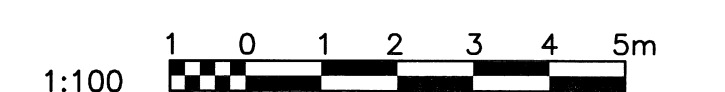
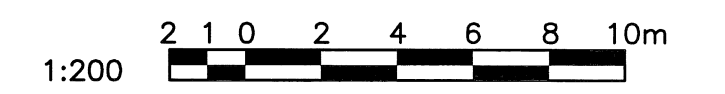
4 DIESEL FUEL TANK LEVEL SENSOR/PROBE SCHEMATIC DETAIL
N.T.S.



5 DIESEL FUEL START/STOP STATION DETAIL
N.T.S.

NOTES:

- CLASS 1 ZONE 1 WIRE METHODS IN PUMP HOUSE AND TANK FARM. PER SECTION OF LATEST EDITION OF CEC PART 1.
- INSTALL ALL EYS FITTINGS AS CLOSE AS PRACTICAL TO ENTRY AND EXITS.
- CONFIRM TERMINATION POINTS FOR MV1B, MV2B AND MV3B ON SITE PER SCHEMATICS.
- FOLLOW SAME ROUTING AS EXISTING VEEDER ROOT PROBE CONDUIT. SEE DETAIL 4 FOR TANK SENSOR REQUIREMENTS.
- POWER FOR SOLENOID VALVES ON SAME CIRCUIT AS MOTORIZED VALVES.
- INSTALL TANK SENSORS AND PROBES PER MANUFACTURER INSTRUCTIONS, COORDINATE WITH MECHANICAL. 1 INTERSTITIAL MONITOR SENSOR AND 1 LEVEL SENSOR PER TANK.
- CONTRACTOR TO REMOVE EXISTING TLS-300 CONSOLE AND RETURN TO OWNER IN GOOD CONDITION.
- FOLLOW SAME ROUTING AS EXISTING CONTROL STATION PIPING AND INSTALL PER LATEST EDITION OF CEC PART 1.
- SUPPLY, INSTALL AND CONNECT NEW STATIC SYSTEM AT NEW TANK FILL STATION.
- CONTROL WIRING IN 21mm RGS. CLASS 1 ZONE 1 RATED FOR PRESSURE SWITCHES.



NO.	DESCRIPTION	NO.	DATE	DESCRIPTION	PREPARED	REVIEW	DESIGN	AUTHORIZE
1429720100-DWG-E0003	ELECTRICAL BLOCK DIAGRAM							
1429720100-DWG-E0002	ELECTRICAL FUEL PUMP CONTROL SCHEMATIC							
0729720100-DWG-E0001	ELECTRICAL EQUIPMENT LAYOUT & SCHEMATIC DETAILS	00	14.09.05	ISSUED FOR CONSTRUCTION	H.A.	N.C.	N.C.	

NO.	DESCRIPTION	NO.	DATE	DESCRIPTION	PREPARED	REVIEW	DESIGN	AUTHORIZE

APEGM
Certificate of Authorization
TETRA TECH WEI Inc.
No. 5313 Date: April 30, 2015

PROVINCE OF MANITOBA
CRAWFORD
Member
25485
REGISTERED PROFESSIONAL ENGINEER

DESIGNED BY:	PREPARED BY:	REVIEWED BY:	CLIENT:
N.C.	H.A.	N.C.	CITY OF WINNIPEG
AUTHORIZED BY:	DATE:	SCALE:	
	14.07.31	AS NOTED	

Winnipeg CITY OF WINNIPEG
TRANSIT DEPARTMENT
TETRA TECH
Complex World
Clear Solutions

PROJECT NAME:	DRAWING DESCRIPTION:	DRAWING NO.:	REV
CITY OF WINNIPEG - FORT ROUGE GARAGE DIESEL FUEL STORAGE CAPACITY INCREASE	ELECTRICAL LAYOUT AND DETAILS	1429720100-DWG-E0001	00