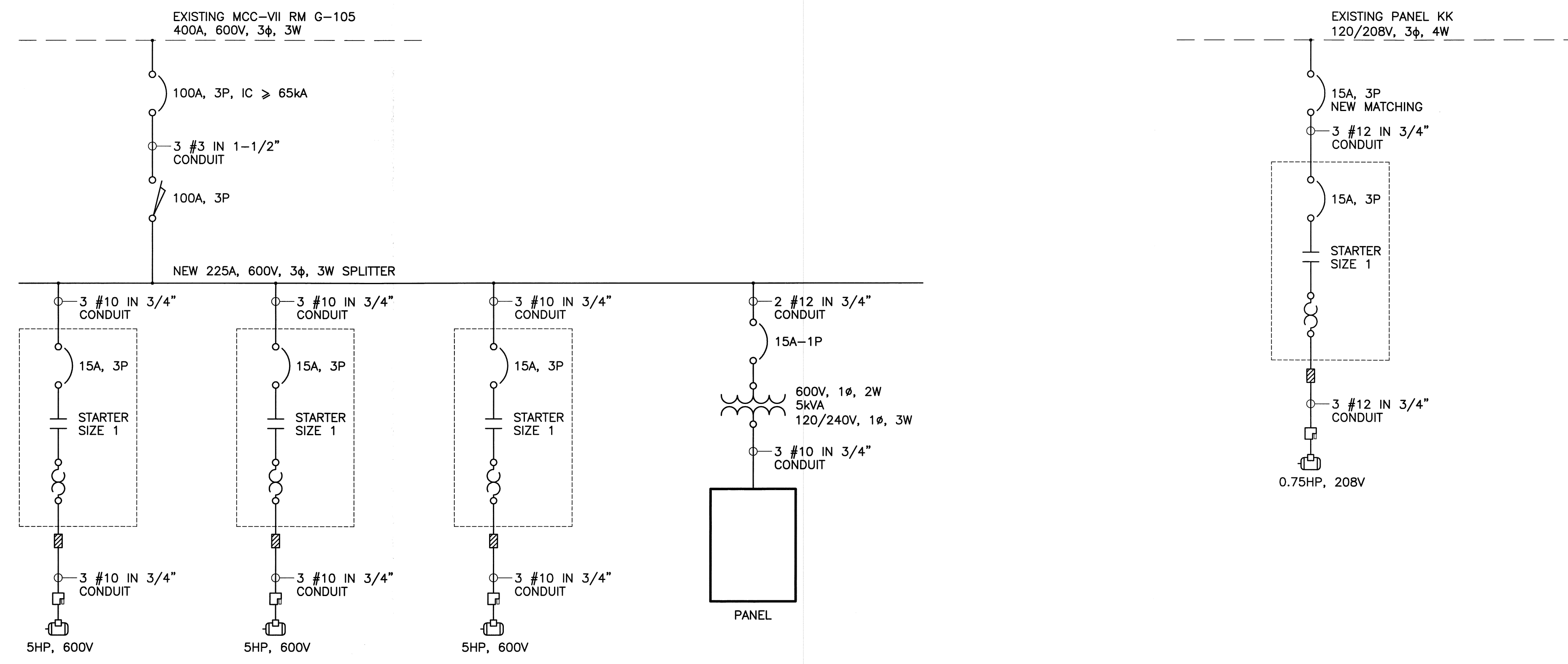


- NOTES:**
1. PANEL DP LOCATED NEAR 600 VOLT DISTRIBUTION/PUMP STARTERS.
 2. CONFIRM PANEL SCHEDULE AND UPDATE WITH TYPED PANEL SCHEDULE.
 3. INSTALL NEW 15A BREAKER FOR NEW OUTDOOR PUMP HOUSE LIGHTING CIRCUIT.



1
- -
POWER FOR DIESEL PUMPS
@ 421 OSBORNE ST.
N.T.S.

2
- -
POWER FOR GASOLINE FUEL PUMP
(TEMPORARY AND PERMANENT LOCATIONS)
@ 421 OSBORNE ST.
N.T.S.

NOTE 1 NOTE 2

PANEL		100A MAIN BUS				PANEL DP				MOUNTING: SURFACE			
		120/240V, 1φ, 3W				LOCATION: 421 OSBORNE ST							
DESCRIPTION		CCT.	BRK AMP	A B	BRK AMP	CCT.	DESCRIPTION		CCT.	BRK AMP	A B	BRK AMP	CCT.
CARD ACCESS/CAMERA		1	15	•	15	2	TANK SOLENOID VALVES						
PARKING LOT POST CAMERA HEATER		3	15	•	15	4	PUMPHOUSE LIGHTS						
PUMP HOUSE EXTERIOR LIGHT		5		•		6	SPACE						
SPACE		7		•		8	SPACE						
SPACE		9		•		10	SPACE						
SPACE		11		•		12	SPACE						

NOTE 3

NO.	DESCRIPTION	NO.	DATE	DESCRIPTION	PREPARED	REVIEW	DESIGN	APPROVED
00	ISSUED FOR CONSTRUCTION		14.09.05		H.A.	N.C.	N.C.	

REVISIONS/ISSUE	DRAFTING	ENGINEERING
-----------------	----------	-------------

PERMIT STAMP

APEGM
Certificate of Authorization
TETRA TECH WEI Inc.
No. 5313 Date: April 30, 2015

SEAL

PROVINCS OF MANITOBA
N.E.
CRAWFORD
Member
25485
REGISTERED PROFESSIONAL ENGINEER

DESIGNED BY: N.C. H.A. N.C.
PREPARED BY: DATE: 14.07.31 SCALE: AS NOTED

THE CONTENT OF THIS DOCUMENT IS NOT INTENDED FOR THE USE OF, NOR IS IT INTENDED TO BE RELIED UPON BY ANY PERSON, FIRM OR CORPORATION OTHER THAN THE CLIENT AND TETRA TECH WEI Inc. (Tetra Tech). TETRA TECH WEI Inc. (Tetra Tech) DENIES ANY LIABILITY WHATSOEVER TO OTHER PARTIES FOR DAMAGES OR INJURY SUFFERED BY SUCH THIRD PARTY ARISING FROM THE USE OF THIS DOCUMENT BY THEM, WITHOUT THE EXPRESSED WRITTEN AUTHORITY OF TETRA TECH WEI Inc. (Tetra Tech) AND OUR CLIENT. THIS DOCUMENT IS SUBJECT TO FURTHER RESTRICTIONS IMPOSED BY THE CONTRACT BETWEEN THE CLIENT AND TETRA TECH WEI Inc. (Tetra Tech) AND THESE PARTIES PERMISSION MUST BE SOUGHT REGARDING THIS DOCUMENT IN ALL OTHER CIRCUMSTANCES.

CITY OF WINNIPEG
TRANSIT DEPARTMENT

TETRA TECH
Complex World
Clear Solutions

PROJECT NAME: CITY OF WINNIPEG - FORT ROUGE GARAGE DIESEL FUEL STORAGE CAPACITY INCREASE

DRAWING DESCRIPTION: ELECTRICAL DIAGRAMS AND PANEL SCHEDULE

DRAWING NO: 1429720100-DWG-E0004

REV: 00