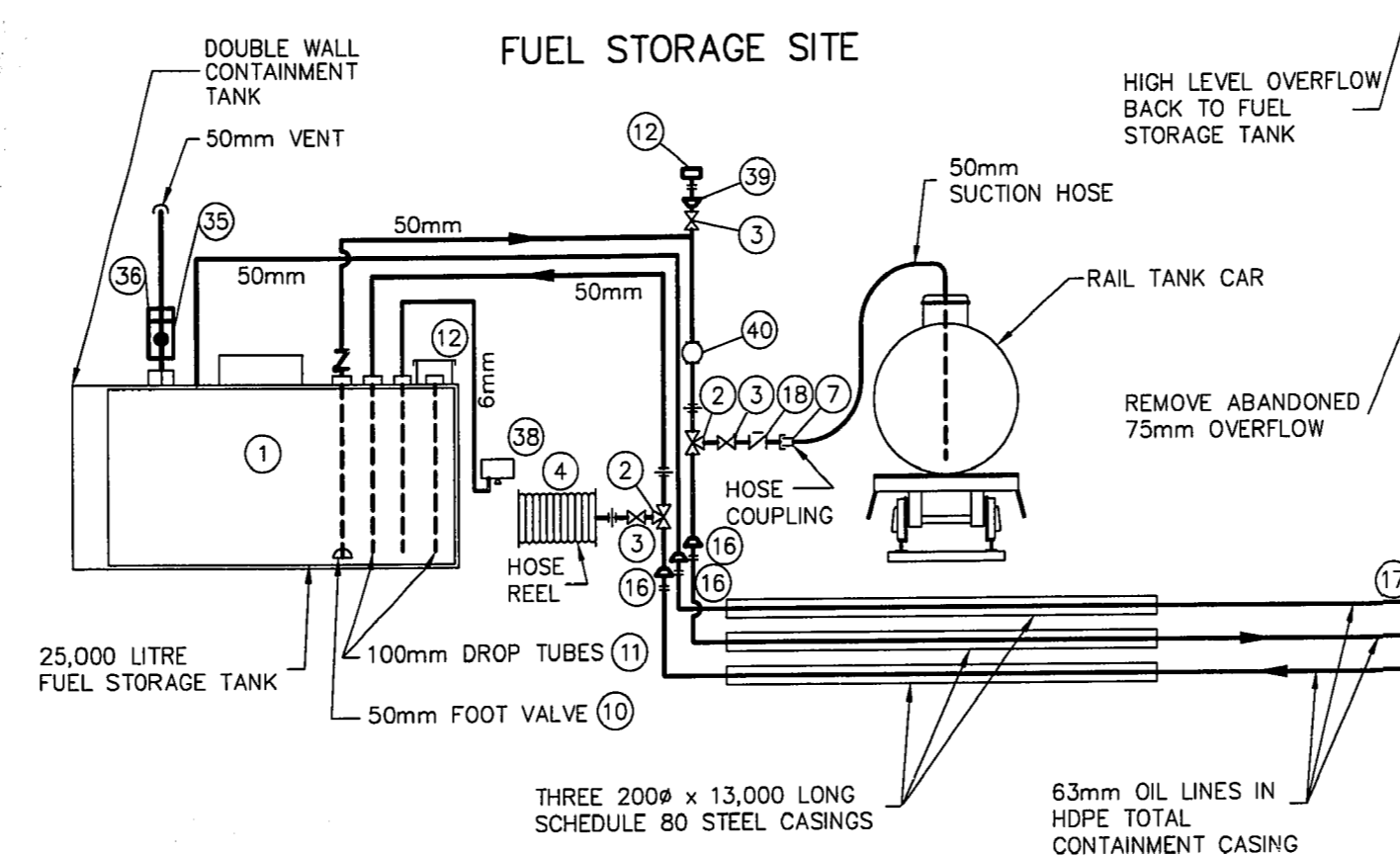


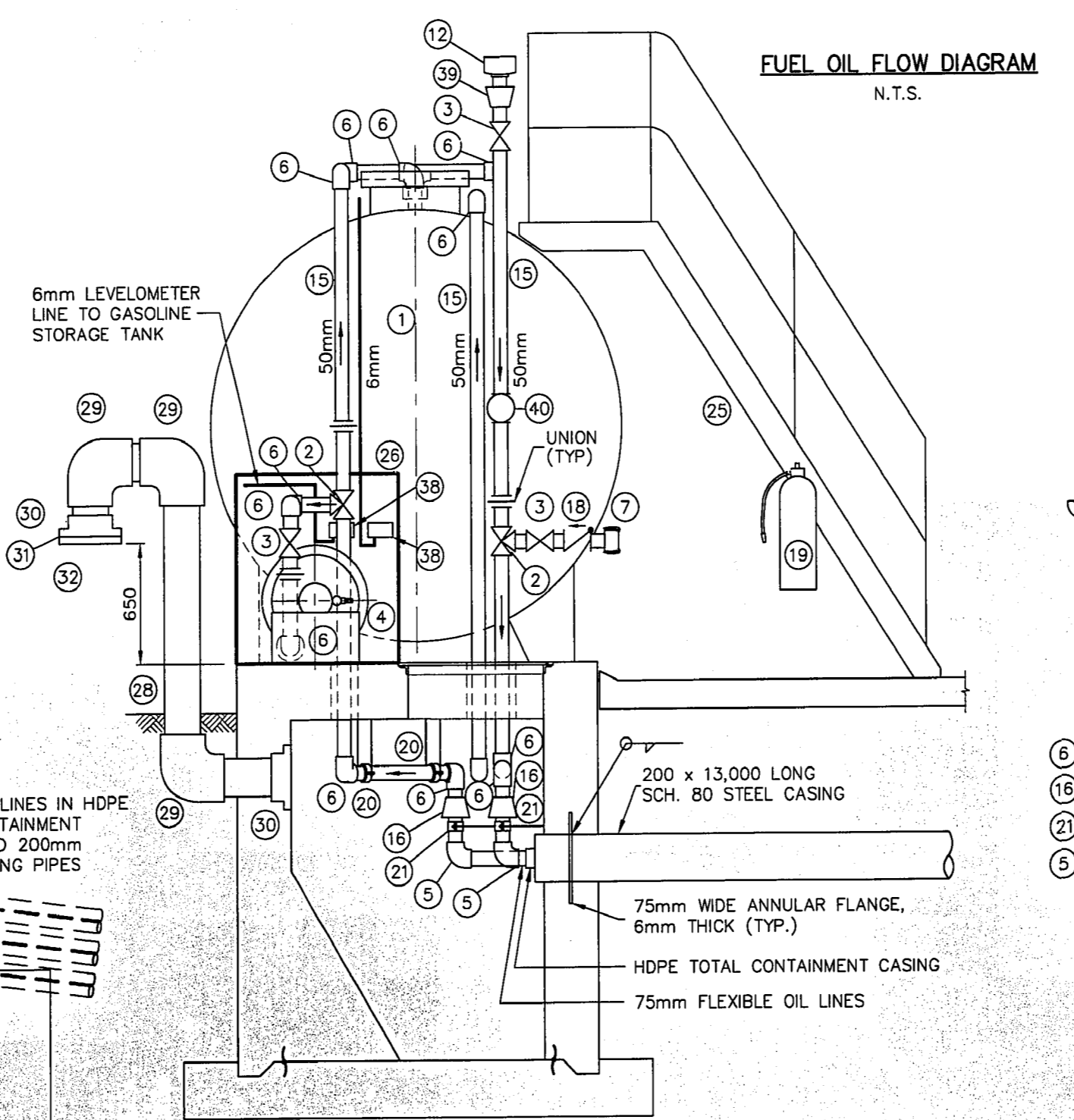
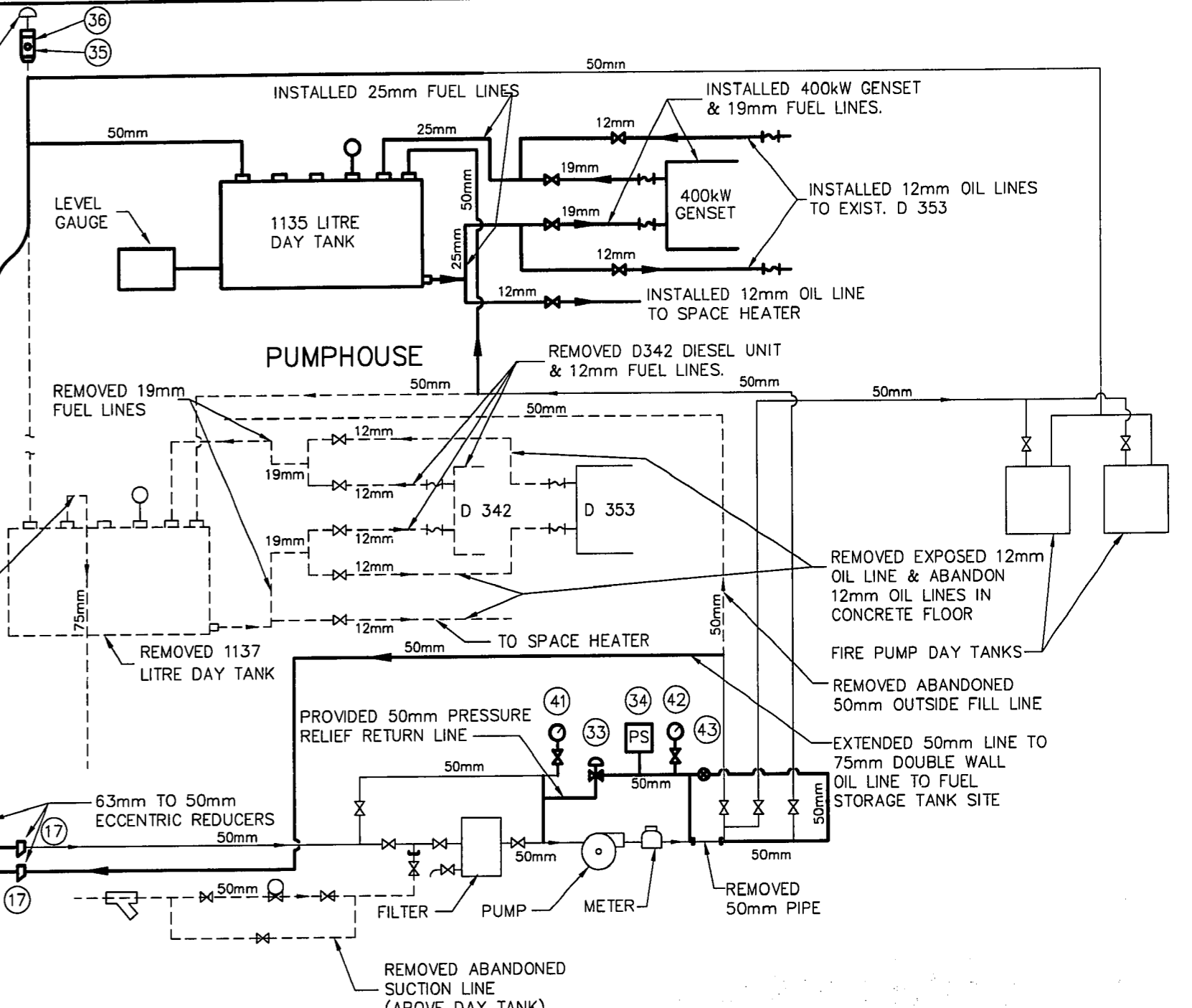
SECTION OF MOTOR ROOM  
SCALE: 1:50

EQUIPMENT		
NO	QUANTITY	DESCRIPTION
1	1	*** 25,000 L. OIL STORAGE TANK ***
2	2	50mm 3 WAY BALL VALVE
3	2	50mm GATE VALVE
4	1	*** HOSE REEL ***
5	3	63mm-90° ELBOW
6	18	50mm-90° ELBOW
7	2	50mm QUICK COUPLING & END CAP
8	1	50mm VENT
9		
10	1	50mm FOOT VALVE
11	2	100mm DROP TUBE
12	1	100mm LOCKING FILL CAP
13		
14	1	*** 2,500 L. GASOLINE STORAGE TANK ***
15		50mm STEEL PIPE, SCH. 40, BLACK
16	3	63mm-50mm REDUCER
17	3	75mm-50mm ECCENTRIC REDUCER
18	1	50mm CHECK VALVE
19	2	FIRE EXTINGUISHER
20	7	50mm PIPE RISER CLAMPS
21	3	63mm PIPE RISER CLAMPS
22	1	50mm HDPE PIPE, SERIES 100
23	1	50mm HDPE SOCKET FUSION FLANGE
24	2	OVER-FILL PREVENTION VALVE
25	1	*** LADDER ***
26	1	*** HOSE CABINET ***
27	1	50mm STEEL PIPE, SCH. 80, BLACK
28		200mm PVC PIPE, SCH. 80
29	6	200mm-90° PVC ELBOW, SCH. 80
30	4	200mm PVC FLANGE
31	2	BIRD SCREEN
32	2	340mm x 200mm PVC COMPANION FLANGE
33	1	50mm PRESSURE RELIEF VALVE
34	1	PRESSURE SWITCH
35	2	FLOAT VENT VALVE
36	2	100 x 100 x 50 EXTRACTOR VENT VALVE
37		
38	1	LEVELMETERS
39	1	100mm-50mm REDUCER
40	2	50mm FULL PORTED LOCKABLE BALL VALVE
41	1	VACUM GAUGE
42	1	PRESSURE GAUGE
43	1	GLOBE VALVE

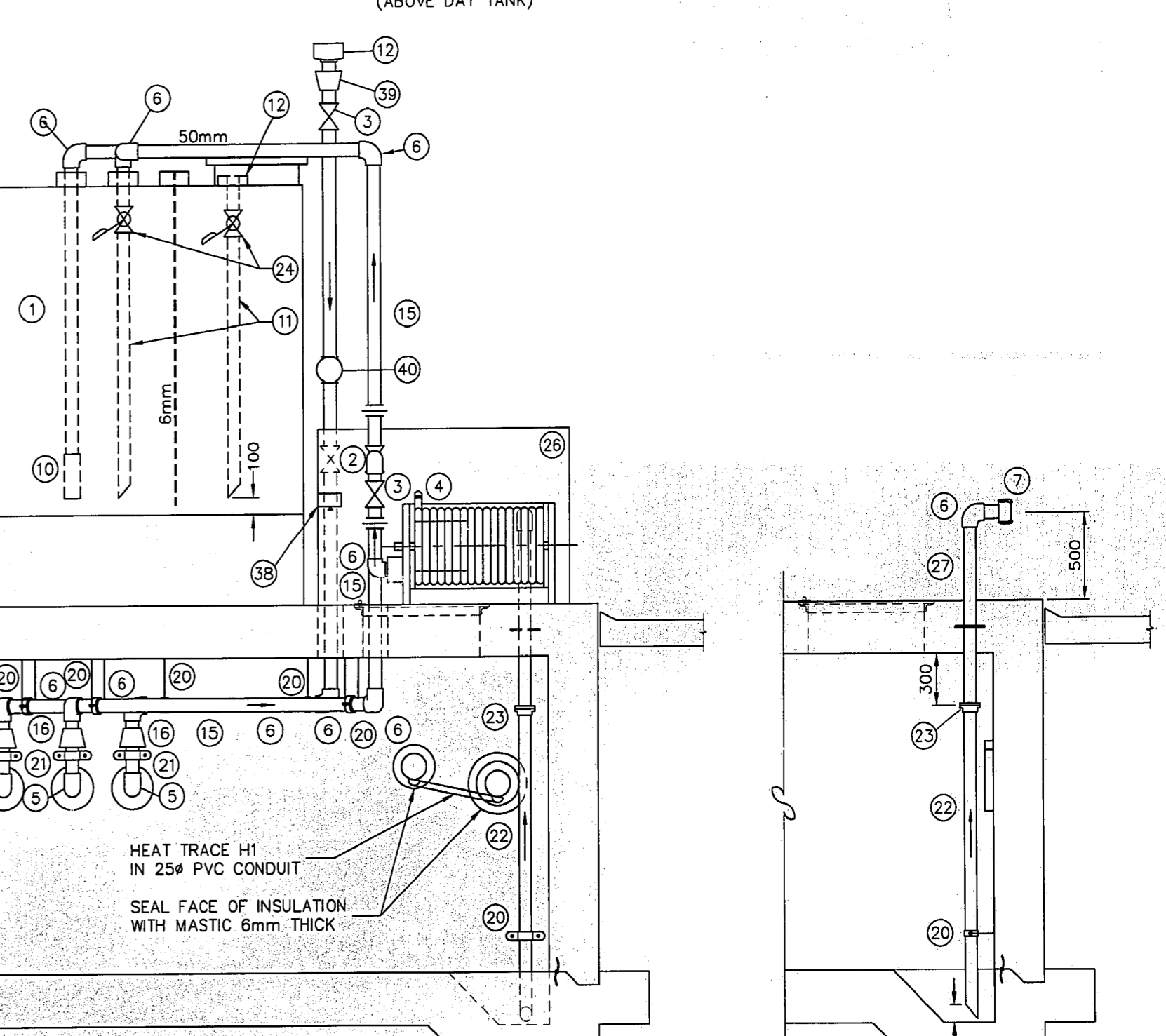
\*\*\* = SUPPLIED BY OWNER



FUEL OIL FLOW DIAGRAM  
N.T.S.

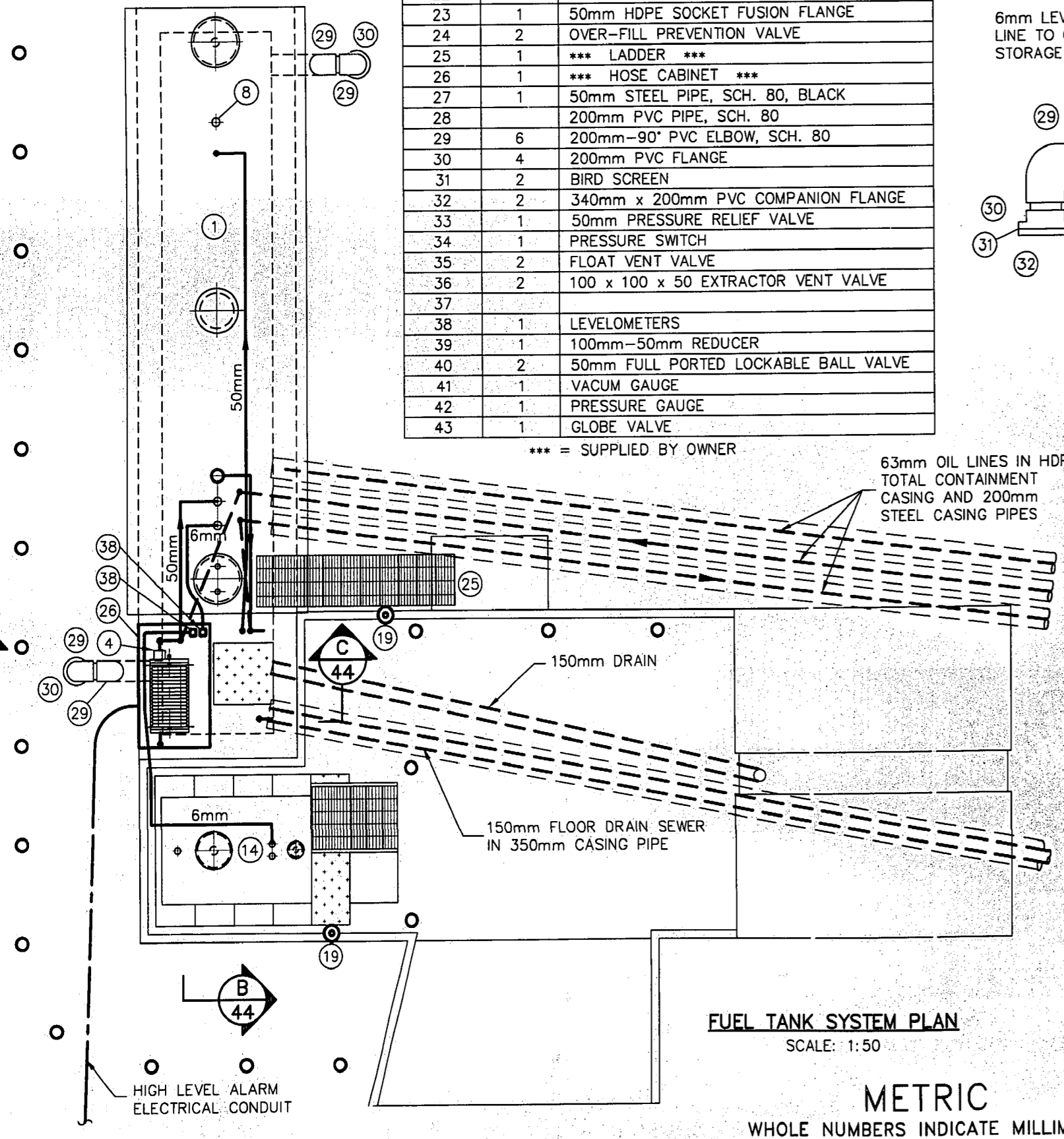


SECTION A  
SCALE: 1:25



SECTION B  
SCALE: 1:25

SECTION C  
SCALE: 1:25



FUEL TANK SYSTEM PLAN  
SCALE: 1:50

METRIC  
WHOLE NUMBERS INDICATE MILLIMETRES  
DECIMALIZED NUMBERS INDICATE METRES

REVISED AS CONSTRUCTED  
DATE 20/11/95 BY V.M.  
CHECKED BY B.D.E.

LOCATION APPROVED UNDERGROUND STRUCTURES  
SUPV. U/G STRUCTURES COMMITTEE DATE  
NOTE:  
LOCATION OF UNDERGROUND STRUCTURES AS SHOWN ARE BASED ON THE BEST INFORMATION AVAILABLE BUT NO GUARANTEE IS GIVEN THAT ALL EXISTING UTILITIES ARE SHOWN OR THAT THE GIVEN LOCATIONS ARE EXACT. CONFIRMATION OF EXISTENCE AND EXACT LOCATION OF ALL SERVICES MUST BE OBTAINED FROM THE INDIVIDUAL UTILITIES BEFORE PROCEEDING WITH CONSTRUCTION.

B.M. ELEV.	NO.	REVISIONS	DATE	BY
	2	REVISED TO ASBUILT	03/06/97	S.E.H.
	1	REVISED TO ASBUILT	17/11/95	V.M.

**IDE** I.D. ENGINEERING CANADA INC.  
Professional Engineers  
WINNIPEG, MANITOBA

DESIGNED BY F.R.J. CHECKED BY F.R.J.  
DRAWN BY R.M. & M.M. APPROVED BY B.L.F.

HOR. SCALE: AS SHOWN  
VERTICAL: DATE FEB. 14, 1994

ENGINEER'S  
PROVINCE OF MANITOBA  
ORIGINAL STAMPED BY  
F.R. JOHNSON  
P. ENG.  
31/3/94  
REGISTERED ENGINEER

CONSULTANT DRAWING NO.  
IB-54-515-M5-AB

**THE CITY OF WINNIPEG**  
WORKS AND OPERATIONS DIVISION  
WATERWORKS WASTE & DISPOSAL DEPARTMENT

SHOAL LAKE INTAKE FACILITY UPGRADING  
CITY DRAWING NUMBER  
SHEET 44 OF 154

FUEL SYSTEM DETAILS  
D-3842