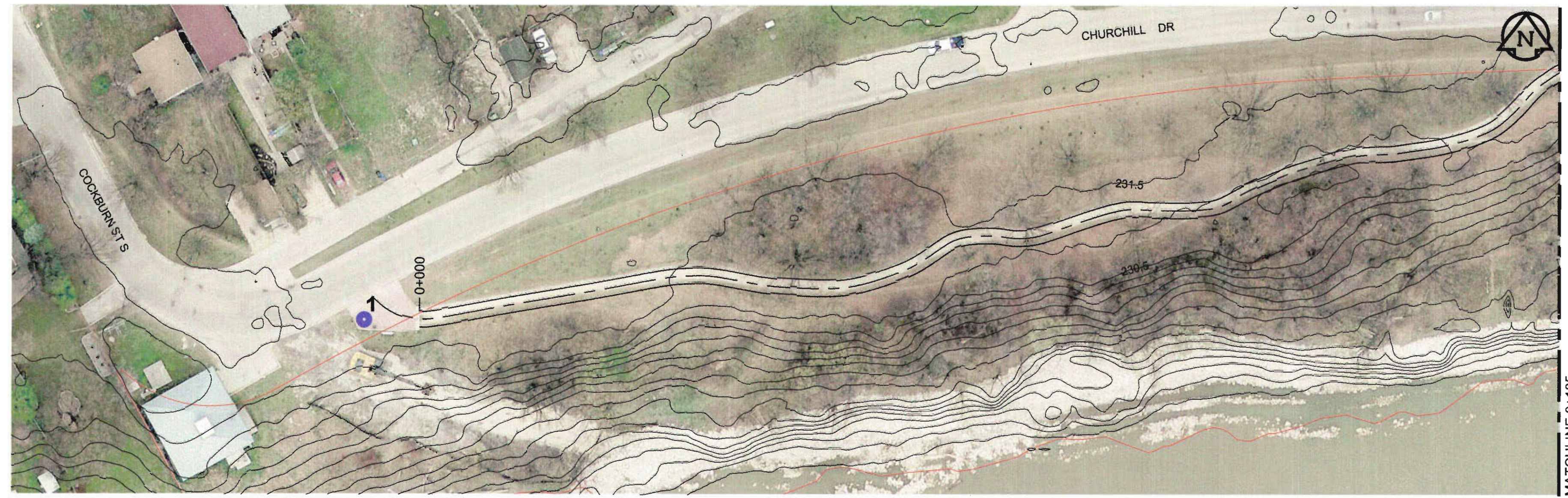




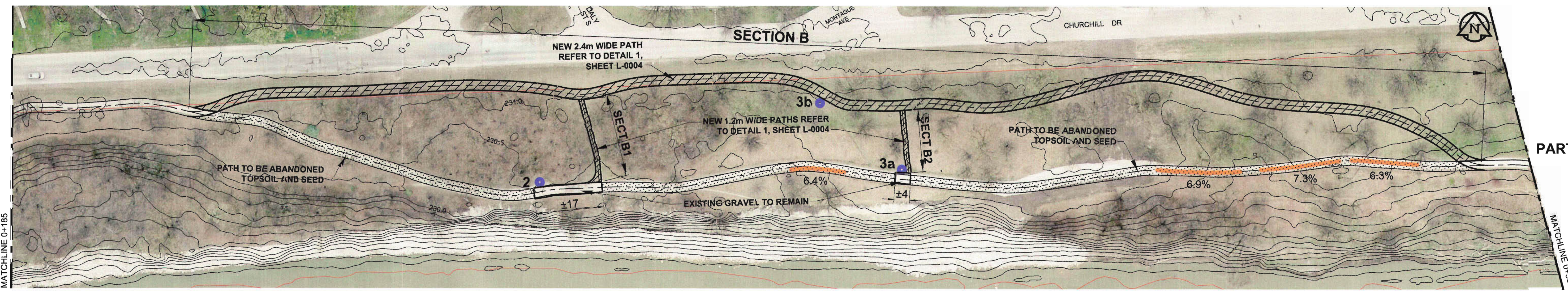
KEY PLAN NTS

- NOTE:
1. ABANDONED PATH TO BE HYDRO MULCHED.
 2. ALIGNMENT OF NEW PATH IS APPROXIMATE ONLY. ALIGNMENT TO BE FINALIZED ON SITE WITH CONTRACT ADMINISTRATOR.
 3. REFER TO TABLE ON SHEET L-0004 FOR LIST OF SITE AMENITIES TO REMAIN, REPLACED, OR REMOVED.



PART A

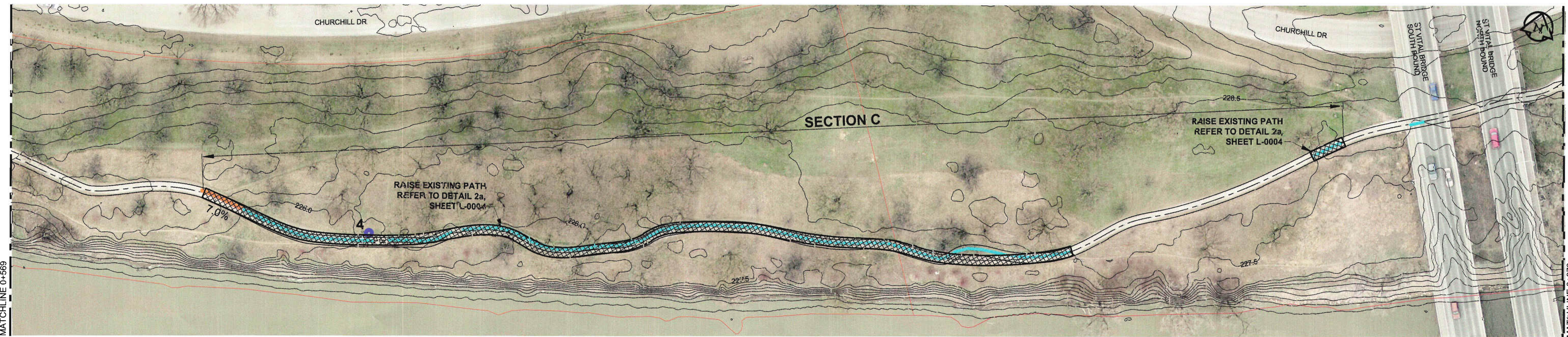
MATCHLINE 0+185



PART B

MATCHLINE 0+185

MATCHLINE 0+695



PART C

MATCHLINE 0+569

MATCHLINE 0+973

LEGEND

- EXISTING PATH
- NEW PATH
- PATH TO BE RAISED
- PATH TO BE ABANDONED TOPSOIL AND SEED
- SITE AMENITIES (BENCH AND/OR WASTE RECEPTACLE)
- PROPERTY LINE
- EXISTING PATHWAY DESIGN CONSIDERATIONS
- PATH SLOPE >5% (LONGITUDINAL)
- PATH ELEVATION BETWEEN 227.5 - 228.0

METRIC
WHOLE NUMBERS INDICATE MILLIMETRES
DECIMALIZED NUMBERS INDICATE METRES

SCALE: 1:500 (22"x34")

DESIGNED BY	LJV	CHECKED BY	DKH
DRAWN BY	LJV	APPROVED BY	<i>[Signature]</i>
HOR. SCALE	1:500	RELEASED FOR CONSTRUCTION	
VERT. SCALE	NA	DATE	
ISSUED FOR TENDER	14/09/15	DATE	
NO. REVISIONS		BY	

AECOM

DESIGNED BY: LJV
DRAWN BY: LJV
HOR. SCALE: 1:500
VERT. SCALE: NA

PROFESSIONAL'S SEAL
L. JOY VIBERG
member no. 125
Sept 15, 2015
CONSULTANT DRAWING NO. 60308648-SH-L-0001

THE CITY OF WINNIPEG
PLANNING, PROPERTY AND DEVELOPMENT DEPARTMENT

CHURCHILL DRIVE PARKWAY PATHWAY REFURBISHMENT

LANDSCAPING
COCKBURN ST. SOUTH (WEST ENTRANCE) TO OSBORNE ST. (ST VITAL BRIDGE)

SHEET 01 OF 04
CONSULTANT DWG No. REV
L-0001 0