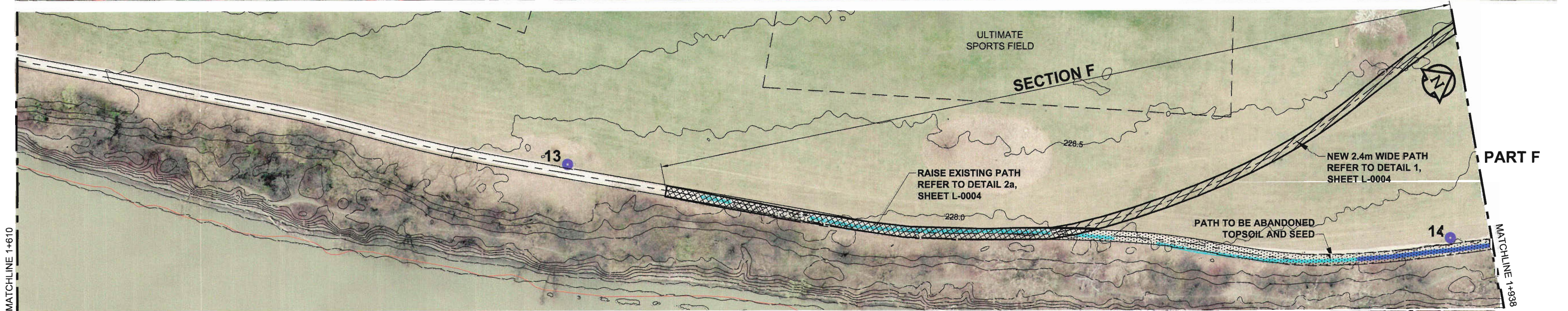
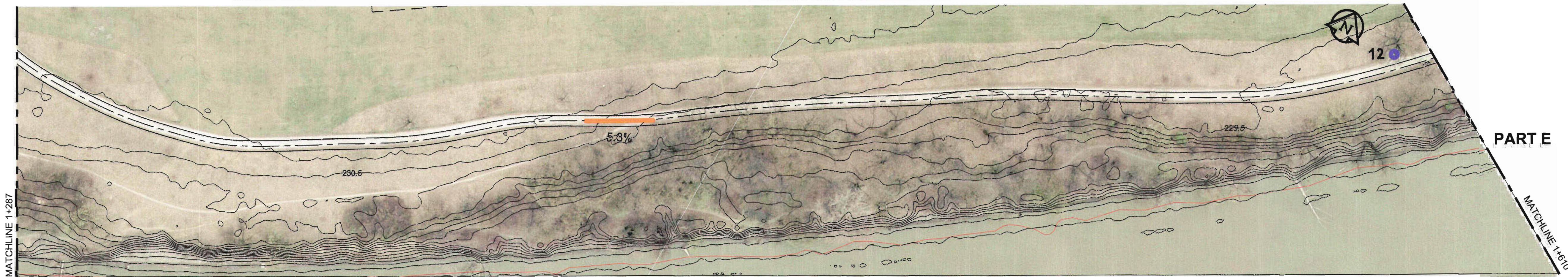
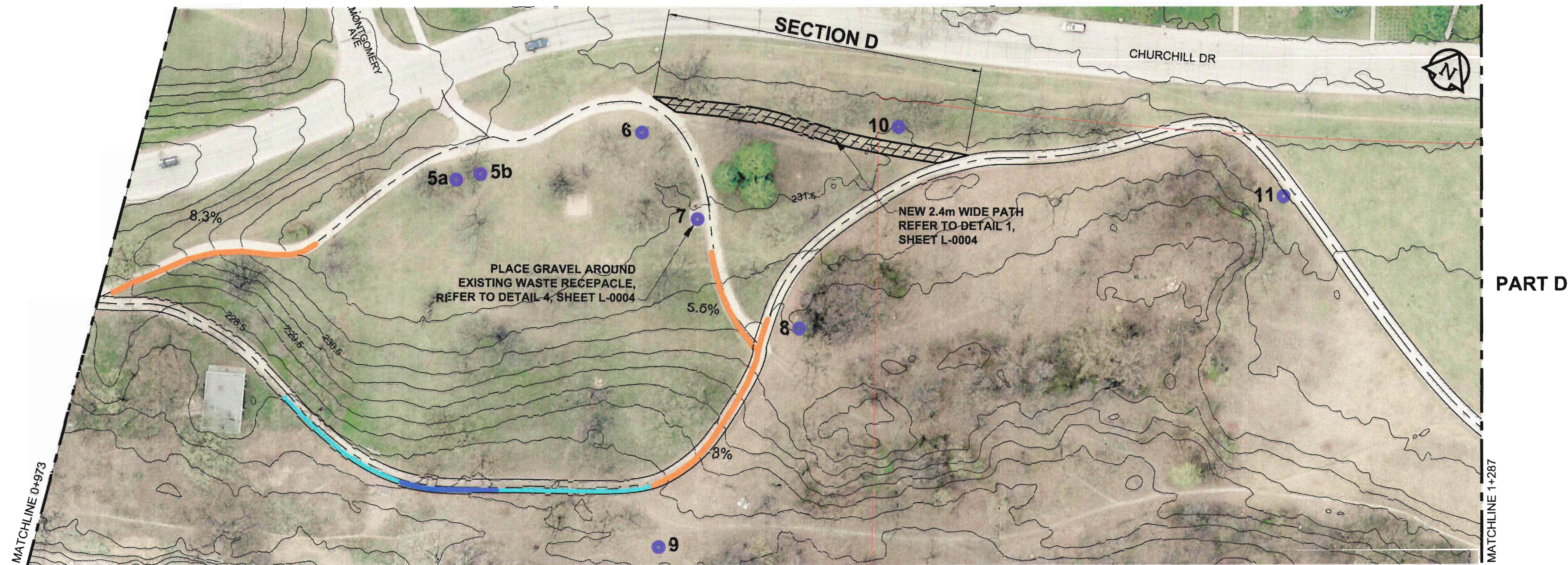


KEY PLAN NTS



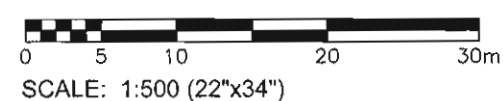
- NOTE:
1. ABANDONED PATH TO BE HYDRO MULCHED.
 2. ALIGNMENT OF NEW PATH IS APPROXIMATE ONLY. ALIGNMENT TO BE FINALIZED ON SITE WITH CONTRACT ADMINISTRATOR.
 3. REFER TO TABLE ON SHEET L-0004 FOR LIST OF SITE AMENITIES TO REMAIN, REPLACED, OR REMOVED.

LEGEND

- PATH EXISTING
- PATH NEW
- PATH TO BE RAISED
- PATH TO BE ABANDONED TOPSOIL AND SEED
- SITE AMENITIES (BENCH AND/OR WASTE RECEPTACLE)
- PROPERTY LINE

EXISTING PATHWAY DESIGN CONSIDERATIONS

- PATH SLOPE >5% (LONGITUDINAL)
- PATH ELEVATION BETWEEN 227.5 - 228.0
- PATH ELEVATION BETWEEN 227.0 - 227.5



METRIC
WHOLE NUMBERS INDICATE MILLIMETRES
DECIMALIZED NUMBERS INDICATE METRES

DESIGNED BY	LJV	CHECKED BY	DKH
DRAWN BY	LJV	APPROVED BY	
HOR. SCALE	1:500	RELEASED FOR CONSTRUCTION	Sept 15, 2014
VERT. SCALE	NA	CONSULTANT DRAWING NO.	60308648-SH-L-0001
ISSUED FOR TENDER	14/09/15	DATE	BY
NO.	REVISIONS	DATE	BY



THE CITY OF WINNIPEG
PLANNING, PROPERTY AND DEVELOPMENT DEPARTMENT

CHURCHILL DRIVE PARKWAY
PATHWAY REFURBISHMENT

LANDSCAPING
OSBORNE ST. (ST VITAL BRIDGE) TO MONTGOMERY AVE.

BID OPPORTUNITY NO. 903-2014

SHEET	02	OF	04
CONSULTANT DWG No.	L-0002	REV	0