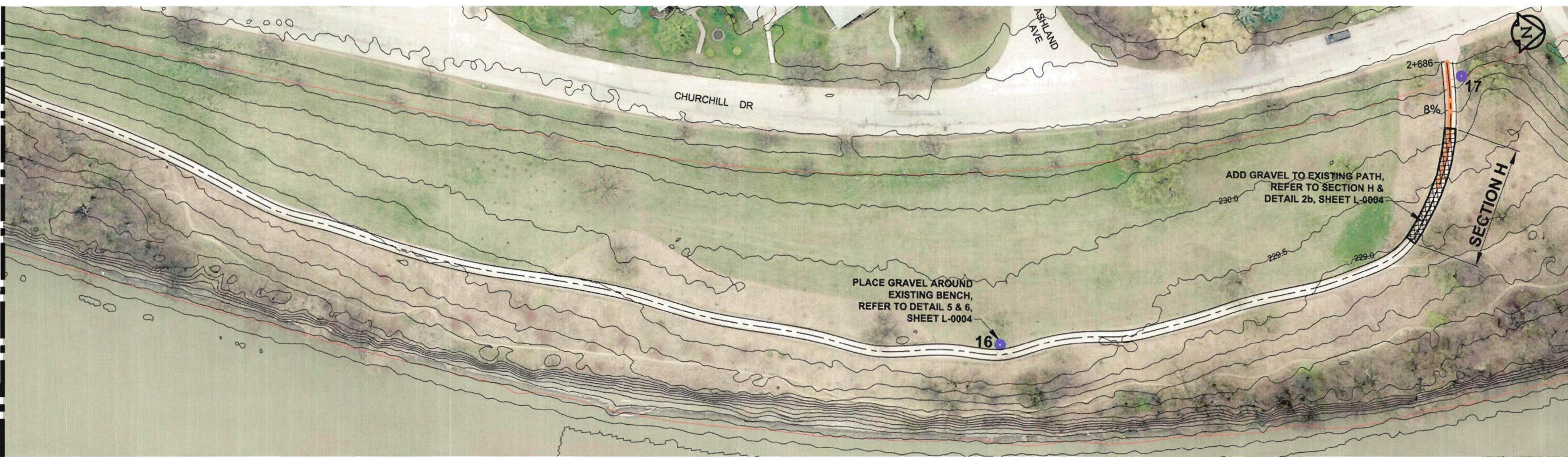
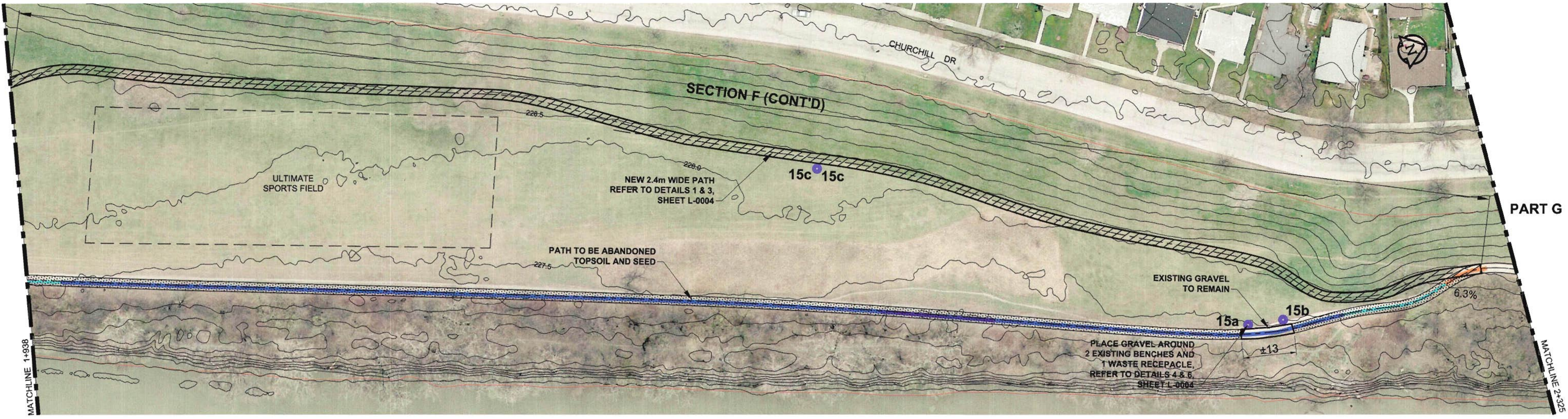


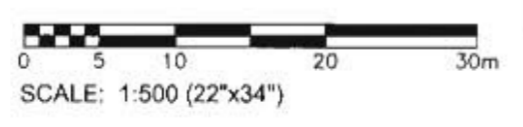
D SIZE 22" x 34" (560mm x 864mm)



- NOTE:**
1. ABANDONED PATH TO BE HYDRO MULCHED.
 2. ALIGNMENT OF NEW PATH IS APPROXIMATE ONLY. ALIGNMENT TO BE FINALIZED ON SITE WITH CONTRACT ADMINISTRATOR.
 3. REFER TO TABLE ON SHEET L-0004 FOR LIST OF SITE AMENITIES TO REMAIN, REPLACED, OR REMOVED.

LEGEND

	PATH EXISTING		PROPERTY LINE
	PATH NEW		EXISTING PATHWAY DESIGN CONSIDERATIONS
	PATH TO BE RAISED		PATH SLOPE (LONGITUDINAL) >5%
	PATH TO BE ABANDONED TOPSOIL & SEED		PATH ELEVATION BETWEEN 227.5 - 228.0
	SITE AMENITIES (BENCH AND/OR WASTE RECEPTACLE)		PATH ELEVATION BETWEEN 227.0 - 227.5
			PATH ELEVATION BETWEEN 226.5 - 227.0



METRIC
WHOLE NUMBERS INDICATE MILLIMETRES
DECIMALIZED NUMBERS INDICATE METRES

DESIGNED BY: LJV		CHECKED BY: DKH	
DRAWN BY: LJV		APPROVED BY: [Signature]	
HOR. SCALE: 1:500		RELEASED FOR CONSTRUCTION: [Date]	
VERT. SCALE: NA		DATE: [Date]	
ISSUED FOR TENDER: 14/09/15		LJV	
NO. REVISIONS		DATE BY	



PROFESSIONAL'S SEAL

 L. JOY VIBERG
 member no. 125
 Sept 15, 2014
 CONSULTANT DRAWING NO.
 60308648-SH-L-0001

THE CITY OF WINNIPEG
 PLANNING, PROPERTY AND DEVELOPMENT DEPARTMENT

CHURCHILL DRIVE PARKWAY
 PATHWAY REFURBISHMENT

LANDSCAPING
 MONTGOMERY AVE. TO BALTIMORE RD. (NORTH ENTRANCE)

SHEET 03 OF 04
 CONSULTANT DWG No. REV
L-0003 0

BID OPPORTUNITY NO. 903-2014