

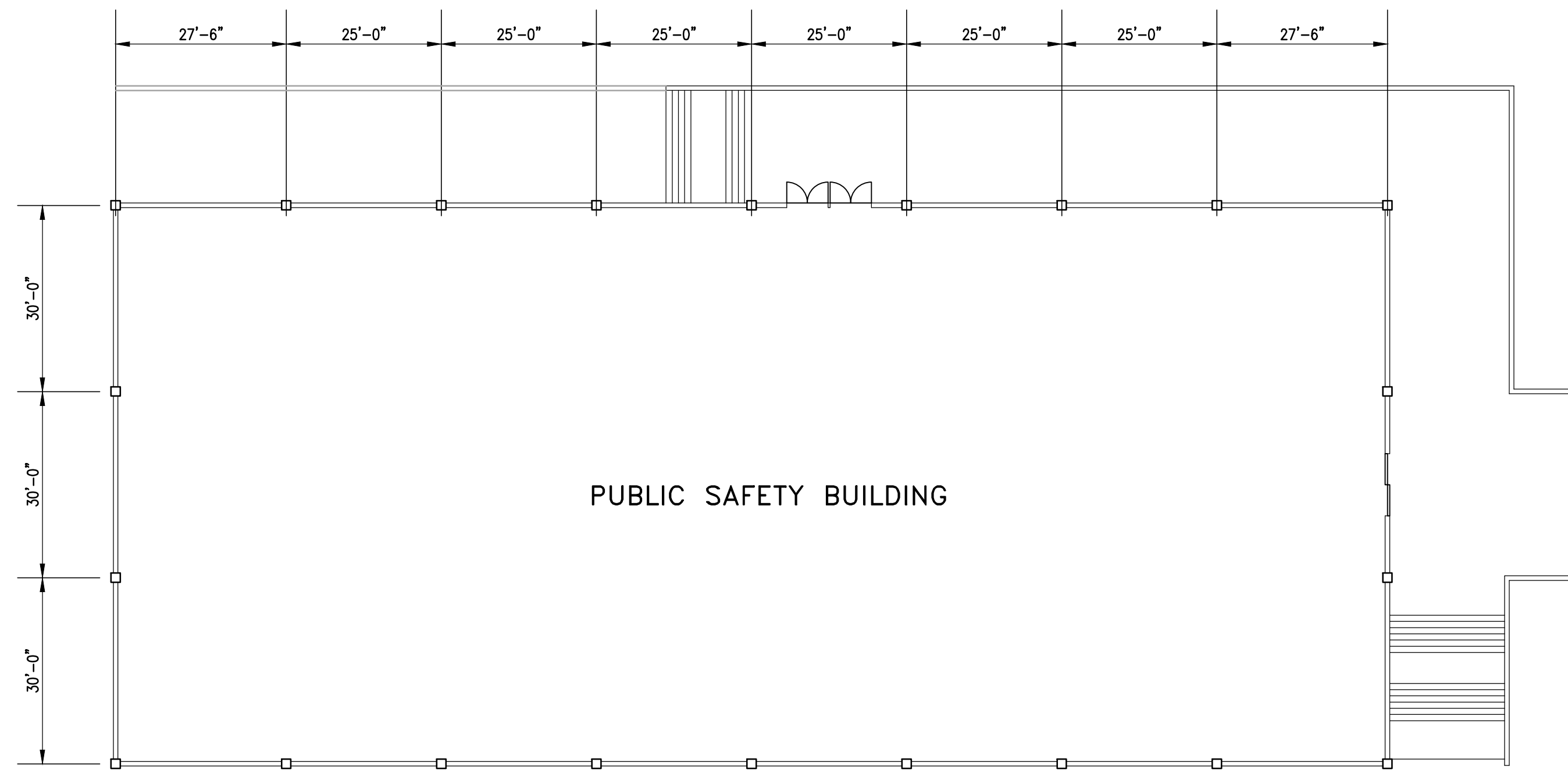
FILE NAME:

DATE:

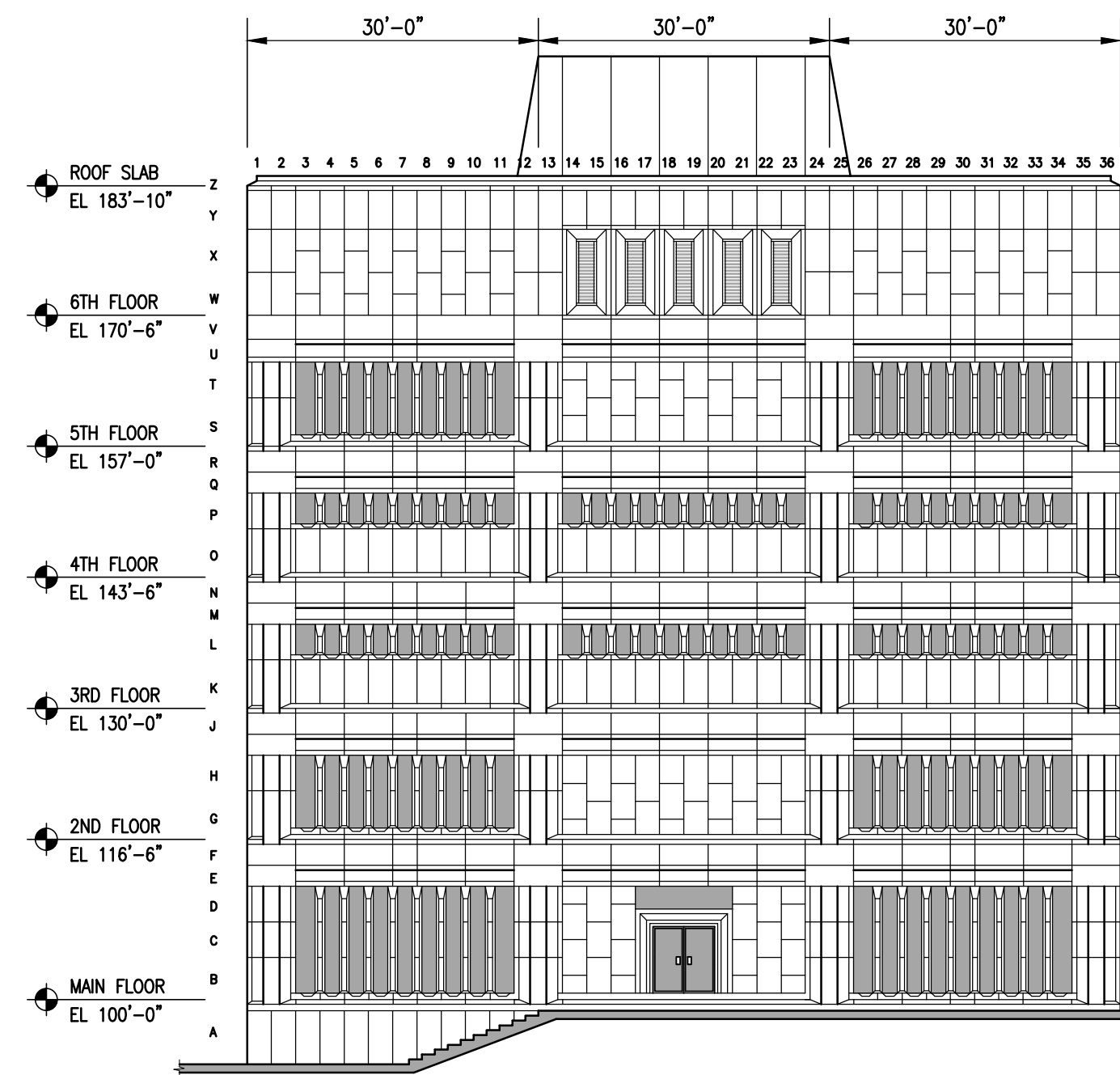
DESCRIPTION:

PROJECT No.:

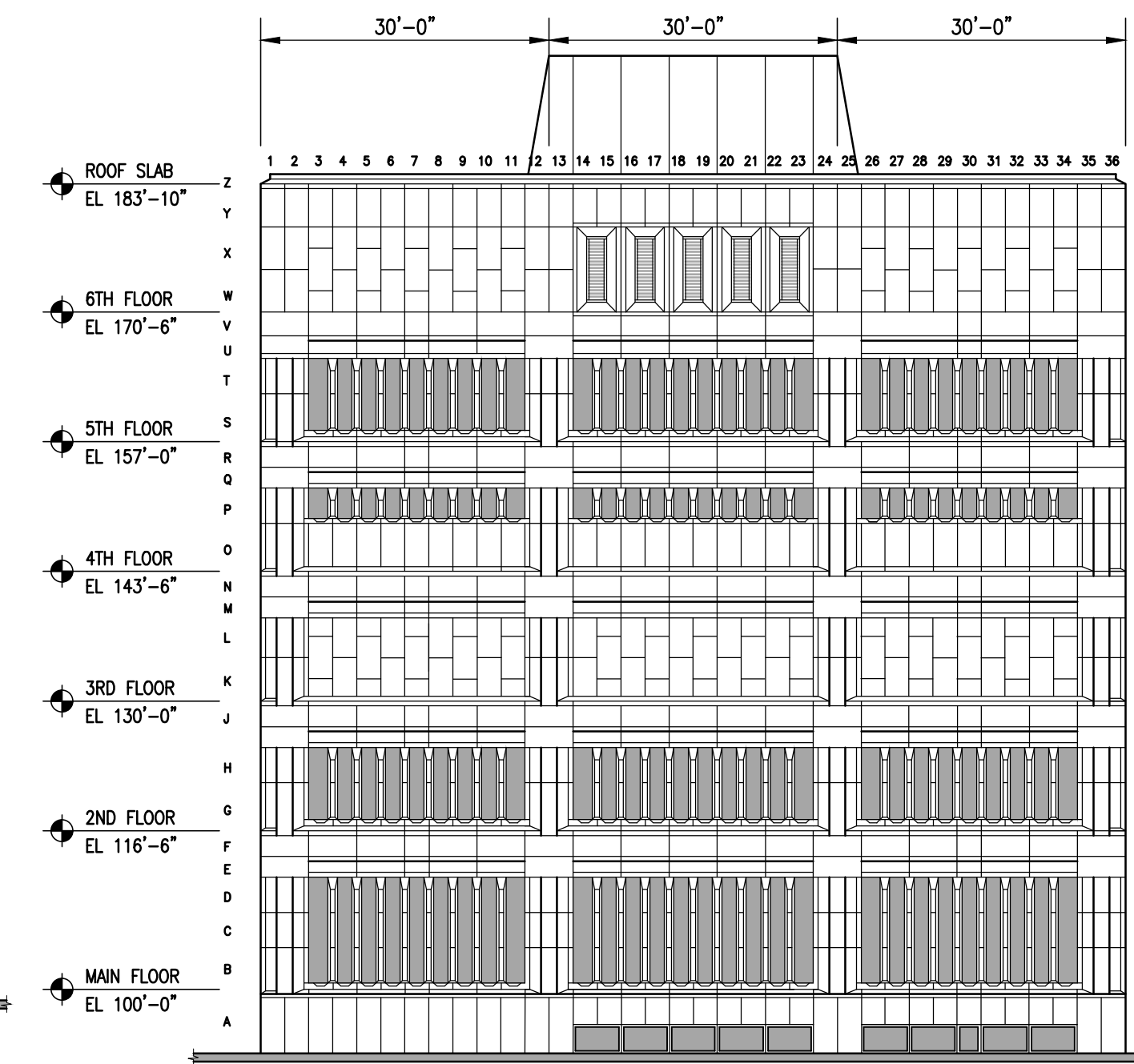
ADDRESS:



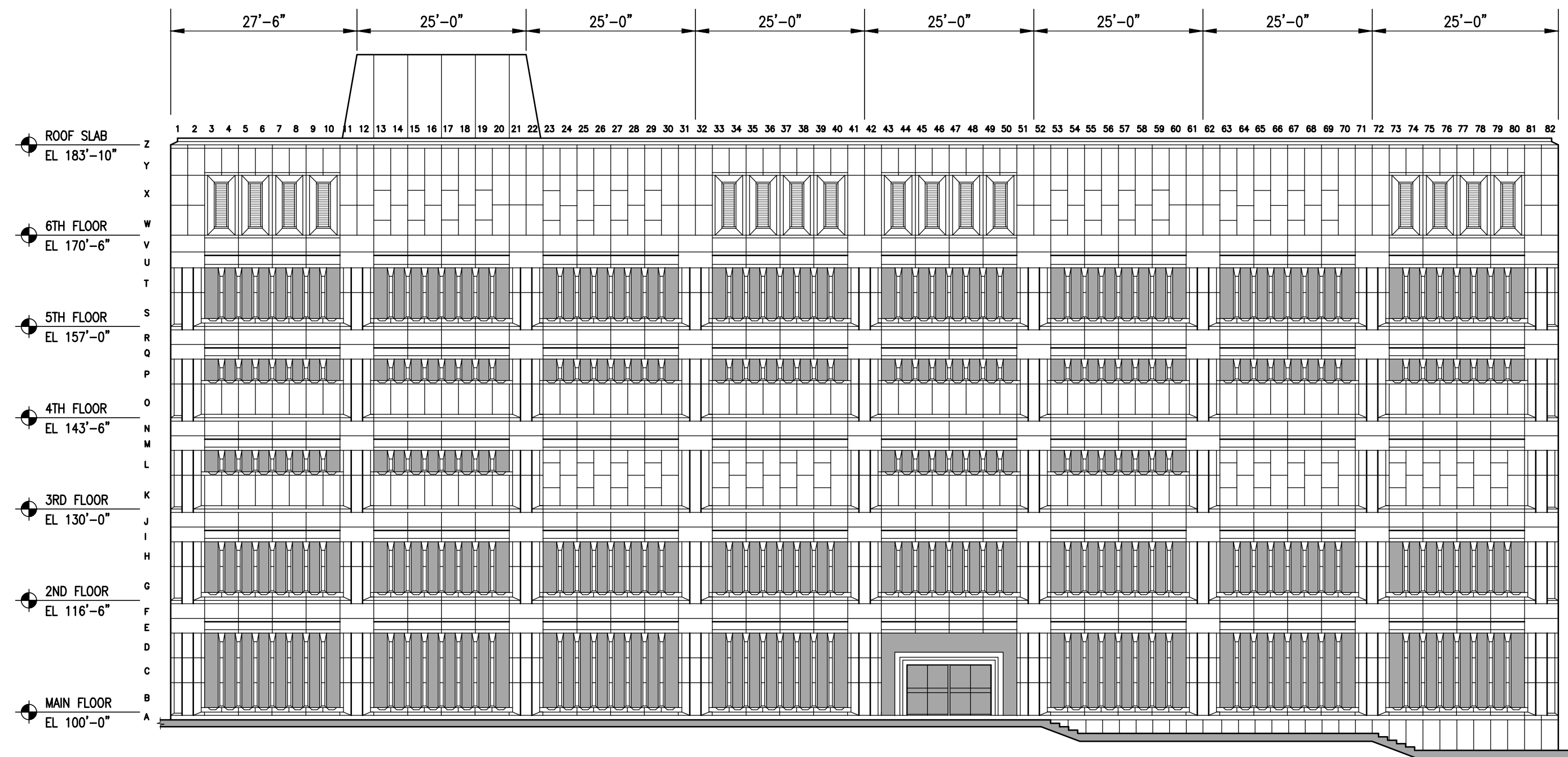
**BUILDING PLAN**  
1/16" = 1'-0"



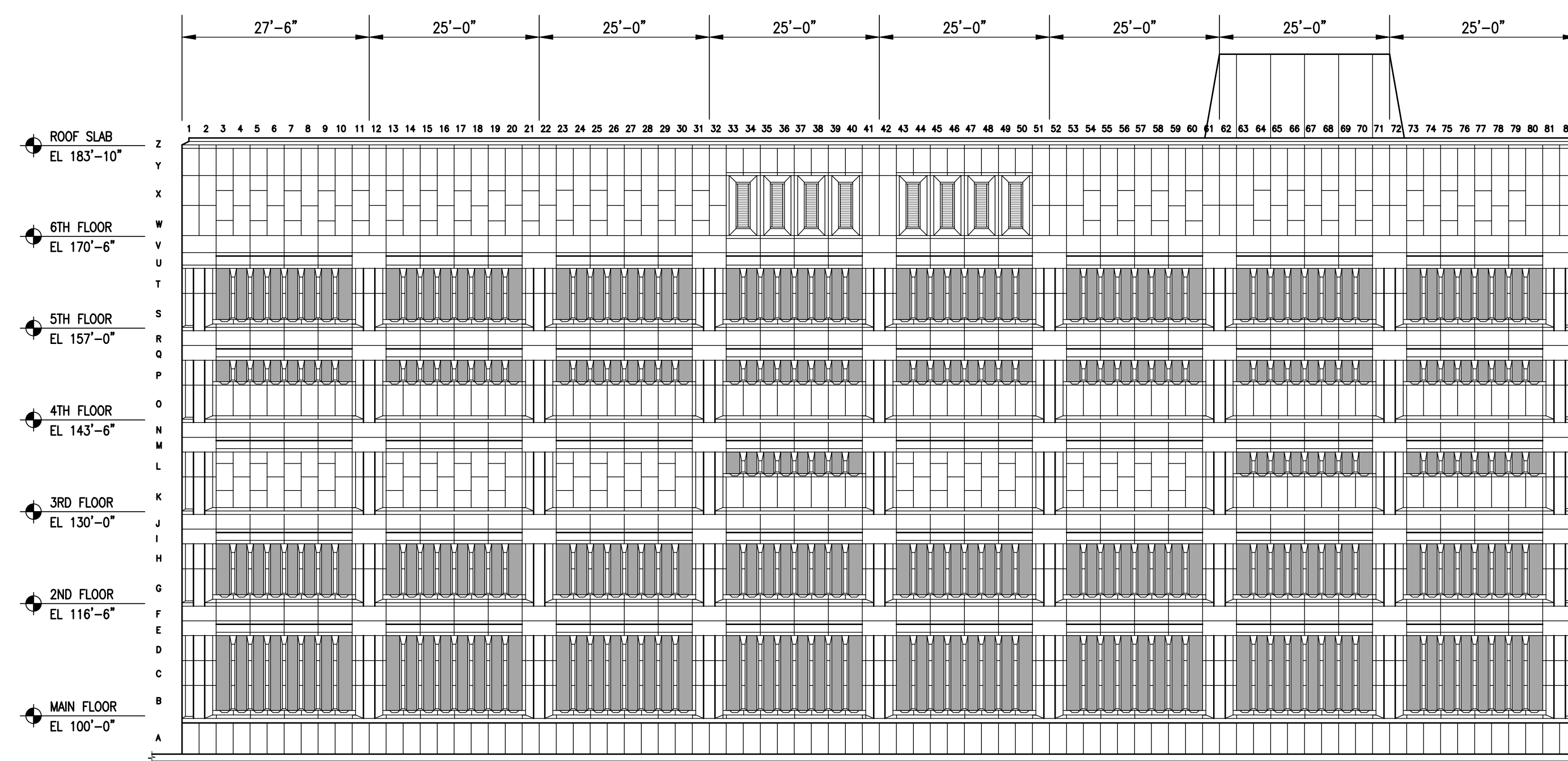
**NORTH ELEVATION**  
1/16" = 1'-0"



**SOUTH ELEVATION**  
1/16" = 1'-0"



**WEST ELEVATION**  
1/16" = 1'-0"



**EAST ELEVATION**  
1/16" = 1'-0"

NOTES :

300-275 Carlton Street  
Winnipeg, Manitoba R3C 5R6  
T 204. 943. 7501  
F 204. 943. 7507  
2014-1061

**Crosier Kilgour & Partners Ltd.**  
CONSULTING STRUCTURAL ENGINEERS

NO.	REVISION/DESCRIPTION	BY	DATE
1	ISSUED FOR BID	SWW	9/25

DRAWN BY	CHECKED BY	APPROVED	DATE
JSR	SWW	JAW	2014.09.25

**Winnipeg** CITY OF WINNIPEG  
PLANNING, PROPERTY &  
DEVELOPMENT DEPARTMENT  
CIVIC ACCOMMODATIONS DIVISION  
300 - 65 GARRY ST. R3C 4K4

PROJECT  
PUBLIC SAFETY BUILDING  
151 PRINCESS STREET  
2014 CLADDING STABILIZATION  
WINNIPEG, MANITOBA

SHEET TITLE  
PLAN VIEW & ELEVATION

SCALE	PROJECT NO.	SHEET NO.
AS NOTED	2014-1061	SK-1

DRAWING SHEET SIZE: 24x36 PLOT 1:1