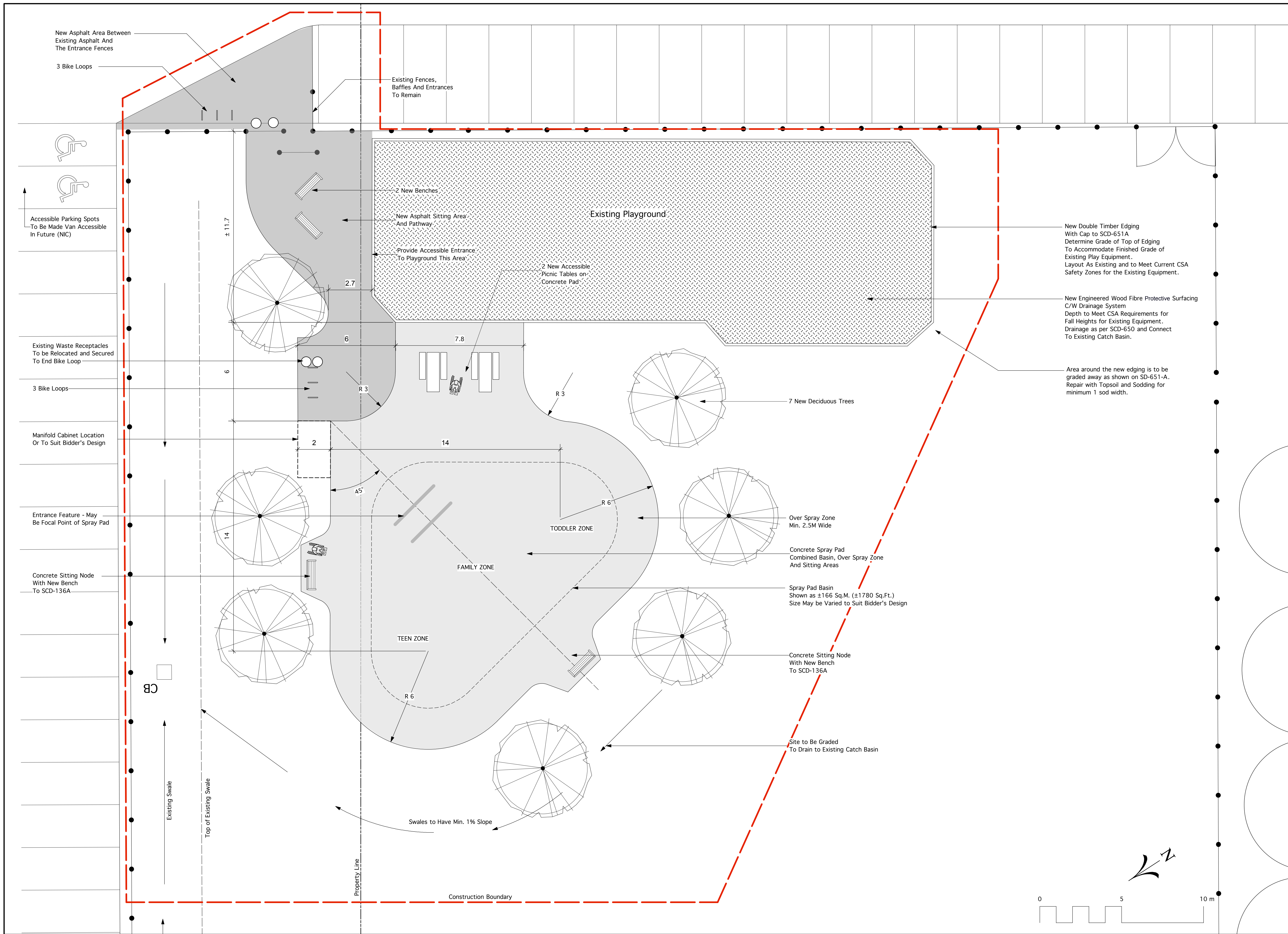


RELEASED FOR TENDER
 OCTOBER 3, 2014



New Double Timber Edging With Cap to SCD-651A Determine Grade of Top of Edging To Accommodate Finished Grade of Existing Play Equipment. Layout As Existing and to Meet Current CSA Safety Zones for the Existing Equipment.

New Engineered Wood Fibre Protective Surfacing C/W Drainage System Depth to Meet CSA Requirements for Fall Heights for Existing Equipment. Drainage as per SCD-650 and Connect To Existing Catch Basin.

Area around the new edging is to be graded away as shown on SD-651-A. Repair with Topsoil and Sodding for minimum 1 sod width.



Location of underground structures as shown are based on the best information available but no guarantee is given that all existing utilities are shown or that the given locations are exact. Confirmation of existence and exact location of all services must be obtained from the individual utilities before proceeding with construction.

DO NOT SCALE DRAWING - PLOT MAY NOT BE AT 100%

9			
8			
7			
6			
5			
4			
3			
2			
1			

NO. REVISION / NOTE DATE BY

PROJECT
 GATEWAY SPRAY PAD
 GATEWAY SPORTSPLEX
 GATEWAY RD. AND BONNER AVE.
 WINNIPEG, MANITOBA

SCALE 1:100

DATE OCTOBER 3, 2014

DRAWN BY LLW PROJECT NO. 1411

CHECKED BY DW DRAWING TITLE

CONCEPTUAL DESIGN

SHEET NO.