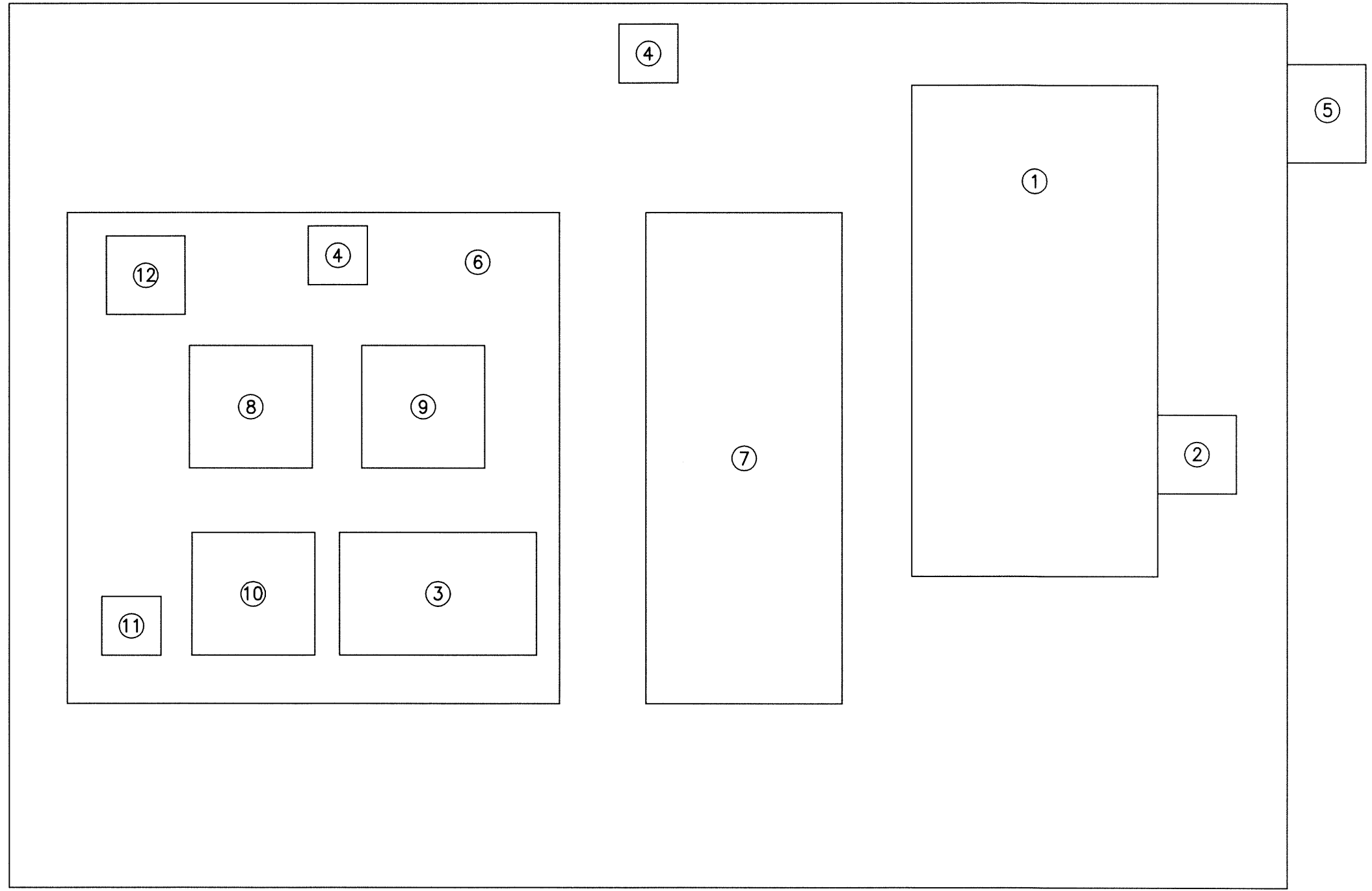


1 SITE PLAN

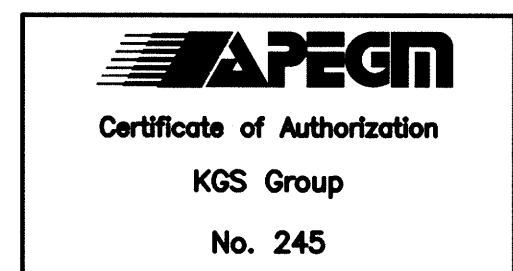
- NOTES:**
- PAD MOUNTED ENCLOSURE TO INCLUDE ALL POWER DISTRIBUTION EQUIPMENT, CONTROLS, INSTRUMENTATION, PUMP STARTER, AND COMMUNICATION EQUIPMENT. UTILITY METER TO BE MOUNTED ON SIDE OF ENCLOSURE FOR INCOMING UNDERGROUND SERVICE CONDUCTORS BY MANITOBA HYDRO. ENCLOSURE SHALL BE NEMA 4 RATED.
  - RTU CABINET SHALL BE COMPLETE WITH ENVIRONMENTAL CONTROLS AND LUMINAIRE COMPLETE WITH DOOR SWITCH. CABINET SHALL BE NEMA 4 RATED AND INCLUDE A LOCKING MECHANISM. REFER TO APPENDIX C OF TENDER DOCUMENTS FOR PREFERRED LAYOUT OF COMPONENTS WITHIN THE RTU CABINET.
  - ENCLOSURE LUMINAIRE TO BE EQUIPPED WITH A LED SOURCE AND CONTROLLED BY EITHER TOGGLE SWITCH OR RTU CABINET DOOR SWITCH. ACCEPTABLE LUMINAIRE INCLUDES PHILIPS EW PROFILE POWERCORE SERIES OR EQUIVALENT.
  - LEVEL TRANSMITTER MOUNTED IN DOOR OF RTU CABINET.

- LEGEND:**
- ELECTRICAL EQUIPMENT
  - CONDUIT SLEEVE
  - COPPER CLAD GROUND ELECTRODE (20mmØ x 3000mm)



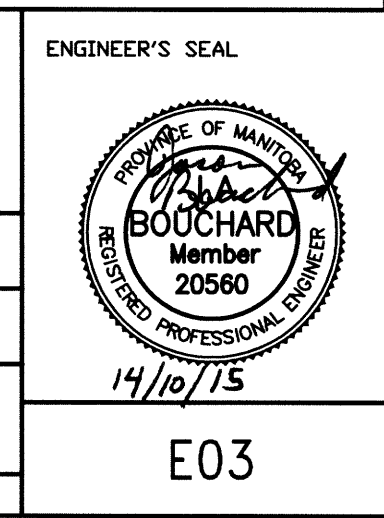
2 ENCLOSURE-FRONT ELEVATION  
SCALE: N.T.S.

| EQUIPMENT LIST: |   |
|-----------------|---|
| No.             | DESCRIPTION                                   |
| 1               | MAIN DISTRIBUTION PANEL                       |
| 2               | SURGE PROTECTION DEVICE                       |
| 3               | UPS   |
| 4               | LUMINAIRE (NOTE 3)                            |
| 5               | METER   |
| 6               | RTU CABINET (NOTE 2)                          |
| 7               | PUMP STARTER                                  |
| 8               | SIEMENS MILTRONICS LEVEL TRANSMITTER (NOTE 4) |
| 9               | PHOENIX CONTACT SCADA PACK 334                |
| 10              | LAND LINE MODEM                               |
| 11              | 15A, 120V SINGLE RECEPTACLE                   |
| 12              | RTU CABINET LOW TEMPERATURE ALARM             |



**METRIC**  
WHOLE NUMBERS INDICATE MILLIMETRES  
DECIMALIZED NUMBERS INDICATE METRES

| FIELD BOOK #:  |                   | DESIGNED BY SEB     |             | CHECKED BY <i>MB</i>      |  |
|----------------|-------------------|---------------------|-------------|---------------------------|--|
| POSTED TO LBIS |                   | DRAWN BY JPL        | APPROVED BY |                           |  |
|                |                   | HOR. SCALE AS NOTED |             | RELEASED FOR CONSTRUCTION |  |
|                |                   | VERTICAL AS NOTED   |             |                           |  |
| 0              | ISSUED FOR TENDER | 14/10/14            | <i>MB</i>   | 2014 08 07                |  |
| NO.            | REVISIONS         | DATE                | BY          | DATE                      |  |



**THE CITY OF WINNIPEG**  
WATER AND WASTE DEPARTMENT

LEE BLVD OUTLET CHAMBER UPGRADES

**ELECTRICAL**  
SITE PLAN

SHEET 1 OF 1  
CITY DRAWING NUMBER  
1-0539L-E0003-001

E03