

WARNING
 IF POWER EQUIPMENT OR EXPLOSIVES ARE TO BE USED FOR EXCAVATION ON THIS PROJECT THE CONTRACTOR MUST:
 1) OBTAIN CLEARANCE FROM THE GAS UTILITY PRIOR TO EXCAVATION.
 2) TAKE PRECAUTION TO AVOID DAMAGE TO GAS UTILITY INSTALLATIONS.
 SEE PROVINCIAL REGULATION 210/72 FOR DETAILS

PRELIMINARY
 NOT TO BE USED FOR CONSTRUCTION

BID OPPORTUNITY NO. 922-2014

EXISTING	LEGEND - PLAN	PROPOSED	EXISTING	LEGEND - PLAN	PROPOSED	EXISTING	LEGEND - PROFILE	PROPOSED
⊕	HYDRANT	⊕	---	LDS/WWS	---	---	CENTER LINE	---
⊙	VALVE	⊙	---	WATERMAIN	---			
⊚	CURB STOP	⊚	---	GAS	---			
▬	CONCRETE SIDEWALK	▬	---	TRAFFIC SIGNALS	---			
○	O.L.S.	○	---	ASPHALT	---			
○	MANHOLE	○	---	CURB RENEWAL	---			
□	CATCH BASIN	□	231.000	ELEVATIONS	[231.000]			
△	CURB INLET	△	---	PROPERTY LINE	---			
☆	HYDRO POLE	☆	---	SURVEY BAR	---			
⊙	TRAFFIC SIGNAL POLE	⊙	---	GEODETIC BENCH MARK	---			
			---	RAMP CURB	---			

LOCATION APPROVED UNDERGROUND STRUCTURES

DATE

NOTE:
 LOCATION OF UNDERGROUND STRUCTURES AS SHOWN ARE BASED ON THE BEST INFORMATION AVAILABLE. BUT NO GUARANTEE IS GIVEN THAT ALL EXISTING UTILITIES ARE SHOWN OR THAT THE GIVEN LOCATIONS ARE EXACT. CONFIRMATION OF EXISTENCE AND EXACT LOCATION OF ALL SERVICES MUST BE OBTAINED FROM THE INDIVIDUAL UTILITIES BEFORE PROCEEDING WITH CONSTRUCTION.

NO.	REVISIONS	DATE	BY

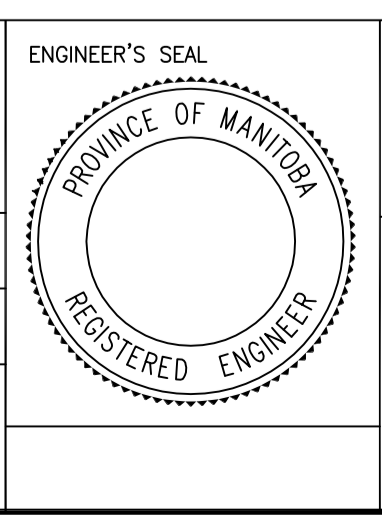
B.M. ELEV. I.B NE CORNER HYDRO LOT 232.240 (NOT SHOWN)

**ENGINEERING DIVISION
 TECHNOLOGY SERVICES BRANCH
 106 - 1155 PACIFIC AVE**

DESIGNED BY E.H. CHECKED BY R.K.D/R.W.
 DRAWN BY E.H. APPROVED BY

HOR. SCALE: 1 : 500
 VERTICAL: 1 : 25

DATE 2014/09/18



**THE CITY OF WINNIPEG
 PUBLIC WORKS DEPARTMENT**

**WAVERLEY WEST PATHWAY FROM
 APPLE TREE CRESCENT TO BISHOP GRANDIN BOULEVARD**
 FROM 1+00 TO 3+08
 NEW ASPHALT PATH
 FROM APPLE TREE CR. TO BISHOP GRANDIN

CITY DRAWING NUMBER SE-14-20
 SHEET 1 OF 1

1