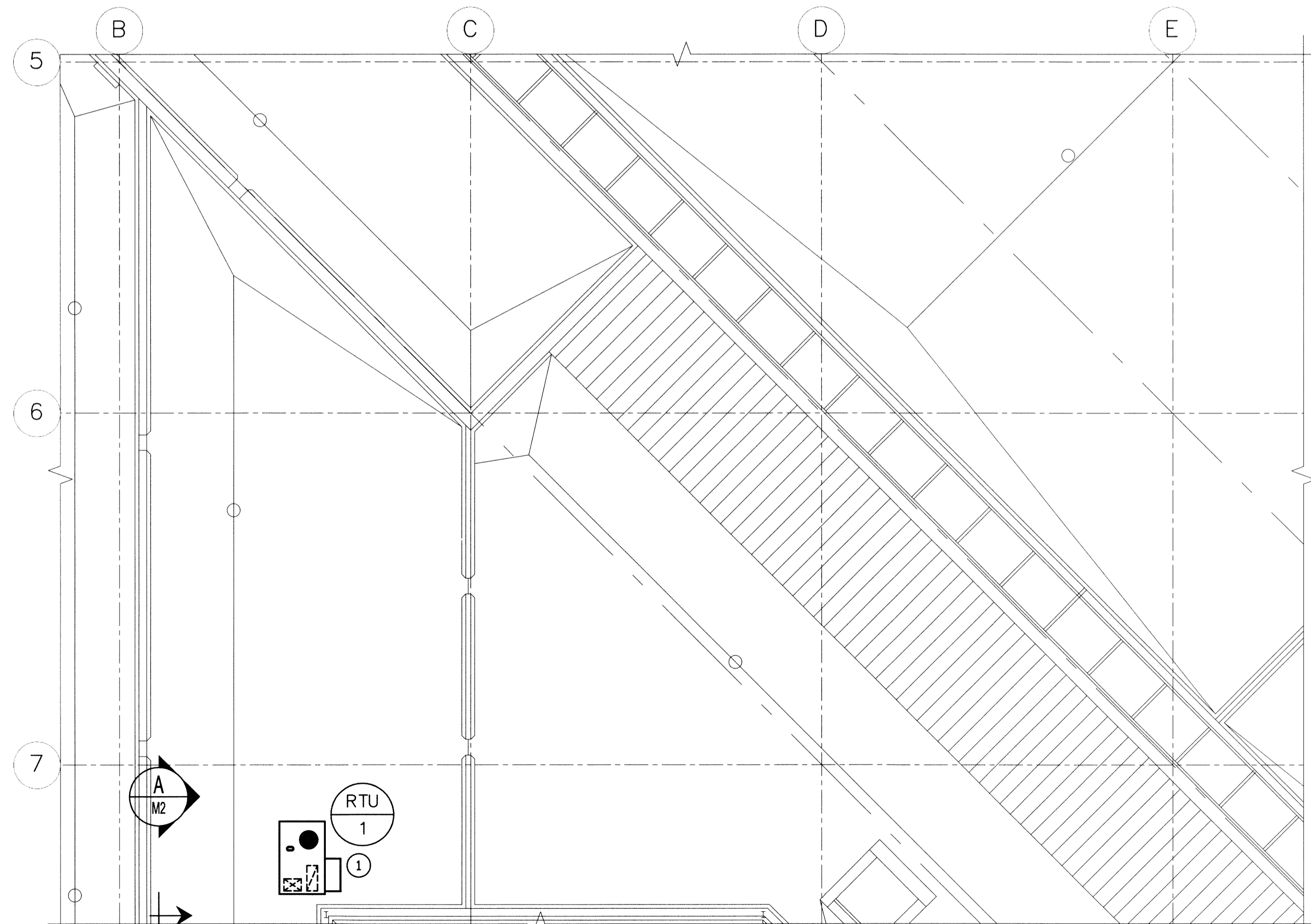
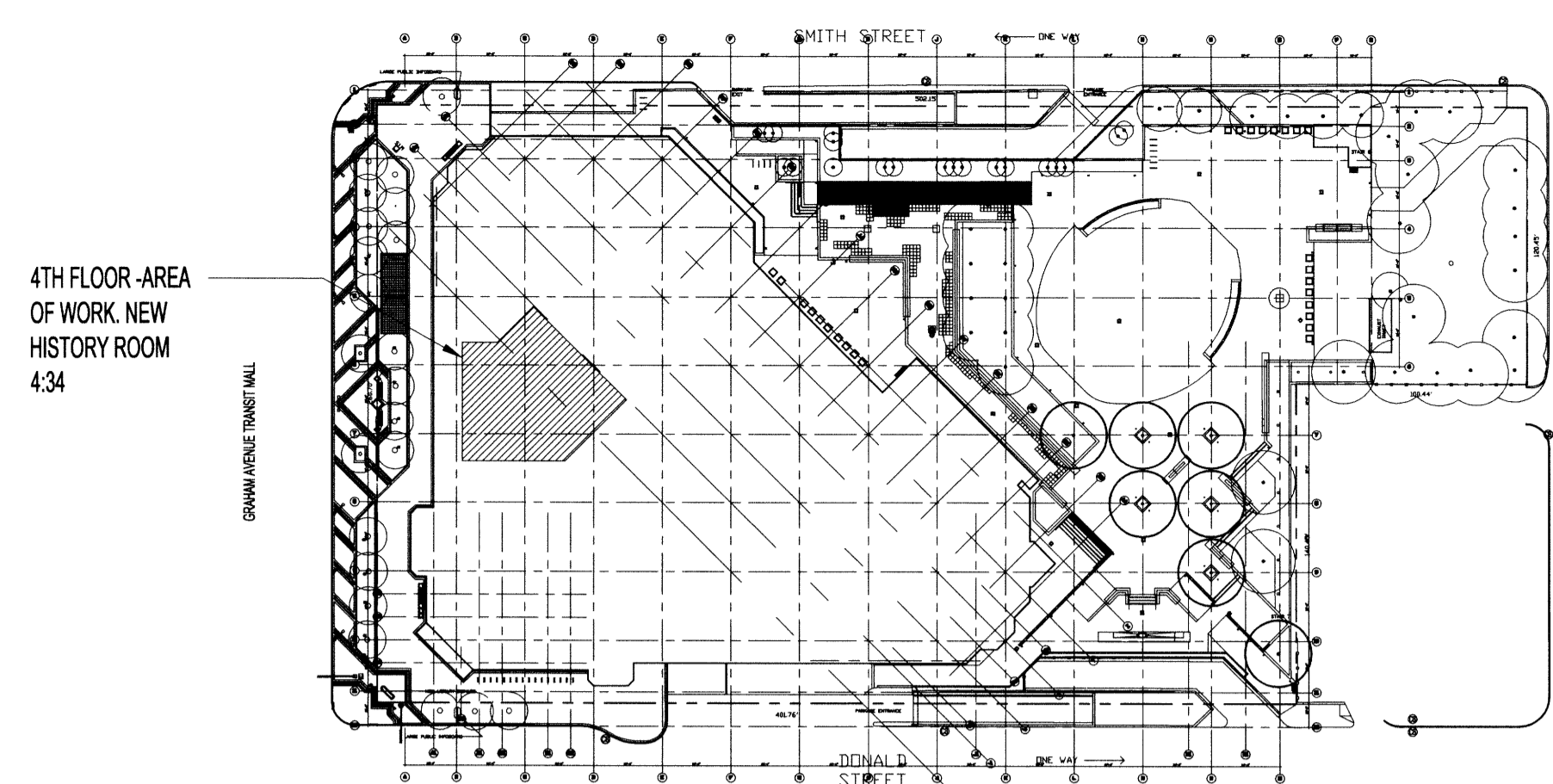


PARTIAL FOURTH FLOOR PLAN - NEW HVAC
SCALE: 1/8"=1'-0"



PARTIAL ROOF PLAN - NEW HVAC
SCALE: 1/8"=1'-0"



KEY PLAN
SCALE: N.T.S.

GRILLE SCHEDULE:

TYPE	MANUFACTURER	MODEL	BORDER	CORE	VOLUME CONT.	FRAME	FASTENING	FINISH	REMARKS
A	PRICE	LCMD	-	-	-	-	-	PC12	SUPPLY DIFFUSER**

** TO MATCH EXISTING DIFFUSERS IN PREVIOUS LOCAL HISTORY ROOM 3:79. PROVIDE SQUARE TO ROUND ADAPTER TO CONNECT TO 10" FLEXIBLE DUCT.

GENERAL NOTES:

- PERFORM WORK IN ACCORDANCE TO ALL APPLICABLE CODES AND REGULATIONS. CONFORM TO SMACNA STANDARDS FOR SUPPLY AND INSTALLATION OF DUCTWORK.
- REVIEW EQUIPMENT LOCATIONS WITH CONTRACT ADMINISTRATOR PRIOR TO INSTALLATION.
- EQUIPMENT LOCATIONS, DUCT ROUTING INDICATED ON THE DRAWINGS IS APPROXIMATE ONLY. CONFIRM IN THE FIELD. REROUTE DUCTING AS REQUIRED TO ELIMINATE FIELD INTERFERENCES WITH BUILDING STRUCTURES, ELECTRICAL, PLUMBING, ETC. CONFIRM CHANGES WITH CONTRACT ADMINISTRATOR. CO-ORDINATE WORK WITH ALL SUBTRADES. WHERE DIMENSIONS ARE INDICATED FOR DUCTING, EQUIPMENT SIZES, ETC. THESE ARE FOR BIDDING PURPOSES ONLY. VERIFY ALL DIMENSIONS IN THE FIELD PRIOR TO ORDERING EQUIPMENT AND COMMENCING INSTALLATION WITHOUT EXTRA CHARGES TO THE PROJECT. ENSURE ALL EQUIPMENT AND DUCTING FITS IN THE SPACE AVAILABLE AND TO MAINTAIN THE GENERAL DESIGN INTENT FOR THE SYSTEMS.
- PROVIDE AND SEAL ALL ROOF PENETRATIONS AIR, WATER, AND WEATHER TIGHT.

DRAWING NOTES: #

- SUPPLY AND INSTALL NEW ROOF TOP UNIT (RTU-1) ACCORDING TO MANUFACTURER'S INSTALLATION INSTRUCTIONS ON ROOF, AS SHOWN. PROVIDE AND INSTALL ISOLATED ROOF CURB, FLEXIBLE DUCT CONNECTIONS AT RTU-1, ASSOCIATED DUCTWORK, DAMPERS, AND DIFFUSERS. ENSURE RTU-1 AND ROOF CURB PLACEMENT DOES NOT IMPEDE RAIN WATER FLOW ON ROOF TO EXISTING ROOF DRAIN. INSTALL RTU-1 MINIMUM 10' FROM PARAPET ADJACENT TO GRIDLINE B.
- RUN SUPPLY DUCTWORK IN CEILING SPACE. PROVIDE NO MORE THEN 6'-0" OF FLEXIBLE DUCTWORK FOR DUCT CONNECTION TO DIFFUSERS. RECTANGULAR SUPPLY DUCTWORK TO HAVE 1" OF ACOUSTIC INSULATION.
- PROVIDE OPEN ENDED 24"x14" RETURN DUCT IN CEILING SPACE C/W 90° SHORT ELBOW WITH TURNING VANES. RETURN DUCTWORK TO HAVE 1" OF ACOUSTIC INSULATION.
- EXISTING TEMPERATURE SENSOR WIRED TO EXISTING VMA1410 CONTROLLER. REPLACE CONTROLLER WITH NEW JOHNSON CONTROLS VMA1420 CONTROLLER TO ALLOW FOR ANALOGUE OUTPUT HEATING CONTROL TO NEW DH-1. PROVIDE CONTROL WIRING FROM RTU-1 AND DH-1 TO EXISTING TEMPERATURE SENSOR AND NEW VMA1420 CONTROLLER AS NECESSARY AND METASYS BAS.
- PROVIDE CONTROL WIRING TO TIE INTO EXISTING CARBON DIOXIDE SENSOR AND METASYS BAS TO PROVIDE DEMAND CONTROLLED VENTILATION VIA RTU-1.
- SELECT DIFFUSER CORE STYLE TO DIRECT AIR TO EAST SIDE OF ROOM.
- EXISTING FLOOR DIFFUSER.
- EXISTING RETURN GRILLE IN CEILING.

LEGEND:

- ACOUSTICALLY LINED DUCTWORK
- FLEXIBLE DUCTWORK
- BALANCE DAMPER
- ROOF TOP UNIT
- GRILLE TYPE
- GRILLE SIZE
- AIR FLOW (CFM)
- EXISTING TEMPERATURE SENSOR
- EXISTING CARBON DIOXIDE SENSOR

NOTES:
 THESE DRAWINGS SHALL NOT BE SCALED.
 THE CONTRACTOR SHALL VISIT THE SITE AND SATISFY HIMSELF ALL DIMENSIONS, DATUM, AND DETAILED INFORMATION SHOWN ARE CORRECT.
 THE CONTRACTOR IS TO REVIEW AND COORDINATE ALL ARCHITECTURAL, MECHANICAL, ELECTRICAL AND STRUCTURAL DRAWINGS FOR ADDITIONAL OPENINGS THROUGH FLOORS, WALLS AND CEILINGS FOR DUCT, PIPE & ELECTRICAL RISERS AND ALL OPENINGS NOT SHOWN ON DRAWINGS.
 ALL OPENINGS THROUGH FIRE ASSEMBLIES ARE TO BE FIRE STOPPED AND SEALED WITH ULC APPROVED FIRE STOPPING TO MAINTAIN THE INTEGRITY OF THE FIRE SEPARATION, AND PROVIDE A SMOKE-TIGHT BARRIER.
 ALL PRODUCTS AND MATERIALS TO BE USED AND INSTALLED SHALL CONFORM WITH MANUFACTURER'S SPECIFICATIONS & APPLICABLE CODES.
 THE CONTRACTOR SHALL BE RESPONSIBLE TO PATCH AND MAKE GOOD ALL EXISTING CONSTRUCTION AFFECTED BY THE REMOVAL OF ALL ITEMS FORMING THE PART OF THE RENOVATION WORK.
 WHERE NEW FLOORING AND BASE IS TO BE INSTALLED IN EXISTING AREAS (REFER TO FLOOR PLAN AND ROOM SCHEDULE) THE EXISTING FLOORING SURFACE AND BASE MUST BE REMOVED, UNLESS OTHERWISE NOTED. ALL FLOOR SURFACES SHALL BE PREPARED IN ACCORDANCE TO MANUFACTURER'S RECOMMENDATIONS FOR INSTALLATION OF NEW FLOOR.
 WHERE PAINTING OF EXISTING WALLS IS INDICATED ON THE ROOM SCHEDULE, THESE WALLS MUST BE CLEANED OF ANY EXISTING WALL COVERING, PATCHED & PREPARED TO ACCEPT NEW MATERIAL, UNLESS OTHERWISE NOTED.

VENTILATION DESIGN INFORMATION - HISTORY ROOM 434

VENTILATION STANDARD		ASHRAE 62.1-2013
RTU-1	TYPE OF OCCUPANCY	LIBRARY
	OCCUPANCY	30 PEOPLE
	AREA	3323 SQ. FT.
	PEOPLE OUTDOOR AIR RATE	5 CFM/PERSON
	AREA OUTDOOR AIR RATE	0.12 CFM/SQ. FT.
MINIMUM REQUIRED OUTDOOR AIR RATE		399 CFM
DESIGN OUTDOOR AIR RATE		549 CFM

0	ISSUED FOR TENDER	DJ	2014
No.	REVISION/DESCRIPTION	BY	DATE

SEAL CONSULTANT:

KGS GROUP
CONSULTING ENGINEERS

DRAWN	TJC	CHECKED	DESIGNED	APPROVED
DATE	2014.06.17	USER	APPROVAL	

THE CITY OF WINNIPEG
 PLANNING, PROPERTY AND
 DEVELOPMENT DEPARTMENT
 MUNICIPAL ACCOMMODATIONS DIVISION
 3-65 GARRY STREET, R3C 4K4

PROJECT
MILLENNIUM LIBRARY

RELOCATION OF HISTORY ROOM
 251 DONALD STREET

SHEET TITLE
MECHANICAL
 PARTIAL FOURTH FLOOR PLAN
 NEW 4th FLOOR AND ROOF HVAC PLAN

SCALE	PROJECT No.	SHEET No.
AS SHOWN	2014-052	M1

FOR TENDER ONLY
 NOT TO BE USED FOR CONSTRUCTION

APEGM
 Certificate of Authorization
 KGS Group
 No. 245