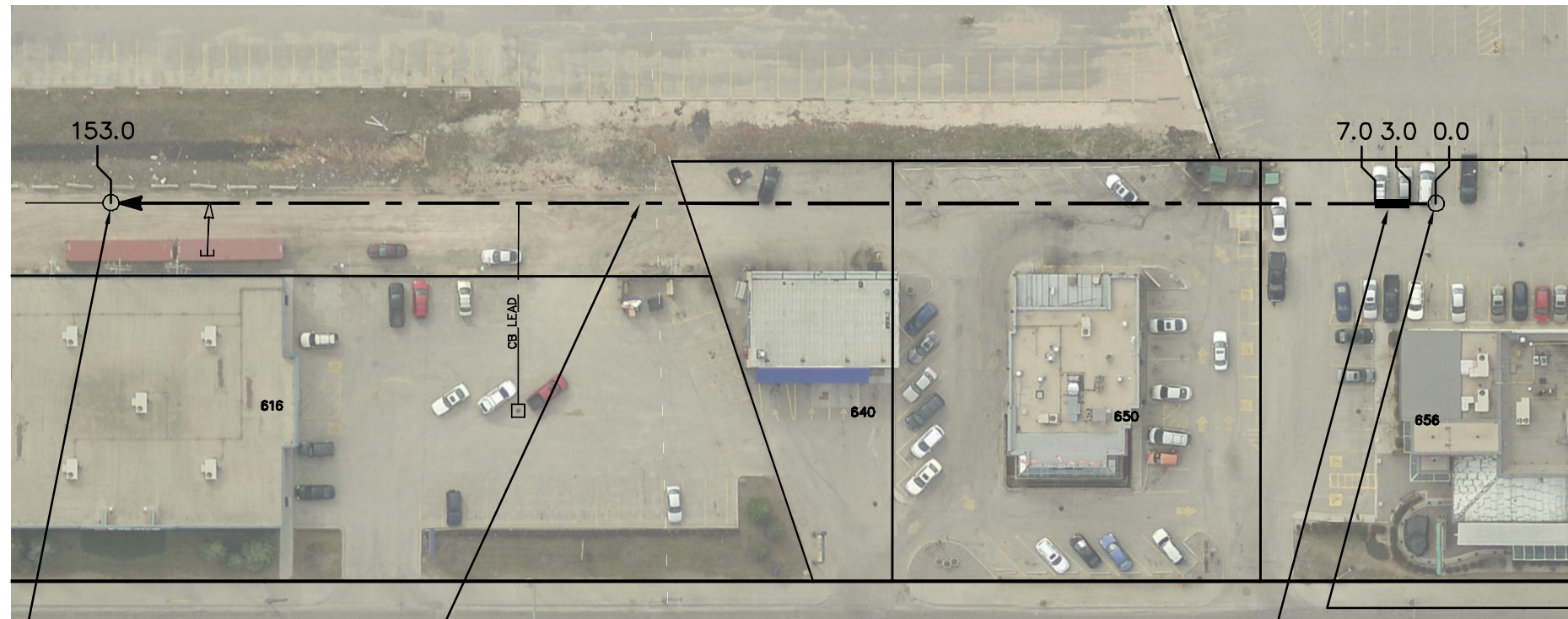
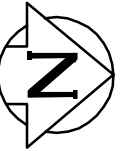


ESTELLA STREET



S-MH20010387
RIM 233.95
INV N 230.73
INV S 230.73

153.00 OF 300 CONC CS
TO BE LINED S-MA20011399
(FULLY DETERIORATED)

ST JAMES ST

SEWER JUNCTION INFORMATION FROM SEWER VIDEO INSPECTION		
SEWER ID S-MA20011399		
DISTANCE FROM MH ID S-MH20009652		
DISTANCE	DIAMETER	CLOCK
11.2	250	1
74.7	300	9
138.5	300	9
140.5	150	10
145.5	150	2

S-MH20009652
RIM 233.96
INV S 230.94

4.00 OF 300 SDR 35 PVC
SEWER REPAIR (SD-022B)
(WORK DONE BY OTHERS)

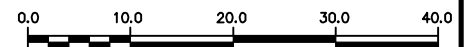
WARNING

IF POWER EQUIPMENT OR EXPLOSIVES
ARE TO BE USED FOR EXCAVATION ON
THIS PROJECT THE CONTRACTOR MUST:

- 1) NOTIFY THE GAS COMPANY OF THE PROPOSED LOCATION OF EXCAVATION.
- 2) TAKE PRECAUTION TO AVOID DAMAGE TO GAS COMPANY INSTALLATIONS.

SEE PROVINCIAL REGULATION 210/72 FOR DETAILS

METRIC
WHOLE NUMBERS INDICATE MILLIMETRES
DECIMALIZED NUMBERS INDICATE METRES



LOCATION APPROVED
UNDERGROUND STRUCTURES

SUPV. U/G STRUCTURES COMMITTEE DATE

NOTE:

LOCATION OF UNDERGROUND STRUCTURES AS SHOWN ARE BASED ON THE BEST INFORMATION AVAILABLE BUT NO GUARANTEE IS GIVEN THAT ALL EXISTING UTILITIES ARE SHOWN OR THAT THE GIVEN LOCATIONS ARE EXACT. CONFIRMATION OF EXISTENCE AND EXACT LOCATION OF ALL SERVICES MUST BE OBTAINED FROM THE INDIVIDUAL UTILITIES BEFORE PROCEEDING WITH CONSTRUCTION.

B.M.
ELEV.

CONSTRUCTION COMPLETION DATE: YYYY MM DD

NO.	REVISIONS	DATE	BY

DESIGNED BY	SC	CHECKED BY	SC
DRAWN BY	MA	APPROVED BY	KZ
SCALE:	1:750	RELEASED FOR CONSTRUCTION	
HORIZONTAL			
VERTICAL			
DATE	2014 10 08	DATE	

PLOT DATE: 2014 10 08

ENGINEER'S SEAL

ORIGINAL
SIGNED BY
S.R.J.
COURNOYER
14-10-07

CONSULTANT DRAWING NUMBER

BID OPPORTUNITY: 946-2014
CONTRACT NUMBER: 12



THE CITY OF WINNIPEG
WATER AND WASTE DEPARTMENT
ENGINEERING DIVISION

2014 SEWER RENEWALS
BY CIPP LINING - CONTRACT 12
ESTELLA STREET
2ND MH N OF PORTAGE AVENUE TO
1ST MH N OF PORTAGE AVENUE

SHEET 21 OF 66

CITY DRAWING NUMBER

10832

FILE PATH: R:\DRAWINGS\SEWER\2014 RENEWALS\EPR AND TPR\Contract 12\
FILE NAME: 10832.dwg