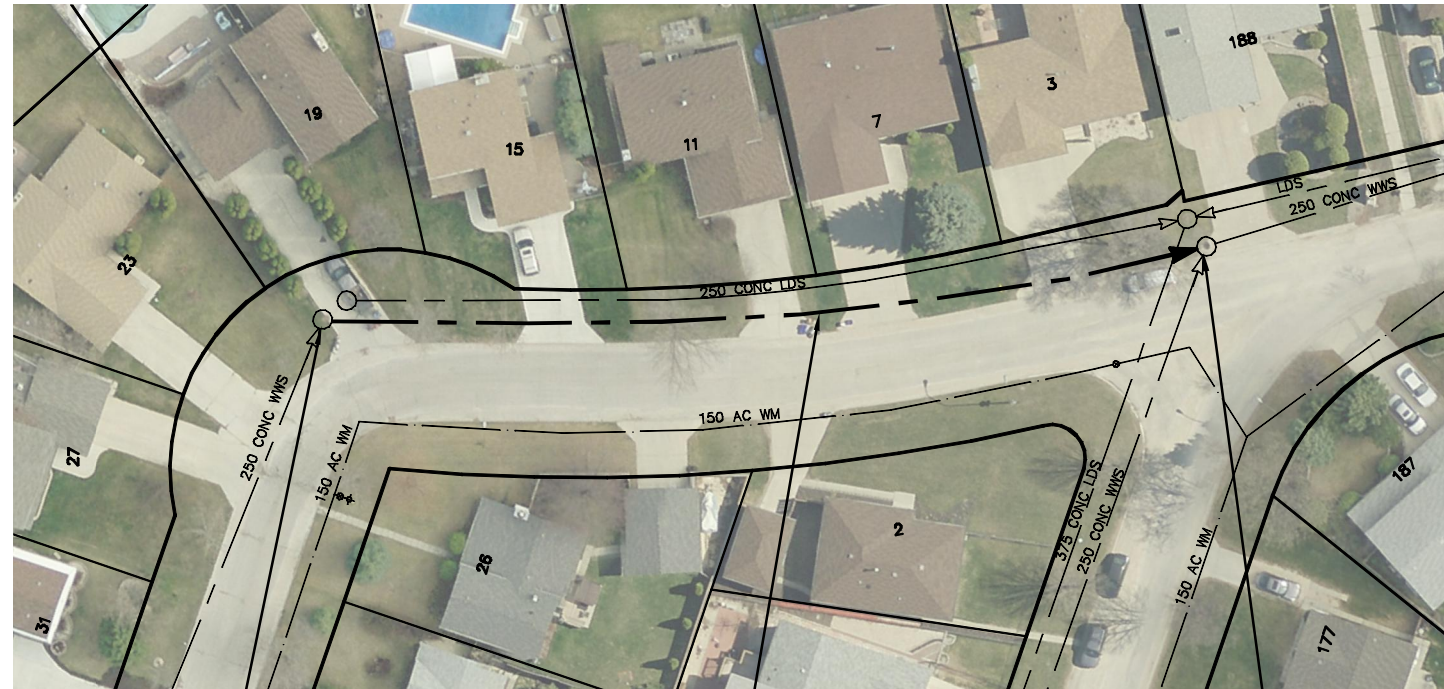
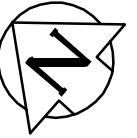


LAKESIDE DRIVE



S-MH60013846
RIM 231.81
INV E 227.67
INV W 227.72

91.50 OF 250 CONC WWS
TO BE LINED S-MA60016077
(PARTIALLY DETERIORATED)

S-MH60013845
RIM 232.03
INV E 226.16
INV W 226.16

SEWER JUNCTION INFORMATION FROM SEWER VIDEO INSPECTION SEWER ID S-MA60016077		
DISTANCE FROM MH ID S-MH60013846		
DISTANCE	DIAMETER	CLOCK
6.9	150	11
23.6	150	11
43.5	150	11
45.1	150	11
63.4	150	11
80.4	150	11
90.9	250	6

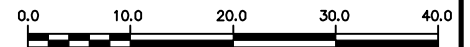
WARNING

IF POWER EQUIPMENT OR EXPLOSIVES ARE TO BE USED FOR EXCAVATION ON THIS PROJECT THE CONTRACTOR MUST:

- 1) NOTIFY THE GAS COMPANY OF THE PROPOSED LOCATION OF EXCAVATION.
- 2) TAKE PRECAUTION TO AVOID DAMAGE TO GAS COMPANY INSTALLATIONS.

SEE PROVINCIAL REGULATION 210/72 FOR DETAILS

METRIC
WHOLE NUMBERS INDICATE MILLIMETRES
DECIMALIZED NUMBERS INDICATE METRES



LOCATION APPROVED
UNDERGROUND STRUCTURES

SUPV. U/G STRUCTURES COMMITTEE DATE

NOTE:
LOCATION OF UNDERGROUND STRUCTURES AS SHOWN ARE BASED ON THE BEST INFORMATION AVAILABLE BUT NO GUARANTEE IS GIVEN THAT ALL EXISTING UTILITIES ARE SHOWN OR THAT THE GIVEN LOCATIONS ARE EXACT. CONFIRMATION OF EXISTENCE AND EXACT LOCATION OF ALL SERVICES MUST BE OBTAINED FROM THE INDIVIDUAL UTILITIES BEFORE PROCEEDING WITH CONSTRUCTION.

B.M. ELEV.			
CONSTRUCTION COMPLETION DATE: YYYY MM DD			
NO.	REVISIONS	DATE	BY

DESIGNED BY	SC	CHECKED BY	SC
DRAWN BY	MA	APPROVED BY	KZ
SCALE:	1:750	RELEASED FOR CONSTRUCTION	
HORIZONTAL			
VERTICAL			
DATE	2014 10 08	DATE	
PLOT DATE:	2014 10 08		

ENGINEER'S SEAL

ORIGINAL
SIGNED BY
S.R.J.
COURNOYER
14-10-07

CONSULTANT DRAWING NUMBER
-



THE CITY OF WINNIPEG
WATER AND WASTE DEPARTMENT
ENGINEERING DIVISION

2014 SEWER RENEWALS
BY CIPP LINING - CONTRACT 12
LAKESIDE DRIVE
1ST MH NW OF AUGUSTA DRIVE TO
MH @ AUGUSTA DRIVE

SHEET 29 OF 66
CITY DRAWING NUMBER

10840