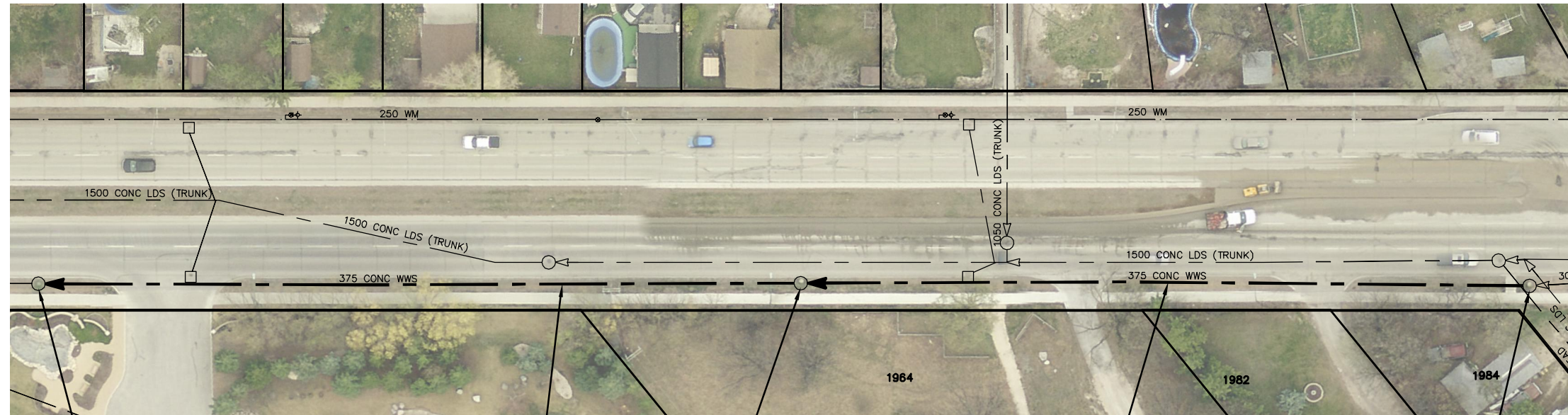


ST MARYS ROAD



NORMAND AV

S-MH50001558
RIM 232.04
INV N 225.42
INV S 225.42

105.00 OF 375 CONC WWS
TO BE LINED S-MA50001768
(PARTIALLY DETERIORATED)

S-MH50001557
RIM 231.88
INV N 225.69
INV S 225.69

100.30 OF 375 CONC WWS
TO BE LINED S-MA50001767
(PARTIALLY DETERIORATED)

S-MH50001556
RIM 231.94
INV N 226.05
INV S 226.05

SEWER JUNCTION INFORMATION FROM SEWER VIDEO INSPECTION		
SEWER ID S-MA50001768		
DISTANCE FROM MH ID S-MH50001557		
DISTANCE	DIAMETER	CLOCK
55.0	150	12

SEWER JUNCTION INFORMATION FROM SEWER VIDEO INSPECTION		
SEWER ID S-MA50001767		
DISTANCE FROM MH ID S-MH50001556		
DISTANCE	DIAMETER	CLOCK
6.4	150	12
35.4	150	11

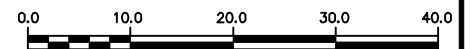
WARNING

IF POWER EQUIPMENT OR EXPLOSIVES ARE TO BE USED FOR EXCAVATION ON THIS PROJECT THE CONTRACTOR MUST:

- 1) NOTIFY THE GAS COMPANY OF THE PROPOSED LOCATION OF EXCAVATION.
- 2) TAKE PRECAUTION TO AVOID DAMAGE TO GAS COMPANY INSTALLATIONS.

SEE PROVINCIAL REGULATION 210/72 FOR DETAILS

METRIC
WHOLE NUMBERS INDICATE MILLIMETRES
DECIMALIZED NUMBERS INDICATE METRES



LOCATION APPROVED
UNDERGROUND STRUCTURES

SUPV. U/G STRUCTURES COMMITTEE DATE

NOTE:
LOCATION OF UNDERGROUND STRUCTURES AS SHOWN ARE BASED ON THE BEST INFORMATION AVAILABLE BUT NO GUARANTEE IS GIVEN THAT ALL EXISTING UTILITIES ARE SHOWN OR THAT THE GIVEN LOCATIONS ARE EXACT. CONFIRMATION OF EXISTENCE AND EXACT LOCATION OF ALL SERVICES MUST BE OBTAINED FROM THE INDIVIDUAL UTILITIES BEFORE PROCEEDING WITH CONSTRUCTION.

B.M. ELEV.			
CONSTRUCTION COMPLETION DATE: YYYY MM DD			
NO.	REVISIONS	DATE	BY

DESIGNED BY	SC	CHECKED BY	SC
DRAWN BY	MA	APPROVED BY	KZ
SCALE:	1:750	RELEASED FOR CONSTRUCTION	
HORIZONTAL			
VERTICAL			
DATE	2014 10 08	DATE	
PLOT DATE:	2014 10 08		

ENGINEER'S SEAL

ORIGINAL
SIGNED BY
S.R.J.
COURNOYER
14-10-07

CONSULTANT DRAWING NUMBER

BID OPPORTUNITY: 946-2014
CONTRACT NUMBER: 12



THE CITY OF WINNIPEG
WATER AND WASTE DEPARTMENT
ENGINEERING DIVISION

2014 SEWER RENEWALS
BY CIPP LINING - CONTRACT 12
ST MARYS ROAD
1ST MH N NORMAND AVENUE TO
3RD MH N NORMAND AVENUE

SHEET 52 OF 66

CITY DRAWING NUMBER

10863

FILE PATH: R:\DRAWINGS\SEWER\2014 RENEWALS\CIPP'S\CONTRACT 12\Drawings\
FILE NAME: 10863.dwg