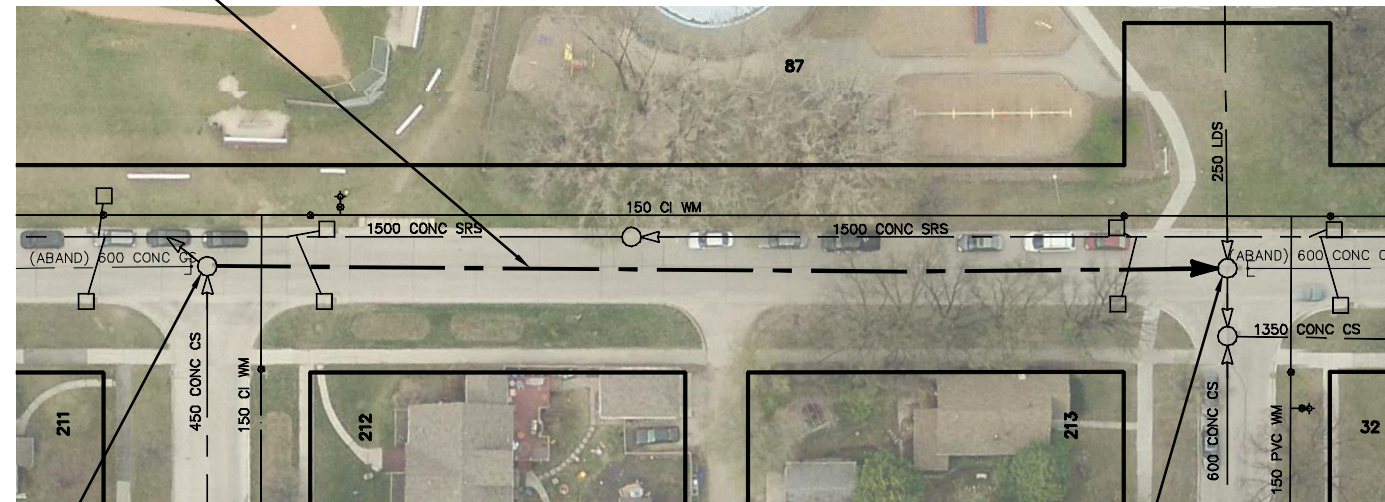




WALMER STREET

99.7 OF 600 CONC CS
TO BE LINED S-MA50003725
(FULLY DETERIORATED)



SEWER JUNCTION INFORMATION FROM SEWER VIDEO INSPECTION		
SEWER ID S-MA50003725		
DISTANCE FROM MH ID S-MH50003205		
DISTANCE	DIAMETER	CLOCK
29.2	150	10
37.5	150	3

S-MH50003205
RIM 228.65
WEIR 224.96
INV E 224.74
INV S 224.74
INV N 224.74

BIRCHDALE AV

S-MH50003212
RIM 228.56
INV N 224.46
INV S 224.55
INV W 225.07

LAWNDALE AV

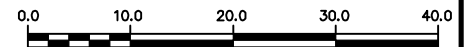
WARNING

IF POWER EQUIPMENT OR EXPLOSIVES
ARE TO BE USED FOR EXCAVATION ON
THIS PROJECT THE CONTRACTOR MUST:

- 1) NOTIFY THE GAS COMPANY OF THE PROPOSED LOCATION OF EXCAVATION.
- 2) TAKE PRECAUTION TO AVOID DAMAGE TO GAS COMPANY INSTALLATIONS.

SEE PROVINCIAL REGULATION 210/72 FOR DETAILS

METRIC
WHOLE NUMBERS INDICATE MILLIMETRES
DECIMALIZED NUMBERS INDICATE METRES



LOCATION APPROVED
UNDERGROUND STRUCTURES

SUPV. U/G STRUCTURES COMMITTEE DATE

NOTE:
LOCATION OF UNDERGROUND STRUCTURES AS SHOWN ARE BASED ON THE BEST INFORMATION AVAILABLE BUT NO GUARANTEE IS GIVEN THAT ALL EXISTING UTILITIES ARE SHOWN OR THAT THE GIVEN LOCATIONS ARE EXACT. CONFIRMATION OF EXISTENCE AND EXACT LOCATION OF ALL SERVICES MUST BE OBTAINED FROM THE INDIVIDUAL UTILITIES BEFORE PROCEEDING WITH CONSTRUCTION.

B.M. ELEV.			
CONSTRUCTION COMPLETION DATE: YYYY MM DD			
NO.	REVISIONS	DATE	BY

DESIGNED BY	SC	CHECKED BY	SC
DRAWN BY	MA	APPROVED BY	KZ
SCALE:	1:750	RELEASED FOR CONSTRUCTION	
HORIZONTAL			
VERTICAL			
DATE	2014 10 09	DATE	
PLOT DATE:	2014 10 09		

ENGINEER'S SEAL

ORIGINAL
SIGNED BY
S.R.J.
COURNOYER
14-10-07

CONSULTANT DRAWING NUMBER
-



THE CITY OF WINNIPEG
WATER AND WASTE DEPARTMENT
ENGINEERING DIVISION

2014 SEWER RENEWALS
BY CIPP LINING - CONTRACT 12
WALMER STREET
MH AT BIRCHDALE AVENUE TO
MH AT LAWNDALE AVENUE (CL)

SHEET 63 OF 66
CITY DRAWING NUMBER

10874