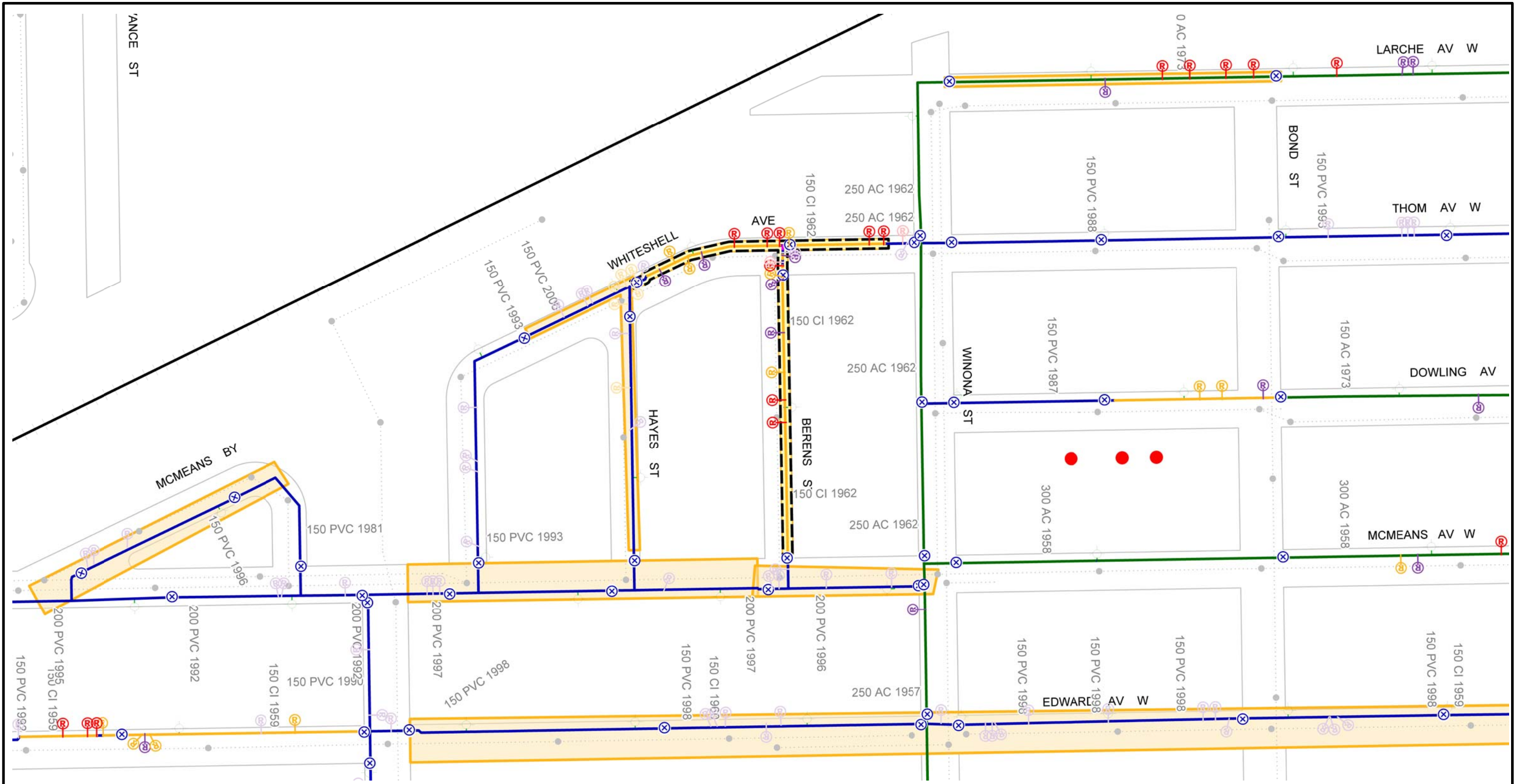


APPENDIX C – WATERMAIN RENEWAL LOCATIONS SKETCHES

Sketches for EDISON AVE., BREWSTER BAY, LACY ST, ENFIELD CR, FONTAINE CR, PILGRIM AVE & ST. ANNES., HARWICK LANE, WHITESHELL AVE & BERENS ST.

O:\Asset Management Branch\Water\WMM Renewal\2015\GEO\MED\IA\2015_WMR.gws



CI WM	REPAIR 5 - 15 YRS - ABANDON	FEEDERMAIN	PROJECTS - 2015
PVC WM	REPAIR > 15 YRS	AQUEDUCT	HISTORICAL PROJECTS
AC WM	REPAIR > 15 YRS - ABANDON	MANHOLE	2015 PWD PROJECT - LOCAL
UNKNOWN MATERIAL	VALVES	SEWERS	2015 PWD PROJECT - REGION
REPAIR < 5 YRS	2014 FROZEN SERVICES	RAILWAY	CATHODIC PROTECTION
REPAIR < 5 YRS - ABANDON	HYDRANT	SCHOOL PARCELS	FIRE PROTECTION UPGRADE
REPAIR 5 - 15 YRS	HYDRANT BRANCH		

Additional Notes:

N

Printed: 9/30/2014

**CITY OF WINNIPEG
WATER AND WASTE DEPARTMENT
2015 WATERMAIN RENEWAL PROGRAM**

Location ID: 30	Street: WHITESHELL AV/BERENS ST
Location Description: HAYES TO WINONA/WHITESHELL TO MCMEANS	
Scale: 1:2000	Renewal Type: REPAIR COUNT



CI WM	REPAIR 5 - 15 YRS - ABANDON	FEEDERMAIN	PROJECTS - 2015
PVC WM	REPAIR > 15 YRS	AQUEDUCT	HISTORICAL PROJECTS
AC WM	REPAIR > 15 YRS - ABANDON	MANHOLE	2015 PWD PROJECT - LOCAL
UNKNOWN MATERIAL	VALVES	SEWERS	2015 PWD PROJECT - REGION
REPAIR < 5 YRS	2014 FROZEN SERVICES	RAILWAY	CATHODIC PROTECTION
REPAIR < 5 YRS - ABANDON	HYDRANT	SCHOOL PARCELS	FIRE PROTECTION UPGRADE
REPAIR 5 - 15 YRS	HYDRANT BRANCH		

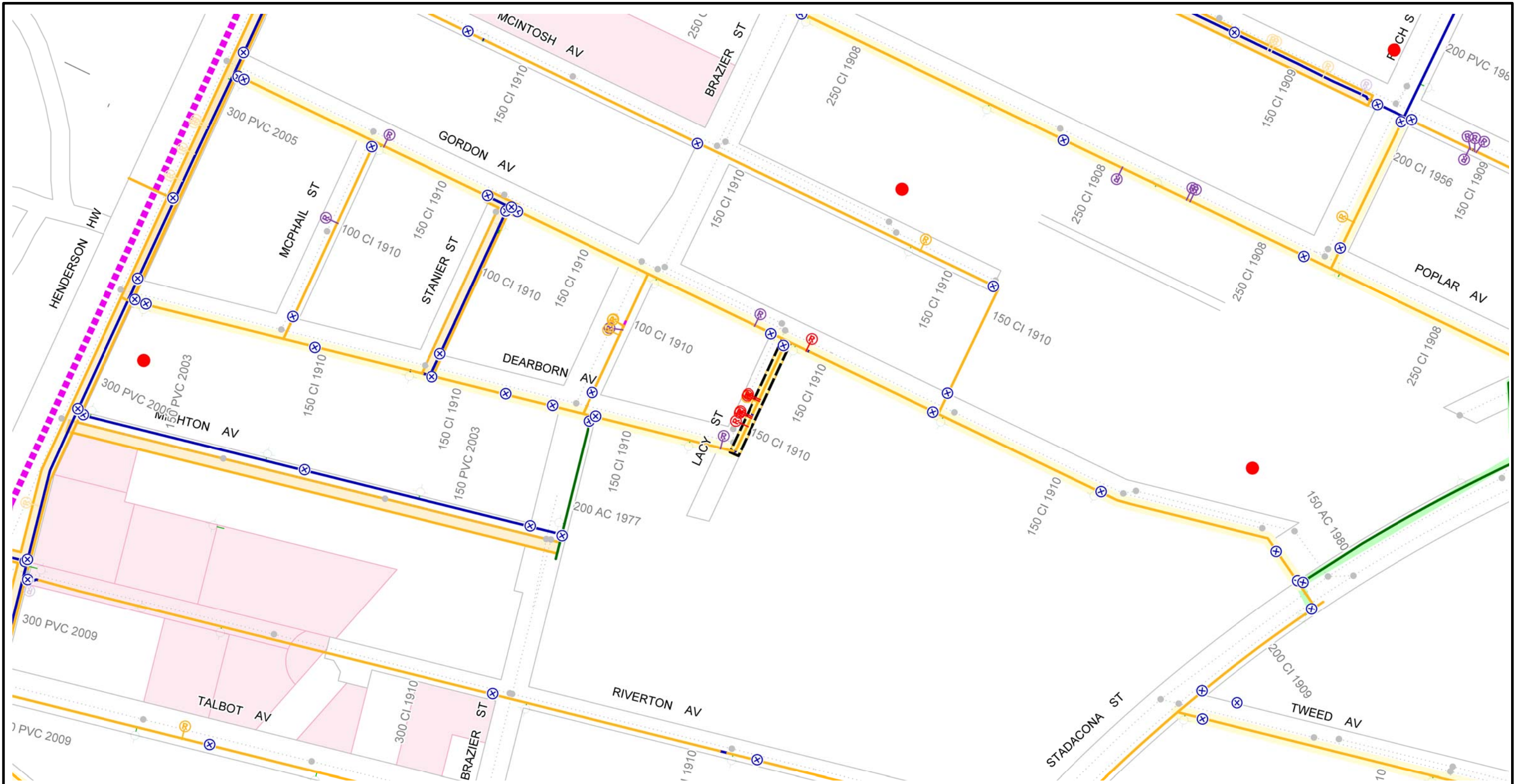
Additional Notes:



Printed: 9/30/2014

**CITY OF WINNIPEG
WATER AND WASTE DEPARTMENT
2015 WATERMAIN RENEWAL PROGRAM**

Location ID: 22	Street: PILGRAM AV/ST ANNES RD
Location Description: PILGRAM FROM ST ANNES TO MID-BLOCK E/ ST ANNES FROM LORAINÉ TO OAKLEIGH	
Scale: 1:2000	Renewal Type: REPAIR COUNT



CI WM	REPAIR 5 - 15 YRS - ABANDON	FEEDERMAIN	PROJECTS - 2015
PVC WM	REPAIR > 15 YRS	AQUEDUCT	HISTORICAL PROJECTS
AC WM	REPAIR > 15 YRS - ABANDON	MANHOLE	2015 PWD PROJECT - LOCAL
UNKNOWN MATERIAL	VALVES	SEWERS	2015 PWD PROJECT - REGION
REPAIR < 5 YRS	2014 FROZEN SERVICES	RAILWAY	CATHODIC PROTECTION
REPAIR < 5 YRS - ABANDON	HYDRANT	SCHOOL PARCELS	FIRE PROTECTION UPGRADE
REPAIR 5 - 15 YRS	HYDRANT BRANCH		

Additional Notes:

N

Printed: 9/30/2014

**CITY OF WINNIPEG
WATER AND WASTE DEPARTMENT
2015 WATERMAIN RENEWAL PROGRAM**

Location ID: 14	Street: LACY ST
Location Description: GORDON AV TO DEARBORN AV	
Scale: 1:2000	Renewal Type: REPAIR COUNT



CI WM	REPAIR 5 - 15 YRS - ABANDON	FEEDERMAIN	PROJECTS - 2015
PVC WM	REPAIR > 15 YRS	AQUEDUCT	HISTORICAL PROJECTS
AC WM	REPAIR > 15 YRS - ABANDON	MANHOLE	2015 PWD PROJECT - LOCAL
UNKNOWN MATERIAL	VALVES	SEWERS	2015 PWD PROJECT - REGION
REPAIR < 5 YRS	2014 FROZEN SERVICES	RAILWAY	CATHODIC PROTECTION
REPAIR < 5 YRS - ABANDON	HYDRANT	SCHOOL PARCELS	FIRE PROTECTION UPGRADE
REPAIR 5 - 15 YRS	HYDRANT BRANCH		

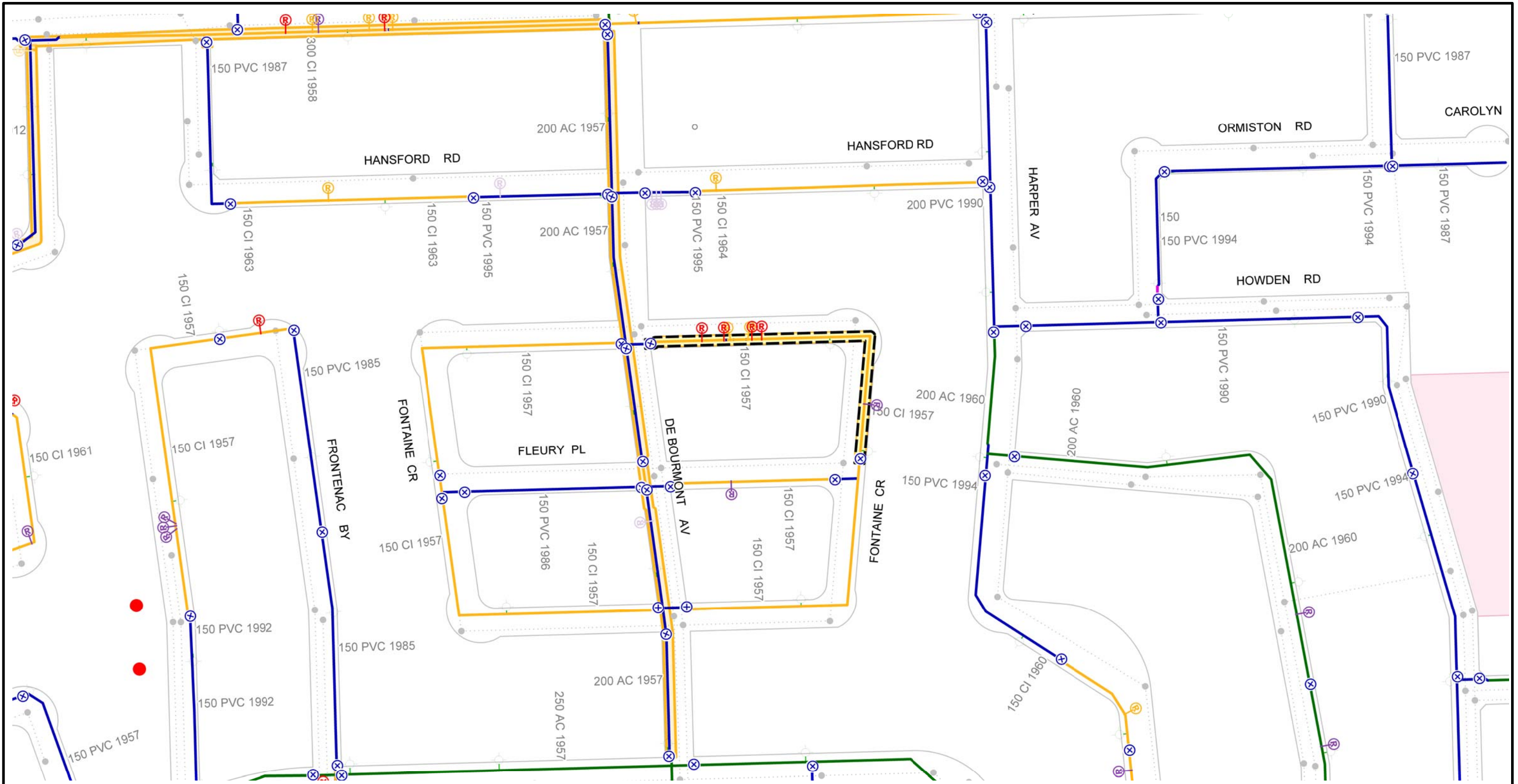
Additional Notes:

N

Printed: 9/30/2014

**CITY OF WINNIPEG
WATER AND WASTE DEPARTMENT
2015 WATERMAIN RENEWAL PROGRAM**

Location ID: 10	Street: HARWICK LN
Location Description: EDMONTON DR TO MID-BLOCK N	
Scale: 1:2000	Renewal Type: REPAIR COUNT



CI WM	REPAIR < 5 YRS	REPAIR > 15 YRS	FEEDERMAIN	PROJECTS - 2015
PVC WM	REPAIR < 5 YRS - ABANDON	REPAIR > 15 YRS - ABANDON	AQUEDUCT	HISTORICAL PROJECTS
AC WM	REPAIR < 5 YRS - ABANDON	HYDRANT	MANHOLE	2015 PWD PROJECT - LOCAL
UNKNOWN MATERIAL	REPAIR < 5 YRS	HYDRANT BRANCH	SEWERS	2015 PWD PROJECT - REGION
REPAIR < 5 YRS	REPAIR < 5 YRS - ABANDON		RAILWAY	CATHODIC PROTECTION
REPAIR < 5 YRS - ABANDON	REPAIR < 5 YRS		SCHOOL PARCELS	FIRE PROTECTION UPGRADE
REPAIR < 5 YRS	REPAIR < 5 YRS			

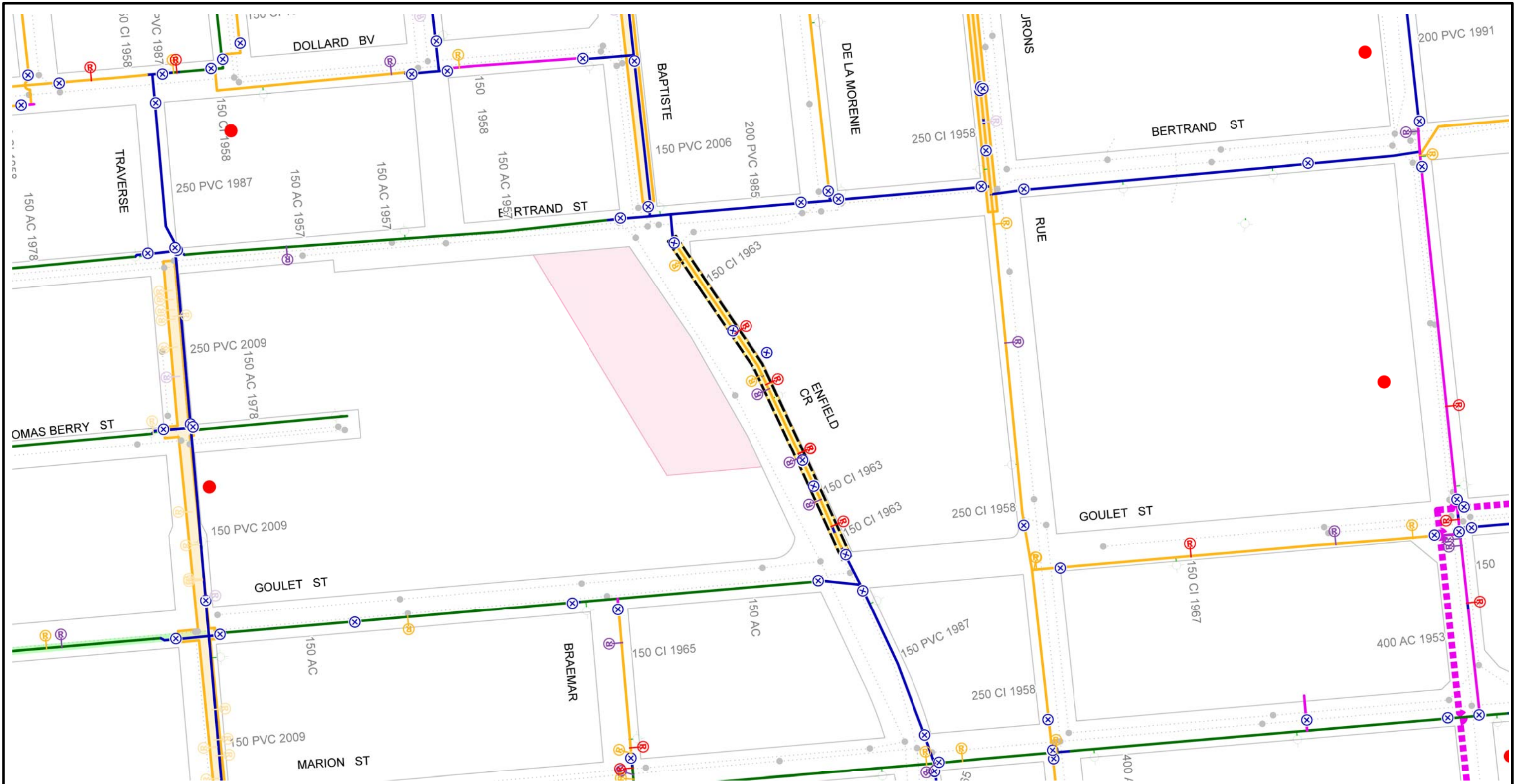
Additional Notes:

N

Printed: 9/30/2014

**CITY OF WINNIPEG
WATER AND WASTE DEPARTMENT
2015 WATERMAIN RENEWAL PROGRAM**

Location ID: 9	Street: FONTAINE CR
Location Description: FLUERY PL TO DE BOURMONT AV	
Scale: 1:2000	Renewal Type: REPAIR COUNT



CI WM	REPAIR 5 - 15 YRS - ABANDON	FEEDERMAIN	PROJECTS - 2015
PVC WM	REPAIR > 15 YRS	AQUEDUCT	HISTORICAL PROJECTS
AC WM	REPAIR > 15 YRS - ABANDON	MANHOLE	2015 PWD PROJECT - LOCAL
UNKNOWN MATERIAL	VALVES	SEWERS	2015 PWD PROJECT - REGION
REPAIR < 5 YRS	2014 FROZEN SERVICES	RAILWAY	CATHODIC PROTECTION
REPAIR < 5 YRS - ABANDON	HYDRANT	SCHOOL PARCELS	FIRE PROTECTION UPGRADE
REPAIR 5 - 15 YRS	HYDRANT BRANCH		

Additional Notes:

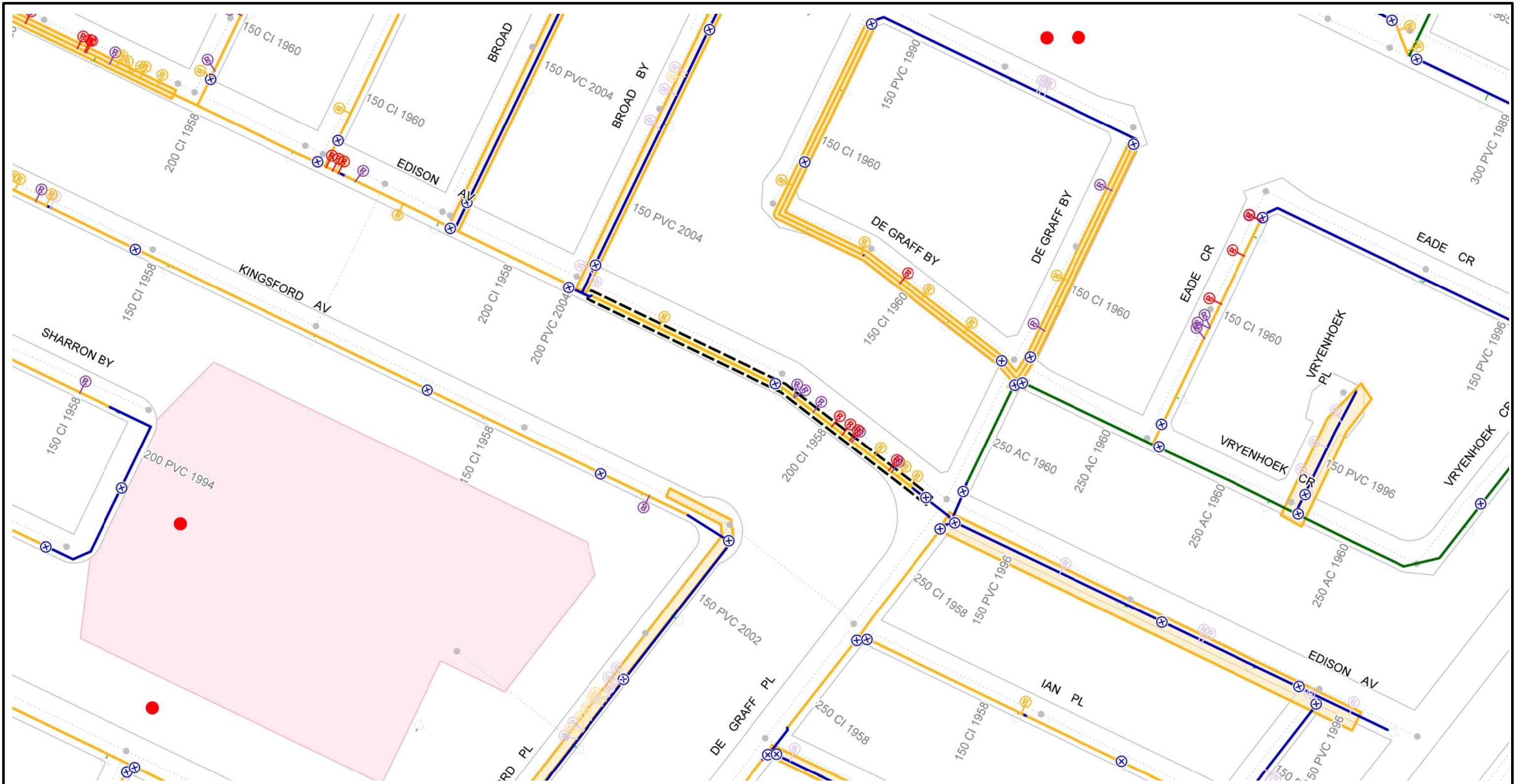


Printed: 9/30/2014



CITY OF WINNIPEG WATER AND WASTE DEPARTMENT 2015 WATERMAIN RENEWAL PROGRAM

Location ID: 8	Street: ENFIELD CR
Location Description: BERTRAND ST TO GOULET ST	
Scale: 1:2000	Renewal Type: REPAIR COUNT




CI WM	REPAIR 5 - 15 YRS - ABANDON	FEEDERMAIN	PROJECTS - 2015
PVC WM	REPAIR > 15 YRS	AQUEDUCT	HISTORICAL PROJECTS
AC WM	REPAIR > 15 YRS - ABANDON	MANHOLE	2015 PWD PROJECT - LOCAL
UNKNOWN MATERIAL	VALVES	SEWERS	2015 PWD PROJECT - REGION
REPAIR < 5 YRS	2014 FROZEN SERVICES	RAILWAY	CATHODIC PROTECTION
REPAIR < 5 YRS - ABANDON	HYDRANT	SCHOOL PARCELS	FIRE PROTECTION UPGRADE
REPAIR 5 - 15 YRS	HYDRANT BRANCH		

Additional Notes:

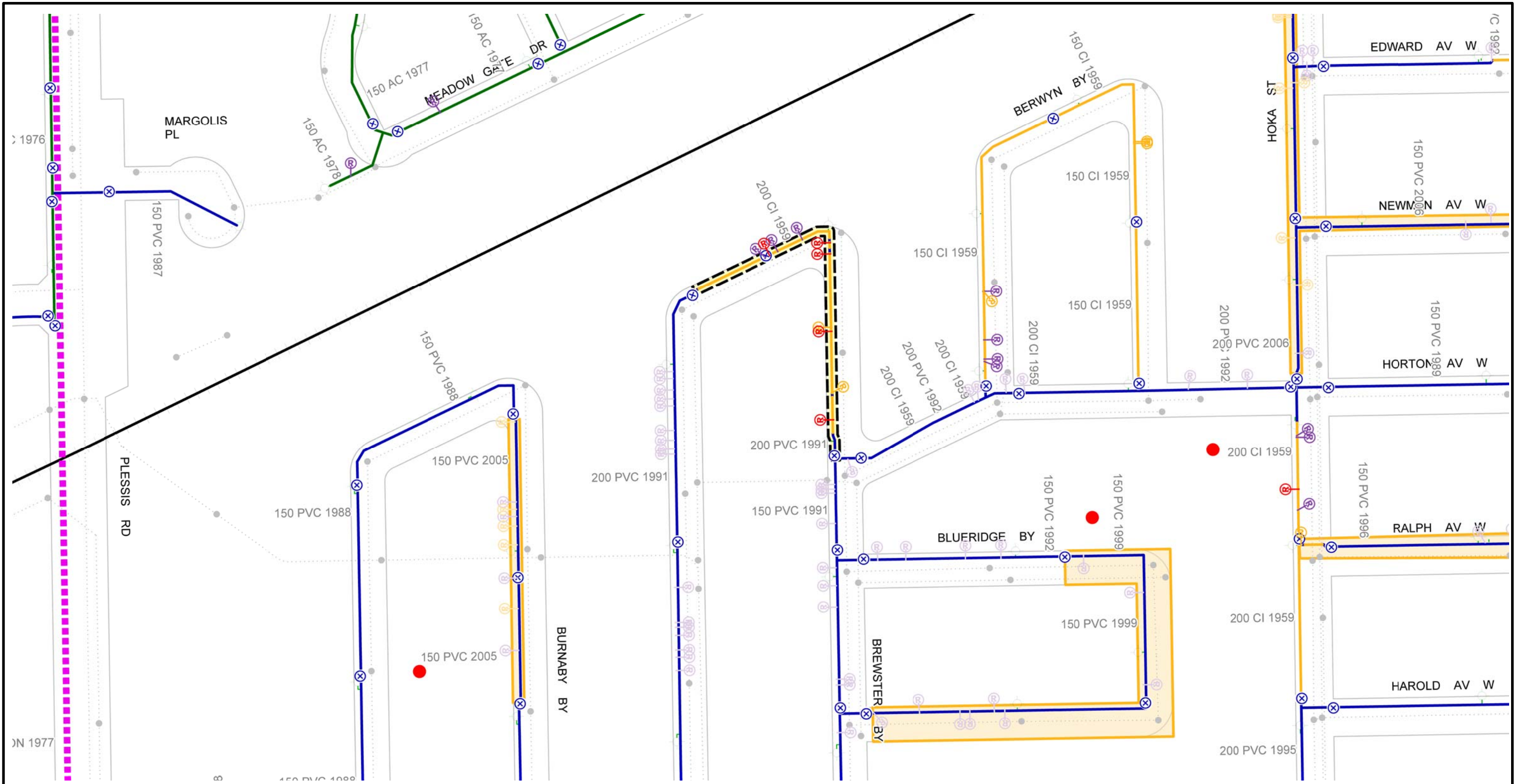


Printed: 9/29/2014



CITY OF WINNIPEG WATER AND WASTE DEPARTMENT 2015 WATERMAIN RENEWAL PROGRAM

Location ID: 7	Street: EDISON AV
Location Description: DE GRAFF PL TO MID-BLOCK W	
Scale: 1:2000	Renewal Type: REPAIR COUNT




CI WM	REPAIR 5 - 15 YRS - ABANDON	FEEDERMAIN	PROJECTS - 2015
PVC WM	REPAIR > 15 YRS	AQUEDUCT	HISTORICAL PROJECTS
AC WM	REPAIR > 15 YRS - ABANDON	MANHOLE	2015 PWD PROJECT - LOCAL
UNKNOWN MATERIAL	VALVES	SEWERS	2015 PWD PROJECT - REGION
REPAIR < 5 YRS	2014 FROZEN SERVICES	RAILWAY	CATHODIC PROTECTION
REPAIR < 5 YRS - ABANDON	HYDRANT	SCHOOL PARCELS	FIRE PROTECTION UPGRADE
REPAIR 5 - 15 YRS	HYDRANT BRANCH		

Additional Notes:



Printed: 9/29/2014



CITY OF WINNIPEG WATER AND WASTE DEPARTMENT 2015 WATERMAIN RENEWAL PROGRAM

Location ID: 3	Street: BREWSTER BY
Location Description: 33 BREWSTER BY TO HORTON AV	
Scale: 1:2000	Renewal Type: REPAIR COUNT