

FILE NAME: 14-0107-021\_B21.dwg  
 DATE: 2014.10.27  
 SHEET TITLE: SCHEDULES  
 PROJECT No: 2013-173  
 ADDRESS: 381 SHERBROOK STREET

DOOR SCHEDULE												
DOOR NO.	DOOR	ELEV.	MATL.	CORE	FINISH	REMARKS	FRAME			FIRE RATING (HOURS)	DOOR HARDWARE SET	
							SECT.	MATL.	FINISH			
D-801	3'-0" x 7'-0" x 1 3/4"	1	STL	KHC	P	TO MATCH EXIST.	A	STL	P	TO MATCH EXIST.	34	01
D-804	±2'-5" x ±7'-0" x 1 3/4" (SITE CONFIRM)	1	STL	KHC	P	TO MATCH EXIST.	B	STL	P	TO MATCH EXIST.	34	02
D-805	±2'-11" x ±6'-0" x 1 3/4" (SITE CONFIRM)	1	STL	KHC	P	TO MATCH EXIST.	C	STL	P	TO MATCH EXIST.	34	03
D-806	±3'-0" x ±6'-0" x 1 3/4" (SITE CONFIRM)	2	STL	KHC	P	TO MATCH EXIST.	D	STL	P	TO MATCH EXIST.	-	04
D-112A	±4'-10" x ±3'-0" (SITE CONFIRM) ROLL-UP SHUTTER	3	STL	-	PF	TO MATCH EXIST.	-	STL	PF	TO MATCH EXIST.	-	05
D-112B	±4'-10" x ±3'-0" (SITE CONFIRM) ROLL-UP SHUTTER	3	STL	-	PF	TO MATCH EXIST.	-	STL	PF	TO MATCH EXIST.	-	05
D-114	±2'-10" x ±7'-0" x 1 3/4" (SITE CONFIRM)	1	STL	KHC	P	TO MATCH EXIST.	E	STL	P	TO MATCH EXIST.	34	06
D-120	3'-0" x 7'-0" x 1 3/4"	1	STL	KHC	P	ENLARGE EXIST. DOOR OPENG	E	STL	P	TO MATCH EXIST.	-	07
D-121	3'-0" x 7'-0" x 1 3/4"	1	STL	KHC	P	ENLARGE EXIST. DOOR OPENG	E	STL	P	TO MATCH EXIST.	-	07
D-202	±3'-0" x ±7'-0" x 1 3/4" (SITE CONFIRM)	1	STL	KHC	P	TO MATCH EXIST.	B	STL	P	TO MATCH EXIST.	34	08
D-209	±2'-10" x ±7'-0" x 1 3/4" (SITE CONFIRM)	1	STL	KHC	P	TO MATCH EXIST.	E	STL	P	TO MATCH EXIST.	34	08
D-R01	±3'-0" x ±7'-0" x 1 3/4" (SITE CONFIRM)	1	STL	INSUL	P	TO MATCH EXIST.	F	STL	P	TO MATCH EXIST.	-	09

**DOOR HARDWARE:**

1. ALL DOOR HARDWARE AS SPECIFIED OR APPROVED EQUAL IN ACCORDANCE WITH B7.

**DOOR HARDWARE SCHEDULE:**

HARDWARE SET No. 01			
3 EA.	HINGE	58B1 4.5 X 4	652
1 EA.	FIRE EXIT HARDWARE	F-25-R-NL	630
1 EA.	SURFACE CLOSER	SC71 HDPA	689
1 EA.	KICK PLATE	4040P EDA	689
1 EA.	WALL STOP	WS406/407C/VX	360
1 SET	SMOKE SEAL	W-21	BLK

HARDWARE SET No. 02			
3 EA.	HINGE	58B1 4.5 X 4	630
1 EA.	STOREROOM LOCK	WS81P8 DANE	626
1 EA.	SURFACE CLOSER	SC71 REG	689
1 EA.	KICK PLATE	8400 10" x 1 1/2" LW BAE	360
1 EA.	WALL STOP	WS406/407C/VX	360
1 SET	SMOKE SEAL	W-21	BLK

HARDWARE SET No. 03			
3 EA.	HINGE	58B1 4.5 X 4	652
1 EA.	FIRE EXIT HARDWARE	F-25-R-TP-BE	630
1 EA.	OH STOP	410S	630
1 EA.	SURFACE CLOSER	SC71 HDPA	689
1 EA.	KICK PLATE	8400 10" x 1 1/2" LW BAE	630
1 SET	SMOKE SEAL	W-21	BLK

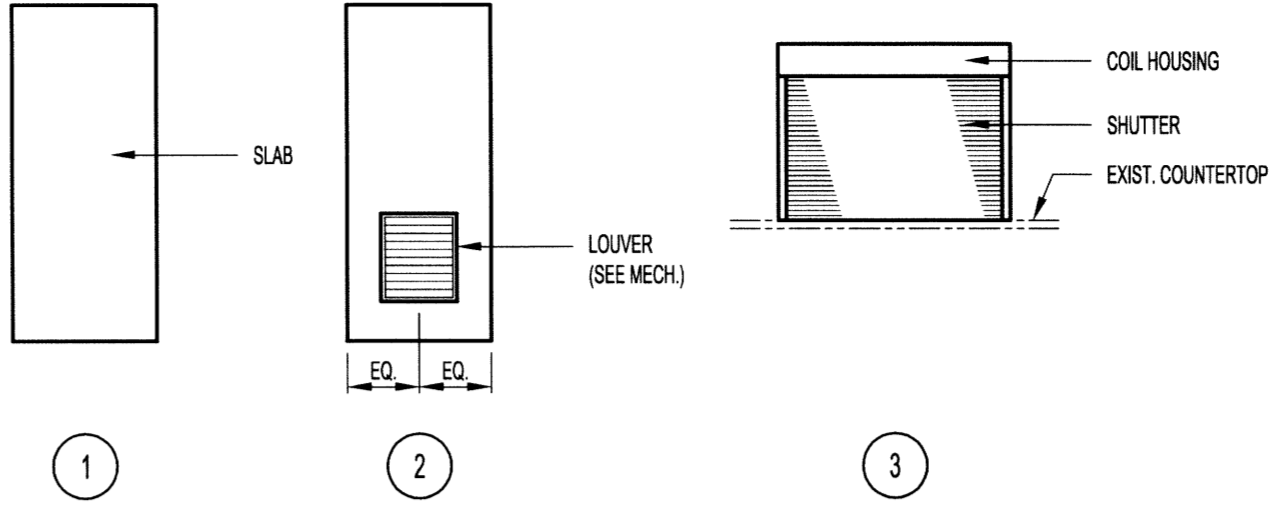
HARDWARE SET No. 04			
3 EA.	HINGE	58B1 4.5 X 4	652
1 EA.	CLASSROOM LOCK	WS81P8 DANE	626
1 EA.	SURFACE CLOSER	SC81 HDPA	689
1 EA.	KICK PLATE	8400 10" x 1 1/2" LW BAE	630
1 EA.	WALL STOP	WS406/407C/VX	630
1 SET	SMOKE SEAL	W-21	BLK

HARDWARE SET No. 05  
 ALL HARDWARE BY MANUFACTURER

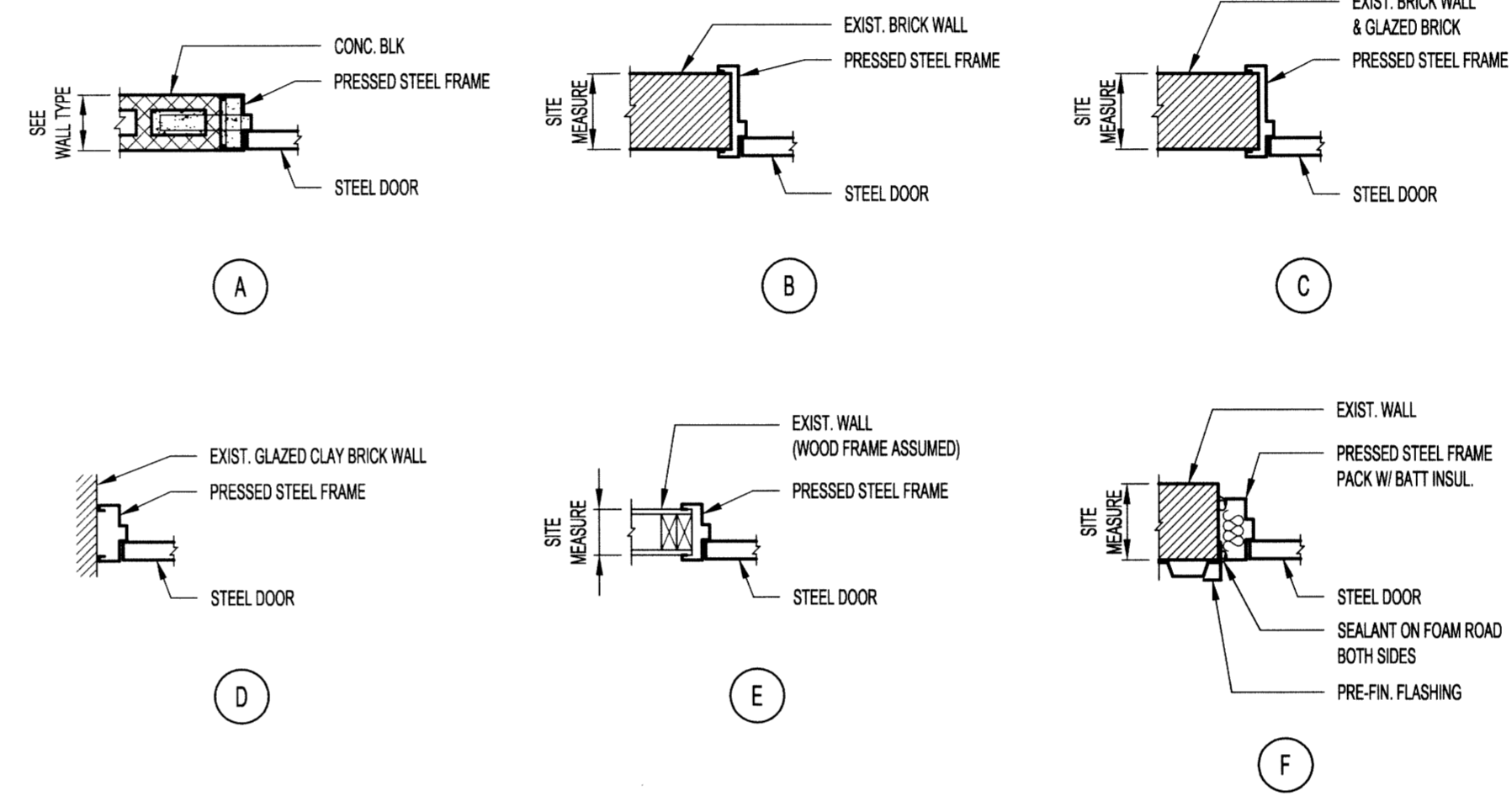
HARDWARE SET No. 06			
3 EA.	HINGE	58B1 4.5 X 4	652
1 EA.	ENTRY/OFFICE LOCK	WS11P8 DANE	626
1 EA.	OH STOP	410S	630
1 EA.	SURFACE CLOSER	SC71 HDPA	689
1 EA.	KICK PLATE	8400 10" x 1 1/2" LW BAE	630
1 SET	SMOKE SEAL	W-21	BLK

HARDWARE SET No. 07			
3 EA.	HINGE	58B1 4.5 X 4	630
1 EA.	PRIVACY LOCK	WS31S DANE	626
1 EA.	ELECTRIC STRIKE	6211-FSE-24VDC	630
1 EA.	INTERFACE BOX	JB7	GRAY
1 EA.	MORTAR GUARD	TAC-LD1-ES	
1 EA.	AUTO OPERATOR	9131 REG	689
2 EA.	ACTUATOR	8310-836T 36"	630
1 EA.	KICK PLATE	8400 10" x 1 1/2" LW BAE	630
1 EA.	OH STOP	410S	630
1 EA.	PUSH TO LOCK BUTTON	CM-400B	630
1 EA.	LED ANNUNCIATOR	CM-AF500	630
1 EA.	WASHROOM RELAY	EMF-2	
1 EA.	DOOR CONTACT	679-05HM	BLK
1 EA.	MORTAR GUARD	TAC-LD1-DC	

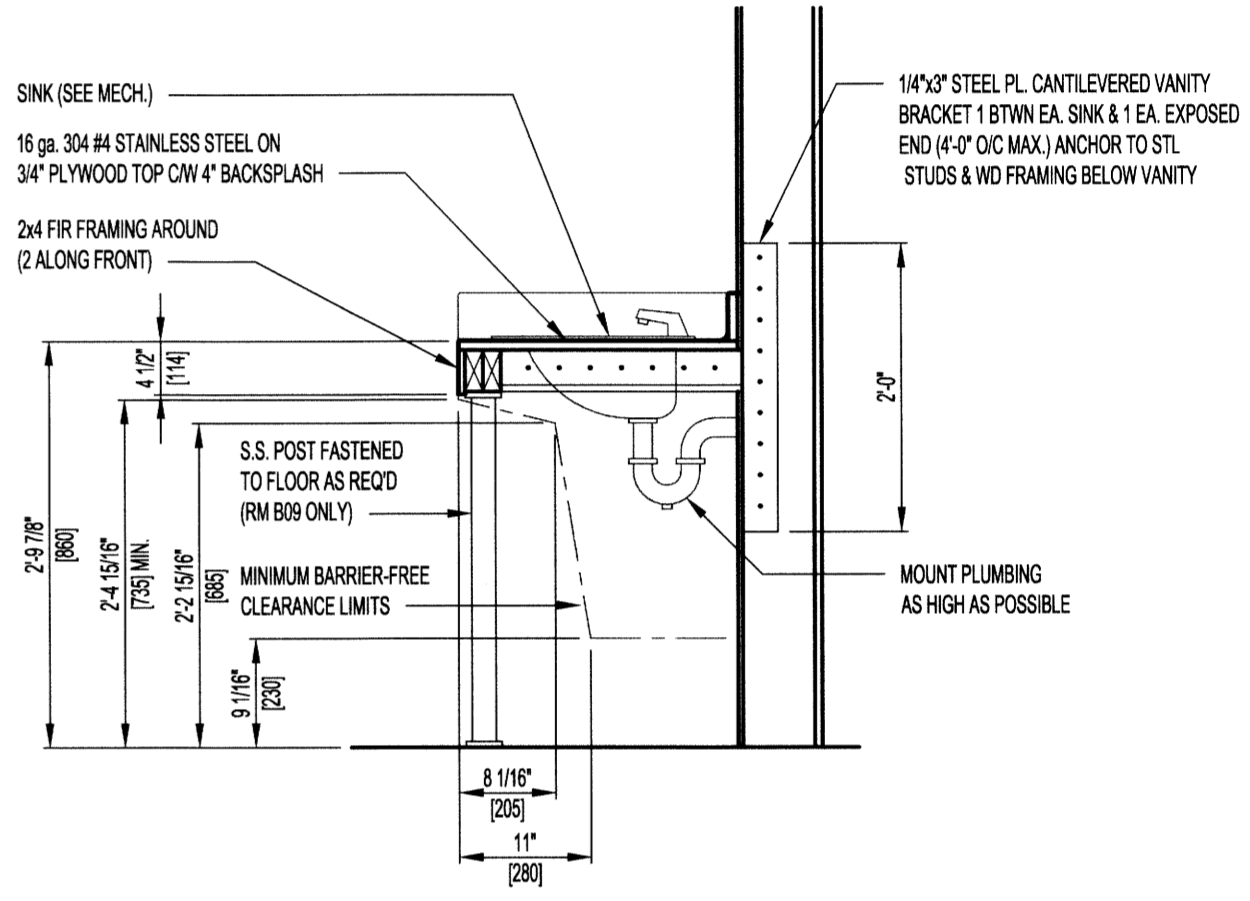
HARDWARE SET No. 08			
3 EA.	HINGE	58B1 4.5 X 4	652
1 EA.	FIRE EXIT HARDWARE	F-25-R-TP-BE	630
1 EA.	SURFACE CLOSER	SC81 HDPA	689
1 EA.	KICK PLATE	8400 10" x 1 1/2" LW BAE	630
1 EA.	WALL STOP	WS406/407C/VX	630
1 SET	SMOKE SEAL	W-21	BLK



**DOOR ELEVATIONS**  
 SCALE: 1/4"=1'-0"



**FRAME SECTIONS**  
 SCALE: 3/4"=1'-0"



**TYPICAL VANITY SECTION**  
 SCALE: 3/4"=1'-0"

FINISH SCHEDULE			
No. / ITEM	DESCRIPTION	COLOUR	REMARKS
<b>PAINT</b>			
PT1	WALLS	TBD	ROOM 108
PT2	CEILING	TBD	ROOM 108
PT3	MENS SHOWER ROOM CEILING	MATCH EXIST.	
PT4	PERSONNEL DOORS	MATCH EXIST.	
PT5	STEEL GUARDRAIL	TBD	
PT6	MEZZANINE WASHROOM	MATCH EXIST.	
PT7	SLOPED CONCRETE FLOOR	TBD	
<b>FLOOR FINISH</b>			
EP1	STONTEC EFC	GLACIER PEAK	MENS SHOWER AREA
EP2	STONTEC EFC	GLACIER PEAK	WOMENS SHOWER AREA
<b>WALL FINISH</b>			
WP1	PVC WALL PANELS	WHITE	ROOMS 808, 809 & 818
<b>MISCELLANEOUS</b>			
TP1	SOLID PLASTIC TOILET PARTITIONS	TBD	ROOM 818
SP1	SECURITY SHUTTER	WHITE	ROOM 112
<b>BLEACHERS</b>			
BS1	STEEL FRAMING	GALVANIZED	
BS2	WILLTEC	WHITE	
<b>EXIT STAIRS</b>			
ES1	STEEL FRAMING	GALVANIZED	

**FINISHES:**  
 1. ALL FINISHES AS SPECIFIED OR APPROVED EQUAL IN ACCORDANCE WITH B7.

WASHROOM HARDWARE AND ACCESSORIES					ROOM					
DESCRIPTION	SUPPLIER / MANUFACTURER	MODEL NO.	MOUNTING HEIGHT	QUANTITY						
				808	809	818	819	121	208	
PAPER TOWEL DISPENSER	N.I.C.				1	1	1	1	1	1
LIQUID SOAP DISPENSER	N.I.C.				1	1	1	1	1	1
TOILET TISSUE DISPENSER	N.I.C.					3				1
ELECTRIC AIR DRYER CW SWIVEL OUTLET	WORLD DRYER	XA	5'-0" A.F.F.		2	2	2		1	1
MIRROR (18" W x 36" H)	BOBRICK	B-165 1836	3'-6" A.F.F.					2		
MIRROR (24" W x 36" H)	BOBRICK	B-165 2436	3'-6" A.F.F.		2	4				1
FIXED TILT MIRROR (24" W x 36" H)	BOBRICK	B283 2436	2'-9 1/4" A.F.F.						1	1
LOCKER ROOM BENCH (36" LONG, FIXED TO FLOOR)	SHANAHANS	LR8-85-S-36	FASTEN TO FLOOR		2	4				
COAT HOOK	FROST	1150	5'-0" A.F.F.		2	4				
SHOWER CURTAIN C/W HOOKS	SHANAHANS	F1144-503 & F1145-72SS			2	4			1	1
SIS SHELF	BOBRICK	B288-24	3'-4" A.F.F.		2					

**WASHROOM HARDWARE AND ACCESSORIES NOTES:**  
 1. ALL WASHROOM HARDWARE AND ACCESSORIES LISTED ABOVE SHALL BE CORROSION PROOF AND AS SPECIFIED OR APPROVED EQUAL IN ACCORDANCE WITH B7.  
 2. MOUNTING HEIGHT TO SUIT BARRIER-FREE INSTALLATION IN ROOMS 120 & 121. MOUNTING HEIGHTS INDICATED ARE FROM BOTTOM OF ITEM.

0	ISSUED FOR CONSTRUCTION		15.02.17
No.	REVISION/DESCRIPTION	BY	DATE



DATE	2014.10.27	CHECKED	DESIGNED	APPROVED
		USER APPROVAL		

THE CITY OF WINNIPEG  
 PLANNING, PROPERTY AND  
 DEVELOPMENT DEPARTMENT  
 MUNICIPAL ACCOMMODATIONS DIVISION  
 3-65 GARRY STREET, R3C 4K4

PROJECT  
**SHERBROOK POOL**  
 REFURBISHMENT OF SHERBROOK POOL

381 SHERBROOK STREET  
 SHEET TITLE

**BUILDING SCHEDULES**

SCALE	PROJECT No:	SHEET No:
AS SHOWN	2013-173	B21

