

MAIN FLOOR PLAN - PLUMBING DEMOLITION
SCALE: 1/8"=1'-0"

GENERAL NOTES:

- CONFORM TO CANADIAN PLUMBING CODE AND ALL LOCAL CODES AND AUTHORITY HAVING JURISDICTION.
- EQUIPMENT LOCATIONS AND PIPE ROUTING INDICATED ON THE DRAWINGS IS APPROXIMATE ONLY. CONFIRM IN THE FIELD. REROUTE PIPING AS REQUIRED TO ELIMINATE FIELD INTERFERENCES, WITH BUILDING STRUCTURES, ELECTRICAL, ETC. CONFIRM CHANGES WITH CONTRACT ADMINISTRATOR. CO-ORDINATE WORK WITH ALL SUBTRADES. WHERE DIMENSIONS ARE INDICATED FOR PIPING EQUIPMENT SIZES, ETC. THESE ARE FOR BIDDING PURPOSES ONLY. THE CONTRACTOR IS RESPONSIBLE TO VERIFY ALL DIMENSIONS IN THE FIELD PRIOR TO ORDERING EQUIPMENT AND COMMENCING INSTALLATION WITHOUT EXTRA CHARGES TO THE PROJECT. THE CONTRACTOR IS RESPONSIBLE TO ENSURE ALL EQUIPMENT, DUCTWORK AND PIPING FITS IN THE SPACE AVAILABLE AND TO MAINTAIN THE GENERAL DESIGN INTENT FOR THE SYSTEMS.
- ALL REMOVED MATERIAL SHALL BE DISPOSED OF OFF SITE.
- ALL PIPING THAT IS BEING SUPPORTED BY THE POOL DECK TO BE REMOVED TO FACILITATE THE REPLACEMENT OF THE DECK.

KEYNOTES:

- REMOVE EXISTING PLUMBING FIXTURES, AND ASSOCIATED WATER AND DRAIN LINES. (TYP.)
- REMOVE EXISTING GUTTER DRAIN PIPING UP TO TIE-IN POINT 8. EXISTING GUTTER DRAINS TO REMAIN. (SEE SECTION B-B).
- REMOVE EXISTING POOL WATER SUPPLY PIPING UP TO TIE-IN POINT 6. EXISTING POOL WATER SUPPLY NOZZLES TO REMAIN. (SEE SECTION A-A)
- REMOVE EXISTING DECK DRAINS AND ASSOCIATED PIPING.
- REMOVE DECK DRAINAGE RISER DOWN TO BASEMENT SLAB LEVEL.
- TEMPORARILY REMOVE EYEWASH STATION TO FACILITATE DECK REMOVAL. RE-INSTALL AFTER COMPLETION OF NEW DECK.
- TEMPORARILY REMOVE EXISTING DRINKING FOUNTAIN TO FACILITATE DECK REMOVAL. RE-INSTALL AFTER COMPLETION OF NEW DECK.
- REMOVE EXISTING TANK AND ASSOCIATED PIPING.
- REMOVE EXISTING HOSE BIBB, MIXING VALVE, AND WATER SUPPLY LINES DOWN TO BASEMENT. (TYP.)
- REMOVE EXISTING DRAIN FROM DOUBLE SINK TO BASEMENT.
- REMOVE EXISTING HOSE BIBBS LOCATED ON WALL.
- REMOVE EXISTING VACUUM LINES TO TIE-IN POINT 7. (SEE SECTION C-C)
- REMOVE EXISTING DRAIN LINES.

NOTES:

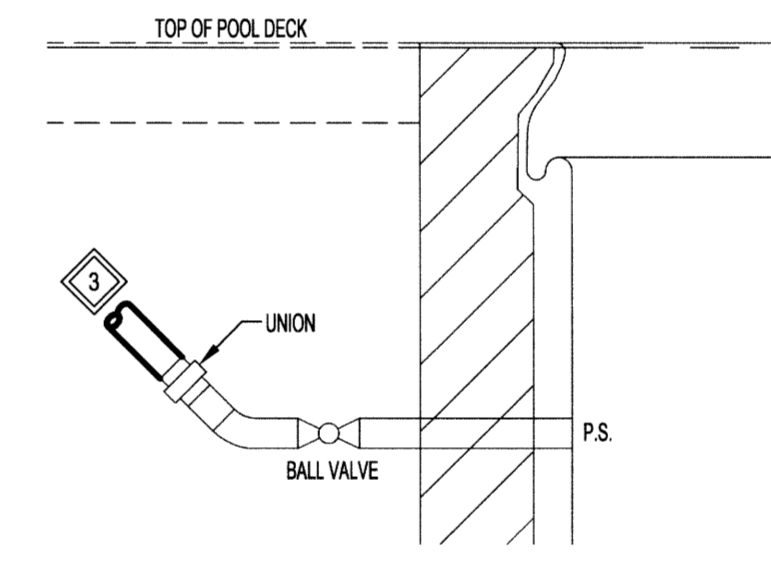
THESE DRAWINGS SHALL NOT BE SCALED.
THE CONTRACTOR SHALL VISIT THE SITE AND SATISFY HIMSELF ALL DIMENSIONS, DATUM, AND DETAILED INFORMATION SHOWN ARE CORRECT.
THE CONTRACTOR IS TO REVIEW AND COORDINATE ALL ARCHITECTURAL, MECHANICAL, ELECTRICAL AND STRUCTURAL DRAWINGS FOR ADDITIONAL OPENINGS THROUGH FLOORS, WALLS, AND CEILINGS FOR DUCT, PIPE & ELECTRICAL RISERS AND ALL OPENINGS NOT SHOWN ON DRAWINGS.
ALL OPENINGS THROUGH FIRE ASSEMBLIES ARE TO BE FIRE STOPPED AND SEALED WITH ULC APPROVED FIRE STOPPING TO MAINTAIN THE INTEGRITY OF THE FIRE SEPARATION, AND PROVIDE A SMOKE-TIGHT BARRIER.
ALL PRODUCTS AND MATERIALS TO BE USED AND INSTALLED SHALL CONFORM WITH MANUFACTURER'S SPECIFICATIONS & APPLICABLE CODES.
THE CONTRACTOR SHALL BE RESPONSIBLE TO PATCH AND MAKE GOOD ALL EXISTING CONSTRUCTION AFFECTED BY THE REMOVAL OF ALL ITEMS FORMING THE PART OF THE RENOVATION WORK.
WHERE NEW FLOORING AND BASE IS TO BE INSTALLED IN EXISTING AREAS (REFER TO FLOOR PLAN AND ROOM SCHEDULE) THE EXISTING FLOORING SURFACE AND BASE MUST BE REMOVED, UNLESS OTHERWISE NOTED. ALL FLOOR SURFACES SHALL BE PREPARED IN ACCORDANCE TO MANUFACTURER'S RECOMMENDATIONS FOR INSTALLATION OF NEW FLOOR.
WHERE PAINTING OF EXISTING WALLS IS INDICATED ON THE ROOM SCHEDULE, THESE WALLS MUST BE CLEANED OF ANY EXISTING WALL COVERING, PATCHED & PREPARED TO ACCEPT NEW MATERIAL, UNLESS OTHERWISE NOTED.

LEGEND:

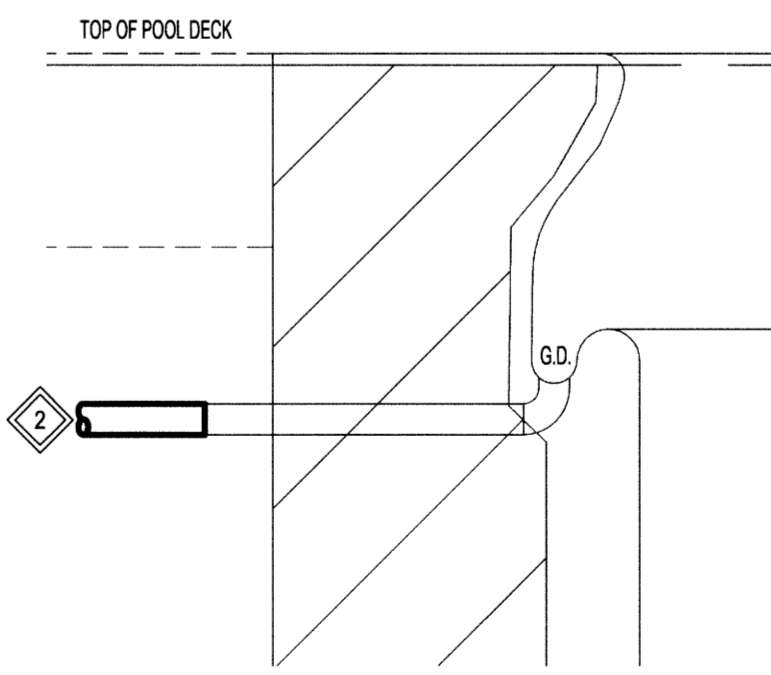
	EXISTING EQUIPMENT/PIPING TO BE REMOVED
	EXISTING EQUIPMENT/PIPING TO REMAIN
	EXISTING PIPING BELOW FLOOR
	F.D. FLOOR DRAIN
	D.F. DRINKING FOUNTAIN
	C.O. CLEAN OUT
	G.D. GUTTER DRAIN
	D.D. DECK DRAIN
	P.S. POOL SUPPLY
	VAC VACUUM
	H.B. HOSE BIBB
	TIP TIE-IN POINT

TIE-IN POINT (TIP) SCHEDULE

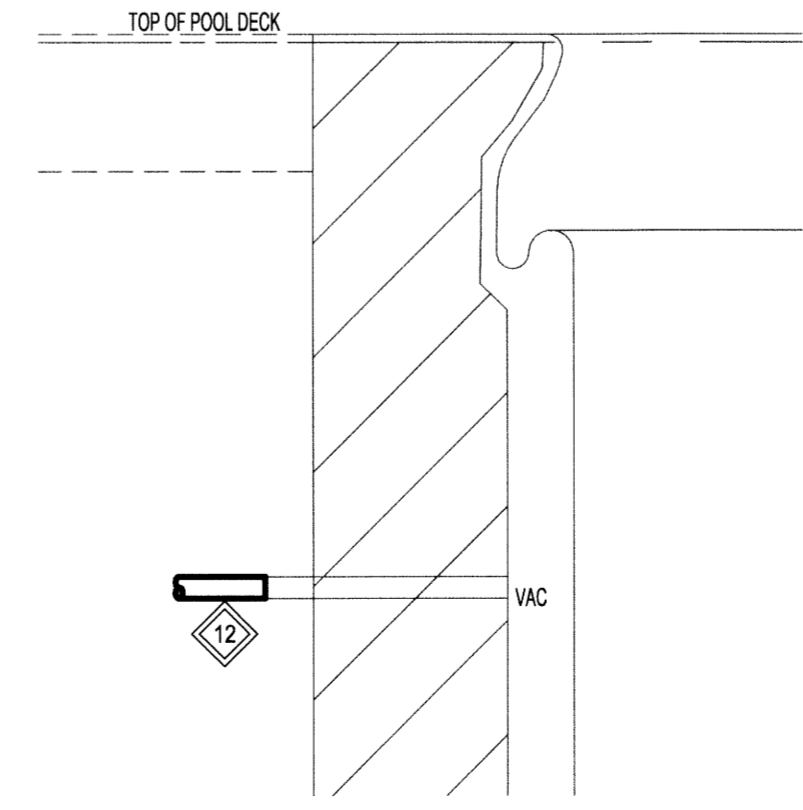
TIE-IN POINT	COMMENTS
TIP-6	POOL WATER SUPPLY
TIP-7	VACUUM
TIP-8	GUTTER DRAIN



SECTION A-A - POOL SUPPLY PIPING (TYP.)
SCALE: N.T.S.



SECTION B-B - GUTTER DRAIN (TYP.)
SCALE: N.T.S.



SECTION C-C - VACUUM (TYP.)
SCALE: N.T.S.

0	ISSUED FOR CONSTRUCTION	15.02.17
No.	REVISION/DESCRIPTION	BY DATE

SEAL

DRAWN	TJC	CHECKED	DESIGNED	MAP	APPROVED
DATE	2014.10.19	USER	APPROVAL		

THE CITY OF WINNIPEG
PLANNING, PROPERTY AND
DEVELOPMENT DEPARTMENT
MUNICIPAL ACCOMMODATIONS DIVISION
3-65 GARRY STREET, R3C 4K4

PROJECT
SHERBROOK POOL
REFURBISHMENT OF SHERBROOK POOL

381 SHERBROOK STREET
SHEET TITLE

MECHANICAL
MAIN FLOOR PLAN
PLUMBING - DEMOLITION

SCALE	PROJECT No:	SHEET No:
AS SHOWN	2013-173	M02

APEGM
Certificate of Authorization
KGS Group
No. 245

KGS GROUP
CONSULTING ENGINEERS

SCALE VERIFIED BY: *JK*