

BASEMENT FLOOR PLAN - HVAC DUCTWORK DEMOLITION
SCALE: 1/8"=1'-0"

GENERAL NOTES:

- PERFORM WORK IN ACCORDANCE WITH ALL APPLICABLE CODES AND REGULATIONS.
- EQUIPMENT LOCATIONS, DUCT, AND PIPE ROUTING INDICATED ON THE DRAWINGS IS APPROXIMATE ONLY. CONFIRM IN THE FIELD. REROUTE DUCTWORK AND PIPING AS REQUIRED TO ELIMINATE FIELD INTERFERENCES WITH BUILDING STRUCTURES, ELECTRICAL, ETC. CONFIRM CHANGES WITH CONTRACT ADMINISTRATOR. COORDINATE WORK WITH ALL SUBTRADES. WHERE DIMENSIONS ARE INDICATED FOR PIPING, DUCTWORK, DUCT SIZES, EQUIPMENT SIZES, ETC. THESE ARE FOR BIDDING PURPOSES ONLY. THE CONTRACTOR IS RESPONSIBLE TO VERIFY ALL DIMENSIONS IN THE FIELD PRIOR TO ORDERING EQUIPMENT AND COMMENCING INSTALLATION WITHOUT EXTRA CHARGES TO THE PROJECT. THE CONTRACTOR IS RESPONSIBLE TO ENSURE ALL EQUIPMENT, DUCTWORK, AND PIPING FITS IN THE SPACE AVAILABLE AND TO MAINTAIN THE GENERAL DESIGN INTENT FOR THE SYSTEMS.
- ALL REMOVED MATERIAL SHALL BE DISPOSED OF OFF SITE.
- INFILL ALL PENETRATIONS AFTER REMOVAL OF PIPING, DUCTWORK, ETC. AND FINISH TO MATCH EXISTING.

KEYNOTES:

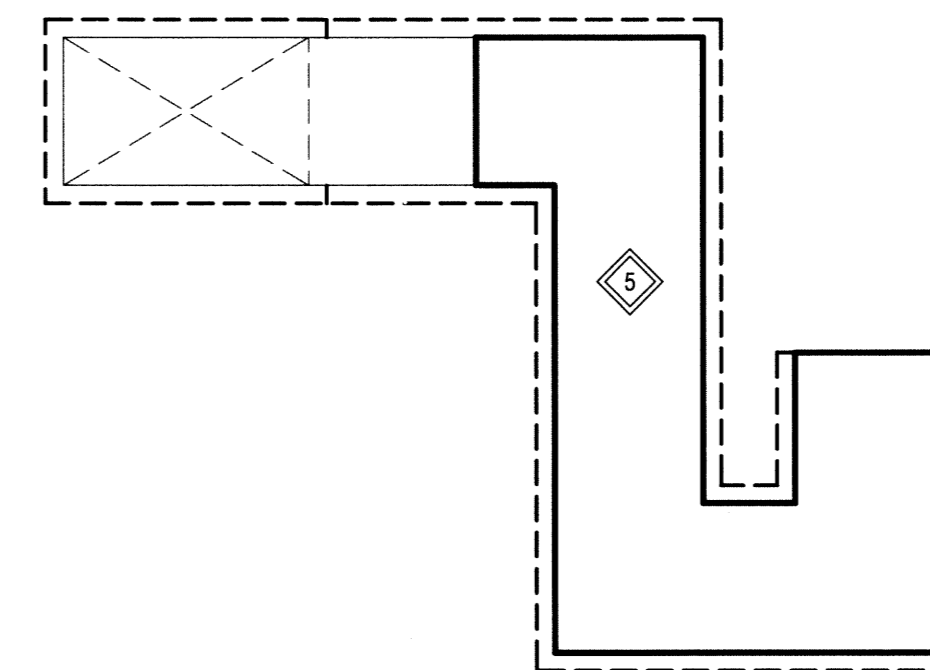
- REMOVE EXISTING MAKE-UP AIR SYSTEM, DUCTWORK AND CONTROLS. RETAIN EXISTING OUTDOOR AIR LOUVER TO BE RE-USED IN NEW DESIGN. REFER TO DRAWING M13 FOR NEW PLAN.
- REMOVE EXISTING EXHAUST FAN, CONTROLS AND ASSOCIATED EXHAUST DUCTWORK AS SHOWN. CAP EXHAUST DUCT RISER AT CEILING LEVEL.
- REMOVE EXISTING AIR HANDLING UNIT, AND ASSOCIATED DUCTWORK, PIPING, AND CONTROLS. (TYP.)
- REMOVE EXISTING FAN, AND ASSOCIATED DUCTWORK AND CONTROLS.
- REMOVE PORTION OF EXISTING COMBUSTION AIR DUCT AS SHOWN. (SEE SECTION A-A)
- REMOVE EXHAUST GRILLE LOCATED ON WALL. REPLACE WITH COVER PLATE, PAINTED TO MATCH WALL COLOR.
- REMOVE EXHAUST DUCT UP TO WALL AND CAP. EXISTING DUCT RISER EMBEDDED IN WALL TO BE ABANDONED IN PLACE.
- REMOVE EXISTING DUCT MOUNTED COILS AND ASSOCIATED WATER LINES. (TYP.)
- REMOVE EXISTING EXHAUST FAN, ASSOCIATED DUCTWORK, AND CONTROLS.

LEGEND:

- EXISTING EQUIPMENT/DUCTWORK TO BE REMOVED
- EXISTING EQUIPMENT/DUCTWORK TO REMAIN
- SUPPLY FAN
- AIR HANDLING UNIT
- EXHAUST FAN
- OUTSIDE AIR
- EXTERNALLY INSULATED DUCT

NOTES:

THESE DRAWINGS SHALL NOT BE SCALED.
THE CONTRACTOR SHALL VISIT THE SITE AND SATISFY ONESELF ALL DIMENSIONS, DATUM, AND DETAILED INFORMATION SHOWN ARE CORRECT.
THE CONTRACTOR IS TO REVIEW AND COORDINATE ALL ARCHITECTURAL, MECHANICAL, ELECTRICAL AND STRUCTURAL DRAWINGS FOR ADDITIONAL OPENINGS THROUGH FLOORS, WALLS, AND CEILINGS FOR DUCT, PIPE & ELECTRICAL RISERS AND ALL OPENINGS NOT SHOWN ON DRAWINGS.
ALL OPENINGS THROUGH FIRE ASSEMBLIES ARE TO BE FIRE STOPPED AND SEALED WITH UL-C APPROVED FIRE STOPPING TO MAINTAIN THE INTEGRITY OF THE FIRE SEPARATION, AND PROVIDE A SMOKE-TIGHT BARRIER.
ALL PRODUCTS AND MATERIALS TO BE USED AND INSTALLED SHALL CONFORM WITH MANUFACTURER'S SPECIFICATIONS & APPLICABLE CODES.
THE CONTRACTOR SHALL BE RESPONSIBLE TO PATCH AND MAKE GOOD ALL EXISTING CONSTRUCTION AFFECTED BY THE REMOVAL OF ALL ITEMS FORMING THE PART OF THE RENOVATION WORK.
WHERE NEW FLOORING AND BASE IS TO BE INSTALLED IN EXISTING AREAS (REFER TO FLOOR PLAN AND ROOM SCHEDULE) THE EXISTING FLOORING SURFACE AND BASE MUST BE REMOVED, UNLESS OTHERWISE NOTED. ALL FLOOR SURFACES SHALL BE PREPARED IN ACCORDANCE TO MANUFACTURER'S RECOMMENDATIONS FOR INSTALLATION OF NEW FLOORING.
WHERE PAINTING OF EXISTING WALLS IS INDICATED ON THE ROOM SCHEDULE, THESE WALLS MUST BE CLEANED OF ANY EXISTING WALL COVERING, PATCHED & PREPARED TO ACCEPT NEW MATERIAL, UNLESS OTHERWISE NOTED.



SECTION A-A - COMBUSTION AIR DUCT
SCALE: N.T.S.

0	ISSUED FOR CONSTRUCTION	15.02.17
No.	REVISION/DESCRIPTION	BY DATE



DRAWN	TJC	CHECKED	DESIGNED	MAP	APPROVED
DATE	2014.10.19	USER	APPROVAL		

THE CITY OF WINNIPEG
PLANNING, PROPERTY AND
DEVELOPMENT DEPARTMENT
MUNICIPAL ACCOMMODATIONS DIVISION
3-85 GARRY STREET, R3C 4K4

PROJECT
**SHERBROOK POOL
REFURBISHMENT OF SHERBROOK POOL**

381 SHERBROOK STREET
SHEET TITLE

MECHANICAL
BASEMENT FLOOR PLAN
HVAC DUCTWORK - DEMOLITION

SCALE	PROJECT No:	SHEET No:
AS SHOWN	2013-173	M05

SCALE VERIFIED BY: *TJC*

