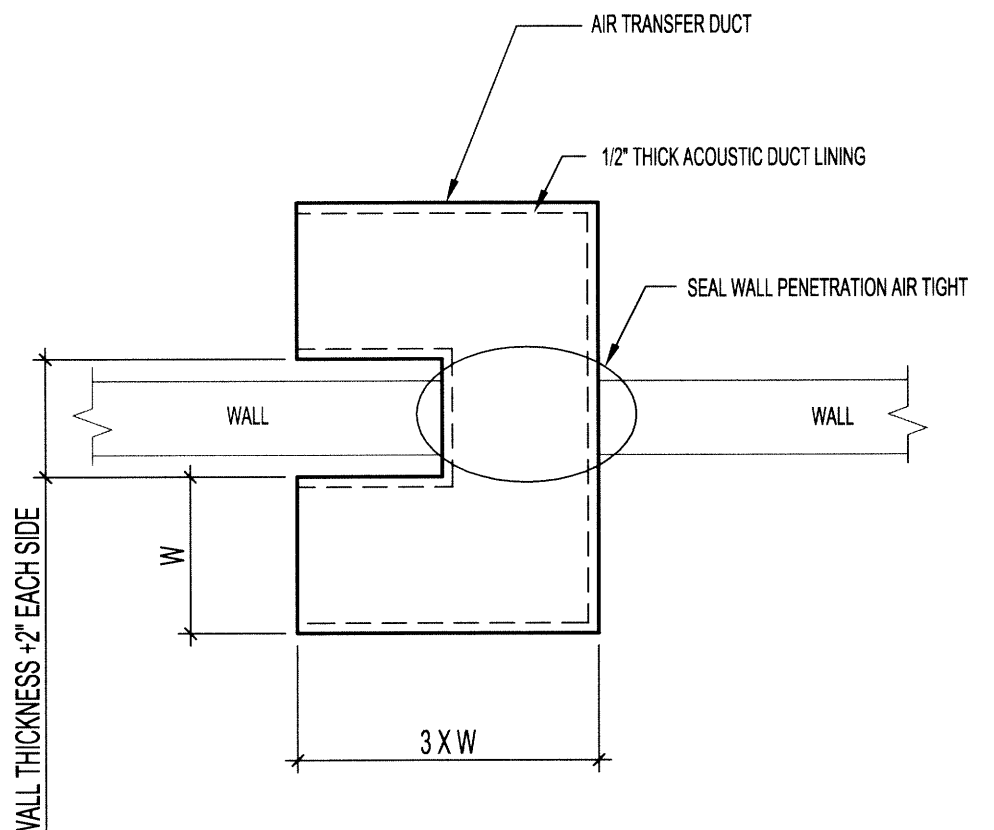


MAIN FLOOR PLAN - NEW HVAC
 SCALE: 1/8"=1'-0"



DETAIL B - TRANSFER DUCT DETAIL
 SCALE: N.T.S.

GENERAL NOTES:

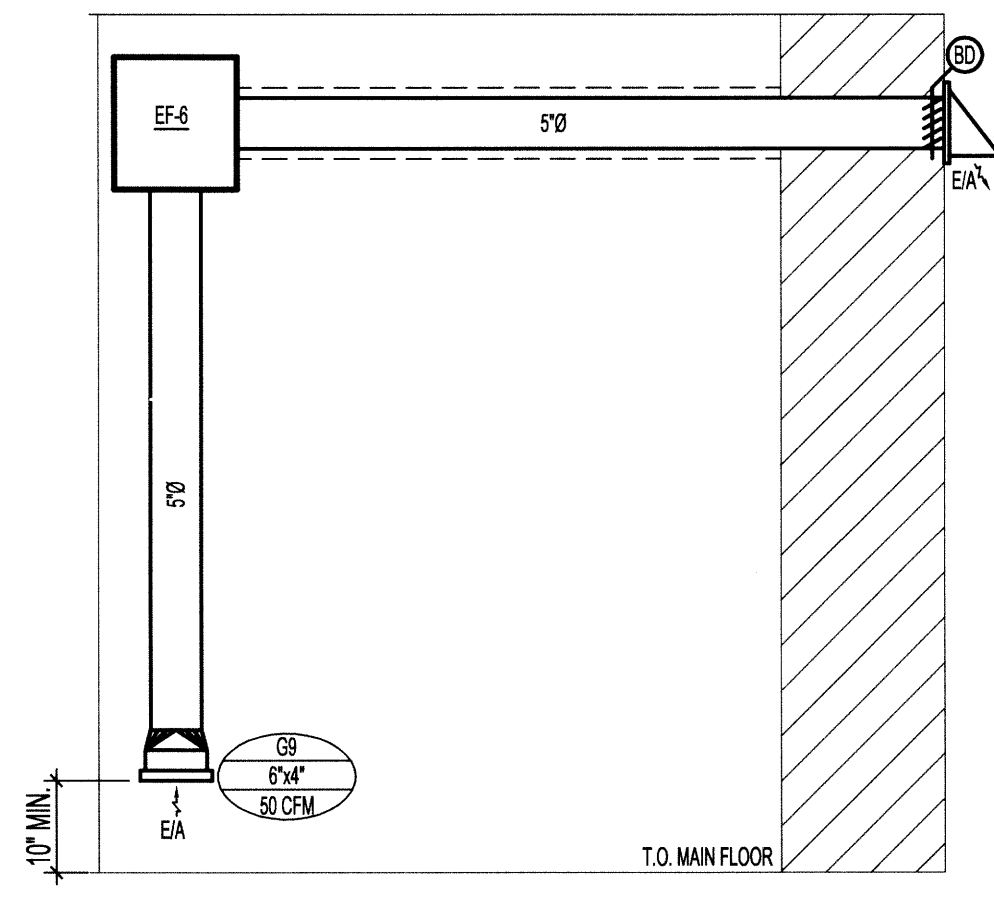
- PERFORM WORK IN ACCORDANCE WITH ALL APPLICABLE CODES AND REGULATIONS.
- REVIEW EQUIPMENT LOCATIONS WITH CONSULTANT PRIOR TO INSTALLATION.
- EQUIPMENT LOCATIONS, DUCT AND PIPE ROUTING INDICATED ON THE DRAWINGS IS APPROXIMATE ONLY. CONFIRM IN THE FIELD. REROUTE DUCTWORK AND PIPING AS REQUIRED TO ELIMINATE FIELD INTERFERENCES WITH BUILDING STRUCTURES, ELECTRICAL, ETC. CONFIRM CHANGES WITH CONTRACT ADMINISTRATOR. CO-ORDINATE WORK WITH ALL SUBTRADES. WHERE DIMENSIONS ARE INDICATED FOR PIPING, DUCTWORK, DUCT SIZES, EQUIPMENT SIZES, ETC. THESE ARE FOR BIDDING PURPOSES ONLY. THE CONTRACTOR IS RESPONSIBLE TO VERIFY ALL DIMENSIONS IN THE FIELD PRIOR TO ORDERING EQUIPMENT AND COMMENCING INSTALLATION WITHOUT EXTRA CHARGES TO THE PROJECT. THE CONTRACTOR IS RESPONSIBLE TO ENSURE ALL EQUIPMENT, DUCTWORK AND PIPING FITS IN THE SPACE AVAILABLE AND TO MAINTAIN THE GENERAL DESIGN INTENT FOR THE SYSTEMS.
- CONFORM TO SMACNA STANDARDS FOR SUPPLY AND INSTALLATION OF DUCTWORK.
- SEAL ALL WALL PENETRATIONS AND DUCTWORK WATER AND AIR TIGHT.
- PROVIDE ALL WALL PENETRATIONS, PENETRATIONS THROUGH FIRE RATED WALLS SHALL BE FIRE SEALED.

KEYNOTES:

- INSTALL NEW HOT WATER BASEBOARD AND FORCE FLOW HEATERS. REFER TO HOT WATER HEATING PIPING SCHEMATIC, (TYP.)
- INSTALL EXHAUST FAN (EF-3). MAINTAIN MINIMUM STRAIGHT LENGTH DISTANCE AT INLET OF EXHAUST FAN OF 3 DUCT DIAMETERS. PROVIDE FLEXIBLE DUCT CONNECTIONS AND MOUNT ON VIBRATION ISOLATOR HANGERS. REUSE EXISTING EXTERIOR WALL PENETRATION.
- INSTALL NEW EXHAUST FAN (EF-6). REFER TO SECTION A-A FOR DUCTING. PROVIDE CORING OF EXISTING WALL.
- INSTALL NEW TRANSFER AIR DUCT. REFER TO DETAIL B.
- SUPPLY DUCT RISER UP TO FLOOR ABOVE.
- RETURN DUCT RISER UP TO FLOOR ABOVE.
- INSTALL NEW VAV BOXES AS SHOWN. PROVIDE CONTROL WIRING.

LEGEND:

- NEW EQUIPMENT/DUCTWORK
- EXISTING EQUIPMENT/DUCTWORK
- CONTROL WIRING
- EF- EXHAUST FAN
- FF- FORCE FLOW HEATER
- BB- BASEBOARD HEATER
- ⊙- BALANCE DAMPER
- ⊕- BACKDRAFT DAMPER
- E/A- EXHAUST AIR
- ⊖- 1.5 HR RATED FIRE DAMPER CW ACCESS DOOR
- G- GRILLE NO.
- x- NECK SIZE
- CFM- AIR FLOW
- L- LOUVER NO.
- x- LOUVER SIZE
- CFM- AIR FLOW
- EXTERNALLY INSULATED DUCTWORK



SECTION A-A
 SCALE: N.T.S.

NOTES:

THESE DRAWINGS SHALL NOT BE SCALED.
 THE CONTRACTOR SHALL VISIT THE SITE AND SATISFY ONESELF ALL DIMENSIONS, DATUM, AND DETAILED INFORMATION SHOWN ARE CORRECT.
 THE CONTRACTOR IS TO REVIEW AND COORDINATE ALL ARCHITECTURAL, MECHANICAL, ELECTRICAL AND STRUCTURAL DRAWINGS FOR ADDITIONAL OPENINGS THROUGH FLOORS, WALLS, AND CEILINGS FOR DUCT, PIPE & ELECTRICAL RISERS AND ALL OPENINGS NOT SHOWN ON DRAWINGS.
 ALL OPENINGS THROUGH FIRE ASSEMBLIES ARE TO BE FIRE STOPPED AND SEALED WITH ULC APPROVED FIRE STOPPING TO MAINTAIN THE INTEGRITY OF THE FIRE SEPARATION, AND PROVIDE A SMOKE-TIGHT BARRIER.
 ALL PRODUCTS AND MATERIALS TO BE USED AND INSTALLED SHALL CONFORM WITH MANUFACTURER'S SPECIFICATIONS & APPLICABLE CODES.
 THE CONTRACTOR SHALL BE RESPONSIBLE TO PATCH AND MAKE GOOD ALL EXISTING CONSTRUCTION AFFECTED BY THE REMOVAL OF ALL ITEMS FORMING THE PART OF THE RENOVATION WORK.
 WHERE NEW FLOORING AND BASE IS TO BE INSTALLED IN EXISTING AREAS (REFER TO FLOOR PLAN AND ROOM SCHEDULE) THE EXISTING FLOORING SURFACE AND BASE MUST BE REMOVED, UNLESS OTHERWISE NOTED. ALL FLOOR SURFACES SHALL BE PREPARED IN ACCORDANCE TO MANUFACTURER'S RECOMMENDATIONS FOR INSTALLATION OF NEW FLOOR.
 WHERE PAINTING OF EXISTING WALLS IS INDICATED ON THE ROOM SCHEDULE, THESE WALLS MUST BE CLEANED OF ANY EXISTING WALL COVERING, PATCHED & PREPARED TO ACCEPT NEW MATERIAL, UNLESS OTHERWISE NOTED.

VAV SCHEDULE					
TAG	DESIGN AIR FLOW		VAV CAPACITY		MODEL
	MIN. (CFM)	MAX. (CFM)	MIN. (CFM)	MAX. (CFM)	
VAV-1	537	1074	0	1350	SDV 8000-10
VAV-2	263	526	0	650	SDV 8000-7
VAV-3	530	1060	0	1350	SDV 8000-10
VAV-4	270	540	0	650	SDV 8000-7

LOUVER SCHEDULE			
LOUVER NO.	LOUVER SIZE	MAKE / MODEL	COMMENTS
L1	12x12"	E.H. PRICE DES53	EXHAUST
L2	-	E.H. PRICE DES53	EXHAUST

0	ISSUED FOR CONSTRUCTION	15.02.17
No.	REVISION/DESCRIPTION	BY DATE



DRAWN	TJC	CHECKED	DESIGNED	MAP	APPROVED
DATE	2014.10.19	USER	APPROVAL		

Winnipeg
 THE CITY OF WINNIPEG
 PLANNING, PROPERTY AND
 DEVELOPMENT DEPARTMENT
 MUNICIPAL ACCOMMODATIONS DIVISION
 3-65 GARRY STREET, R3C 4K4

PROJECT
SHERBROOK POOL
 REFURBISHMENT OF SHERBROOK POOL

381 SHERBROOK STREET
 SHEET TITLE

MECHANICAL
 MAIN FLOOR PLAN
 HVAC - NEW

SCALE	PROJECT No:	SHEET No:
AS SHOWN	2013-173	M14

SCALE VERIFIED BY: TJC

