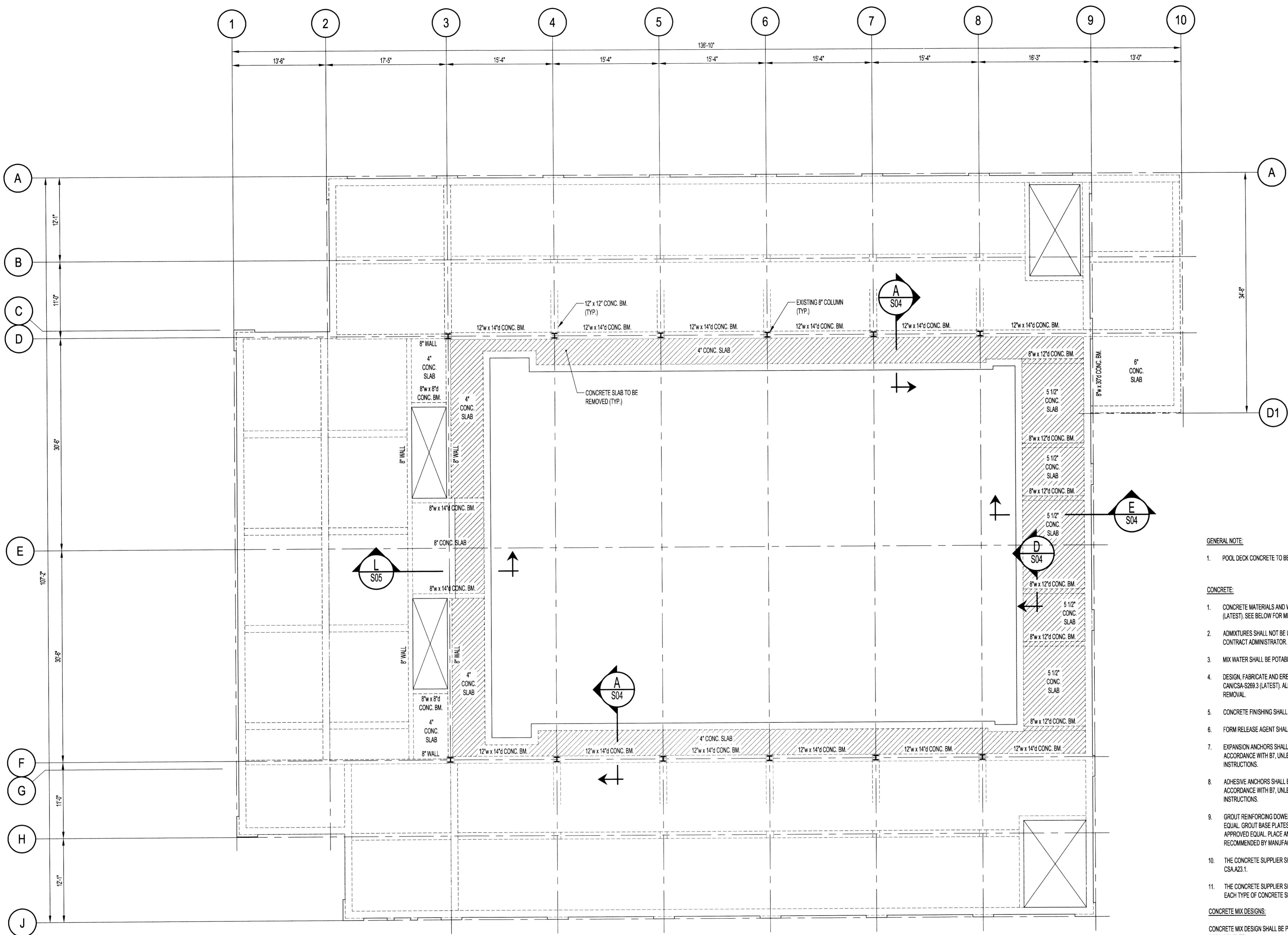


FILE NAME: 14-0107-021_S01.dwg | DATE: 2014.10.27 | SHEET TITLE: MAIN FLOOR FRAMING PLAN - DEMOLITION | PROJECT No: 2013-173 | ADDRESS: 381 SHERBROOK STREET



MAIN FLOOR FRAMING PLAN - DEMOLITION
SCALE: 1/8"=1'-0"

NOTES:
 THESE DRAWINGS SHALL NOT BE SCALED.
 THE CONTRACTOR SHALL VISIT THE SITE AND SATISFY ONESELF ALL DIMENSIONS, DATUM, AND DETAILED INFORMATION SHOWN ARE CORRECT.
 THE CONTRACTOR IS TO REVIEW AND COORDINATE ALL ARCHITECTURAL, MECHANICAL, ELECTRICAL AND STRUCTURAL DRAWINGS FOR ADDITIONAL OPENINGS THROUGH FLOORS, WALLS, AND CEILINGS FOR DUCT, PIPE & ELECTRICAL RISERS AND ALL OPENINGS NOT SHOWN ON DRAWINGS.
 ALL OPENINGS THROUGH FIRE ASSEMBLIES ARE TO BE FIRE STOPPED AND SEALED WITH U.L.C. APPROVED FIRE STOPPING TO MAINTAIN THE INTEGRITY OF THE FIRE SEPARATION, AND PROVIDE A SMOKE-TIGHT BARRIER.
 ALL PRODUCTS AND MATERIALS TO BE USED AND INSTALLED SHALL CONFORM WITH MANUFACTURER'S SPECIFICATIONS & APPLICABLE CODES.
 THE CONTRACTOR SHALL BE RESPONSIBLE TO PATCH AND MAKE GOOD ALL EXISTING CONSTRUCTION AFFECTED BY THE REMOVAL OF ALL ITEMS FORMING THE PART OF THE RENOVATION WORK.
 WHERE NEW FLOORING AND BASE IS TO BE INSTALLED IN EXISTING AREAS (REFER TO FLOOR PLAN AND ROOM SCHEDULE) THE EXISTING FLOORING SURFACE AND BASE MUST BE REMOVED, UNLESS OTHERWISE NOTED. ALL FLOOR SURFACES SHALL BE PREPARED IN ACCORDANCE TO MANUFACTURER'S RECOMMENDATIONS FOR INSTALLATION OF NEW FLOOR.
 WHERE PAINTING OF EXISTING WALLS IS INDICATED ON THE ROOM SCHEDULE, THESE WALLS MUST BE CLEANED OF ANY EXISTING WALL COVERING, PATCHED & PREPARED TO ACCEPT NEW MATERIAL, UNLESS OTHERWISE NOTED.

- STRUCTURAL AND MISCELLANEOUS STEEL:**
- STRUCTURAL AND MISCELLANEOUS STEEL FABRICATION AND ERECTION SHALL BE IN ACCORDANCE WITH CANCSA S16 (LATEST).
 - STRUCTURAL STEEL SHALL MEET THE REQUIREMENTS OF CANCSA G40.20/G40.21 (LATEST).
 ROLLED W-SHAPES CSA G40.21-350W
 ROLLED SHAPES & PLATES CSA G40.21-300W
 ANCHOR BOLTS (GALV.) ASTM A307
 BOLTS, NUTS, & WASHERS ASTM A325
 WELDING ELECTRODES CSA W48.1
 - WELDING SHALL BE IN ACCORDANCE WITH CSA W59 (LATEST), BY WELDERS CERTIFIED AND QUALIFIED IN ACCORDANCE WITH CSA W47.1 (LATEST). ALL WELDS TO BE 1/4" UNLESS NOTED OTHERWISE.
 - PAINTED SURFACES OF EXISTING STEEL SHALL BE GROUND SMOOTH TO BARE METAL PRIOR TO FIELD WELDING. USE E6018 LOW HYDROGEN ELECTRODE WITH 175°F PREHEAT FOR WELDING. REMOVE EXISTING STEEL COATING A MINIMUM 12" BACK FROM THE WELD LOCATION.
 - FIELD CONNECTIONS SHALL BE BOLTED 3/4" DIAMETER A325 BEARING TYPE UNLESS NOTED OTHERWISE. BOLTS SHALL BE TIGHTENED IN ACCORDANCE WITH CSA S16 (LATEST).
 - CONTRACTOR SHALL SUBMIT SHOP DRAWINGS FOR REVIEW PRIOR TO FABRICATION.
 - STRUCTURAL AND MISCELLANEOUS STEEL SHALL BE FINISHED AS INDICATED BELOW, UNLESS OTHERWISE NOTED, OR APPROVED EQUAL IN ACCORDANCE WITH BT:
 INTERIOR STEEL (COMMERCIAL)
 - SURFACE PREP TO SP2 (HAND TOOL CLEANING)
 - ONE COAT QUICK DRYING PRIMER TO CISC/CPMA 2-75
 - ONE FINISH COAT (6.0 MIL DFT)
 GALVANIZED STEEL
 - SURFACE PREP TO SP8 (PICKLING)
 - HOT DIPPED GALVANIZED TO CANCSA G164 (LATEST)

- GENERAL NOTE:**
- POOL DECK CONCRETE TO BE SLOPED TO DRAINS 1" IN ALL DIRECTIONS.
- CONCRETE:**
- CONCRETE MATERIALS AND WORKMANSHIP SHALL BE IN ACCORDANCE WITH CSA A23.1 (LATEST). SEE BELOW FOR MIX REQUIREMENTS.
 - ADDMIXTURES SHALL NOT BE USED UNLESS SPECIFIED HEREIN OR APPROVED BY THE CONTRACT ADMINISTRATOR. CALCIUM CHLORIDE SHALL NOT BE USED.
 - MIX WATER SHALL BE POTABLE.
 - DESIGN, FABRICATE AND ERECT FORMWORK/SHORING IN ACCORDANCE WITH CANCSA-S269.3 (LATEST). ALLOW SUFFICIENT CONCRETE CURING TIME PRIOR TO REMOVAL.
 - CONCRETE FINISHING SHALL MEET THE REQUIREMENTS OF CSA A23.1 (LATEST).
 - FORM RELEASE AGENT SHALL BE BIODEGRADABLE, NON-STAINING AND NON-VOLATILE.
 - EXPANSION ANCHORS SHALL BE HILTI KWIK-BOLTS OR APPROVED EQUAL IN ACCORDANCE WITH BT, UNLESS NOTED. INSTALL AS PER MANUFACTURER'S INSTRUCTIONS.
 - ADHESIVE ANCHORS SHALL BE HILTI HY150 HAS RODS OR APPROVED EQUAL IN ACCORDANCE WITH BT, UNLESS NOTED. INSTALL AS PER MANUFACTURER'S INSTRUCTIONS.
 - GROUT REINFORCING DOWELS WITH EPOXY GROUT HILTI HIT-HY150 MAX, OR APPROVED EQUAL. GROUT BASE PLATES WITH NON-SHRINK GROUT Sika M-BED STANDARD, OR APPROVED EQUAL. PLACE AND CURE ALL GROUT WITHIN TEMPERATURE RANGE RECOMMENDED BY MANUFACTURER.
 - THE CONCRETE SUPPLIER SHALL BE CERTIFIED TO MEET THE REQUIREMENTS OF CSA A23.1.
 - THE CONCRETE SUPPLIER SHALL SUBMIT CONCRETE MIX DATA SUBMISSION FORMS FOR EACH TYPE OF CONCRETE SPECIFIED FOR REVIEW PRIOR TO BATCHING ANY CONCRETE.

CONCRETE MIX DESIGNS:
 CONCRETE MIX DESIGN SHALL BE PROPORTIONED TO MEET THE FOLLOWING PERFORMANCE REQUIREMENTS:

EXPOSURE CLASS	N
MIN. 28 DAY COMP. STRENGTH	32 MPa
CEMENT TYPE	GU
MAX. W/C RATIO	0.45
MAX. AGGREGATE SIZE	20mm
ENTRAINED AIR CONTENT	N/A

0	ISSUED FOR CONSTRUCTION	15.02.17
No.	REVISION/DESCRIPTION	BY DATE

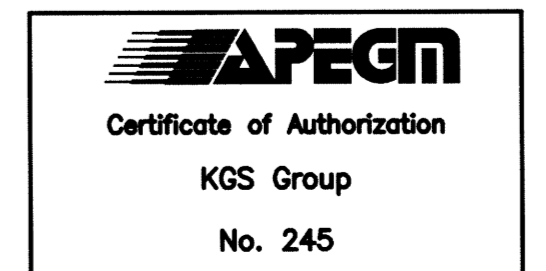
SEAL

DRAWN: MBR
 CHECKED: [Signature]
 DESIGNED: R.L.
 APPROVED: [Signature]
 DATE: 2014.10.27
 USER: [Signature]
 APPROVAL: [Signature]

THE CITY OF WINNIPEG
 PLANNING, PROPERTY AND DEVELOPMENT DEPARTMENT
 MUNICIPAL ACCOMMODATIONS DIVISION
 3-65 GARRY STREET, R3C 4K4

PROJECT: SHERBROOK POOL
 REFURBISHMENT OF SHERBROOK POOL

381 SHERBROOK STREET
 SHEET TITLE



STRUCTURAL
 MAIN FLOOR FRAMING PLAN
 DEMOLITION

SCALE	PROJECT No:	SHEET No:
AS SHOWN	2013-173	S01

DRAWING SHEET SIZE: A1 (841mm x 594mm) PLOT 1:1