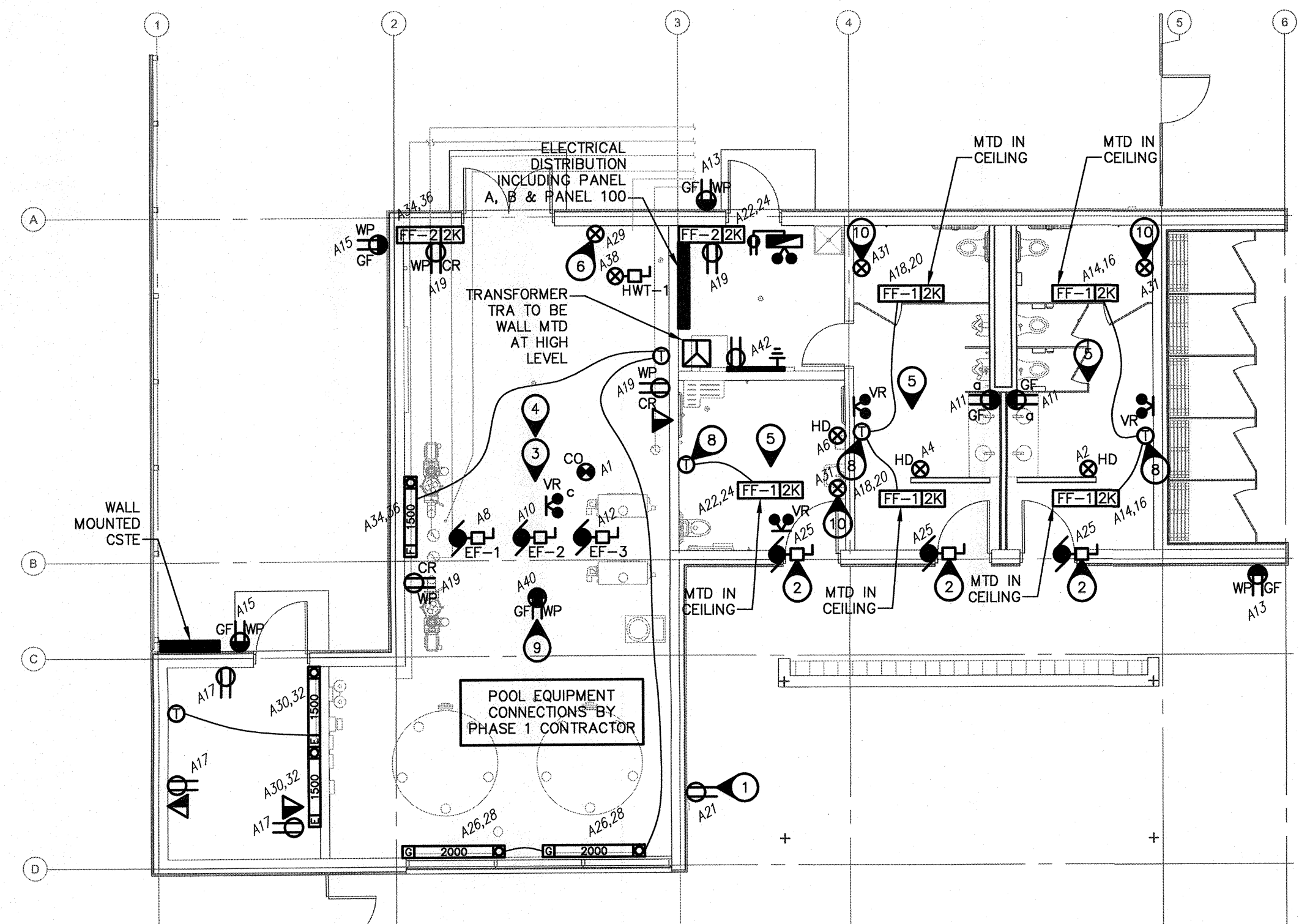


1
E20
ELECTRICAL MAIN FLOOR LAYOUT
SCALE: 1/8" = 1'-0"



2
E20
ELECTRICAL MAIN FLOOR LAYOUT
SCALE: 1/8" = 1'-0"

LUMINAIRE SCHEDULE			
TYPE	DESCRIPTION	CATALOG NUMBER	LAMPS
A	4' LED STRIP	LITHONIA ZLN-L48-3000LM-FST-120-40K-80CRI	30W LED
B	SUSPENDED VANDAL RESISTANT/VAPOUR TIGHT LED C/W OCCUPANCY SENSOR	LITHONIA DMW2-L24-4000LM-ACL-MD-120-G210-40K-80CRI-PMP4X-MS10NWL	40W LED
B1	SUSPENDED VANDAL RESISTANT/VAPOUR TIGHT LED	LITHONIA DMW2-L24-4000LM-ACL-MD-120-G210-40K-80CRI-PMP4X	40W LED
C1	LED TAPE LIGHT MOUNTED IN COVE C/W ALUMINUM CHANNEL AND REMOTE DRIVER	GREEN IMAGE-TECH GIT-P2-2413 G550BID2-24V-NW-300W	155W LED
C2	LED TAPE LIGHT MOUNTED IN COVE C/W ALUMINUM CHANNEL AND REMOTE DRIVER	GREEN IMAGE-TECH GIT-P2-2413 G550BID2-24V-NW-300W	155W LED
1	RECESSED LED - VAPOUR TIGHT/VANDAL RESISTANT	GOHAM EVO-VR-40-15-6AR-PPC-120	LED
2	LED WALL MOUNTED FIXTURE	LITHONIA DSKWI LED 10C-700-40K-T2M-120	27W LED
3	ARCHITECTURAL LED WALL MOUNTED DOWNLIGHT	BEGA 3581 LED	13W LED

LUMINAIRE SCHEDULE NOTES:
 1. ALL LUMINAIRES SHALL BE MB HYDRO "POWER SMART" APPROVED.
 2. COLOUR TEMPERATURE TO BE 4000K & 85 CRI, UNLESS OTHERWISE NOTED.
 3. PROVIDE PHOTOCELL CONTROL FOR ALL OUTDOOR LUMINAIRES.

SPECIFIC ELECTRICAL NOTES

- 1 RECEPTACLE MOUNTED BEHIND WATER FOUNTAIN. COORDINATE EXACT LOCATION WITH MECHANICAL CONTRACTOR.
- 2 WIRE AND CONNECT DOOR OPERATOR AND ALL ASSOCIATED CONTROLS.
- 3 POOL EQUIPMENT IS SUPPLIED AND INSTALLED BY OTHERS. (PHASE 1 CONTRACTOR)
- 4 ALL ELECTRICAL WITHIN MECHANICAL ROOM 102 IS TO BE CORROSION RESISTANT AND SUITABLE FOR WET LOCATION.
- 5 WIRE AND CONNECT AUTOMATIC SENSOR AT TOILET, FAUCETS, URINALS. (TYPICAL OF ALL) COORDINATE WITH MECHANICAL CONTRACTOR.
- 6 FOR LOW VOLTAGE CONTROLS. CONFIRM LOCATION WITH CONTROLS CONTRACTOR.
- 7 WIRING FOR C1 LIGHT IN WALL TO RUN UNDER EXTERIOR CONCRETE TO BUILDING. LOCATE DRIVER IN STORAGE 103. SIZE WIRING TO ACCOMMODATE DISTANCE, ACCORDING TO MANUFACTURER'S RECOMMENDATIONS.
- 8 PROVIDE A LOCKABLE POLYCARBONATE VENTED COVER OVER THERMOSTAT.
- 9 MOUNTED ON ROOF IN ACCORDANCE WITH WEB 26-704.
- 10 WIRE AND CONNECT L.V. TRANSFORMER(S) AS REQUIRED FOR HANDS FREE FAUCETS/FLUSH VALVES. COORDINATE LOCATIONS WITH MECHANICAL CONTRACTOR. CONCEAL WIRING WHERE POSSIBLE.

HEATING SCHEDULE						
TYPE	WATTS	VOLTAGE	DESCRIPTION	MANUFACTURER	CATALOGUE NO.	NOTES
E	1500	208	BASEBOARD	OUELLET	OFM150	1
F	1500	208	BASEBOARD	OUELLET	ODB150	1
G	2000	208	BASEBOARD	OUELLET	ODB200	1
H	2000	208	BASEBOARD	OUELLET	OFM200	1
FF-1	2250	208	FORCE FLOW	OUELLET	OACP3000	2
FF-2	2000	208	FORCE FLOW	OUELLET	OAWH015	2

SPECIFIC HEATING NOTES:
 1. C/W BUILT-IN THERMOSTAT OR WIRED TO REMOTE THERMOSTAT AS SHOWN ON DRAWINGS.
 2. RECESSED UNLESS OTHERWISE INDICATED. C/W BUILT-IN THERMOSTAT UNLESS OTHERWISE INDICATED.
 3. C/W BUILT-IN THERMOSTAT. MOUNT SECURELY WHERE INDICATED TO THE SATISFACTION OF THE ENGINEER.

GENERAL HEATING NOTES:
 A. VOLTAGE TO BE AS INDICATED ABOVE UNLESS OTHERWISE NOTED ON DRAWINGS.

MOTOR SCHEDULE								
NO.	DESCRIPTION	LOCATION	VOLTAGE	HP/W/MCA	C.B.	COND.	STARTER	NOTES
HWT-1	GAS FIRED HOT WATER TANK	MECHANICAL ROOM	120V-1PH	FRAC.	15A-1P	#12	-	1
EF-1	EXHAUST FAN	MECHANICAL ROOM	120V-1PH	FRAC.	15A-1P	#12	-	1
EF-2	EXHAUST FAN	MECHANICAL ROOM	120V-1PH	1/4HP	15A-1P	#12	-	1
EF-3	EXHAUST FAN	MECHANICAL ROOM	120V-1PH	1/4HP	15A-1P	#12	-	1

SPECIFIC NOTES:
 1. WIRE AND CONNECT AS REQUIRED. REFER TO MECHANICAL.
 2. MAGNETIC STARTER BY ELECTRICAL CONTRACTOR.
 3. MANUAL STARTER BY ELECTRICAL CONTRACTOR.
 4. COORDINATE INSTALLATION OF PATHWAYS TO FIT FOR SUMP PUMP WIRING.

GENERAL NOTES:
 A. MANUAL STARTERS TO BE C/W OVERCURRENT PROTECTION.
 B. ALL DISCONNECT SWITCHES TO BE SUPPLIED BY ELECTRICAL CONTRACTOR.
 C. ELECTRICAL CONTRACTOR TO PROVIDE CIRCUIT BREAKERS AND WIRING ACCORDING TO THE FINAL NAMEPLATES OF ALL THE MECHANICAL EQUIPMENT.
 D. ALL LOW VOLTAGE CONTROL WIRING BY MECHANICAL CONTRACTOR.
 E. ALL LINE VOLTAGE CONTROL WIRING BY ELECTRICAL CONTRACTOR - REFER TO MECHANICAL SECTION. CO-ORDINATE EXACT REQUIREMENTS WITH MECHANICAL CONTRACTOR.

PANEL A		SURFACE		VOLTAGE		120/208V-3PH-4W	
MOUNTING		LOCATION		MAIN BUS		200A	
STORE ROOM 103		REMARKS		-		-	
DESCRIPTION	BKR	CIRCUIT	BKR	DESCRIPTION	BKR	CIRCUIT	BKR
LIGHTING	15	1	2	HAND DRYER	15	3	4
LIGHTING	15	3	4	HAND DRYER	15	5	6
NIGHT LIGHTING	15	5	6	HAND DRYER	15	7	8
EXTERIOR LIGHTING	15	7	8	EF-1	15	9	10
CHANGE ROOM LIGHTING	15	9	10	EF-2	15	11	12
GF RECEPTACLES	15	11	12	EF-3	15	13	14
WP GF RECEPTACLES	15	13	14	CEILING MOUNTED ELECTRIC HEAT (4.5KW)	15	15	16
WP GF RECEPTACLES	15	15	16	#10 WIRE	15	17	18
RECEPTACLES	15	17	18	CEILING MOUNTED ELECTRIC HEAT (4.5KW)	15	19	20
RECEPTACLES	15	19	20	#10 WIRE	15	21	22
RECEPTACLE	15	21	22	ELECTRIC HEATERS (4.25KW)	15	23	24
SPACE	-	23	24	#10 WIRE	15	25	26
DOOR OPERATORS	15	25	26	BASEBOARD HEATERS (4KW)	15	27	28
FIXTURE SENSORS	15	27	28	#10 WIRE	15	29	30
LOW VOLTAGE CONTROLS FOR DAMPERS	15	29	30	BASEBOARD HEATERS (3KW)	15	31	32
LOW VOLTAGE CONTROLS FOR WASHROOMS	15	31	32	SPACE	15	33	34
SPACE	15	33	34	ELECTRIC HEATERS (3.5KW)	15	35	36
SPACE	15	35	36	SPACE	60	37	38
PANEL B	60	37	38	HWT-1	39	39	40
#6 WIRE	39	39	40	WP GF ROOF RECEPTACLE	41	41	42
	41	41	42	TELEPHONE BACKBOARD			

PANEL 100		SURFACE		VOLTAGE		347/600V-3PH-4W	
MOUNTING		LOCATION		MAIN BUS		200A	
STORE ROOM 103		REMARKS		FOR PHASE 1 CONTRACTOR USE		-	
DESCRIPTION	BKR	CIRCUIT	BKR	DESCRIPTION	BKR	CIRCUIT	BKR
SPARE	15	1	2	SPACE	15	3	4
SPARE	15	3	4	SPACE	15	5	6
SPARE	15	5	6	SPACE	15	7	8
SPARE	15	7	8	SPACE	15	9	10
SPARE	15	9	10	SPACE	15	11	12
SPACE	-	11	12	SPACE	15	13	14
SPACE	-	13	14	SPACE	15	15	16
SPACE	-	15	16	SPACE	15	17	18
SPACE	-	17	18	SPACE	15	19	20
SPACE	-	19	20	SPACE	15	21	22
SPACE	-	21	22	SPACE	15	23	24
SPACE	-	23	24	SPACE	15	25	26
SPACE	-	25	26	SPACE	15	27	28
SPACE	-	27	28	SPACE	15	29	30
SPACE	-	29	30	SPACE	15	31	32
SPACE	-	31	32	SPACE	15	33	34
SPACE	-	33	34	SPACE	15	35	36
SPACE	-	35	36	SPACE	15	37	38
SPACE	-	37	38	SPACE	15	39	40
SPACE	-	39	40	SPACE	15	41	42
SPACE	-	41	42	SPACE			

PANEL B		SURFACE		VOLTAGE		120/208V-3PH-4W	
MOUNTING		LOCATION		MAIN BUS		100A	
STORE ROOM 103		REMARKS		FOR PHASE 1 CONTRACTOR USE		-	
DESCRIPTION	BKR	CIRCUIT	BKR	DESCRIPTION	BKR	CIRCUIT	BKR
SPARE	15	1	2	SPACE	15	3	4
SPARE	15	3	4	SPACE	15	5	6
SPARE	15	5	6	SPACE	15	7	8
SPARE	15	7	8	SPACE	15	9	10
SPACE	-	9	10	SPACE	15	11	12
SPACE	-	11	12	SPACE	15	13	14
SPACE	-	13	14	SPACE	15	15	16
SPACE	-	15	16	SPACE	15	17	18
SPACE	-	17	18	SPACE	15	19	20
SPACE	-	19	20	SPACE	15	21	22
SPACE	-	21	22	SPACE	15	23	24
SPACE	-	23	24	SPACE			

4 YY.MM.DD -
 3 YY.MM.DD -
 2 YY.MM.DD -
 1 YY.MM.DD -
 0 2016.02.17 - Issued for Construction



NOVA 3 ENGINEERING LTD.
 CONSULTING ENGINEERS
 201-120 FORT STREET TEL: (204) 943-6142
 WINNIPEG, MANITOBA R3C 1C7 FAX: (204) 942-1276
 WWW.NOVA3.CA JN: 35-233

THIS DRAWING IS THE EXCLUSIVE PROPERTY OF NOVA 3 ENGINEERING LTD. AND MAY ONLY BE REPRODUCED WITH THE WRITTEN PERMISSION OF NOVA 3 ENGINEERING LTD.

Project: BID OPPORTUNITY 1008 - 2015
TRANSCONA CENTENNIAL POOL
 PHASE 1B - NEW OUTDOOR POOL BLDG
 1101 WABASHA STREET

ELECTRICAL - SCHEDULES AND LAYOUTS

APEGM
 Certificate of Authorization
 Nova 3 Engineering Ltd.
 No. 962 Date: 2016.02.17

Project No. 1426 Sheet
 Date Feb. 17, 2016
E2.0