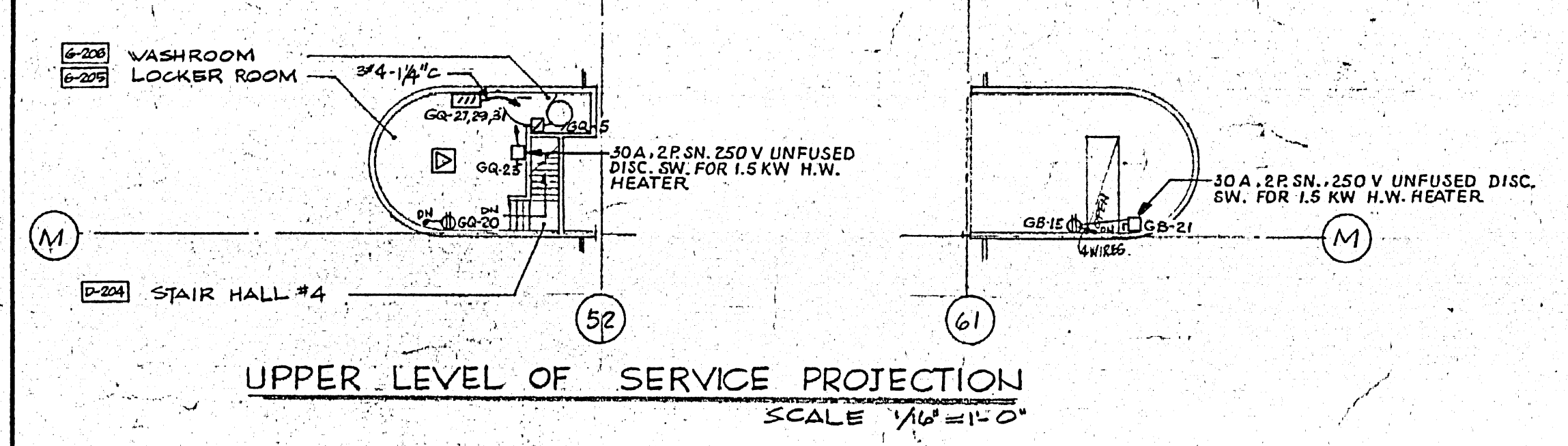
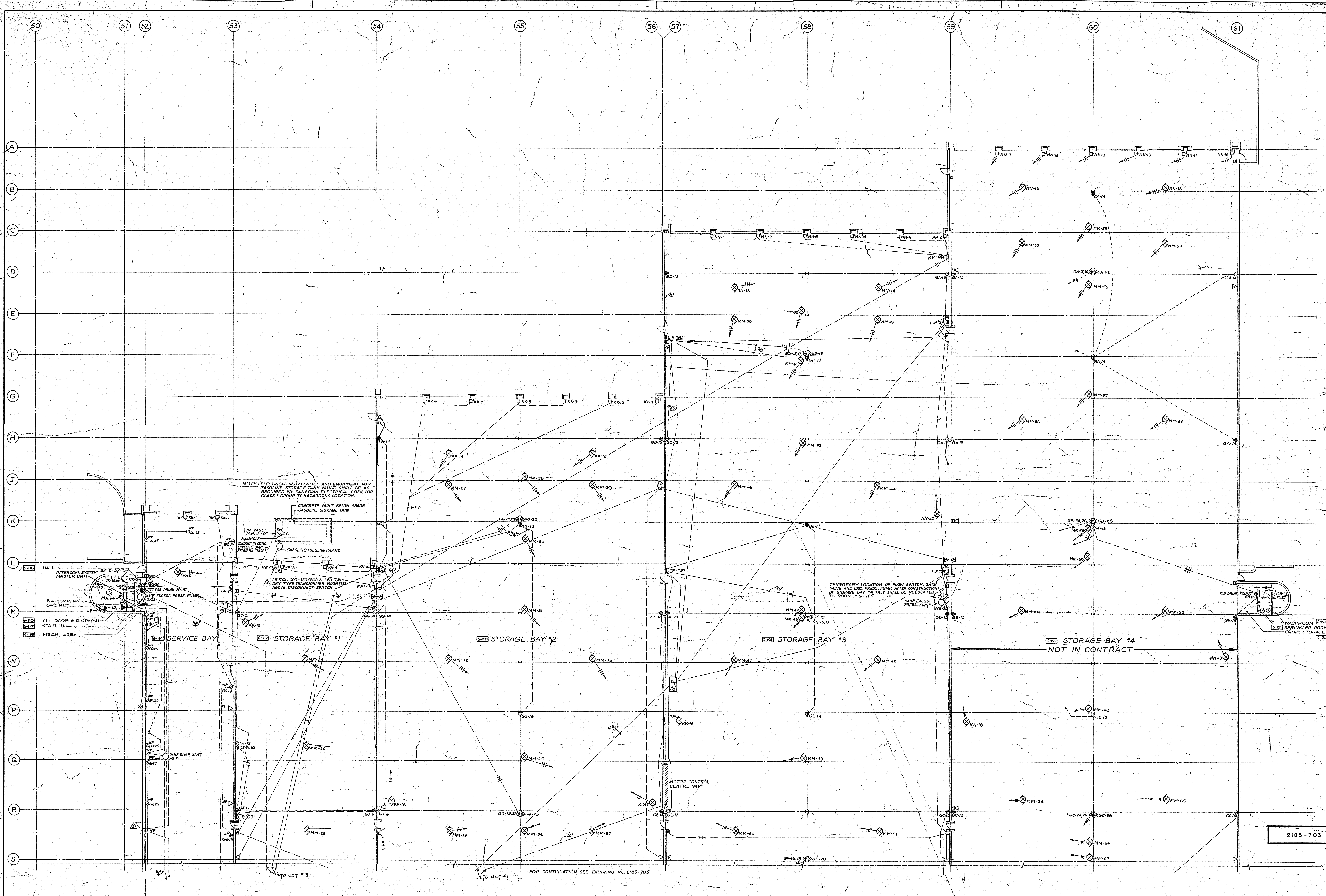


421 Osborne St.
 Shop Facilities
 2185-703
 Part Floor Plan - Garage North - Power



DATE	ISSUE NO.	REV.	DESCRIPTION	DRAWN BY
MAR 14 1967	7	A	AS BUILT	
MAR 14 1967	6	A	CIRCUIT # KK-20 REVISED	
MAR 14 1967	5	A	DOOR & EA. STATION ADDED ON WEST WALL BETWEEN COL. LINES R & S.	
MAR 14 1967	4		ISSUED FOR CONSTRUCTION	
MAR 14 1967	3		GENERAL REVISIONS	
MAR 14 1967	2		FOR TENDER	
MAR 14 1967	1		FOR APPROVAL	

ISSUE OR REVISION

METROPOLITAN CORPORATION OF GREATER WINNIPEG
 STREETS AND TRANSIT DIVISION

TRANSIT STORAGE AND SHOP FACILITIES

PART FLOOR PLAN - GARAGE NORTH - POWER

CONSULTING PROFESSIONAL ENGINEERS
A. D. MARJONSON AND ASSOCIATES LIMITED
 155 LESLIE STREET, 5TH FLOOR, WINNIPEG, MANITOBA

ARCHITECTS
Walsman Ross + Blankstein
 10 DONALD STREET, WINNIPEG, MANITOBA

APPROVED: *[Signature]* DATE: 21 July 1967
 CHECKED: *[Signature]* SCALE: 1/8" = 1'-0"
 FILE NO.: 2185-703
 SHEET NO.: ELECTRICAL

2185-703