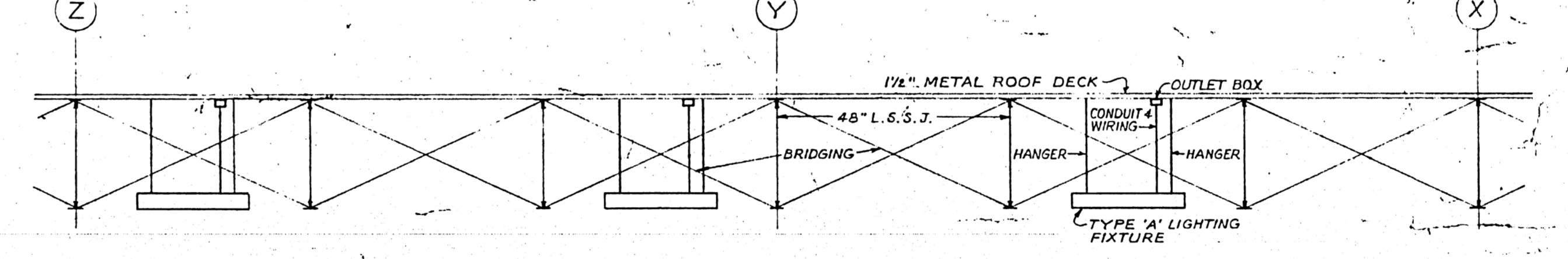
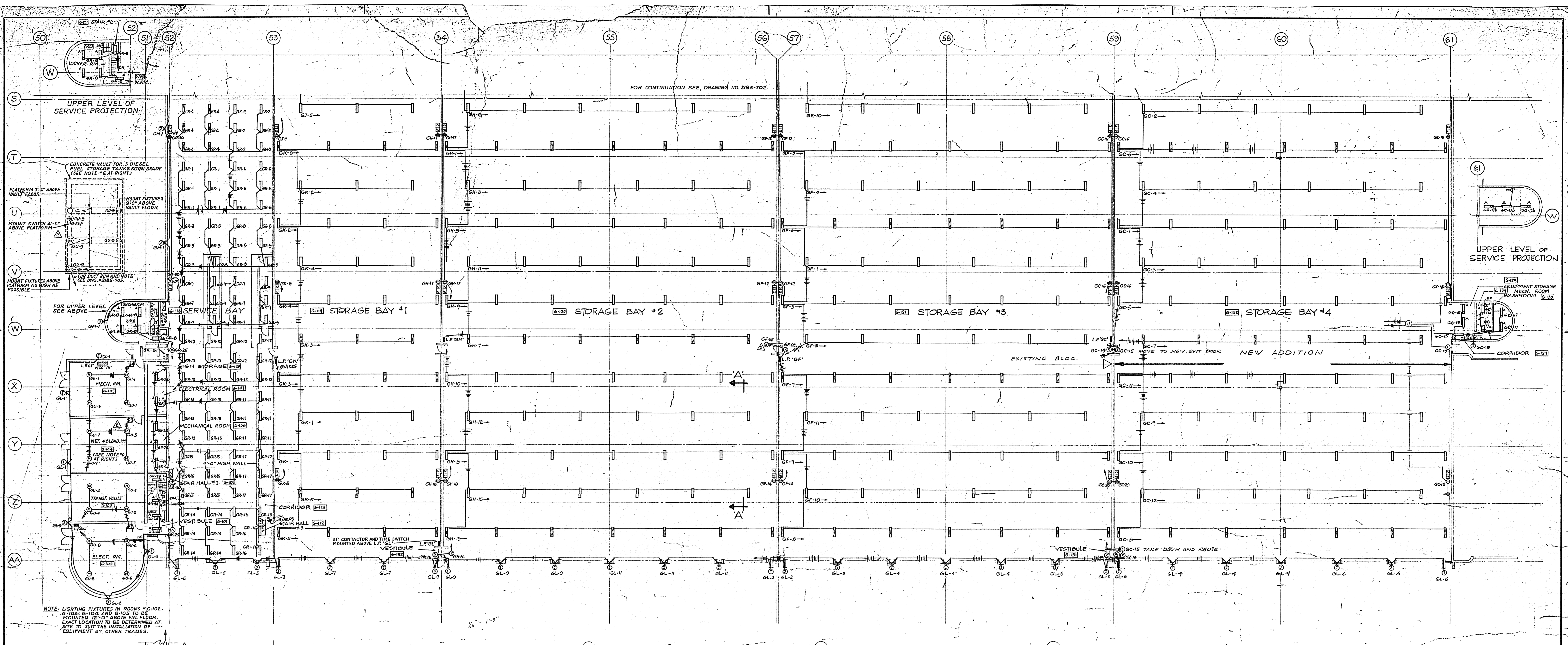


421 DORRIS ST.
 TRANSIT STORAGE
 SHOP FACILITIES
 PART FLOOR PLAN - GARAGE SOUTH - LIGHTING
 SCALE: 1/4" = 1'-0"

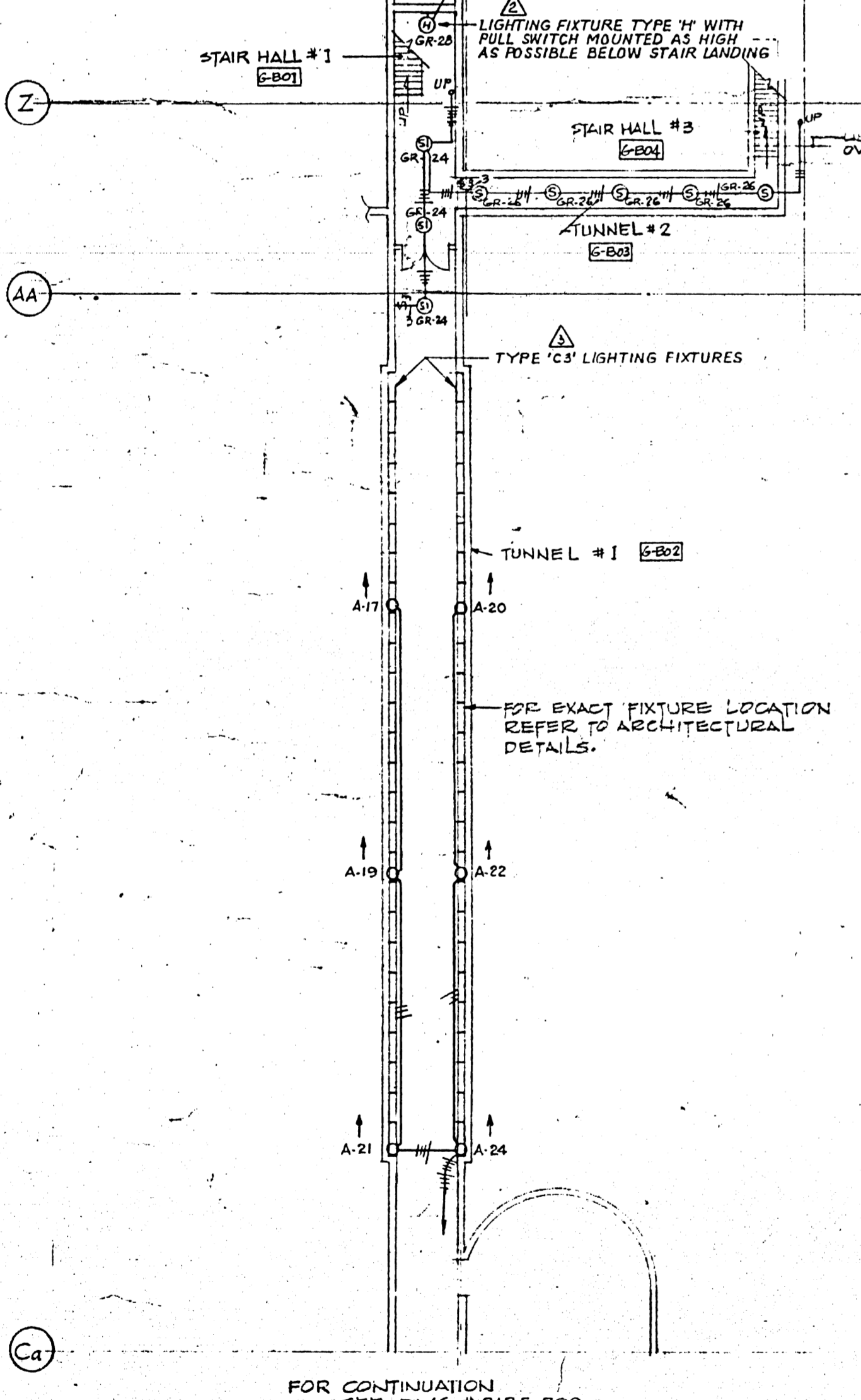


SECTION 'A-A'
 SCALE: 1/4" = 1'-0"
 SHOWING TYPICAL MOUNTING OF TYPE 'A' LIGHTING FIXTURES
 IN STORAGE BAYS.

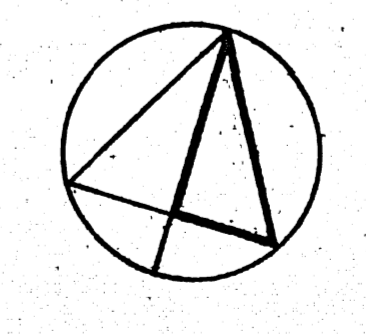
NOTES:

1. ALL 1" x 4" FLUORESCENT LIGHTING FIXTURES IN GARAGES SHALL BE TYPE 'A' FOR TYPICAL MOUNTING SEE SECTION 'A-A'.
2. ALL WALL MOUNTED, TYPE 'X' EXIT LIGHTS TO BE MOUNTED 8'-0" ABOVE FINISHED FLOOR.
3. EMERGENCY LIGHTING BATTERY UNITS AND RECEPTACLES FOR THEM TO BE MOUNTED 12'-0" ABOVE FINISHED FLOOR. PROVIDE SUITABLE STEEL SHELVES FOR MOUNTING OF BATTERY UNITS.
4. ALL OUTDOOR, TYPE 'D' LIGHTING FIXTURES TO BE MOUNTED 9'-0" ABOVE FINISHED GRADE EXCEPT AS NOTED ON ARCHITECTURAL DRAWINGS.
5. ALL 1" x 4" FLUORESCENT LIGHTING FIXTURES IN SERVICE BAY (BETWEEN COLUMN LINES 52 AND 53) SHALL BE TYPE 'B'.
6. ELECTRICAL INSTALLATION AND EQUIPMENT FOR DIESEL FUEL STORAGE TANKS VAULT SHALL BE AS REQUIRED BY CANADIAN ELECTRICAL CODE FOR CLASS I GROUP 'D' HAZARDOUS LOCATION.
7. TYPE 'C3' LIGHTING FIXTURE SHALL BE 1" x 4" FLUORESCENT, COMPLETE WITH 2-40 W. C.W. R. S. LAMPS, N.P.S. BALLASTS AND TA- STYRENE GUE, LOUVER, WAKEFIELD #TR-082-12 OR APPROVED EQUAL.

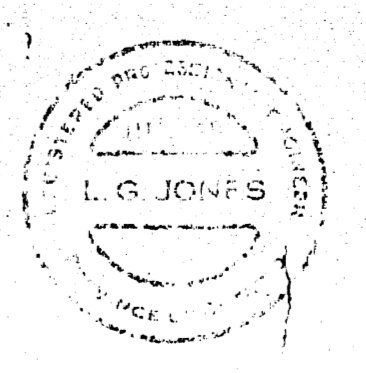
PLAN OF TUNNEL
 SCALE: 1/4" = 1'-0"



APPROVED
 A. D. MARGISON ASSOCIATES LTD.
 CONSULTING PROFESSIONAL ENGINEERS
 SUITE 200-1500 YONGE STREET
 TORONTO, ONTARIO MAY 1977



MANITOBA ENGINEERING
 NUMBER TEN ARCHITECTURAL GROUP
 ARCHITECTS PLANNERS AND ENGINEERS



DATE	ISSUE NO.	REV. NO.	DESCRIPTION	DRAWN BY	CHECKED BY
APR 77	AS BUILT DRAWINGS	UPGRADE - BAY #4			
MAY 77	8	4	REVISE WIRING IN BAY #4		
MAY 77	7	4	CABLES ADDITION - FOR TENDER		
MAY 77	7	4	AS BUILT		
OCT 24-68	6	4	LIGHTING FIXTURES TYPE 'A' IN TUNNEL CHANGED TO TYPE 'C3'		
MAY 21-62	5	4	IN ROOM #104 (1/4" FIT CHANGED TO TYPE 'M' EXIT LIGHTS ADDED)		
MAY 21-62	4	4	REVISIONS FOR CONDUCT BUNCTION		
MAY 21-62	3	1	GENERAL REVISIONS		
MAY 19-62	2	1	FOR TENDER		
NOV 62	1	0	FOR APPROVAL		

ISSUE OR REVISION	
METROPOLITAN CORPORATION OF GREATER WINNIPEG STREETS AND TRANSIT DIVISION	
TRANSIT STORAGE AND SHOP FACILITIES	
PART FLOOR PLAN - GARAGE SOUTH - LIGHTING	
CONSULTING PROFESSIONAL ENGINEERS A. D. MARGISON AND ASSOCIATES LIMITED 1155 LESLIE STREET, DON MILLS, ONTARIO	ARCHITECTS William Ross + Blankstein Coop Gillmor Hanna 10 DONALD STREET, WINNIPEG, MANITOBA
APPROVED A. D. MARGISON	DRAWN BY L.S. JONES
DATE 21 JULY 1977	SCALE AS SHOWN
PROJECT NO. 2185-704	SHEET NO. ELECTRICAL

2185-704