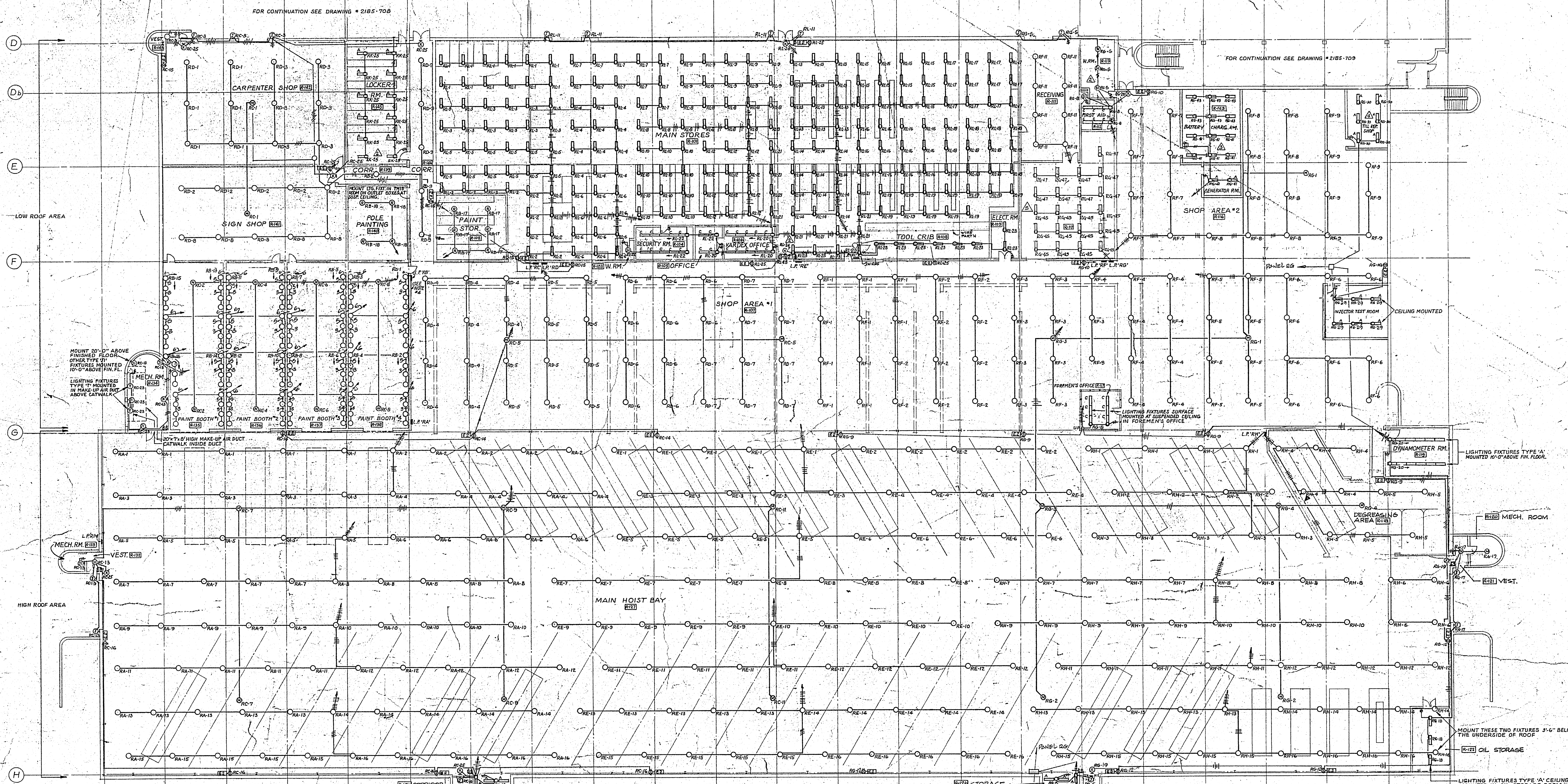


1 2 3 4 5 6 7 8 9 10 11 12 13 14 15 16 17 18 19 20 21 22 23



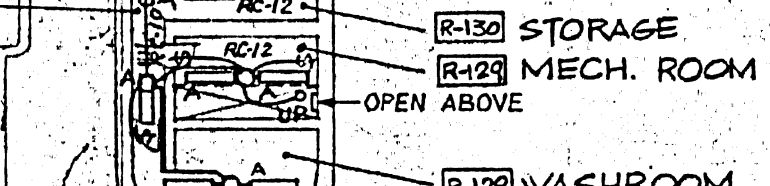
FOR CONTINUATION SEE DRAWING # 2185-708

FOR CONTINUATION SEE DRAWING # 2185-708

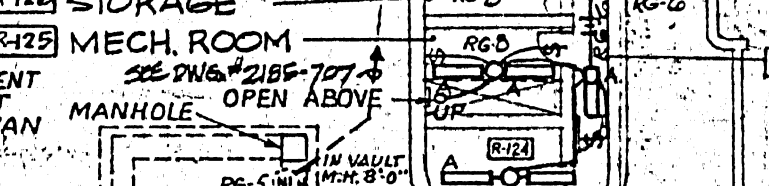
LOW ROOF AREA

HIGH ROOF AREA

H



NOTE: ELECTRICAL INSTALLATION AND EQUIPMENT FOR WASTE OIL STORAGE TANK VAULT SHALL BE AS REQUIRED BY CANADIAN ELECTRICAL CODE FOR CLASS I, GROUP II, HAZARDOUS LOCATION.



NOTE: ELECTRICAL INSTALLATION AND EQUIPMENT FOR WASTE OIL STORAGE TANK VAULT SHALL BE AS REQUIRED BY CANADIAN ELECTRICAL CODE FOR CLASS I, GROUP II, HAZARDOUS LOCATION.

STORAGE AREA UPPER LEVEL

STORAGE AREA UPPER LEVEL

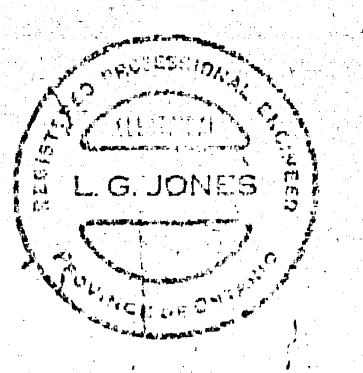
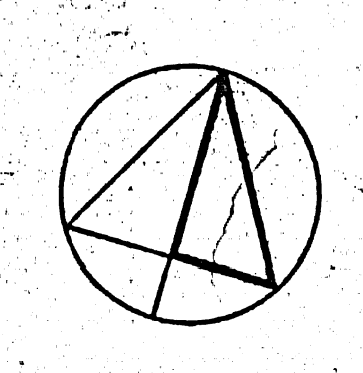
OVERHAUL AND REPAIR SHOP FLOOR PLAN

NOTES:

1. ALL LIGHTING FIXTURES IN MAIN HOIST BAY (HIGH ROOF AREA) SHALL BE TYPE 'A' UNLESS OTHERWISE NOTED. MOUNT BOTTOM OF FIXTURE FLUSH WITH THE BOTTOM FLANGE OF BEAM UNLESS OTHERWISE NOTED.
2. ALL LIGHTING FIXTURES IN SHOPS AND STORES (LOW ROOF AREA) SHALL BE TYPE 'A' UNLESS OTHERWISE NOTED. MOUNT BOTTOM OF FIXTURE FLUSH WITH THE BOTTOM FLANGE OF BEAM UNLESS OTHERWISE NOTED.
3. ALL LIGHTING FIXTURES IN PAINT BOOTHS SHALL BE TYPE 'A' UNLESS OTHERWISE NOTED. MOUNT FIXTURES ON OUTLET BOXES AT SUSPENDED CEILING.
4. 1/2" THICK STEEL PLATE (SIZE TO SUIT) MOUNTED 8'-0" ABOVE FINISHED FLOOR FOR MOUNTING OF 75 400 W MERCURY VAPOR 5-WATT BALLASTS.
5. ALL 1" x 4" FLUORESCENT LIGHTING FIXTURES IN MAIN STORES, TOOL CRIB, AND ELECT. RM. SHALL BE TYPE 'A' UNLESS OTHERWISE NOTED. MOUNT BOTTOM OF FIXTURE FLUSH WITH THE BOTTOM FLANGE OF BEAM.
6. ALL OUTDOOR LIGHTING FIXTURES TYPE 'J' SHALL BE MOUNTED 10'-0" ABOVE FINISHED GRADE EXCEPT AS NOTED ON ARCHITECTURAL DRAWINGS, AND INDOOR TYPE 'J' 8'-0" ABOVE FINISHED FLOOR UNLESS OTHERWISE NOTED.

2185-706

NO.	DATE	BY	DESCRIPTION
REV. 01	11/10/67	EM	REVISED LIGHTING IN TIRE STORAGE, EM NO.
REV. 02	11/10/67	EM	REVISED LIGHTING IN TIRE STORAGE, EM NO.
REV. 03	11/10/67	EM	REVISED LIGHTING IN TIRE STORAGE, EM NO.
REV. 04	11/10/67	EM	REVISED LIGHTING IN TIRE STORAGE, EM NO.
REV. 05	11/10/67	EM	REVISED LIGHTING IN TIRE STORAGE, EM NO.
REV. 06	11/10/67	EM	REVISED LIGHTING IN TIRE STORAGE, EM NO.
REV. 07	11/10/67	EM	REVISED LIGHTING IN TIRE STORAGE, EM NO.
REV. 08	11/10/67	EM	REVISED LIGHTING IN TIRE STORAGE, EM NO.
REV. 09	11/10/67	EM	REVISED LIGHTING IN TIRE STORAGE, EM NO.
REV. 10	11/10/67	EM	REVISED LIGHTING IN TIRE STORAGE, EM NO.
REV. 11	11/10/67	EM	REVISED LIGHTING IN TIRE STORAGE, EM NO.
REV. 12	11/10/67	EM	REVISED LIGHTING IN TIRE STORAGE, EM NO.
REV. 13	11/10/67	EM	REVISED LIGHTING IN TIRE STORAGE, EM NO.
REV. 14	11/10/67	EM	REVISED LIGHTING IN TIRE STORAGE, EM NO.
REV. 15	11/10/67	EM	REVISED LIGHTING IN TIRE STORAGE, EM NO.
REV. 16	11/10/67	EM	REVISED LIGHTING IN TIRE STORAGE, EM NO.
REV. 17	11/10/67	EM	REVISED LIGHTING IN TIRE STORAGE, EM NO.
REV. 18	11/10/67	EM	REVISED LIGHTING IN TIRE STORAGE, EM NO.
REV. 19	11/10/67	EM	REVISED LIGHTING IN TIRE STORAGE, EM NO.
REV. 20	11/10/67	EM	REVISED LIGHTING IN TIRE STORAGE, EM NO.
REV. 21	11/10/67	EM	REVISED LIGHTING IN TIRE STORAGE, EM NO.
REV. 22	11/10/67	EM	REVISED LIGHTING IN TIRE STORAGE, EM NO.
REV. 23	11/10/67	EM	REVISED LIGHTING IN TIRE STORAGE, EM NO.
REV. 24	11/10/67	EM	REVISED LIGHTING IN TIRE STORAGE, EM NO.
REV. 25	11/10/67	EM	REVISED LIGHTING IN TIRE STORAGE, EM NO.
REV. 26	11/10/67	EM	REVISED LIGHTING IN TIRE STORAGE, EM NO.
REV. 27	11/10/67	EM	REVISED LIGHTING IN TIRE STORAGE, EM NO.
REV. 28	11/10/67	EM	REVISED LIGHTING IN TIRE STORAGE, EM NO.
REV. 29	11/10/67	EM	REVISED LIGHTING IN TIRE STORAGE, EM NO.
REV. 30	11/10/67	EM	REVISED LIGHTING IN TIRE STORAGE, EM NO.
REV. 31	11/10/67	EM	REVISED LIGHTING IN TIRE STORAGE, EM NO.
REV. 32	11/10/67	EM	REVISED LIGHTING IN TIRE STORAGE, EM NO.
REV. 33	11/10/67	EM	REVISED LIGHTING IN TIRE STORAGE, EM NO.
REV. 34	11/10/67	EM	REVISED LIGHTING IN TIRE STORAGE, EM NO.
REV. 35	11/10/67	EM	REVISED LIGHTING IN TIRE STORAGE, EM NO.
REV. 36	11/10/67	EM	REVISED LIGHTING IN TIRE STORAGE, EM NO.
REV. 37	11/10/67	EM	REVISED LIGHTING IN TIRE STORAGE, EM NO.
REV. 38	11/10/67	EM	REVISED LIGHTING IN TIRE STORAGE, EM NO.
REV. 39	11/10/67	EM	REVISED LIGHTING IN TIRE STORAGE, EM NO.
REV. 40	11/10/67	EM	REVISED LIGHTING IN TIRE STORAGE, EM NO.
REV. 41	11/10/67	EM	REVISED LIGHTING IN TIRE STORAGE, EM NO.
REV. 42	11/10/67	EM	REVISED LIGHTING IN TIRE STORAGE, EM NO.
REV. 43	11/10/67	EM	REVISED LIGHTING IN TIRE STORAGE, EM NO.
REV. 44	11/10/67	EM	REVISED LIGHTING IN TIRE STORAGE, EM NO.
REV. 45	11/10/67	EM	REVISED LIGHTING IN TIRE STORAGE, EM NO.
REV. 46	11/10/67	EM	REVISED LIGHTING IN TIRE STORAGE, EM NO.
REV. 47	11/10/67	EM	REVISED LIGHTING IN TIRE STORAGE, EM NO.
REV. 48	11/10/67	EM	REVISED LIGHTING IN TIRE STORAGE, EM NO.
REV. 49	11/10/67	EM	REVISED LIGHTING IN TIRE STORAGE, EM NO.
REV. 50	11/10/67	EM	REVISED LIGHTING IN TIRE STORAGE, EM NO.
REV. 51	11/10/67	EM	REVISED LIGHTING IN TIRE STORAGE, EM NO.
REV. 52	11/10/67	EM	REVISED LIGHTING IN TIRE STORAGE, EM NO.
REV. 53	11/10/67	EM	REVISED LIGHTING IN TIRE STORAGE, EM NO.
REV. 54	11/10/67	EM	REVISED LIGHTING IN TIRE STORAGE, EM NO.
REV. 55	11/10/67	EM	REVISED LIGHTING IN TIRE STORAGE, EM NO.
REV. 56	11/10/67	EM	REVISED LIGHTING IN TIRE STORAGE, EM NO.
REV. 57	11/10/67	EM	REVISED LIGHTING IN TIRE STORAGE, EM NO.
REV. 58	11/10/67	EM	REVISED LIGHTING IN TIRE STORAGE, EM NO.
REV. 59	11/10/67	EM	REVISED LIGHTING IN TIRE STORAGE, EM NO.
REV. 60	11/10/67	EM	REVISED LIGHTING IN TIRE STORAGE, EM NO.
REV. 61	11/10/67	EM	REVISED LIGHTING IN TIRE STORAGE, EM NO.
REV. 62	11/10/67	EM	REVISED LIGHTING IN TIRE STORAGE, EM NO.
REV. 63	11/10/67	EM	REVISED LIGHTING IN TIRE STORAGE, EM NO.
REV. 64	11/10/67	EM	REVISED LIGHTING IN TIRE STORAGE, EM NO.
REV. 65	11/10/67	EM	REVISED LIGHTING IN TIRE STORAGE, EM NO.
REV. 66	11/10/67	EM	REVISED LIGHTING IN TIRE STORAGE, EM NO.
REV. 67	11/10/67	EM	REVISED LIGHTING IN TIRE STORAGE, EM NO.
REV. 68	11/10/67	EM	REVISED LIGHTING IN TIRE STORAGE, EM NO.
REV. 69	11/10/67	EM	REVISED LIGHTING IN TIRE STORAGE, EM NO.
REV. 70	11/10/67	EM	REVISED LIGHTING IN TIRE STORAGE, EM NO.
REV. 71	11/10/67	EM	REVISED LIGHTING IN TIRE STORAGE, EM NO.
REV. 72	11/10/67	EM	REVISED LIGHTING IN TIRE STORAGE, EM NO.
REV. 73	11/10/67	EM	REVISED LIGHTING IN TIRE STORAGE, EM NO.
REV. 74	11/10/67	EM	REVISED LIGHTING IN TIRE STORAGE, EM NO.
REV. 75	11/10/67	EM	REVISED LIGHTING IN TIRE STORAGE, EM NO.
REV. 76	11/10/67	EM	REVISED LIGHTING IN TIRE STORAGE, EM NO.
REV. 77	11/10/67	EM	REVISED LIGHTING IN TIRE STORAGE, EM NO.
REV. 78	11/10/67	EM	REVISED LIGHTING IN TIRE STORAGE, EM NO.
REV. 79	11/10/67	EM	REVISED LIGHTING IN TIRE STORAGE, EM NO.
REV. 80	11/10/67	EM	REVISED LIGHTING IN TIRE STORAGE, EM NO.
REV. 81	11/10/67	EM	REVISED LIGHTING IN TIRE STORAGE, EM NO.
REV. 82	11/10/67	EM	REVISED LIGHTING IN TIRE STORAGE, EM NO.
REV. 83	11/10/67	EM	REVISED LIGHTING IN TIRE STORAGE, EM NO.
REV. 84	11/10/67	EM	REVISED LIGHTING IN TIRE STORAGE, EM NO.
REV. 85	11/10/67	EM	REVISED LIGHTING IN TIRE STORAGE, EM NO.
REV. 86	11/10/67	EM	REVISED LIGHTING IN TIRE STORAGE, EM NO.
REV. 87	11/10/67	EM	REVISED LIGHTING IN TIRE STORAGE, EM NO.
REV. 88	11/10/67	EM	REVISED LIGHTING IN TIRE STORAGE, EM NO.
REV. 89	11/10/67	EM	REVISED LIGHTING IN TIRE STORAGE, EM NO.
REV. 90	11/10/67	EM	REVISED LIGHTING IN TIRE STORAGE, EM NO.
REV. 91	11/10/67	EM	REVISED LIGHTING IN TIRE STORAGE, EM NO.
REV. 92	11/10/67	EM	REVISED LIGHTING IN TIRE STORAGE, EM NO.
REV. 93	11/10/67	EM	REVISED LIGHTING IN TIRE STORAGE, EM NO.
REV. 94	11/10/67	EM	REVISED LIGHTING IN TIRE STORAGE, EM NO.
REV. 95	11/10/67	EM	REVISED LIGHTING IN TIRE STORAGE, EM NO.
REV. 96	11/10/67	EM	REVISED LIGHTING IN TIRE STORAGE, EM NO.
REV. 97	11/10/67	EM	REVISED LIGHTING IN TIRE STORAGE, EM NO.
REV. 98	11/10/67	EM	REVISED LIGHTING IN TIRE STORAGE, EM NO.
REV. 99	11/10/67	EM	REVISED LIGHTING IN TIRE STORAGE, EM NO.
REV. 100	11/10/67	EM	REVISED LIGHTING IN TIRE STORAGE, EM NO.



ISSUE OR REVISION

METROPOLITAN CORPORATION OF GREATER WINNIPEG
STREETS AND TRANSIT DIVISION

TRANSIT STORAGE AND SHOP FACILITIES

OVERHAUL & REPAIR SHOP FLOOR PLAN - LIGHTING

CONSULTING PROFESSIONAL ENGINEER
A. D. MARGISON AND ASSOCIATES LIMITED
1155 LESLIE STREET, DON MILLS, ONTARIO

ARCHITECTS
Walsman Ross + Blankstein Copp Gilmor Hanna
10 DONALD STREET, WINNIPEG, MANITOBA

APPROVED: [Signature] DATE: 21 July 1967

CHECKED: [Signature] DATE: 11/10/67

DESIGNED: [Signature] DATE: 11/10/67

DRAWING NO. 2185-706 ELECTRICAL

TRANSIT STORAGE
SHOP FACILITIES
2185-706
OVERHAUL & REPAIR SHOP FLOOR PLAN
LIGHTING