

ELECTRIC BASEBOARD HEATER SCHEDULE						
MARK	LOCATION	MANUFACTURER	MODEL	ELECTRICAL	CAPACITY (kW)	REMARKS
BH-1 & 2	LOCKERS & CORRIDOR	OUELLET	OFM1502	120 V/1 Ph	1.5	HEAVY DUTY ELECTRIC 275 W/ft DENSITY c/w WALL MOUNTED THERMOSTAT CONTROL
BH-3	SHOWER	OUELLET	OFM1002	120 V/1 Ph	1.0	HEAVY DUTY ELECTRIC 275 W/ft DENSITY c/w WALL MOUNTED THERMOSTAT CONTROL

ELECTRIC WATER HEATER SCHEDULE						
MARK	MANUFACTURER	MODEL	ELECTRICAL	INPUT (kW)	CAPACITY (L)	REMARKS
HWH-1	A O SMITH	DRE-80	208V/3Ph	9	302	

PACKAGED TERMINAL AIR CONDITIONER UNIT SCHEDULE									
MARK	MFR	MODEL NO.	COILING		HEATING		ELEC. HEATING COIL - kW	VOLTAGE /PH	NOTES
			L/s (CFM)	L/s (CFM)	TOTAL COOLING	HEATING @ 8°C AMB.			
PTAC-1	ISLANDAIRE	EZ4207B	160 (340)	113 (240)	2.11 (7185)	2.05 (7000)	2.05	208V/1PH	1
PTAC-2	ISLANDAIRE	EZ4207B	160 (340)	113 (240)	2.11 (7185)	2.05 (7000)	2.95	208V/1PH	1

NOTES:
1. UNIT C/W WALL-MOUNTED PROGRAMMABLE THERMOSTAT WITH TWO STAGES OF HEATING, TWO STAGES OF COOLING

DUCT HEATER SCHEDULE										
MARK	MFR	MODEL	AIRFLOW		ZONES	ELECTRICAL RATINGS			NOTES	
			L/s	CFM		VOLTS	PHASE	KW		
DH-1	THERMOLEC	FC	266	563	HHW BLDG	600	3	15	1	

NOTES:
1. SCR CONTROLLED C/W AIR FLOW SWITCH AND DS600 SENSOR. SET SUPPLY AIR TEMPERATURE TO 10°C.

ELECTRIC UNIT HEATER SCHEDULE													
MARK	MFR	MODEL	AIR FLOW		HEATING OUTPUT		TEMP. RISE		ELECTRICAL				NOTES
			L/s	CFM	kW	MBH	°C	°F	MOTOR kW	MOTOR HP	VOLTS	PHASE	
UH-1 TO UH-4	OUELLET	OAS05036	330	700	5	17	13	23	0.02	0.03	600	3	1
FF-1	OUELLET	OAWH01502	-	-	1.5	5	-	-	-	-	120	1	1

NOTES:
1. C/W OTL101C WALL-MOUNTED THERMOSTAT

MINI SPLIT SYSTEM SCHEDULE												
MARK	LOCATIONS	SERVE	COOLING CAPACITY		HEATING CAPACITY		POWER			ACCEPTABLE PRODUCT		NOTES
			kW	MBH	kW	MBH	VOLT	PHASE	MCA	MFR	MODEL	
AC-1/CU-1	AS INDICATED	IT CLOSET	2.6	9.0	N/A	N/A	208	1	10.0	TOSHIBA/CARRIER	RAS-09EACV/EKCV-UL	1, 2

NOTES:
1. R-410A REFRIGERANT
2. LOW-AMBIENT OPERATION

FAN SCHEDULE									
MARK	MFR	MODEL	AIRFLOW	ESP	MOTOR	MOTOR	POWER		NOTES
			(CFM)	(in. WC)	(HP)	RPM	VOLT	PHASE	
SF-1	GREENHECK	SQ-140-VG	2000	0.5	3/4	1388	120	1	1
EF-1	GREENHECK	SQ-140-VG	2250	0.5	3/4	1388	120	1	1

NOTES:
1. C/W HANGING RODS AND VIBRATION ISOLATORS.

PLUMBING FIXTURES AND TRIM SCHEDULE						
MARK	DESCRIPTION	CONNECTION SIZE			REMARKS	
		DCW (mm)	DHW (mm)	DRAIN (mm)		
WC-1	WATER CLOSET: EQUAL TO AMERICAN STANDARD GLENWALL MODEL 2093.100 COMMERCIAL TOILET BOWL W/1.6 GPF MANUAL FLUSH TANK. SEAT: EQUAL TO AMERICAN STANDARD MODEL 5322.041.	13	N/A	76		
LAV-1	BASIN: EQUAL TO AMERICAN STANDARD LUCERNE MODEL 0356.421. FAUCET: EQUAL TO DELTA MODEL 227501.W/OFFSET OPEN GRID STRAINER	13	13	32		
SH-1	EQUAL TO ACORN 500ADA SERIES C/W DIVERter VALVE, 1/P BALANCING MIXING VALVE, 2.0 UPGPM HAND SHOWER	13	13	N/A		
SK-1	BASIN: EQUAL TO KINRED MODEL 051719743. FAUCET: EQUAL TO DELTA MODEL 21720-1HP B724	13	13	32		
SJ-1	BASIN: EQUAL TO AMERICAN STANDARD 3061.193 C/W WALL HANGER. FAUCET: EQUAL TO AMERICAN STANDARD MODEL 8354.112	13	13	38		
EEW-1	EMERGENCY EYE/FACE WASH: EQUAL TO HAWS MODEL 7360BT-7400BT. THERMOSTATIC MIXING VALVE: HAWS MODEL TWBS.EWE.	13	13	38		
HB-1	HOSE BIBB: EQUAL TO ZURN MODEL 195-BFP-9 SERIES 13MM. FASTENERS: ZURN MODEL 300 SERIES.	19	N/A	N/A		
WH-1	WALL HYDRANT: EQUAL TO ZURN MODEL 21320. WALL THICKNESS 270MM.	19	N/A	N/A		
FD-1	FLOOR DRAIN: EQUAL TO ZURN MODEL Z-221-VP 50MM.	N/A	N/A	N/A	AS INDICATED	

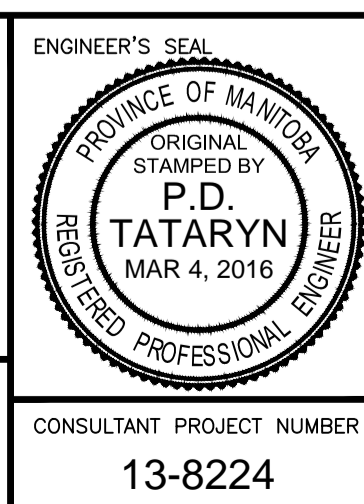
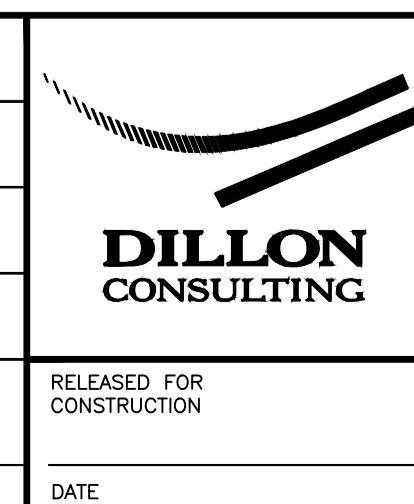
GRILLE, REGISTER, DIFFUSER & LOUVRE SCHEDULE			
MARK	MFR	MODEL NO.	REMARKS
SG-1	PRICE	520D/SDF/S/B12	
SD-1	PRICE	300x300/SCD/31/B12	
EG-1	PRICE	510ZD/SDF/S/B12	
EG-2	PRICE	80D/F/A/B12	
LV-1	PRICE	ZE439	C/W BIRD SCREEN

ENERGY RECOVERY VENTILATOR (Based on TEMPEFF)			
TAG:	ERV-1		
MODEL:	RGSP 300		
SUPPLY FAN			
AIR FLOW RATE (L/s / CFM):	60	127	
E.S.P. (Pa / in.WC):	125	0.50	
MOTOR SIZE (hp):	0.25		
EXHAUST FAN			
AIR FLOW RATE (L/s / CFM):	60	127	
E.S.P. (Pa / in.WC):	125	0.50	
MOTOR SIZE (hp):	0.25		
HEAT EXCHANGER (WINTER)			
TEMPERATURE EFFICIENCY (ACROSS UNIT) (%):	90.0		
O/A TEMP (°C / °F):	-35.0	-31	
E/A TEMP (°C / °F):	21.1	70	
S/A TEMP (°C / °F):	15.5	59.9	
HEAT EXCHANGER (SUMMER)			
TEMPERATURE EFFICIENCY (%):	73.3		
O/A TEMP DB (°C / °F):	30.0	86	
O/A TEMP WB (°C / °F):	22.8	73	
E/A TEMP DB (°C / °F):	23.9	75	
E/A TEMP WB (°C / °F):	16.9	62.5	
S/A TEMP DB (°C / °F):	25.5	77.9	
S/A TEMP WB (°C / °F):	21.5	70.7	
SUPPLY FILTER:	MERV 8		
PHYSICAL DATA			
LENGTH (mm / in.):	1,781	70.13	
WIDTH (mm / in.):	758.8	29.88	
HEIGHT (mm / in.):	257.2	10.13	
EST. OPERATING WT. (kg / lbs)	180	400	
ELECTRICAL DATA			
VOLTAGE/PHASE:	120 / 1		

NOTES:
1. C/W STAINLESS STEEL DRAIN PANS UNDER HEAT EXCHANGERS W/19mm NPT CONNECTIONS.



B.M. ELEV.	DESIGNED BY	PT		
	DRAWN BY	JVH		
	CHECKED BY	NDC		
	APPROVED BY	ARR		
2	ISSUED FOR ADDENDUM#1	16/03/14 ARR		
1	ISSUED FOR TENDER	16/03/04 ARR		
NO.	REVISIONS	DATE	BY	DATE



THE CITY OF WINNIPEG
PUBLIC WORKS DEPARTMENT

4R WINNIPEG DEPOT
PACIFIC AVENUE

HHWE WASTE BUILDING
MECHANICAL SCHEDULES

CITY DRAWING NUMBER
1-0851A-M0002-001

SHEET 32 OF 43

CONSULTANT DRAWING NUMBER
M-2

CONSULTANT PROJECT NUMBER
13-8224

METRIC
WHOLE NUMBERS INDICATE MILLIMETRES
DECIMALIZED NUMBERS INDICATE METRES