

- ### LEGEND
- DUPLEX RECEPTACLE
 - WP DENOTES WEATHER PROOF
 - GFI GROUND FAULT INTERRUPTER CIRCUIT
 - GFI DUPLEX RECEPTACLE
 - IPLC IPLC DUPLEX RECEPTACLE ASSEMBLY IN FD BOX
 - 208V 208 VOLT 1 PHASE RECEPTACLE AMPERE RATING AS SHOWN
 - 208V 208 VOLT 3 PHASE RECEPTACLE AMPERE RATING AS SHOWN
 - AUTOMATIC DOOR OPERATOR
 - DISCONNECT SWITCH
 - MOTOR OPERATOR
 - MOTOR
 - JUNCTION BOX
 - ASSISTED DOOR OPENER
 - ELECTRIC BASEBOARD HEATER
 - LINE VOLTAGE THERMOSTAT

- ### NOTES
1. ELECTRICAL EQUIPMENT MOUNTING BACKBOARD 21mm THICK PLYWOOD. PAINTED 2 COATS ENAMEL WHITE PAINT. TYPICAL FOR ALL MAIN DISTRIBUTION EQUIPMENT BACKBOARDS.
 2. MOUNT ROTARY DISCONNECTS ON UNDERSIDE OF CEILING. TYPICAL FOR ALL UNIT HEATERS.
 3. PROVIDE RELAY BOX TO ACTIVATE VENTILATION SYSTEM IN "OCCUPIED" MODE WHEN EITHER LIGHT SWITCH IS ON.
 4. PROVIDE RELAY BOX, MOUNT IN CEILING SPACE, TO ACTIVATE VENTILATION SYSTEM IN "OCCUPIED" MODE WHEN EITHER LIGHT SWITCH IS ON.

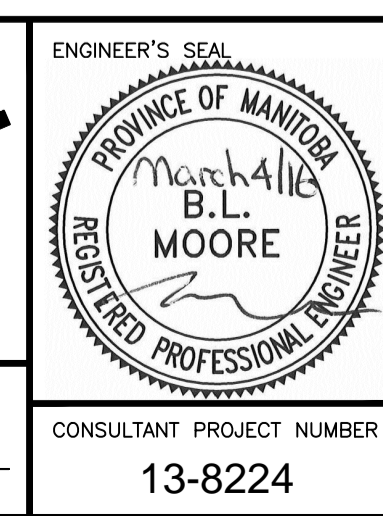
HHW EWASTE BUILDING - POWER
1:50

METRIC
WHOLE NUMBERS INDICATE MILLIMETRES
DECIMALIZED NUMBERS INDICATE METRES

C:\projects\waste\working_directory\active\4099\40245764\138224-02-ELEC-CO002.dwg



| | | |
|---------------------|-------------|----------|
| B.M. ELEV. | DESIGNED BY | BLM |
| | DRAWN BY | SCK |
| | CHECKED BY | BLM |
| | APPROVED BY | ARR |
| | HOR. SCALE | AS NOTED |
| | VERTICAL | |
| 1 ISSUED FOR TENDER | 16/03/04 | ARR |
| NO. REVISIONS | DATE | BY |
| | | |



| | |
|-------------------------------------|----------------------------------------------------|
| | |
| 4R WINNIPEG DEPOT PACIFIC AVENUE | CITY DRAWING NUMBER 1-0851A-E0002-001 |
| HHW EWASTE BUILDING POWER PLAN | SHEET 34 OF 43 CONSULTANT DRAWING NUMBER E-2 |