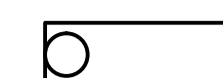
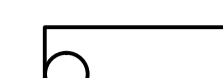

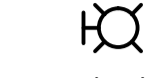
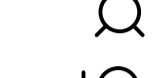


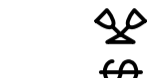
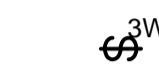
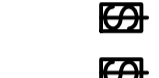
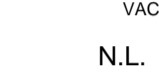


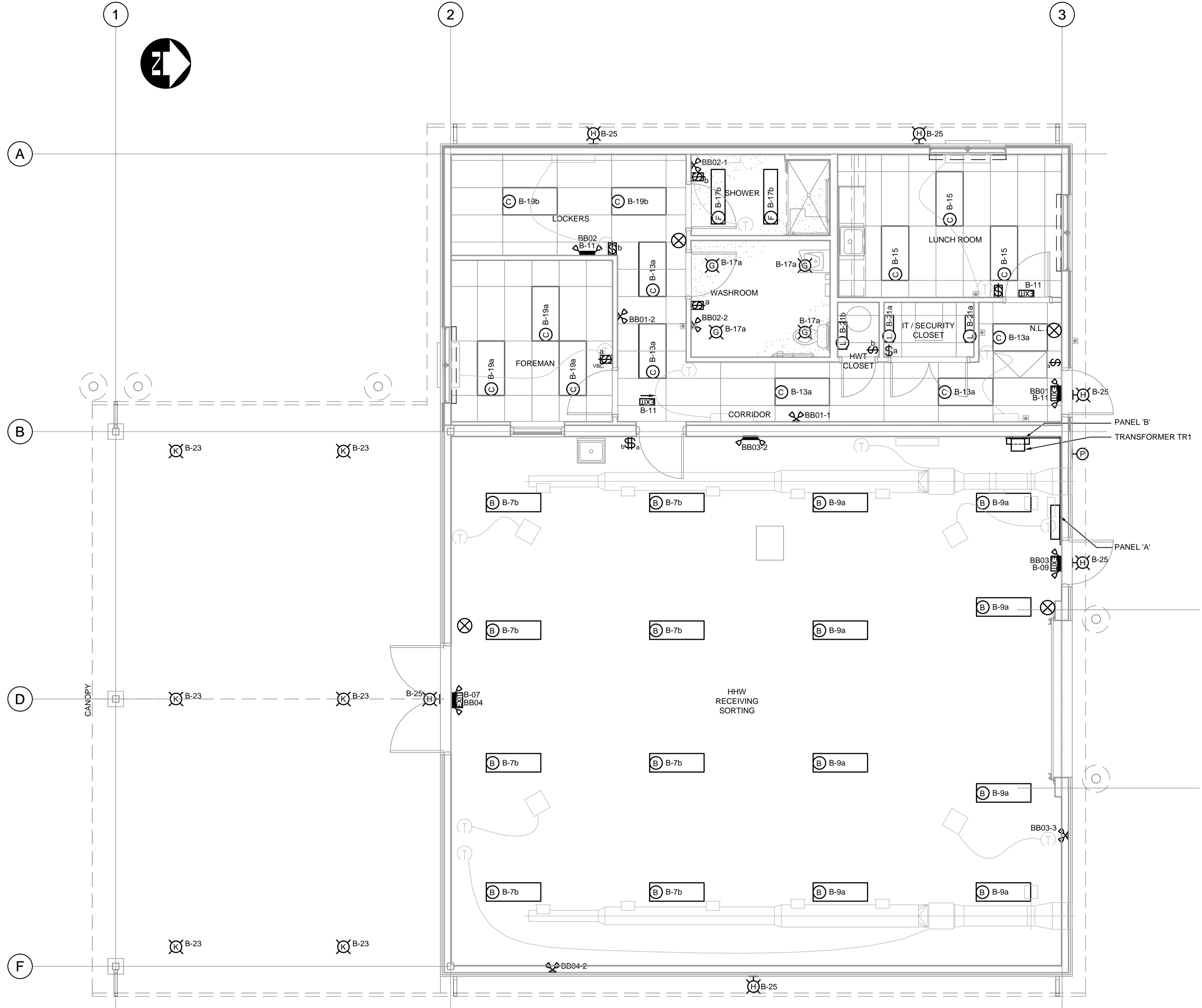


LEGEND

-  3 LAMP FLUORESCENT LIGHT FIXTURE SURFACE OR PENDANT MOUNTED
-  2 LAMP FLUORESCENT LIGHT FIXTURE T-BAR RECESSED MOUNTED
-  600mm (24") WALL MOUNTED FLUORESCENT LIGHT FIXTURE
-  WALL PACK LIGHT FIXTURE
-  CEILING MOUNTED POT LIGHT
-  PHOTOCELL
-  COMBINATION EXIT SIGN C/W EMERGENCY LTG. LAMPS AND BATTERY UNIT
-  EXIT SIGN
-  REMOTE MTD. DUAL EMERGENCY LAMPS
-  SPST WALL SWITCH
-  3 WAY WALL SWITCH
-  OCCUPANCY SENSOR WALL SWITCH
-  VACANCY SENSOR WALL SWITCH
- N.L. NIGHT LIGHT

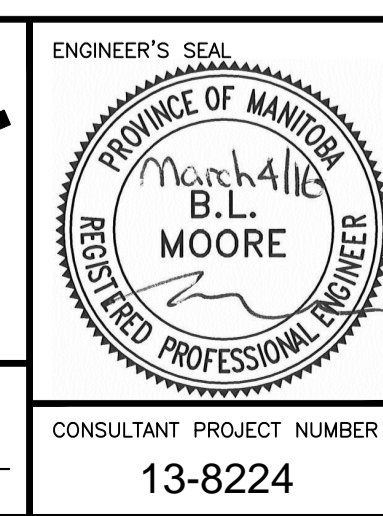


| LIGHTING FIXTURE SCHEDULE | | | |
|---------------------------|--|---|--------------------------|
| TYPE | DESCRIPTION | MANUFACTURER | LAMP |
| A | OVF-40-P-3-D OUTDOOR POLE MOUNTED AREA FLOOD LIGHT, 347 VOLT LUMINAIRE | MCGRAW-EDISON OVF-40-P-3-D | MH |
| B | VAPOURTIGHT, CORROSION RESISTANT 3 LAMP, FLUORESCENT | COOPER LIGHTING CAT. No. VT3-332DR-UNV-EB81-WL-SSL OR APPROVED EQUAL | 28W T8 (46') |
| C | RT5SX - 28W, 2-LAMP, FLUORESCENT FIXTURE, ENERGY EFFICIENT, RUGGED, STEEL REFLECTOR WITH EMBOSSED FACETS, HOUSING FORMED FROM COLD-ROLLED STEEL, RECESSED, TWO-PIECE REFRACTIVE SYSTEM, C/W HIGHLY EFFICIENT PROGRAM-START ELECTRONIC BALLAST, CLASS P, THERMALLY PROTECTED. | LITHONIA LIGHTING CAT. No. 2RT5SX-28T5-MVOLT-GEB95-LPM835P OR APPROVED EQUAL | 28W T5 (46') |
| D | 2 - 14 inch T5 FLUORESCENT LAMPS IN 600X600mm RECESSED FLUORESCENT FIXTURE SUITABLE FOR INSTALLATION IN STANDARD LAY-IN CEILING TILE CONSTRUCTION | LITHONIA LIGHTING CAT. No. 2RT5S-14T5-MVOLT-GEB115-LP835 OR APPROVED EQUAL | 14W T5 (22') |
| F | COOPER METALUX VAPOURITITE | COOPER LIGHTING VT3-232DR-UNV-EB81-WL-SSL | T8 |
| G | LITHONIA LIGHTING LED RECESSED DOWNLIGHTING 4" BAFFLE LED MODULE, MATTE WHITE | 4BEMW LED 30K 120V L3LED T24 | 10.3W 570L |
| H | 21W LED OUTDOOR LED FLOOD SERIES, 120V LIGHTING FIXTURE, DIE CAST ALUMINUM CONSTRUCTION, POWDER COAT BRONZE FINISH, WALL MOUNT ABOVE DOOR, COMPLETE WITH PHOTOCELL CONTROL. | COOPER LIGHTING ALL PRO CAT. No. F-S-S1530L-PC-ES OR APPROVED EQUAL | 21W LED |
| K | LED CANOPY LIGHT, 20 LEDS, 4000K, TYPE V C/W PIR MOTION / AMBIENT | LITHONIA LIGHTING DSXC LED 20C 700 40K T5R PIR DWHXD | |
| L | WALL MOUNT 600mm LONG #12 PATTERN ACRYLIC LENS C/W 2 14W T5 FLUORESCENT LAMPS | LITHONIA LIGHTING WC-2-14T5-A12-120-GEB10IS OR APPROVED EQUAL | 2 - T5 14 W FLUOR. |
| EMERG. LIGHT | EMERGENCY LIGHT FIXTURE WITH 2 LED HEADS, WHITE ENCLOSURE, WITH 120V INPUT LINE CORD. | COOPER CAT. No. RCS-1-B-2-LED-2 OR APPROVED EQUAL | |

HHW EWASTE BUILDING - LIGHTING
1:50



| | | |
|---------------------|-------------|----------|
| B.M. ELEV. | DESIGNED BY | BLM |
| | DRAWN BY | SCK |
| | CHECKED BY | BLM |
| | APPROVED BY | ARR |
| | HOR. SCALE | AS NOTED |
| | VERTICAL | |
| 1 ISSUED FOR TENDER | 16/03/04 | ARR |
| NO. REVISIONS | DATE | BY |



THE CITY OF WINNIPEG
PUBLIC WORKS DEPARTMENT

4R WINNIPEG DEPOT
PACIFIC AVENUE

HHW EWASTE BUILDING LIGHTING PLAN

CITY DRAWING NUMBER
1-0851A-E0003-001

SHEET 35 OF 43

CONSULTANT DRAWING NUMBER
E-3

METRIC
WHOLE NUMBERS INDICATE MILLIMETRES
DECIMALIZED NUMBERS INDICATE METRES

C:\projects\win\working_directory\active\4099\40245764\138224-02-ELEC-CO003.dwg