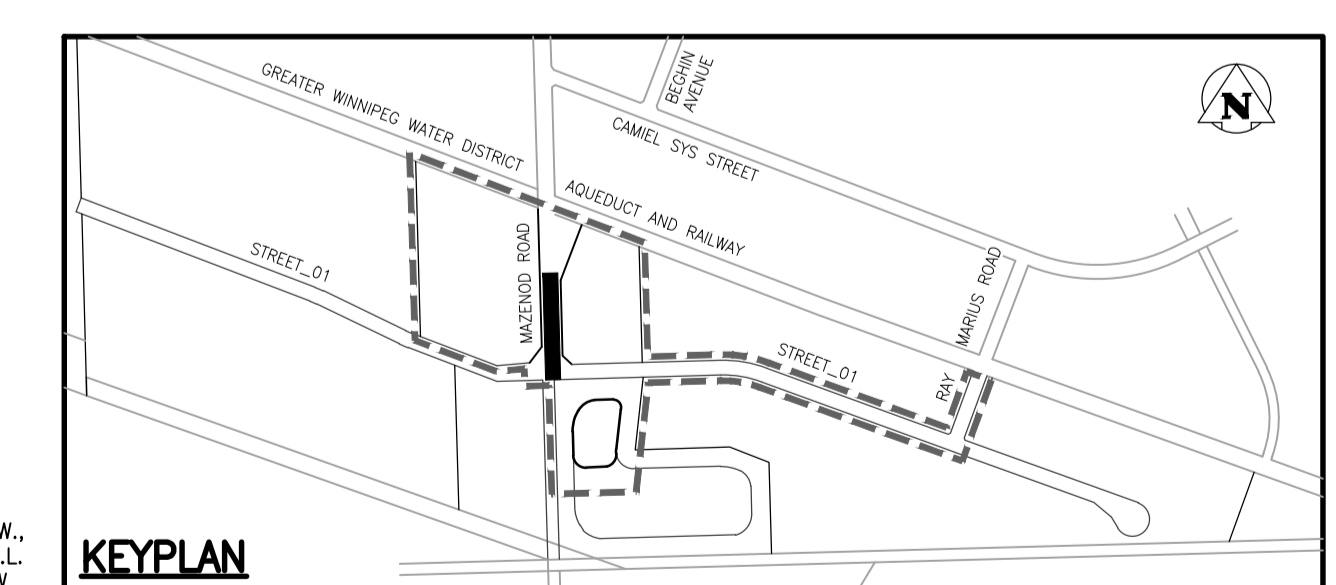
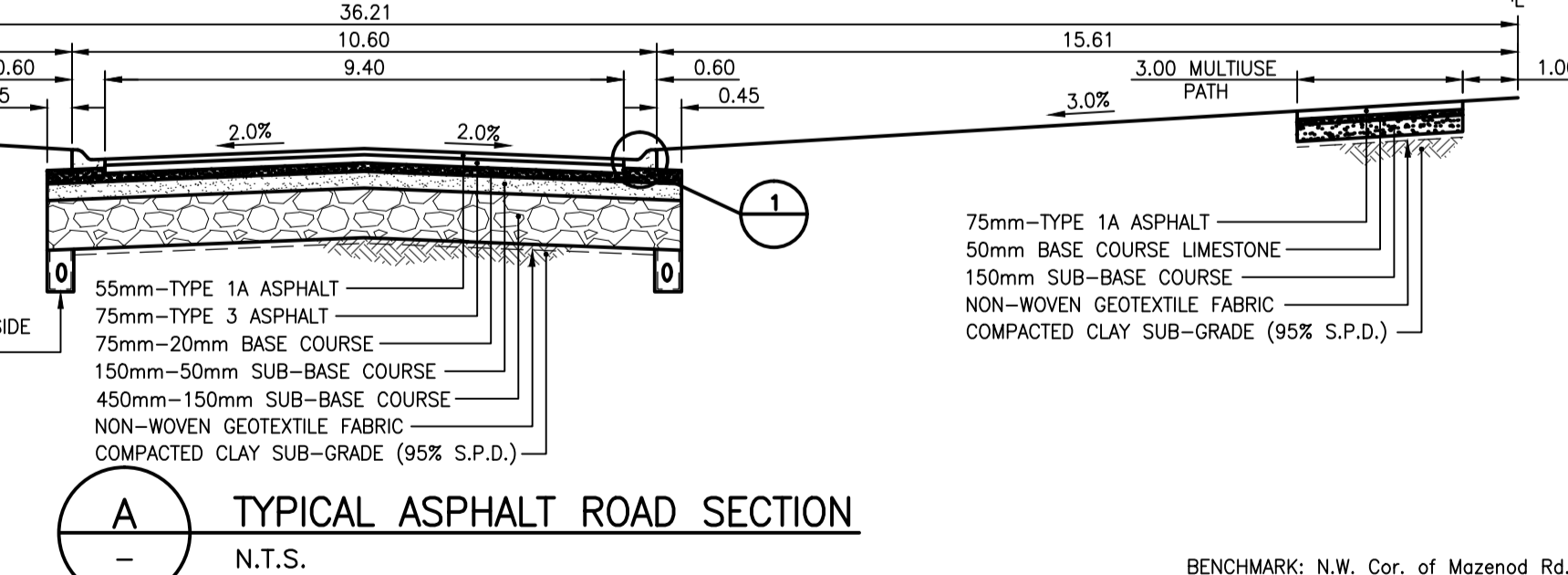
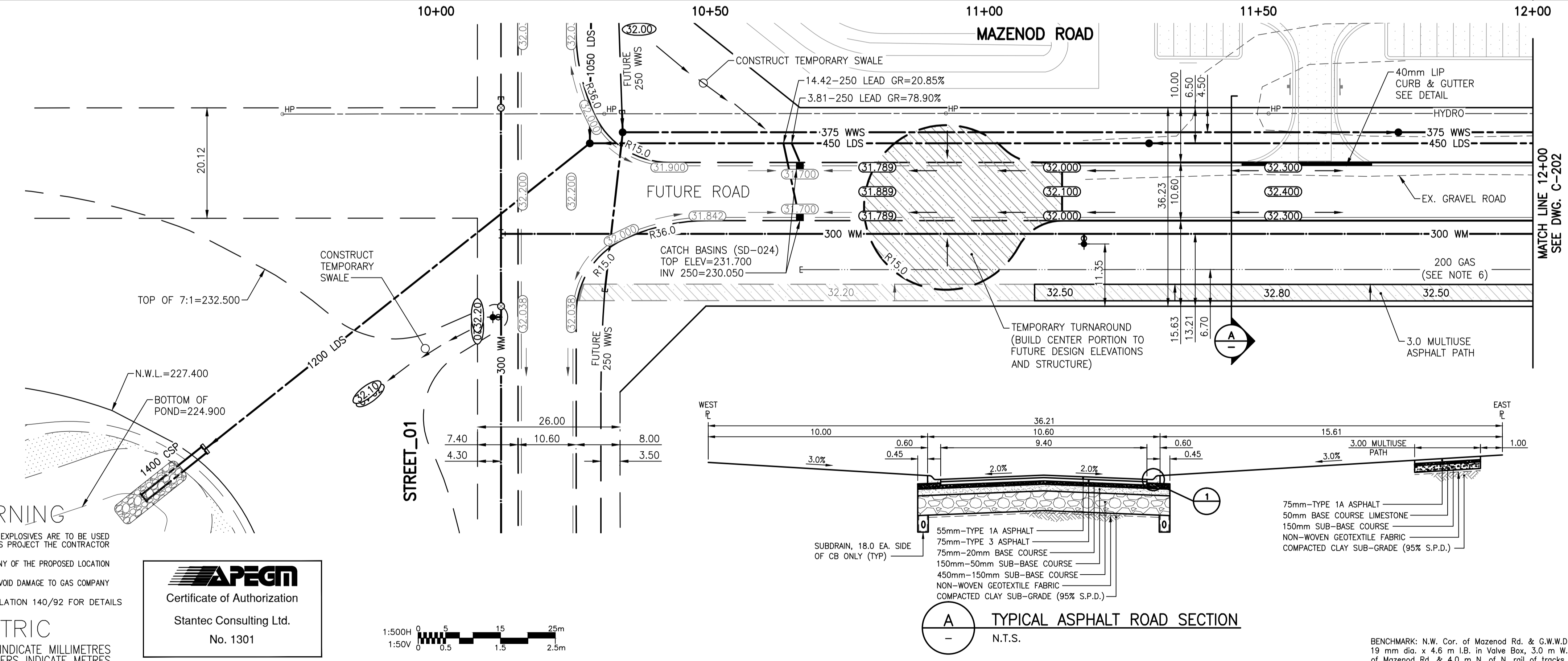
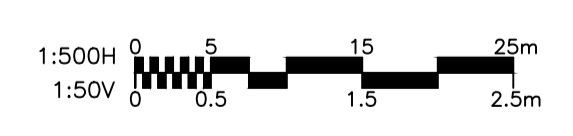


- NOTES:
- ALL INTERSECTION RADIUS ARE 7.50m AND ALL LANE RADIUS ARE 4.50m UNLESS NOTED OTHERWISE.
  - CHAINAGES SHOWN ARE ALONG CENTERLINE OF ROAD.
  - SUBDRAINS 18.00m EACH SIDE OF CATCH BASINS (SD-245).
  - ALL PIPE UNDER EXISTING AND FUTURE PAVEMENT ARE INSTALLED BY TRENCHLESS METHODS.
  - ALL LONG ASSEMBLY HYDRANTS (SD-006) ALL SHORT ASSEMBLY HYDRANTS (SD-007).
  - THE 200 GAS MAIN SHOWN IS THE PROPOSED MAIN TO BE INSTALLED IN APPROXIMATELY LATE JUNE 2016 BY MANITOBA HYDRO.



X:\1168\active\11680935\1\0300\_drawing\0302\_sheets\sheet\_02\_civil\phase\_2-stage\_1\09351c-201-846.dwg 2015/07/11 12:27 PM P.J.S. rmls, jordan

WARNING  
IF POWER EQUIPMENT OR EXPLOSIVES ARE TO BE USED FOR EXCAVATION ON THIS PROJECT THE CONTRACTOR MUST:  
1) NOTIFY THE GAS COMPANY OF THE PROPOSED LOCATION OF EXCAVATION.  
2) TAKE PRECAUTION TO AVOID DAMAGE TO GAS COMPANY INSTALLATIONS.  
SEE PROVINCIAL REGULATION 140/92 FOR DETAILS



| 150 WM |                     | 150 WM |                | 150 WM |                      | 150 WM |                |
|--------|---------------------|--------|----------------|--------|----------------------|--------|----------------|
| +      | WATERMAIN           | +      | HYDRO          | +      | WATERMAIN            | +      | HYDRO          |
| +      | HYDRANT             | +      | M.T.S.         | +      | HYDRANT VALVE        | +      | M.T.S.         |
| +      | VALVE               | +      | CONCRETE       | +      | LAND DRAINAGE SEWER  | +      | CONCRETE       |
| +      | LAND DRAINAGE SEWER | +      | ASPHALT        | +      | WASTE WATER SEWER    | +      | ASPHALT        |
| +      | WASTE WATER SEWER   | +      | SIDEWALK       | +      | PROPERTY LINE        | +      | SIDEWALK       |
| +      | MANHOLE             | +      | PROPERTY LINE  | +      | NORTH OR WEST GUTTER | +      | PROPERTY LINE  |
| +      | CATCH BASIN         | +      | SURVEY BAR     | +      | SOUTH OR EAST GUTTER | +      | SURVEY BAR     |
| +      | CURB INLET          | +      | DITCH          | +      | NORTH OR WEST R      | +      | DITCH          |
| +      | JUNCTIONS           | +      | ROAD ELEVATION | +      | SOUTH OR EAST R      | +      | ROAD ELEVATION |
| +      | CULVERT             | +      |                | +      | NORTH OR WEST DITCH  | +      |                |
| +      | GAS                 | +      |                | +      | SOUTH OR EAST DITCH  | +      |                |
| +      | EXISTING            | +      | LEGEND-PLAN    | +      | EXISTING             | +      | LEGEND-PLAN    |
| +      | PROPOSED            | +      | EXISTING       | +      | PROPOSED             | +      | EXISTING       |
| +      | PROPOSED            | +      | PROPOSED       | +      | PROPOSED             | +      | PROPOSED       |

LOCATION APPROVED UNDERGROUND STRUCTURES

SUPV. U/G STRUCTURES COMMITTEE

NOTE:  
LOCATION OF UNDERGROUND STRUCTURES AS SHOWN ARE BASED ON THE BEST INFORMATION AVAILABLE BUT NO GUARANTEE IS GIVEN THAT ALL EXISTING UTILITIES ARE SHOWN OR THAT THE GIVEN LOCATIONS ARE EXACT. CONFIRMATION OF EXISTENCE AND EXACT LOCATION OF ALL SERVICES MUST BE OBTAINED FROM THE INDIVIDUAL UTILITIES BEFORE PROCEEDING WITH CONSTRUCTION.

|     |           |          |    |      |              |
|-----|-----------|----------|----|------|--------------|
| NO. | REVISIONS | YY.MM.DD | BY | DATE | 2015 .08 .10 |
|-----|-----------|----------|----|------|--------------|

**Stantec**  
500 - 311 Portage Avenue, Winnipeg M8 Canada R3B 2B9  
Tel. 204.489.5900 Fax. 204.453.9012 www.stantec.com

DESIGNED BY: P.J.S. CHECKED BY: D.P.M.  
DRAWN BY: L.D. APPROVED BY: P.J.S.

HOR. SCALE: 1:500  
VERTICAL: 1:50

RELEASED FOR CONSTRUCTION: DATE

CONSULTANT DRAWING NO. C-201

ENGINEER'S SEAL: P.J. SUNDERLAND REGISTERED PROFESSIONAL ENGINEER

THE CITY OF WINNIPEG

Winnipeg

ST. BONIFACE INDUSTRIAL PARK - PHASE 2 - STAGE 1 6 OF 15

MAZENOD ROAD  
STREET\_01 TO  
175m N OF STREET\_01

SHEET OF 15  
CAD FILE DRAWING NUMBER 09351C-201-846.DWG  
CITY DRAWING NUMBER