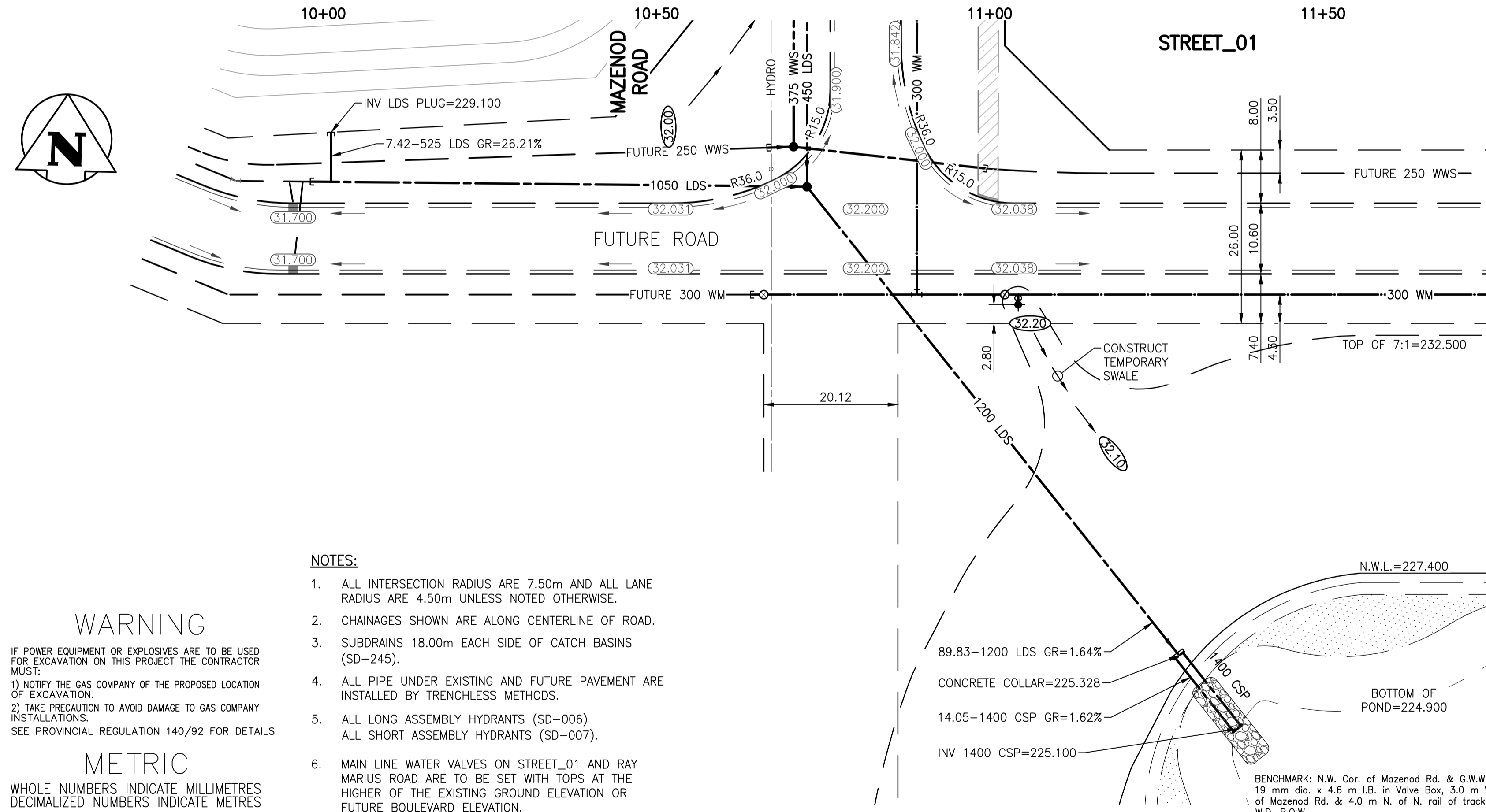


MATCH LINE 11+75



MATCH LINE 11+75
SEE DWG. C-205

- NOTES:**
1. ALL INTERSECTION RADIUS ARE 7.50m AND ALL LANE RADIUS ARE 4.50m UNLESS NOTED OTHERWISE.
 2. CHAINAGES SHOWN ARE ALONG CENTERLINE OF ROAD.
 3. SUBDRAINS 18.00m EACH SIDE OF CATCH BASINS (SD-245).
 4. ALL PIPE UNDER EXISTING AND FUTURE PAVEMENT ARE INSTALLED BY TRENCHLESS METHODS.
 5. ALL LONG ASSEMBLY HYDRANTS (SD-006) ALL SHORT ASSEMBLY HYDRANTS (SD-007).
 6. MAIN LINE WATER VALVES ON STREET_01 AND RAY MARIUS ROAD ARE TO BE SET WITH TOPS AT THE HIGHER OF THE EXISTING GROUND ELEVATION OR FUTURE BOULEVARD ELEVATION.

WARNING
IF POWER EQUIPMENT OR EXPLOSIVES ARE TO BE USED FOR EXCAVATION ON THIS PROJECT THE CONTRACTOR MUST:
1) NOTIFY THE GAS COMPANY OF THE PROPOSED LOCATION OF EXCAVATION.
2) TAKE PRECAUTION TO AVOID DAMAGE TO GAS COMPANY INSTALLATIONS.
SEE PROVINCIAL REGULATION 140/92 FOR DETAILS

METRIC
WHOLE NUMBERS INDICATE MILLIMETRES
DECIMALIZED NUMBERS INDICATE METRES

150 WM		150 WWS		HYDRO		150 WM		150 WWS	
+	WATERMAIN	+	WATERMAIN	---	HYDRO	+	WATERMAIN	+	WATERMAIN
+	HYDRANT	+	HYDRANT	---	M.T.S.	+	HYDRANT VALVE	+	HYDRANT VALVE
+	VALVE	+	VALVE	---	CONCRETE	+	LAND DRAINAGE SEWER	+	LAND DRAINAGE SEWER
+	LAND DRAINAGE SEWER	+	LAND DRAINAGE SEWER	---	ASPHALT	+	WASTE WATER SEWER	+	WASTE WATER SEWER
+	WASTE WATER SEWER	+	WASTE WATER SEWER	---	SIDEWALK	+	WASTE WATER SEWER	+	WASTE WATER SEWER
+	MANHOLE	+	MANHOLE	---	PROPERTY LINE	+	WASTE WATER SEWER	+	WASTE WATER SEWER
+	CATCH BASIN	+	CATCH BASIN	---	SURVEY BAR	+	WASTE WATER SEWER	+	WASTE WATER SEWER
+	CURB INLET	+	CURB INLET	---	DITCH	+	WASTE WATER SEWER	+	WASTE WATER SEWER
+	JUNCTIONS	+	JUNCTIONS	---	ROAD ELEVATION	+	WASTE WATER SEWER	+	WASTE WATER SEWER
+	CULVERT	+	CULVERT	---	ROAD ELEVATION	+	WASTE WATER SEWER	+	WASTE WATER SEWER
+	GAS	+	GAS	---	ROAD ELEVATION	+	WASTE WATER SEWER	+	WASTE WATER SEWER
+	EXISTING	+	PROPOSED	---	EXISTING	+	PROPOSED	+	PROPOSED

LOCATION APPROVED UNDERGROUND STRUCTURES

NO.	REVISIONS	YY.MM.DD	BY	DATE
2	ISSUED FOR CONSTRUCTION	16.01.04	P.J.S.	
1	SUBMITTED FOR CITY REVIEW	15.11.19	P.J.S.	

B.M. 32-005
ELEV. 231.677

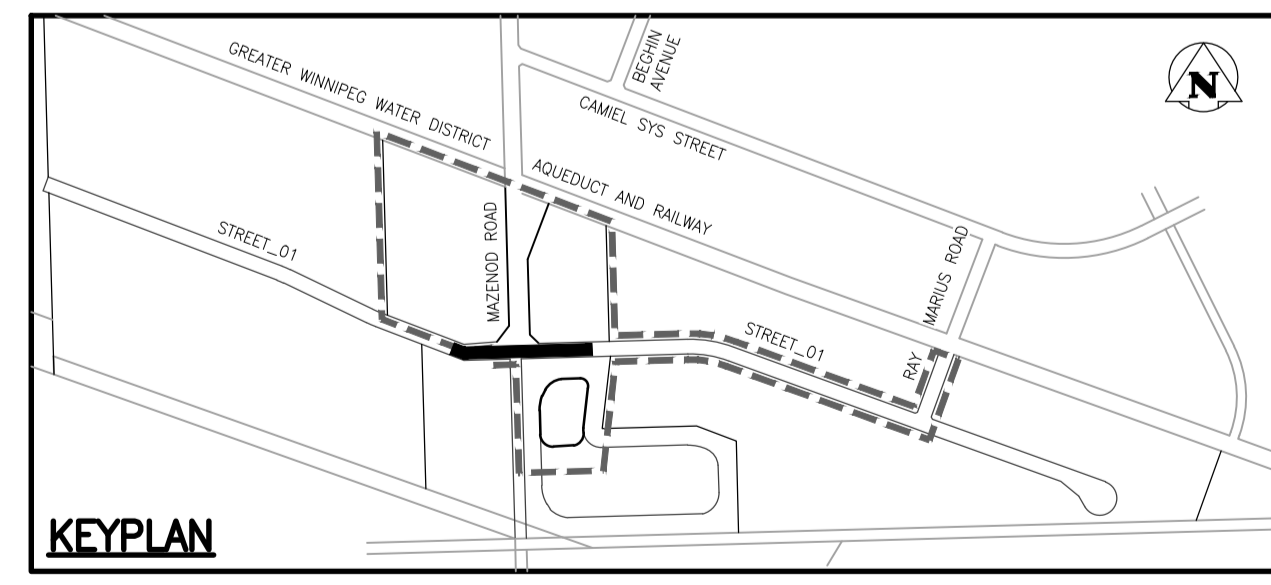
Stantec
500 - 311 Portage Avenue, Winnipeg MB Canada R3B 2B9
Tel. 204.489.5900 Fax. 204.453.9012 www.stantec.com

DESIGNED BY	P.J.S.	CHECKED BY	D.P.M.
DRAWN BY	L.D.	APPROVED BY	P.J.S.
HOR. SCALE:	1:500	RELEASED FOR CONSTRUCTION:	
VERTICAL:	1:50	DATE	2015 .08 .10

APEGM
Certificate of Authorization
Stantec Consulting Ltd.
No. 1301

PROVINCE OF MANITOBA
REGISTERED PROFESSIONAL ENGINEER
P.J. SUNDERLAND

CONSULTANT DRAWING NO.
C-204



THE CITY OF WINNIPEG
Winnipeg

ST. BONIFACE INDUSTRIAL PARK - PHASE 2 - STAGE 1

STREET_01
100m W OF MAZENOD ROAD TO
100m E OF MAZENOD ROAD

SHEET 9 OF 15
CAD FILE DRAWING NUMBER 09351C-204-846.DWG
CITY DRAWING NUMBER

X:\1168\Projects\11680935\10300_drawing\0302_sheets\files\02_civil\phase_2-stage_1\09351c-204-846.dwg
2015/07/11 11:52 PM P.J.S. - P.J.S.