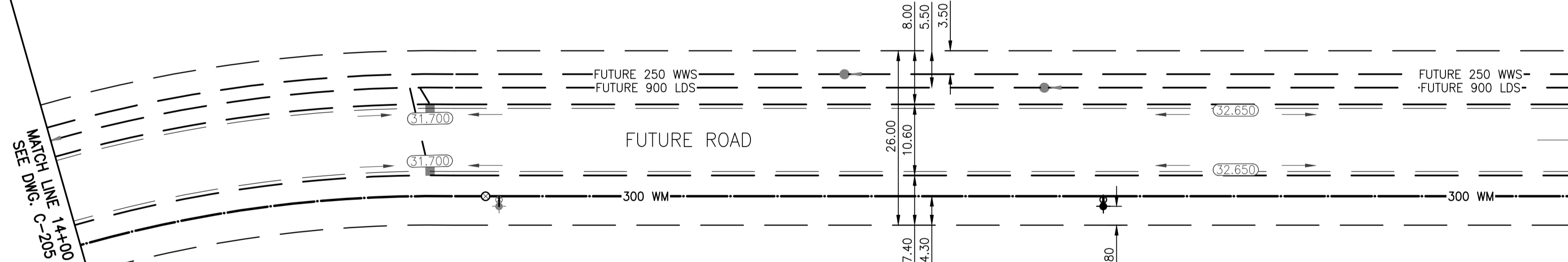


MATCH LINE C-205
SEE DWG. C-206

STREET_01



MATCH LINE 16+25
SEE DWG. C-207

NOTES:

1. ALL INTERSECTION RADIUS ARE 7.50m AND ALL LANE RADIUS ARE 4.50m UNLESS NOTED OTHERWISE.
2. CHAINAGES SHOWN ARE ALONG CENTERLINE OF ROAD.
3. SUBDRAINS 18.00m EACH SIDE OF CATCH BASINS (SD-245).
4. ALL PIPE UNDER EXISTING AND FUTURE PAVEMENT ARE INSTALLED BY TRENCHLESS METHODS.
5. ALL LONG ASSEMBLY HYDRANTS (SD-006) ALL SHORT ASSEMBLY HYDRANTS (SD-007).
6. MAIN LINE WATER VALVES ON STREET_01 AND RAY MARIUS ROAD ARE TO BE SET WITH TOPS AT THE HIGHER OF THE EXISTING GROUND ELEVATION OR FUTURE BOULEVARD ELEVATION.

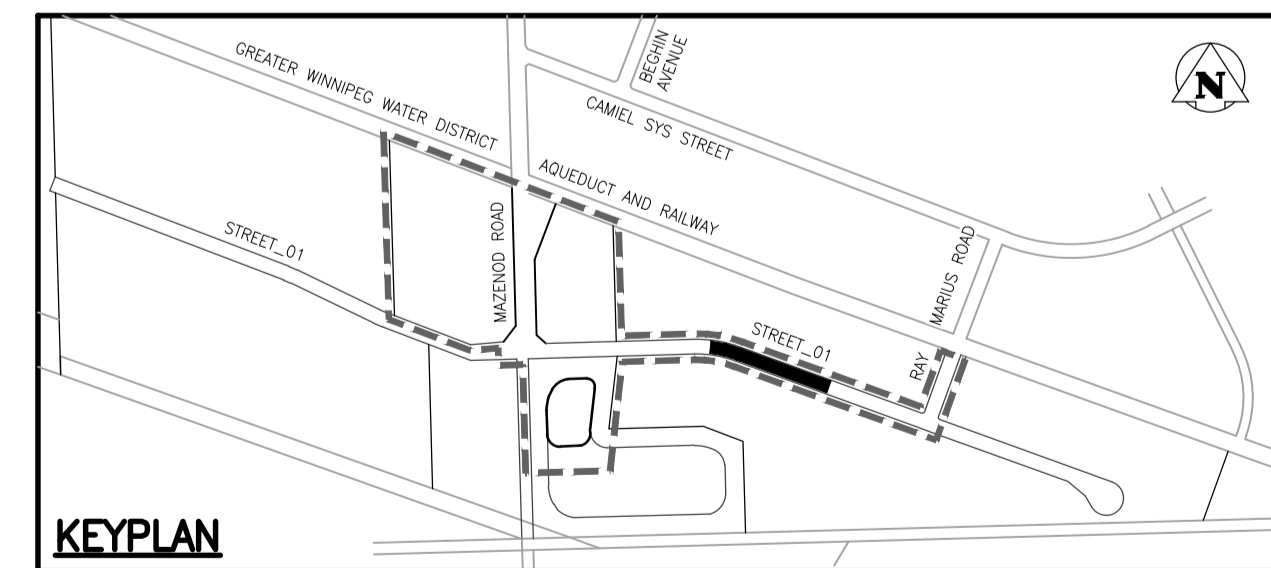
WARNING

IF POWER EQUIPMENT OR EXPLOSIVES ARE TO BE USED FOR EXCAVATION ON THIS PROJECT THE CONTRACTOR MUST:
 1) NOTIFY THE GAS COMPANY OF THE PROPOSED LOCATION OF EXCAVATION.
 2) TAKE PRECAUTION TO AVOID DAMAGE TO GAS COMPANY INSTALLATIONS.
 SEE PROVINCIAL REGULATION 140/92 FOR DETAILS

METRIC

WHOLE NUMBERS INDICATE MILLIMETRES
 DECIMALIZED NUMBERS INDICATE METRES

BENCHMARK: N.W. Cor. of Mazenod Rd. & G.W.W.D. R.O.W.,
 19 mm dia. x 4.6 m I.B. in Valve Box, 3.0 m W. of W.L.
 of Mazenod Rd. & 4.0 m N. of N. rail of tracks in G.W.
 W.D. R.O.W.



EXISTING	LEGEND-PLAN	PROPOSED	EXISTING	LEGEND-PLAN	PROPOSED	EXISTING	LEGEND-PROFILE	PROPOSED
(Symbol)	WATERMAIN	(Symbol)	(Symbol)	HYDRO	(Symbol)	(Symbol)	WATERMAIN	(Symbol)
(Symbol)	HYDRANT	(Symbol)	(Symbol)	M.T.S.	(Symbol)	(Symbol)	HYDRANT, VALVE	(Symbol)
(Symbol)	VALVE	(Symbol)	(Symbol)	CONCRETE	(Symbol)	(Symbol)	LAND DRAINAGE SEWER	(Symbol)
(Symbol)	LAND DRAINAGE SEWER	(Symbol)	(Symbol)	ASPHALT	(Symbol)	(Symbol)	WASTE WATER SEWER	(Symbol)
(Symbol)	WASTE WATER SEWER	(Symbol)	(Symbol)	SIDEWALK	(Symbol)	(Symbol)	@ PROFILE	(Symbol)
(Symbol)	MANHOLE	(Symbol)	(Symbol)	PROPERTY LINE	(Symbol)	(Symbol)	NORTH OR WEST GUTTER	(Symbol)
(Symbol)	CATCH BASIN	(Symbol)	(Symbol)	SURVEY BAR	(Symbol)	(Symbol)	SOUTH OR EAST GUTTER	(Symbol)
(Symbol)	CURB INLET	(Symbol)	(Symbol)	DITCH	(Symbol)	(Symbol)	NORTH OR WEST R.	(Symbol)
(Symbol)	JUNCTIONS	(Symbol)	(Symbol)	ROAD ELEVATION	(Symbol)	(Symbol)	SOUTH OR EAST R.	(Symbol)
(Symbol)	CULVERT	(Symbol)	(Symbol)			(Symbol)	NORTH OR WEST DITCH	(Symbol)
(Symbol)	GAS	(Symbol)	(Symbol)			(Symbol)	SOUTH OR EAST DITCH	(Symbol)

LOCATION APPROVED UNDERGROUND STRUCTURES

SUPV. U/G STRUCTURES COMMITTEE DATE

NOTE: LOCATION OF UNDERGROUND STRUCTURES AS SHOWN ARE BASED ON THE BEST INFORMATION AVAILABLE BUT NO GUARANTEE IS GIVEN THAT ALL EXISTING UTILITIES ARE SHOWN OR THAT THE GIVEN LOCATIONS ARE EXACT. CONFIRMATION OF EXISTENCE AND EXACT LOCATION OF ALL SERVICES MUST BE OBTAINED FROM THE INDIVIDUAL UTILITIES BEFORE PROCEEDING WITH CONSTRUCTION.

NO.	REVISIONS	YY.MM.DD	BY	DATE	2015 .08 .10
-----	-----------	----------	----	------	--------------

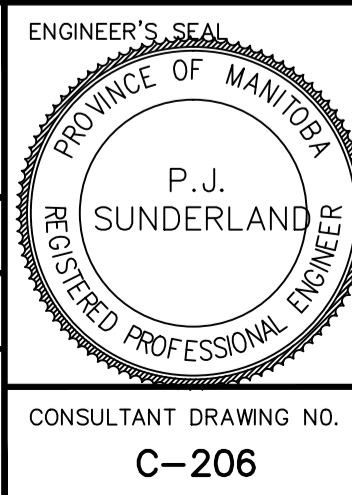
Stantec

500 - 311 Portage Avenue, Winnipeg MB Canada R3B 2B9
 Tel. 204.489.5900 Fax. 204.453.9012 www.stantec.com

DESIGNED BY	P.J.S.	CHECKED BY	D.P.M.
DRAWN BY	L.D.	APPROVED BY	P.J.S.

HOR. SCALE: 1:500
 VERTICAL: 1:50

RELEASER FOR CONSTRUCTION: DATE



THE CITY OF WINNIPEG

ST. BONIFACE INDUSTRIAL PARK - PHASE 2 - STAGE 1 11 OF 15

STREET_01

325m E OF MAZENOD ROAD TO
 550m E OF MAZENOD ROAD

SHEET 11 OF 15
 CAD FILE DRAWING NUMBER 09351C-204-846.DWG
 CITY DRAWING NUMBER

X:\1168\civ\03\0300_drawing\0302_sheet_files\02_civil\phase_2-stage_1_1\09351c-204-846.dwg
 2015/07/11 1:50 PM PM P.J.S. P.J.S.