

PANEL MOUNTING LOCATION	'A' SURFACE SERVICE ROOM	VOLTAGE MAIN BUS	120/240V-1PH-3W 200A	REMARKS	C/W 200A-2P MAIN C.B.
DESCRIPTION	BKR	CIRCUIT	BKR	DESCRIPTION	
EXTERIOR LIGHTING	15	1	2	FORCE FLOW HEATER	
LIGHTING	15	3	4		
H/C DOOR OPERATOR	15	5	6	FORCE FLOW HEATER	
H/C DOOR OPERATOR	15	7	8		
H/C DOOR OPERATOR	15	9	10	FORCE FLOW HEATER	
RECEPTACLES	15	11	12		
SC RECEPTACLE	15	13	14	FORCE FLOW HEATER	
WP GF RECEPTACLE	15	15	16		
HAND DRYER	20	17	18	FORCE FLOW HEATER	
HAND DRYER	20	19	20		
HAND DRYER	20	21	22	BASEBOARD HEATER	
SF-1, MOTORIZED DAMPER	15	23	24		
SP-1	20	25	26	SPACE	
SF-2	15	27	28	RELOCATED SHELTER CIRCUIT	
EF-1, MOTORIZED DAMPER	15	29	30	RELOCATED SHELTER CIRCUIT	
HWT-1	20	31	32	RELOCATED SHELTER CIRCUIT	
		33	34	RELOCATED SHELTER CIRCUIT	
EHC-1		35	36	SPARE	
#10 WIRE		37	38	SPARE	
EHC-2	15	39	40	SPARE	
		41	42	SPARE	

MOTOR SCHEDULE								
NO.	DESCRIPTION	LOCATION	VOLTAGE	HP/W/MCA	C.B.	COND.	STARTER	NOTES
EF-1	EXHAUST FAN	SERVICE CORRIDOR	120V-1PH	1.2 A	15A-1P	#12	MANUAL	1,2
SF-1	SUPPLY FAN	SERVICE CORRIDOR	120V-1PH	1.2 A	15A-1P	#12	MANUAL	1,2
SF-2	SUPPLY FAN	CRAWLSPACE	120V-1PH	1.42 A	15A-1P	#12	MANUAL	1,2
EHC-1	ELECTRIC HEATING COIL	SERVICE CORRIDOR	240V-1PH	4 KW	30A-2P	#10	-	1
EHC-2	ELECTRIC HEATING COIL	CRAWLSPACE	240V-1PH	2 KW	15A-2P	#12	-	1
MD(X2)	MOTORIZED DAMPER	SERVICE CORRIDOR	120V-1PH	FRAC.	15A-1P	#12	-	1
HWT-1	HOT WATER TANK	SERVICE CORRIDOR	240V-1PH	3 KW	20A-2P	#12	-	1
SP-1	SUMP PUMP	CRAWLSPACE	120V-1PH	1/3 HP	20A-1P	#12	MANUAL	1,2,3,4

SPECIFIC NOTES

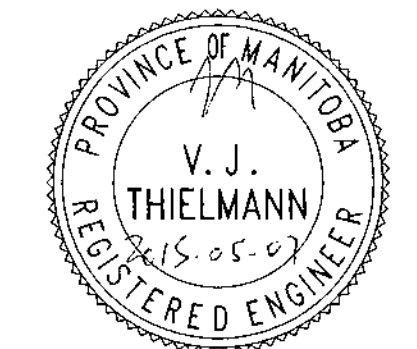
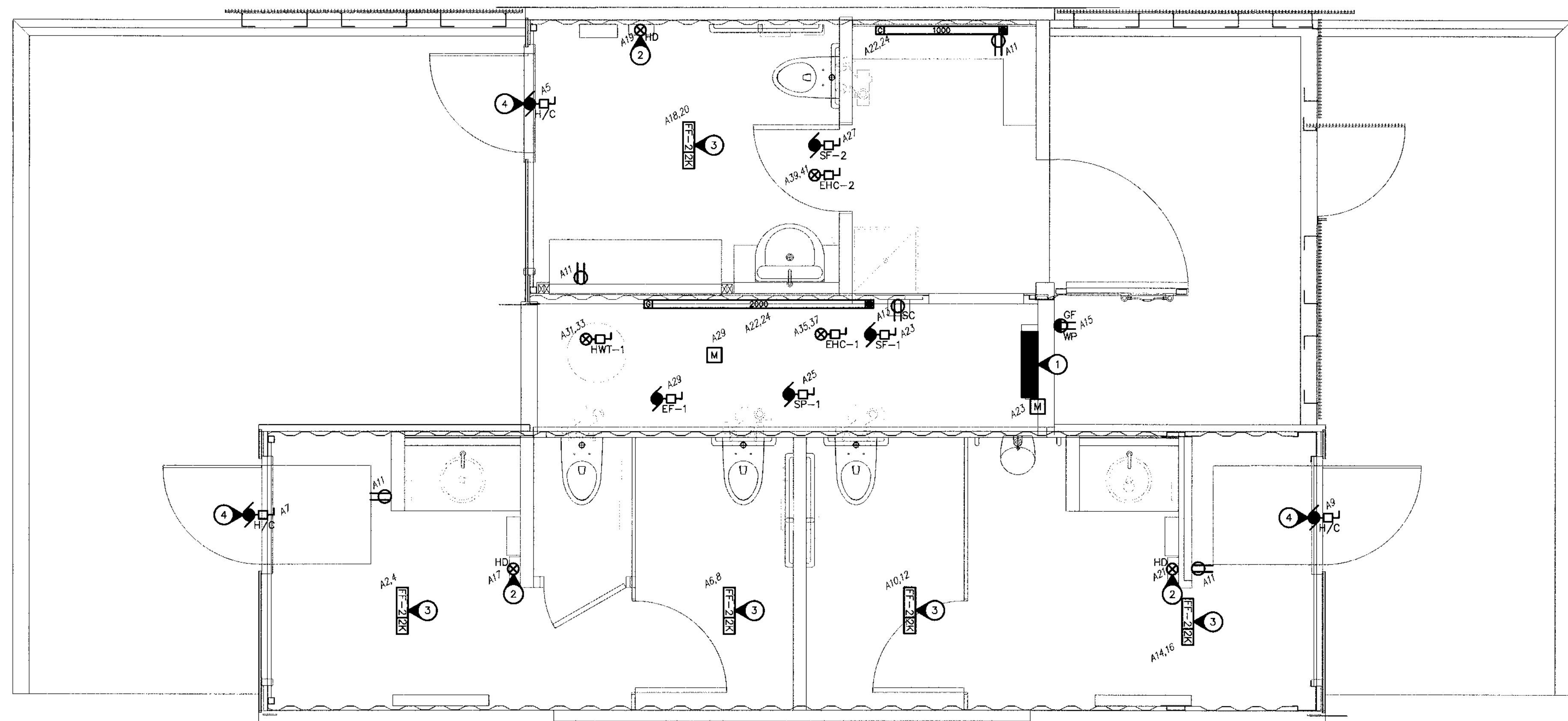
- WIRE AND CONNECT AS REQUIRED. REFER TO MECHANICAL.
- MANUAL STARTER BY DIV. 16.
- COORDINATE INSTALLATION OF PATHWAYS TO PIT FOR SUMP PUMP WIRING.
- WIRE ALL CONTROL ALARMS AS REQUIRED (SEE MECHANICAL).

GENERAL NOTES

- MANUAL STARTERS TO BE C/W OVERCURRENT PROTECTION.
- ALL DISCONNECT SWITCHES TO BE SUPPLIED BY DIV. 16.
- ELECTRICAL CONTRACTOR TO PROVIDE CIRCUIT BREAKERS AND WIRING ACCORDING TO THE FINAL NAMEPLATES OF ALL THE MECHANICAL EQUIPMENT.
- ALL LOW VOLTAGE CONTROL WIRING BY DIV. 15.
- ALL LINE VOLTAGE CONTROL WIRING BY DIV. 16 - REFER TO MECHANICAL SECTION. CO-ORDINATE EXACT REQUIREMENTS WITH DIV. 15.

Owner
City of Winnipeg
190 River Road, Winnipeg, MB

No.	Date	Revision Notes
1.	2015.04.10	Issued for 66% REVIEW
2.	2015.05.08	Issued For Construction



PEGM
Certificate of Authorization
Nova 3 Engineering Ltd.
No. 962 Date: 2015.05.07

This drawing must not be scaled. The contractors shall verify all dimensions and other data on site prior to commencement of work. Discrepancies, errors, and omissions are to be reported to the Architect prior to proceeding with the Work.

Drawings and specifications as instruments of service are the property of the Architect; the copyright in the same being reserved to him.

No reproduction or revision to these drawings may be made without the permission of the Architect and when made, must bear his name. All prints to be returned to the Architect upon request.

Project
St. Vital Park Washrooms

Drawing
ELECTRICAL - POWER LAYOUT

Drawn By
KC/AJT
Scale
AS NOTED
Date
APRIL 2015

Reviewed By
VJT
Drawing No.
E2.0
Project No.
1445
File No.
0

1
E2.0
ELECTRICAL - POWER LAYOUT
SCALE: 1:30

HEATING SCHEDULE						
TYPE	WATTS	VOLTAGE	DESCRIPTION	MANUFACTURER	CATALOGUE NO.	NOTES
C	1000	240	BASEBOARD	OUELLET	ODB100	1
G	2000	240	BASEBOARD	OUELLET	ODB200	1
FF-2	2000	240	FORCE FLOW	OUELLET	WALL: OACU02000 CEILING: OACPU2000	2

SPECIFIC HEATING NOTES:

- C/W BUILT-IN THERMOSTAT OR WIRED TO REMOTE THERMOSTAT AS SHOWN ON DRAWINGS.
- RECESSED UNLESS OTHERWISE INDICATED. C/W BUILT-IN THERMOSTAT UNLESS OTHERWISE INDICATED

GENERAL HEATING NOTES:

- VOLTAGE TO BE AS INDICATED ABOVE UNLESS OTHERWISE NOTED ON DRAWINGS.

SPECIFIC ELECTRICAL NOTES

- APPROXIMATE LOCATION OF NEW 200A-120/240V-1PH-3W PANEL 'A'.
- PROVIDE 12DV POWER SUPPLY FOR DYSON AIRBLADE HAND DRYER (120V-PH, 1.4KW) AS REQUIRED.
- CEILING MOUNTED FORCE FLOW HEATER.
- WIRE AND CONNECT HANDICAPPED DOOR OPERATOR AND ALL ASSOCIATED CONTROLS AS REQUIRED. CONFIRM REQUIREMENTS ON SITE.

NOVA 3 ENGINEERING LTD.
CONSULTING ENGINEERS
201-120 FORT STREET
WINNIPEG, MANITOBA R3C 1C7
WWW.NOVA3.CA
TEL.: (204) 943-6142
FAX.: (204) 942-1276
JN.: 35D55e
THIS DRAWING IS THE EXCLUSIVE PROPERTY OF NOVA 3 ENGINEERING LTD. AND MAY ONLY BE REPRODUCED WITH THE WRITTEN PERMISSION OF NOVA 3 ENGINEERING LTD.
THE CONCEPT AND DESIGN INCORPORATED INTO THIS DRAWING ARE BASED ON INFORMATION PROVIDED BY THE CLIENT AND OTHER RELATED SOURCES. PROFESSIONAL ENGINEER ACCEPTS NO RESPONSIBILITY FOR DRAWING AND DESIGN UNLESS DRAWING IS ACCOMPANIED BY ORIGINAL SEALED LETTER OF INTENT OR EQUIVALENT ACCEPTABLE FACSIMILE. PROFESSIONAL ENGINEER ACCEPTS NO RESPONSIBILITY FOR FINAL INSTALLATION CONFORMANCE WITHOUT ORIGINAL SEALED CERTIFICATE OF INSPECTION OR EQUIVALENT ACCEPTABLE FACSIMILE.