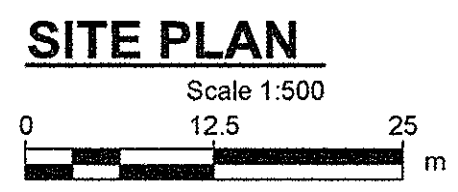
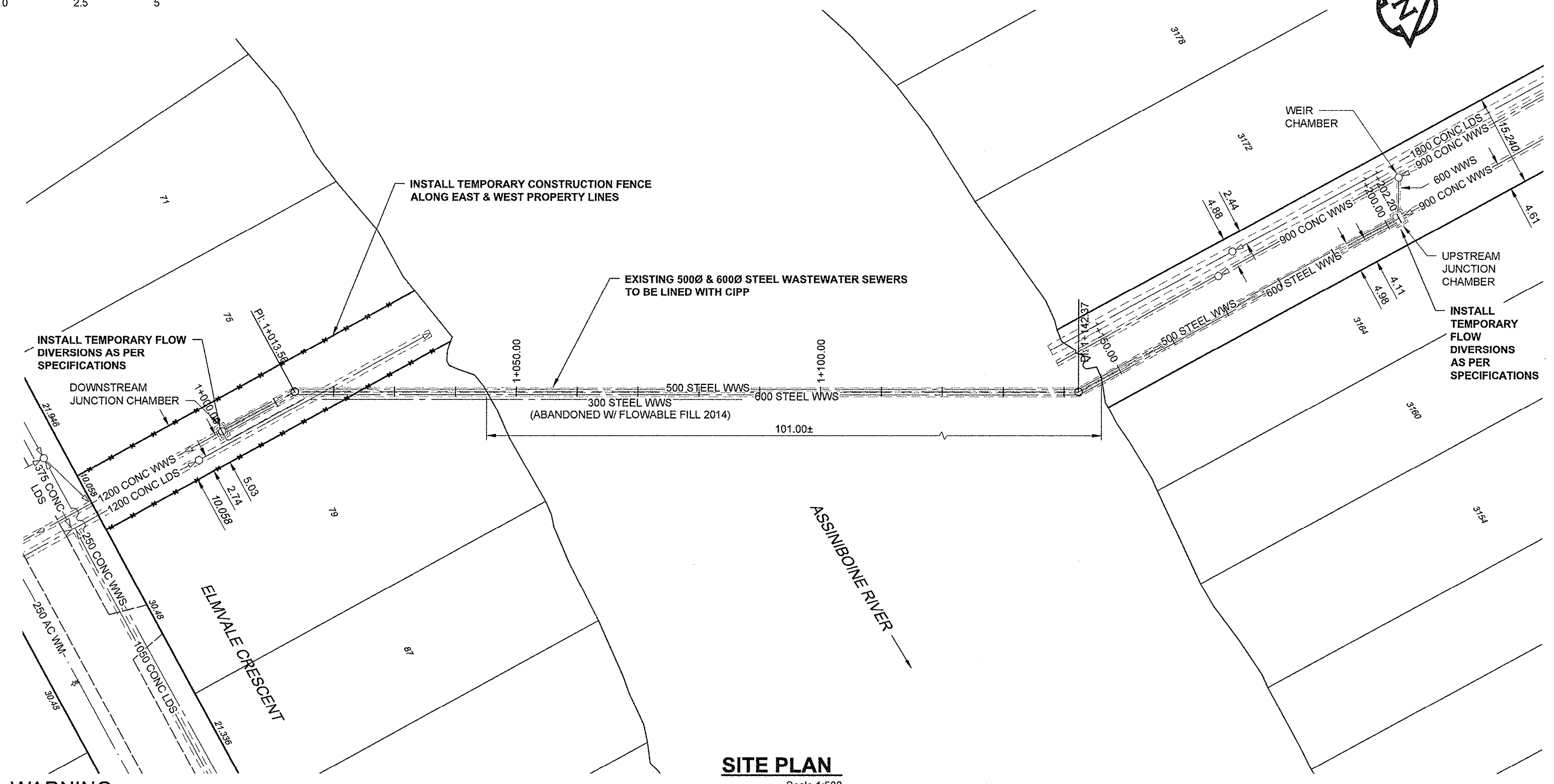
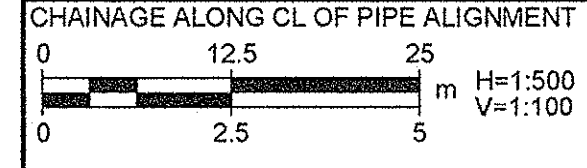
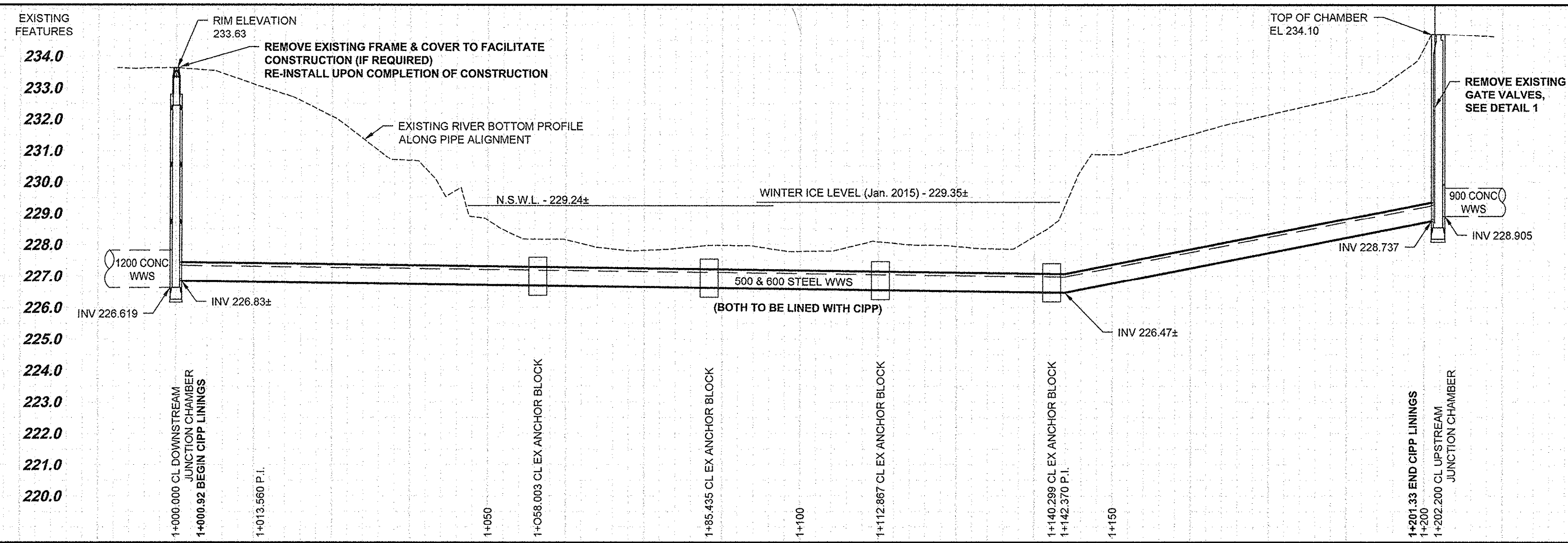


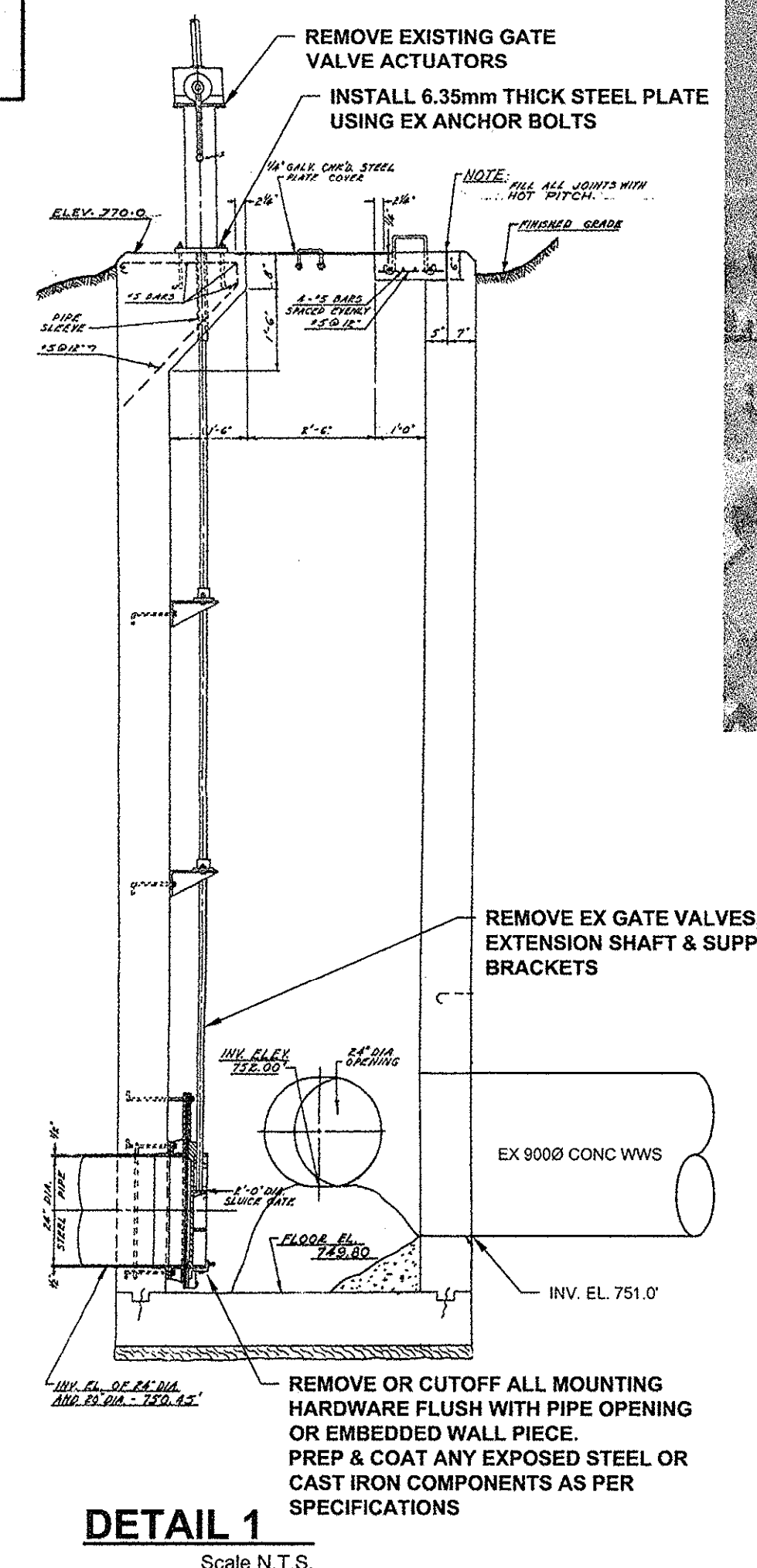
D SIZE 22" x 34" (550mm x 864mm)

PLOT: 3/2/2015 2:44:27 PM

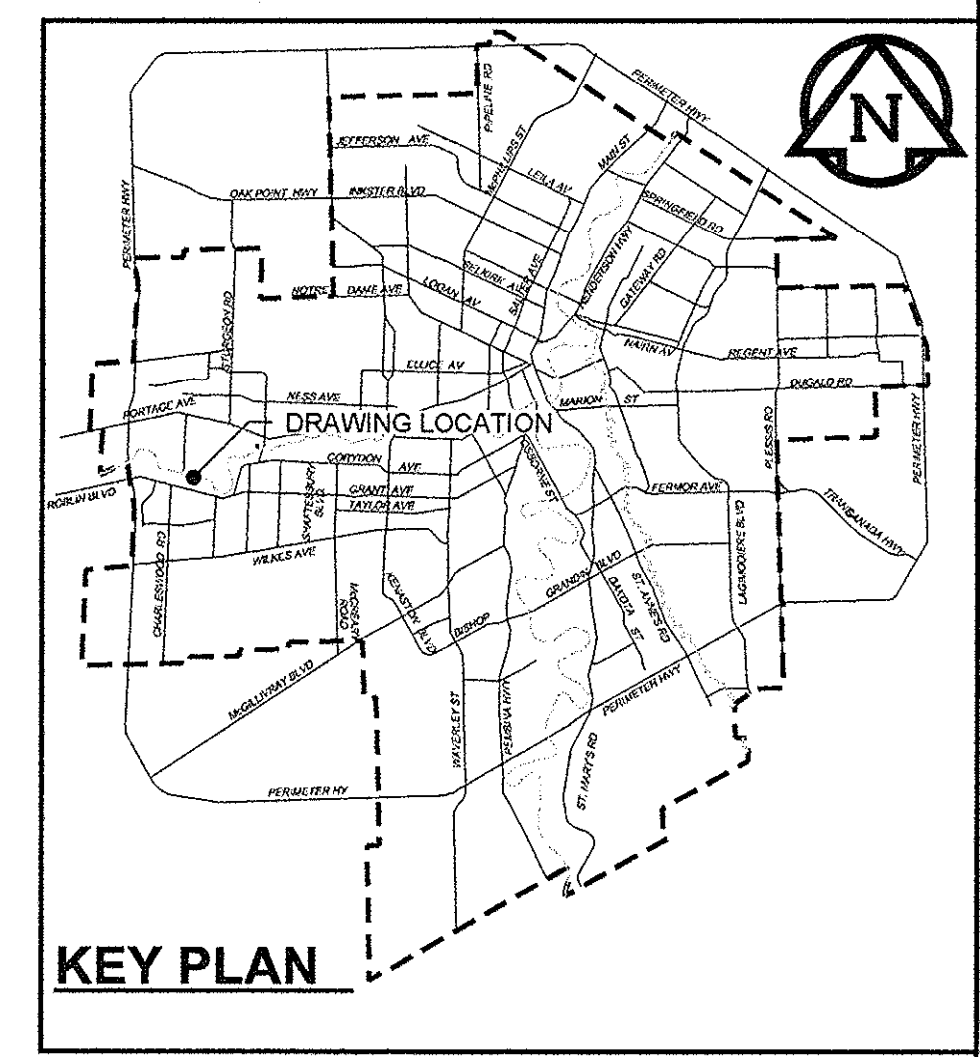
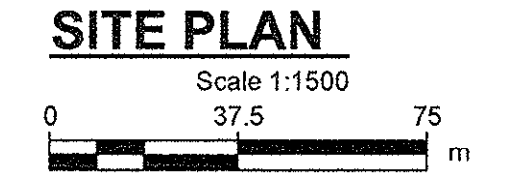
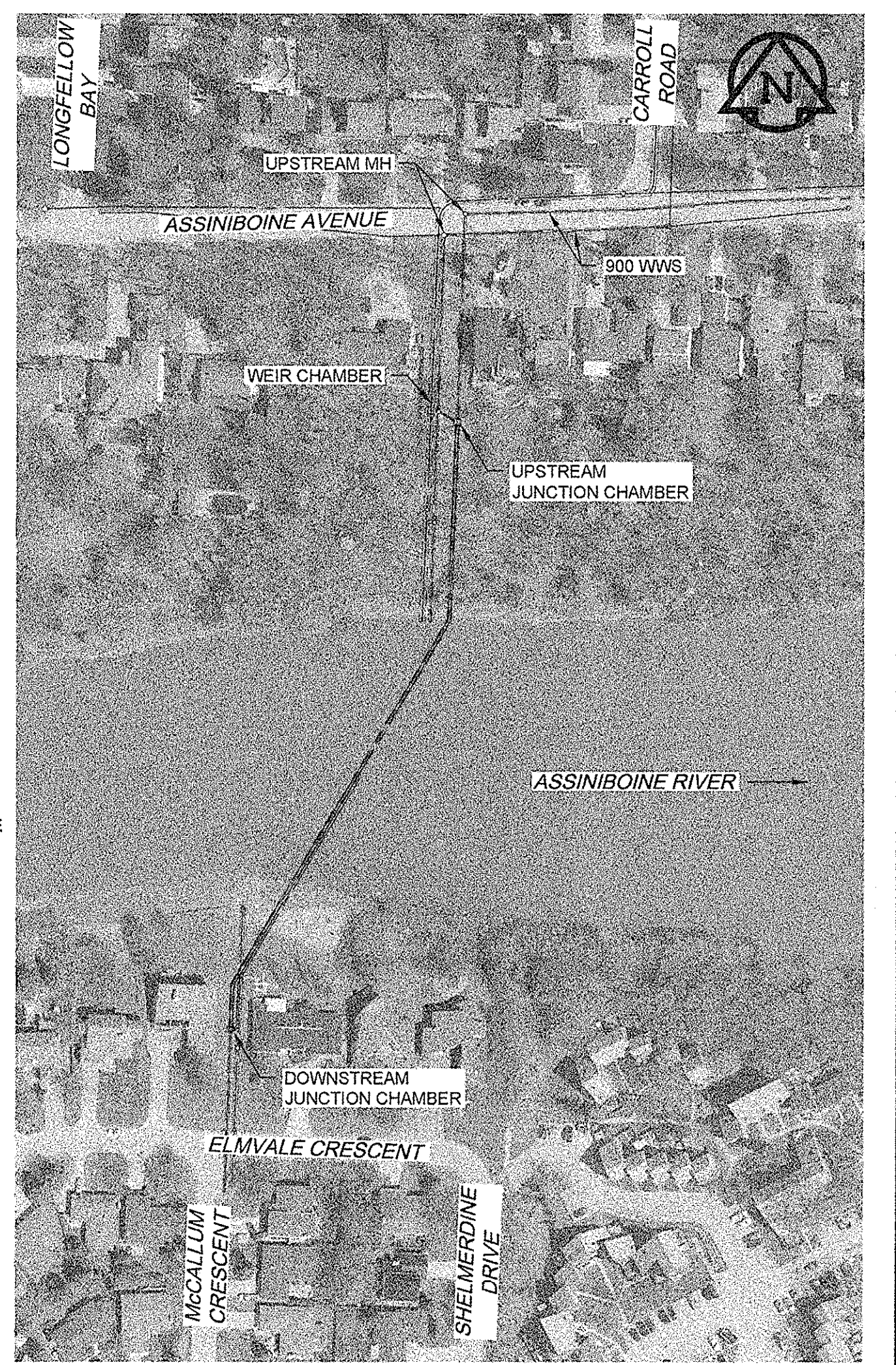
AECOM REVIEW DRAFT CHK AAL
AECOM FILE NAME: 30340-03-SHT-00-0000-C-0008_CIPP - 2014.dwg, Saved By: bjb333



WARNING
IF POWER EQUIPMENT OR EXPLOSIVES ARE TO BE USED FOR EXCAVATION ON THIS PROJECT, THE CONTRACTOR MUST:
1) NOTIFY THE GAS COMPANY OF THE PROPOSED LOCATION OF EXCAVATION.
2) TAKE PRECAUTION TO AVOID DAMAGE TO GAS COMPANY INSTALLATIONS.
SEE PROVINCIAL REGULATION 140/92 FOR DETAILS



DETAIL 1
Scale N.T.S.



KEY PLAN

AECOM
Certificate of Authorization
AECOM Canada Ltd.
No. 4671 Date: Mar 2/15

METRIC
WHOLE NUMBERS INDICATE MILLIMETRES
DECIMAL NUMBERS INDICATE METRES

EXISTING	LEGEND - PLAN	NEW	EXISTING	LEGEND - PLAN	NEW	EXISTING	LEGEND - PROFILE	NEW
150 WM	WATERMAIN	150 WM	150 WM	WATERMAIN	150 WM	150 WM	WATERMAIN	150 WM
300 LDS	LAND DRAINAGE SEWER	300 LDS	300 LDS	LAND DRAINAGE SEWER	300 LDS	300 LDS	LAND DRAINAGE SEWER	300 LDS
250 WWS	WASTE WATER SEWER	250 WWS	250 WWS	WASTE WATER SEWER	250 WWS	250 WWS	WASTE WATER SEWER	250 WWS
○	MANHOLE	●	○	MANHOLE	●	○	MANHOLE	●
□	CATCH BASIN	■	□	CATCH BASIN	■	□	CATCH BASIN	■
△	CURB INLET	▲	△	CURB INLET	▲	△	CURB INLET	▲
⊠	CULVERT	⊡	⊠	CULVERT	⊡	⊠	CULVERT	⊡
+	PIPE ABANDONMENTS	+	+	PIPE ABANDONMENTS	+	+	PIPE ABANDONMENTS	+
+	SURVEY BAR	+	+	SURVEY BAR	+	+	SURVEY BAR	+
+	HYDRANT	+	+	HYDRANT	+	+	HYDRANT	+
+	VALVE	+	+	VALVE	+	+	VALVE	+
+	REDUCER	+	+	REDUCER	+	+	REDUCER	+
+	COUPLING	+	+	COUPLING	+	+	COUPLING	+
+	ANODE	+	+	ANODE	+	+	ANODE	+
+	HYDRO	+	+	HYDRO	+	+	HYDRO	+
+	MTS	+	+	MTS	+	+	MTS	+
+	GAS	+	+	GAS	+	+	GAS	+
+	TESTHOLE	+	+	TESTHOLE	+	+	TESTHOLE	+
+	LAMP STANDARD	+	+	LAMP STANDARD	+	+	LAMP STANDARD	+
+	TREE	+	+	TREE	+	+	TREE	+
+	CURB STOP	+	+	CURB STOP	+	+	CURB STOP	+
+	PAVEMENT CROWN	+	+	PAVEMENT CROWN	+	+	PAVEMENT CROWN	+
+	N/W PROPERTY LINE	+	+	N/W PROPERTY LINE	+	+	N/W PROPERTY LINE	+
+	S/E PROPERTY LINE	+	+	S/E PROPERTY LINE	+	+	S/E PROPERTY LINE	+
+	N/W GUTTER	+	+	N/W GUTTER	+	+	N/W GUTTER	+
+	S/E GUTTER	+	+	S/E GUTTER	+	+	S/E GUTTER	+

LOCATION APPROVED
UNDERGROUND STRUCTURES
SUPR. U/G STRUCTURES COMMITTEE DATE
NOTE:
LOCATION OF UNDERGROUND STRUCTURES AS SHOWN ARE BASED ON THE BEST INFORMATION AVAILABLE. BUT NO GUARANTEE IS GIVEN THAT ALL EXISTING UTILITIES ARE EXACT. CONFIRMATION OF EXISTENCE AND EXACT LOCATION OF ALL SERVICES MUST BE OBTAINED FROM THE INDIVIDUAL UTILITIES BEFORE PROCEEDING WITH CONSTRUCTION.

NO.	ISSUED FOR CONSTRUCTION	DATE	BY
0	ISSUED FOR CONSTRUCTION	15/03/02	KLC
	REVISIONS	YYMMDD	

AECOM	DESIGNED BY: ADB	CHECKED BY:
	DRAWN BY: KLC	APPROVED FOR CONSTRUCTION:
	HOR. SCALE: AS NOTED	RELEASED FOR CONSTRUCTION:
	VERT. SCALE: N/A	DATE: MAR 2/15

PROFESSIONAL'S SEAL
A. D. BRAUN
Member 24453
CONSULTANT DRAWING NO.
60240409-SHT-00-0000-C-0008_CIPP - 2/14

THE CITY OF WINNIPEG WATER AND WASTE DEPARTMENT

ST. JAMES INTERCEPTOR SIPHON REHABILITATION BY CIPP

PLAN / PROFILE

SHEET 1 OF 1
CITY DRAWING NUMBER 10983
REV 0

BID OPPORTUNITY NO. 175-2015