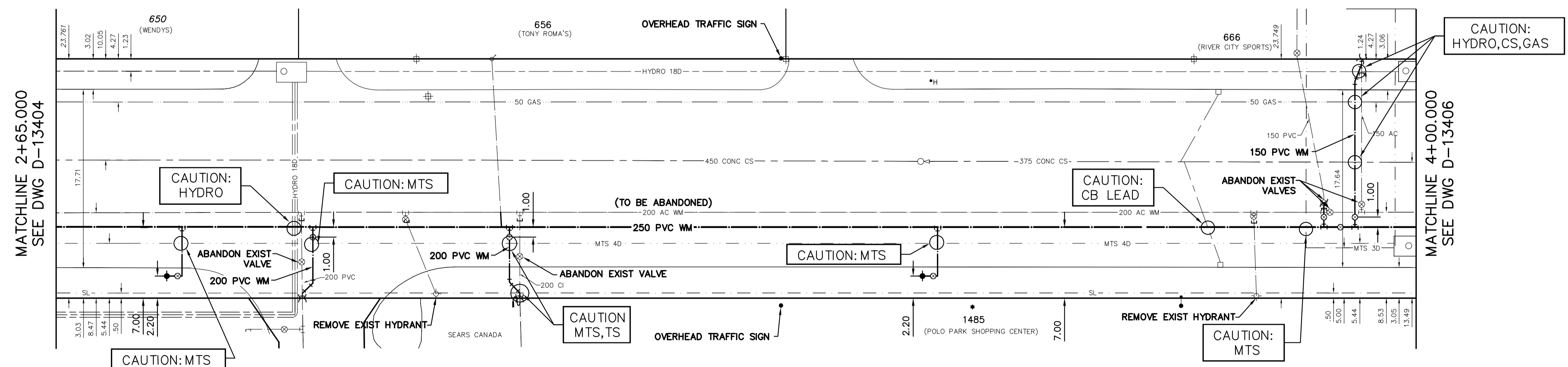
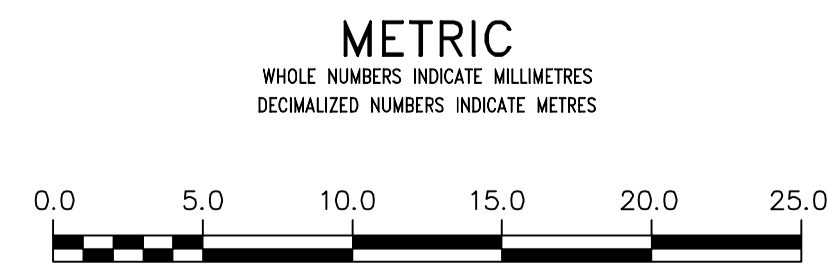


NOTE: CHAINAGES SHOWN ARE ALONG E. R. OF ST JAMES STREET

ST JAMES STREET



FOR INDEX SEE D-13403 FOR WATER SERVICE TABLE SEE DWG D-13408 VALVES COUNTER-CLOCKWISE TO CLOSE (RED OPERATING NUT)



WARNING
IF POWER EQUIPMENT OR EXPLOSIVES ARE TO BE USED FOR EXCAVATION ON THIS PROJECT THE CONTRACTOR MUST:
1) NOTIFY THE GAS COMPANY OF THE PROPOSED LOCATION OF EXCAVATION.
2) TAKE PRECAUTION TO AVOID DAMAGE TO GAS COMPANY INSTALLATIONS.
SEE PROVINCIAL REGULATION 21072 FOR DETAILS

LOCATION APPROVED UNDERGROUND STRUCTURES
SUPV. U/G STRUCTURES COMMITTEE DATE
NOTE: LOCATION OF UNDERGROUND STRUCTURES AS SHOWN ARE BASED ON THE BEST INFORMATION AVAILABLE BUT NO GUARANTEE IS GIVEN THAT ALL EXISTING UTILITIES ARE SHOWN OR THAT THE GIVEN LOCATIONS ARE EXACT. CONFIRMATION OF EXISTENCE AND EXACT LOCATION OF ALL SERVICES MUST BE OBTAINED FROM THE INDIVIDUAL UTILITIES BEFORE PROCEEDING WITH CONSTRUCTION.

B.M. ELEV.			
CONSTRUCTION COMPLETION DATE: YYYY MM DD			
DESIGNED BY	LKC		
CHECKED BY	SC		
DRAWN BY	RS		
APPROVED BY	KZ		
SCALE:			
HORIZONTAL	1:250		
VERTICAL	1:50		
DATE	2015 05 13		
RELEASED FOR CONSTRUCTION			
DATE			
NO.	REVISIONS	DATE	BY

ENGINEER'S SEAL
ORIGINAL SIGNED BY S.J.R. COURNOYER 15/05/13
CONSULTANT DRAWING NUMBER

THE CITY OF WINNIPEG
WATER AND WASTE DEPARTMENT
ENGINEERING DIVISION
2015 WATERMAIN RENEWALS
ST JAMES STREET
165 N OF PORTAGE AVE (N R) TO
39 S OF NESS AVENUE (S R)

SHEET 3 OF 7
CITY DRAWING NUMBER
D-13405