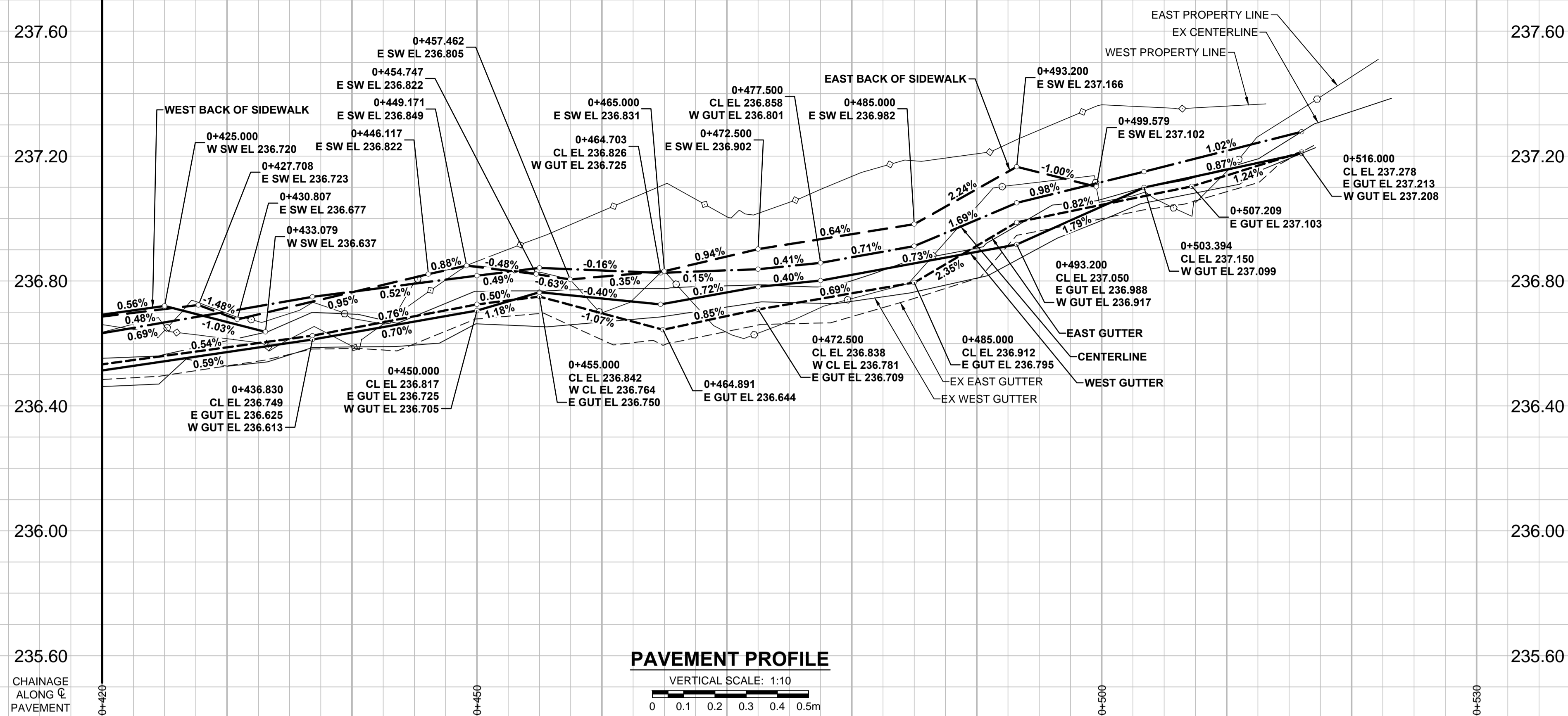


A1 SIZE 594mm x 841mm



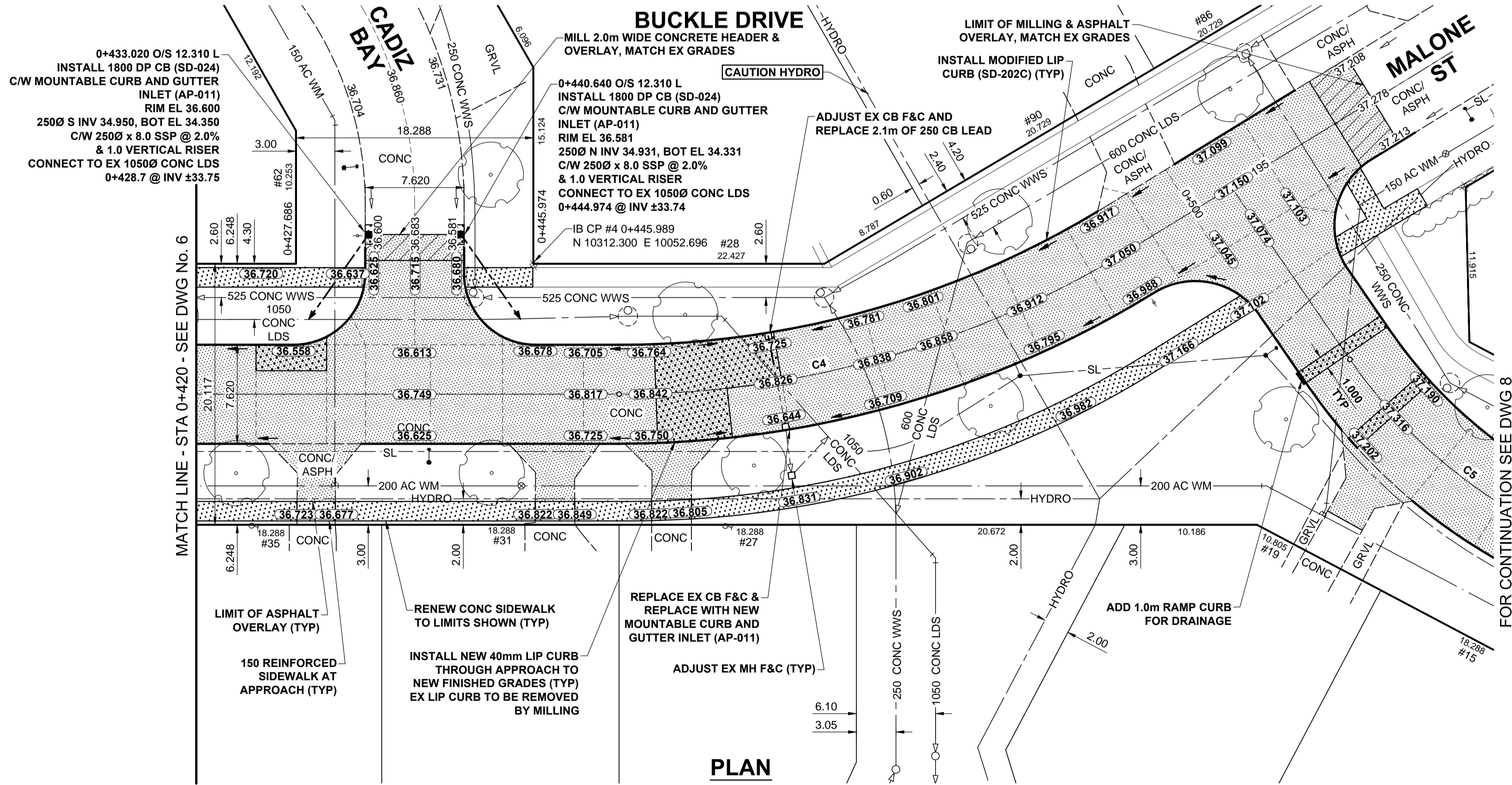
PAVEMENT PROFILE

VERTICAL SCALE: 1:10
0 0.1 0.2 0.3 0.4 0.5m

NOTES

- ADJUST MH AND CB RIMS TO NEW GRADES.
- LAMP STANDARDS, HYDRO POLES, AND ANCHORS THAT REQUIRE TEMPORARY SUPPORT, REMOVAL OR REPLACEMENT, TO BE DONE SO AT THE EXPENSE OF THE CONTRACTOR AS NECESSARY.
- CONTRACTOR TO REGRADE/RENEW EXISTING PRIVATE SIDEWALKS TO LIMITS AS SHOWN. SIDEWALKS TO BE RENEWED WITH CONCRETE UNLESS NOTED OTHERWISE.
- CONTRACTOR TO TAKE PRECAUTIONARY STEPS TO PROTECT EXISTING TREES WITHIN THE LIMITS OF CONSTRUCTION FROM DAMAGE FROM CONSTRUCTION ACTIVITIES AS OUTLINED IN THE SPECIFICATIONS.
- CONTRACTOR TO CONFIRM THE LOCATION OF ALL UTILITIES/SERVICES IN THE FIELD PRIOR TO CONSTRUCTION.
- MODIFIED BARRIER CURB TO BE USED AT ALL INTERSECTION RADII, BACK LANE RADII AND BULLNOSES.
- CONTRACTOR TO OVERLAY DRIVEWAYS TO ENSURE POSITIVE DRAINAGE TO NEW STREET GRADES. FINAL LIMITS TO BE DETERMINED IN THE FIELD BY CONTRACT ADMINISTRATOR.
- CB SD-023 & SD-024 OFFSETS ARE DIMENSIONED TO BOC. CB SD-025 OFFSETS ARE DIMENSIONED O/C.
- REFER TO BID OPPORTUNITY FOR DETAILS REGARDING TRAFFIC MANAGEMENT.
- ADD 200.000m TO ABBREVIATED ELEVATIONS TO OBTAIN GEODETIC ELEVATIONS.

FILE NAME: W150003.Buckle-PP-04.dwg Saved By: diane



PLAN

SCALE: 1:250
0 5 10 15m

CONTROL LINE - COORDINATES		
NAME	NORTHING	EASTING
PT 0+326.703	10205.875	9997.909
PC 0+452.596	10312.630	10064.635
PT 0+493.902	10351.790	10076.034
POT 0+503.195	10361.083	10076.107

CONTROL LINE - CURVES				
CURVE	RADIUS	LENGTH	DELTA	TANGENT
C4	75.000	41.305	31°33'18"	21.191

METRIC
WHOLE NUMBERS INDICATE MILLIMETRES
DECIMALIZED NUMBERS INDICATE METRES

EXISTING	LEGEND - PLAN	NEW	EXISTING	LEGEND - PLAN	NEW	EXISTING	LEGEND - PLAN	NEW
○	GAS	○	MANHOLE	●	CONCRETE PAVEMENT	▨	CONC SIDEWALK / MEDIAN	▨
□	MTS	□	CATCH BASIN / CATCH PIT	■	ASPHALT PAVEMENT	▨	ASPHALT PAVEMENT	▨
—	HYDRO	—	CURB INLET WITH BOX	▲	PAVING STONE	▨	GRAVEL	▨
—	CATV / FIBRE OPTIC	—	TREE	—	RAMP CURB	▨	PLANING / REMOVAL	▨
—	TRAFFIC SIGNALS / PIT	—	TEST HOLE	—	LOCATION APPROVED	—	UNDERGROUND STRUCTURES	—
—	LAND DRAINAGE SEWER	—	PROPERTY LINE	—	SUPR. U/G STRUCTURES	—	DATE	—
—	SANITARY/COMBINED SEWER	—	SURVEY BAR	—	COMMITTEE	—	NOTE:	—
—	SEWER SERV/DRAINAGE CONN	—	FENCE	—	LOCATION OF UNDERGROUND STRUCTURES AS SHOWN ARE BASED ON THE BEST INFORMATION AVAILABLE. BUT NO GUARANTEE IS GIVEN THAT ALL EXISTING UTILITIES ARE SHOWN OR THAT THE GIVEN LOCATIONS ARE EXACT. CONFIRMATION OF EXISTENCE AND EXACT LOCATION OF ALL SERVICES MUST BE OBTAINED FROM THE INDIVIDUAL UTILITIES BEFORE PROCEEDING WITH CONSTRUCTION.	—	BY	—
—	WATERMAIN	—	BOC / EDGE OF PAVEMENT	—		—		—
—	SUBDRAIN	—	ELEVATION	—		—		—
—	DITCH	—	TRAFFIC SIGN	—		—		—

B	ISSUED FOR TENDER	15/04/20	RPB
A	ISSUED FOR CITY REVIEW	15/04/28	RPB
No.	REVISIONS	YYMMDD	BY

DESIGNED BY	RPB	CHECKED BY	WRJ
DRAWN BY	DML	APPROVED BY	BWB
HOR. SCALE	1:250	RELEASED FOR CONSTRUCTION	
VERT. SCALE	1:10	DATE	15/04/28

PROFESSIONAL'S SEAL
PROVINCE OF MANITOBA
REGISTERED PROFESSIONAL ENGINEER
R.P. BRUCE
CONSULTANT DRAWING No. W150003.Buckle-PP-04.dwg

THE CITY OF WINNIPEG
PUBLIC WORKS DEPARTMENT
ENGINEERING DIVISION
2015 LOCAL STREET & ALLEY RENEWAL PROGRAM
BUCKLE DRIVE
BETSWORTH AV TO CARLOTTA CR
REHABILITATION
HORIZONTAL AND VERTICAL ALIGNMENT
STA 0+420 TO STA 0+530

CITY DRAWING NUMBER N/A
SHEET 7 OF 31
DRAWING No. 7
REV B

APEGM
Certificate of Authorization
MORRISON HERSHFELD
No. 1736

BID OPPORTUNITY No. 18-2015