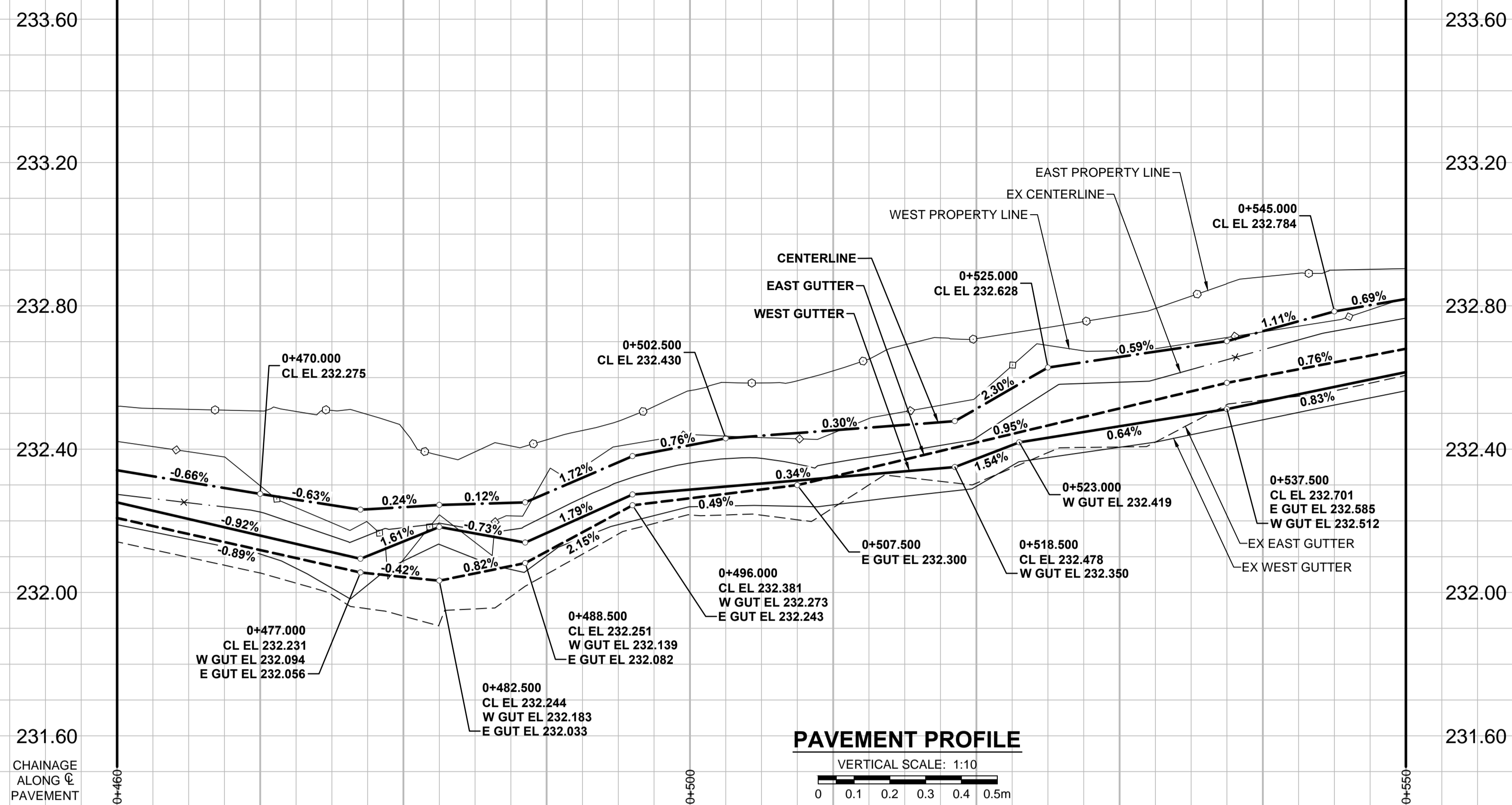


A1 SIZE 594mm x 841mm

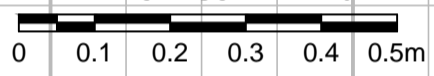
PLOT: 4/29/2015 6:03:17 PM

FILE NAME: W150003.Greyfriars-PP-04.dwg, Saved By: diane



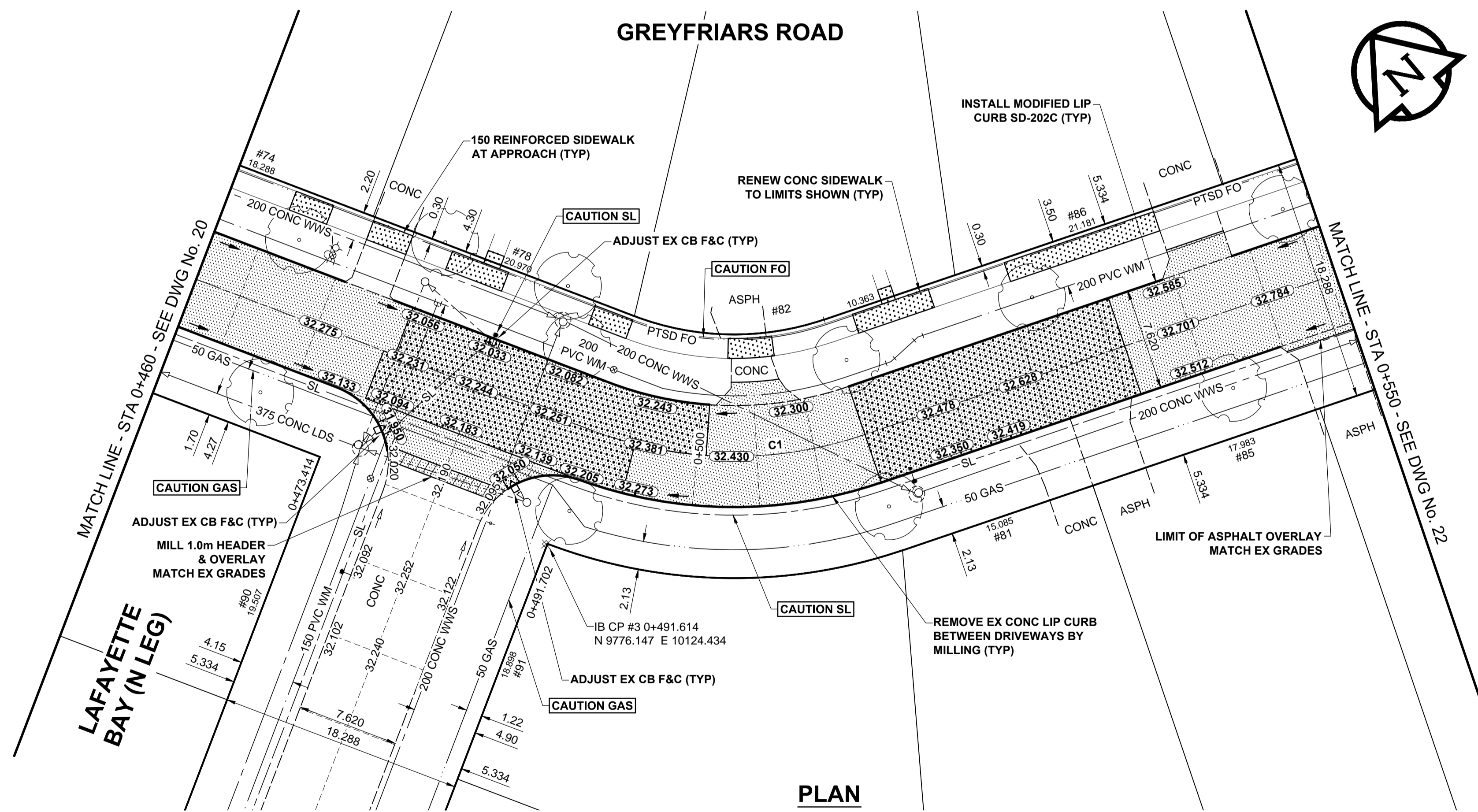
PAVEMENT PROFILE

VERTICAL SCALE: 1:10



NOTES

- ADJUST MH AND CB RIMS TO NEW GRADES.
- LAMP STANDARDS, HYDRO POLES, AND ANCHORS THAT REQUIRE TEMPORARY SUPPORT, REMOVAL OR REPLACEMENT, TO BE DONE SO AT THE EXPENSE OF THE CONTRACTOR AS NECESSARY.
- REGRADE/RENEW EXISTING PRIVATE SIDEWALKS TO LIMITS AS SHOWN. SIDEWALKS TO BE RENEWED WITH CONCRETE UNLESS NOTED OTHERWISE.
- TAKE PRECAUTIONARY STEPS TO PROTECT EXISTING TREES WITHIN THE LIMITS OF CONSTRUCTION FROM DAMAGE FROM CONSTRUCTION ACTIVITIES AS OUTLINED IN THE SPECIFICATIONS.
- CONFIRM THE LOCATION OF ALL UTILITIES/SERVICES IN THE FIELD PRIOR TO CONSTRUCTION.
- MODIFIED BARRIER CURB TO BE USED AT ALL INTERSECTION RADII, BACK LANE RADII AND BULLNOSES.
- OVERLAY DRIVEWAYS TO ENSURE POSITIVE DRAINAGE TO NEW STREET GRADES. FINAL LIMITS TO BE DETERMINED IN THE FIELD BY CONTRACT ADMINISTRATOR.
- CB SD-023 & SD-024 OFFSETS ARE DIMENSIONED TO BOC. CB SD-025 OFFSETS ARE DIMENSIONED O/C.
- REFER TO BID OPPORTUNITY FOR DETAILS REGARDING TRAFFIC MANAGEMENT.
- ADD 200.000m TO ABBREVIATED ELEVATIONS TO OBTAIN GEODETIC ELEVATIONS.



PLAN

SCALE: 1:250

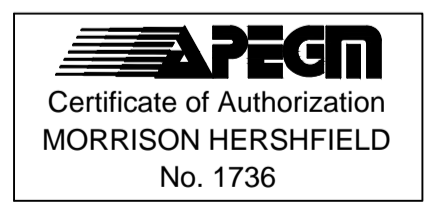


METRIC
WHOLE NUMBERS INDICATE MILLIMETRES
DECIMALIZED NUMBERS INDICATE METRES

	GAS		MANHOLE		CONCRETE PAVEMENT	LOCATION APPROVED UNDERGROUND STRUCTURES	GBM 82-014 ELEV 233.134	S.E. Cor. Dalhousie Dr. & St. Edmund's Bay, 7th. W. W. Conc. foundation of No. 3 St. Edmund's Bay, 3.0 m S. & 0.3 m below street of N.W. Cor. of most W. wall of house.
	MTS		CATCH BASIN / CATCH PIT		CONC SIDEWALK / MEDIAN			
	HYDRO		CURB INLET WITH BOX		ASPHALT PAVEMENT			
	CATV / FIBRE OPTIC		TREE		PAVING STONE			
	TRAFFIC SIGNALS / PIT		TEST HOLE		GRAVEL			
	LAND DRAINAGE SEWER		PROPERTY LINE		RAMP CURB			
	SANITARY/COMBINED SEWER		SURVEY BAR		PLANING / REMOVAL			
	SEWER SERV/DRAINAGE CONN		FENCE					
	WATERMAIN		BOC / EDGE OF PAVEMENT					
	SUBDRAIN		ELEVATION (33.100)					
	DITCH		TRAFFIC SIGN					
	EXISTING		LEGEND - PLAN		EXISTING			
	NEW		LEGEND - PLAN		NEW			

CONTROL LINE - COORDINATES		
NAME	NORTHING	EASTING
POT 0+100.000	10122.804	9942.019
PC 0+491.702	9780.549	10132.523
PT 0+512.562	9767.121	10147.941
POT 0+650.000	9717.397	10276.069

CONTROL LINE - CURVES				
CURVE	RADIUS	LENGTH	DELTA	TANGENT
C1	30.114	20.860	39°41'20"	10.868



BID OPPORTUNITY No. 18-2015

DESIGNED BY	WRJ	CHECKED BY	RPB
DRAWN BY	DML	APPROVED BY	BWB
HOR. SCALE	1:250	RELEASED FOR CONSTRUCTION	
VERT. SCALE	1:10		
DATE	15/04/28	DATE	

B	ISSUED FOR TENDER	15/04/30	RPB
A	ISSUED FOR CITY REVIEW	15/04/28	RPB
No.	REVISIONS	YYMMDD	BY

CONSULTANT DRAWING No.
W150003 Greyfriars-PP-04.dwg

THE CITY OF WINNIPEG
PUBLIC WORKS DEPARTMENT
ENGINEERING DIVISION

2015 LOCAL STREET & ALLEY RENEWAL PROGRAM
GREYFRIARS ROAD
KILLARNEY AV TO DALHOUSIE DR
REHABILITATION
HORIZONTAL AND VERTICAL ALIGNMENT
STA 0+460 TO STA 0+550

CITY DRAWING NUMBER: N/A
SHEET 21 OF 31
DRAWING No. 21
REV B