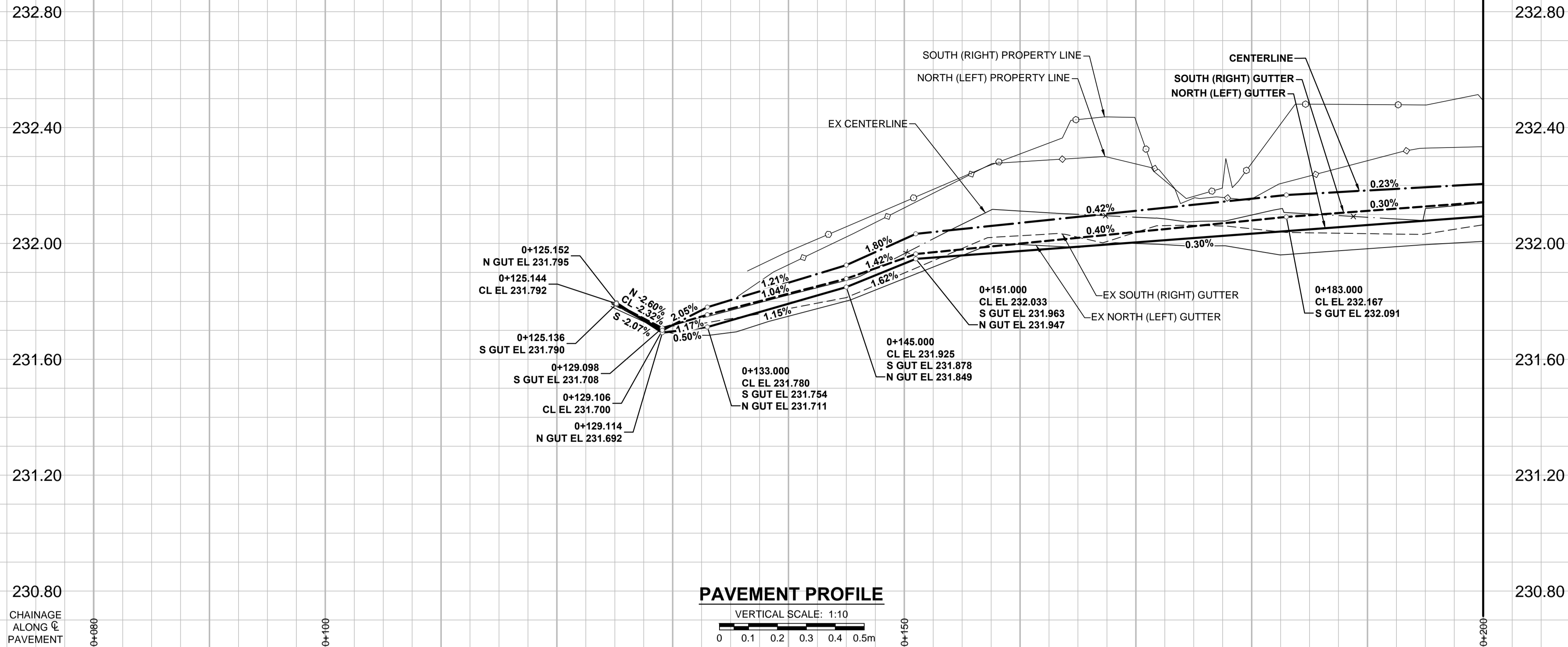


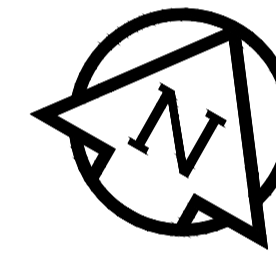
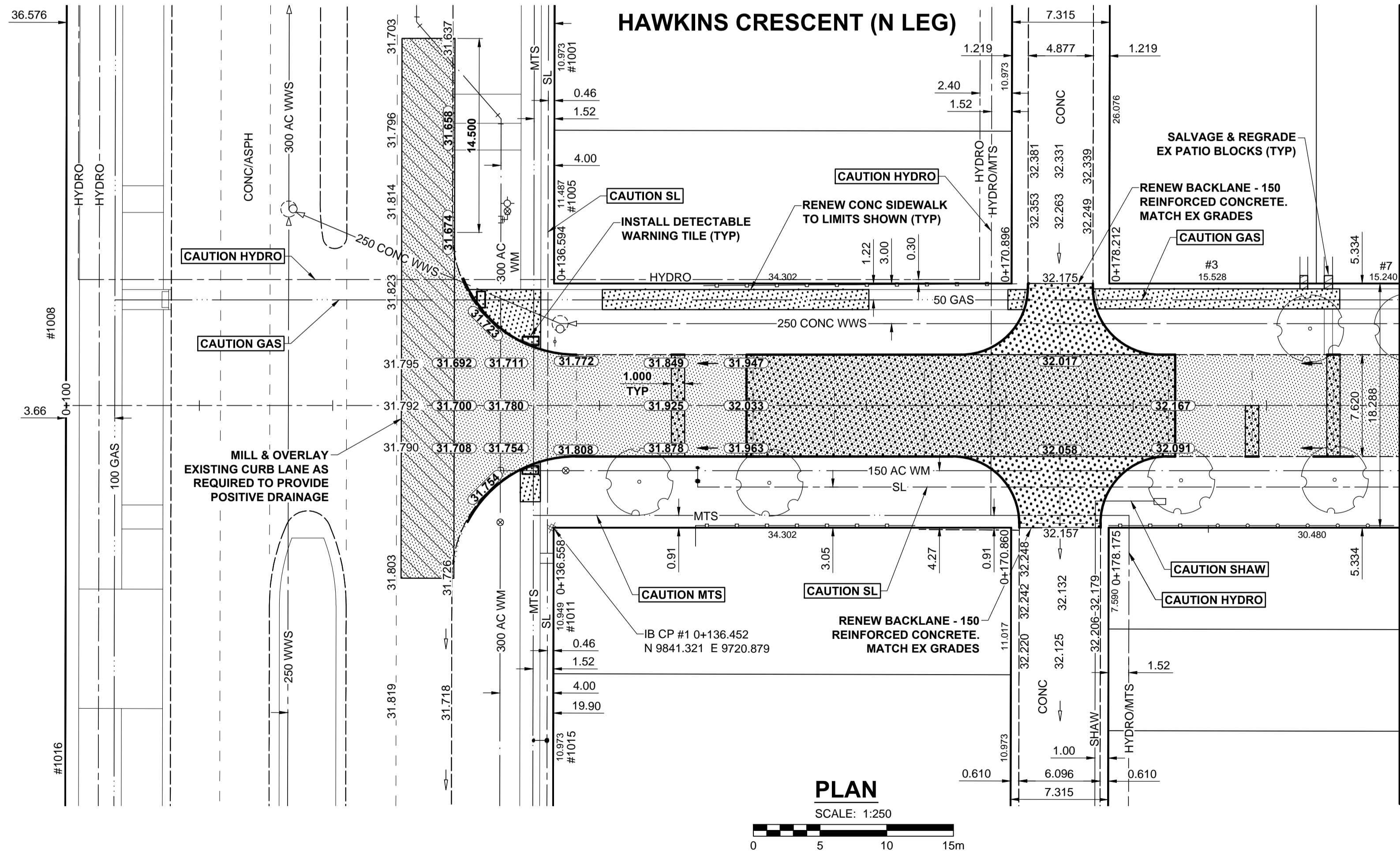
A1 SIZE 594mm x 841mm



PILOT: 4/29/2015 6:06:23 PM

DAKOTA ST

STERLING MENNONITE FELLOWSHIP



NOTES

- ADJUST MH AND CB RIMS TO NEW GRADES.
- LAMP STANDARDS, HYDRO POLES, AND ANCHORS THAT REQUIRE TEMPORARY SUPPORT, REMOVAL OR REPLACEMENT, TO BE DONE SO AT THE EXPENSE OF THE CONTRACTOR AS NECESSARY.
- CONTRACTOR TO REGRADE/RENEW EXISTING PRIVATE SIDEWALKS TO LIMITS AS SHOWN. SIDEWALKS TO BE RENEWED WITH CONCRETE UNLESS NOTED OTHERWISE.
- CONTRACTOR TO TAKE PRECAUTIONARY STEPS TO PROTECT EXISTING TREES WITHIN THE LIMITS OF CONSTRUCTION FROM DAMAGE FROM CONSTRUCTION ACTIVITIES AS OUTLINED IN THE SPECIFICATIONS.
- CONTRACTOR TO CONFIRM THE LOCATION OF ALL UTILITIES/SERVICES IN THE FIELD PRIOR TO CONSTRUCTION.
- MODIFIED BARRIER CURB TO BE USED AT ALL INTERSECTION RADII, BACK LANE RADII AND BULLNOSES.
- CONTRACTOR TO OVERLAY DRIVEWAYS TO ENSURE POSITIVE DRAINAGE TO NEW STREET GRADES. FINAL LIMITS TO BE DETERMINED IN THE FIELD BY CONTRACT ADMINISTRATOR.
- CB SD-023 & SD-024 OFFSETS ARE DIMENSIONED TO BOC. CB SD-025 OFFSETS ARE DIMENSIONED O/C.
- REFER TO BID OPPORTUNITY FOR DETAILS REGARDING TRAFFIC MANAGEMENT.
- ADD 200.000m TO ABBREVIATED ELEVATIONS TO OBTAIN GEODETIC ELEVATIONS.

CONTROL LINE - COORDINATES		
NAME	NORTHING	EASTING
POT 0+100.000	9831.255	9684.671
PC 0+453.715	10006.067	9992.169

METRIC
WHOLE NUMBERS INDICATE MILLIMETRES
DECIMALIZED NUMBERS INDICATE METRES

FILE NAME: W150003-Hawkins-PP-01.dwg, Saved By: dliane

	GAS		MANHOLE		CONCRETE PAVEMENT	LOCATION APPROVED UNDERGROUND STRUCTURES SUPR. U/G STRUCTURES DATE COMMITTEE NOTE: LOCATION OF UNDERGROUND STRUCTURES AS SHOWN ARE BASED ON THE BEST INFORMATION AVAILABLE. BUT NO GUARANTEE IS GIVEN THAT ALL EXISTING UTILITIES ARE SHOWN OR THAT THE GIVEN LOCATIONS ARE EXACT. CONFIRMATION OF EXISTENCE AND EXACT LOCATION OF ALL SERVICES MUST BE OBTAINED FROM THE INDIVIDUAL UTILITIES BEFORE PROCEEDING WITH CONSTRUCTION.
	HYDRO		CATCH BASIN / CATCH PIT		CONC SIDEWALK / MEDIAN	
	CATV / FIBRE OPTIC		CURB INLET WITH BOX		ASPHALT PAVEMENT	
	TRAFFIC SIGNALS / PIT		TREE		PAVING STONE	
	LAND DRAINAGE SEWER		TEST HOLE		GRAVEL	
	SANITARY/COMBINED SEWER		PROPERTY LINE		RAMP CURB	
	SEWER SERV/DRAINAGE CONN		SURVEY BAR		PLANING / REMOVAL	
	WATERMAIN		FENCE			
	SUBDRAIN		BOC / EDGE OF PAVEMENT			
	DITCH		ELEVATION (33.100)			
	EXISTING		TRAFFIC SIGN			
	LEGEND - PLAN		NEW			

GBM 62-024	ELEV 232.503	15/04/30	RPB
B	ISSUED FOR TENDER	15/04/30	RPB
A	ISSUED FOR CITY REVIEW	15/04/28	RPB
No.	REVISIONS	YYMMDD	BY

DESIGNED BY	WRJ
CHECKED BY	RPB
DRAWN BY	DML
APPROVED BY	BWB
HOR. SCALE	1:250
VERT. SCALE	1:10
DATE	15/04/28

PROFESSIONAL'S SEAL
 PROVINCE OF MANITOBA
 R.P. BRUCE
 REGISTERED PROFESSIONAL ENGINEER
 CONSULTANT DRAWING No.
 W150003-Hawkins-PP-01.dwg

THE CITY OF WINNIPEG
 PUBLIC WORKS DEPARTMENT
 ENGINEERING DIVISION
 2015 LOCAL STREET & ALLEY RENEWAL PROGRAM
HAWKINS CRESCENT
 DAKOTA ST TO NOVAVISTA DR
 REHABILITATION
 HORIZONTAL AND VERTICAL ALIGNMENT
 STA 0+080 TO STA 0+200

CITY DRAWING NUMBER N/A
 SHEET 26 OF 31
 DRAWING No. 26
 REV B

BID OPPORTUNITY No. 18-2015