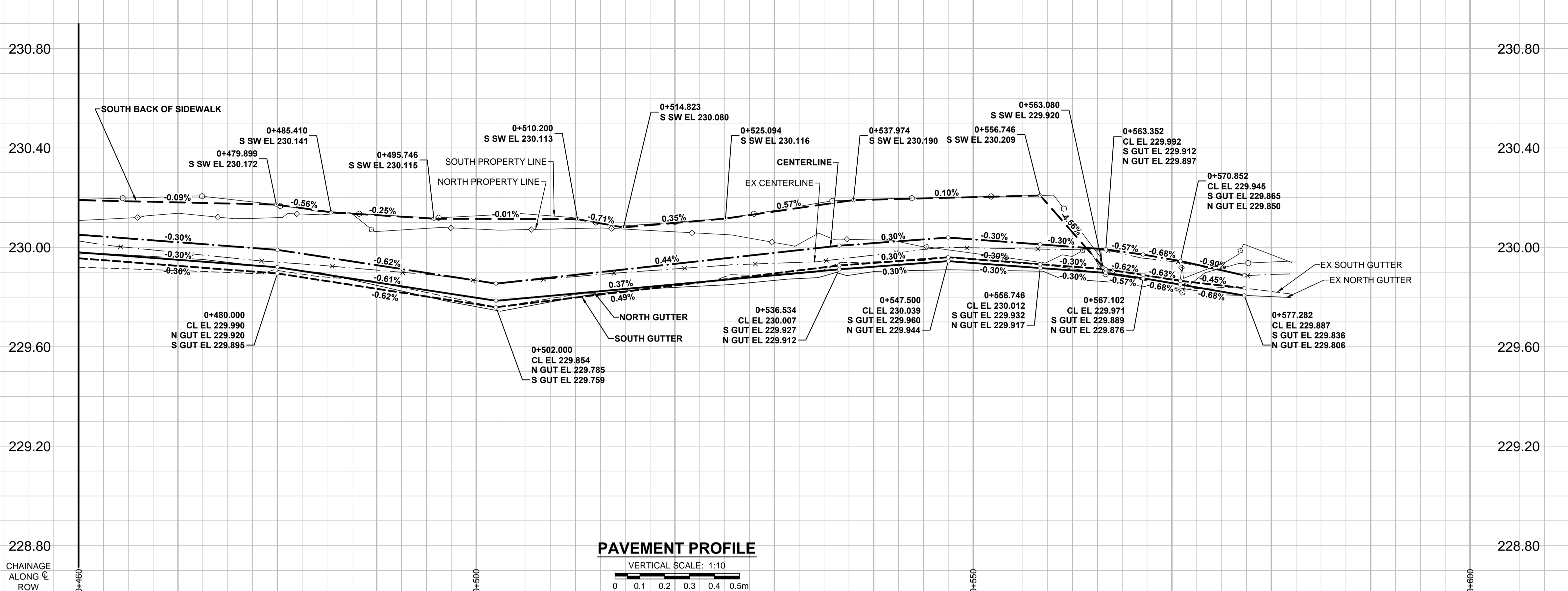
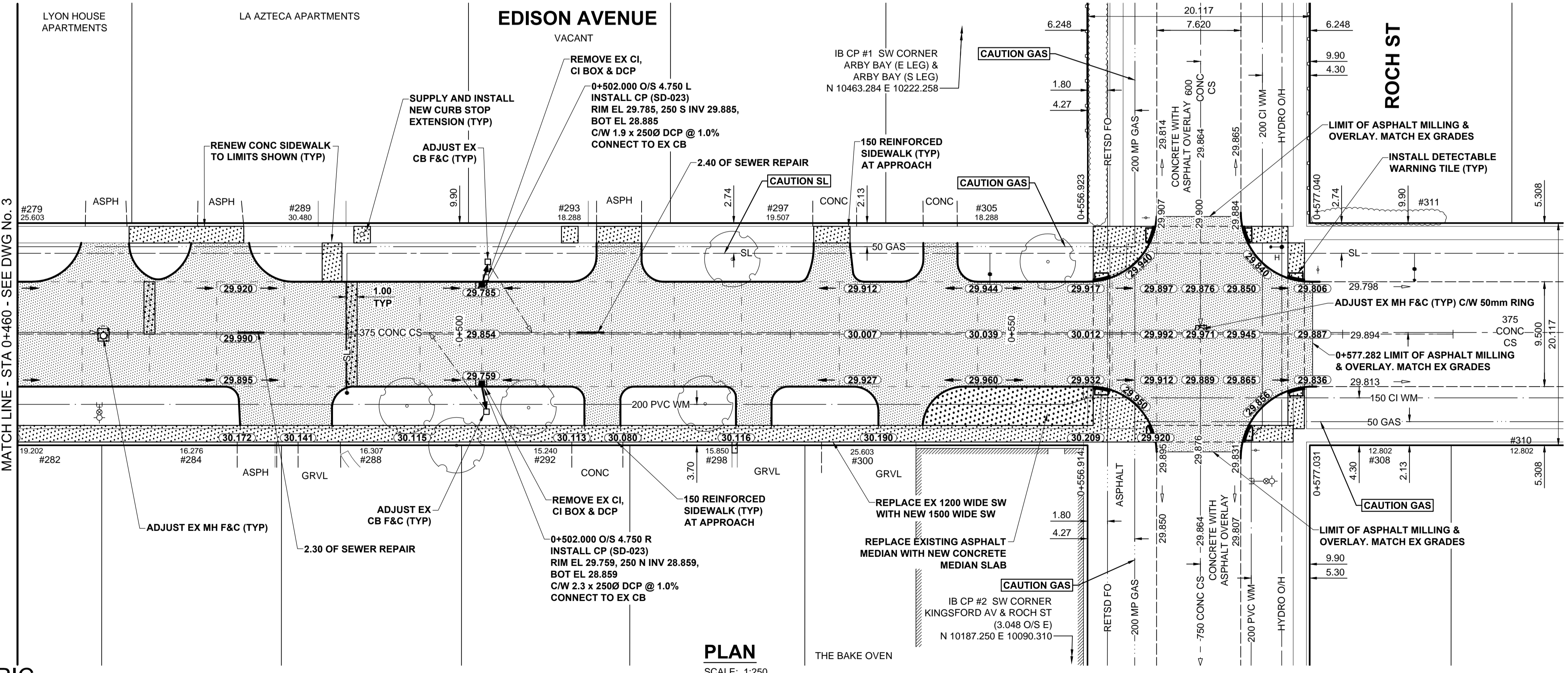


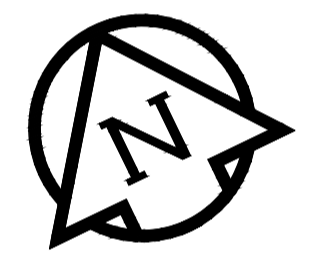
FILE NAME: W150004-Edison-PP-04.dwg Saved By: diane
 PLOT: 3/31/2015 11:34:12 AM
 A1 SIZE 594mm x 841mm



PAVEMENT PROFILE
 VERTICAL SCALE: 1:10
 0 0.1 0.2 0.3 0.4 0.5m



PLAN
 SCALE: 1:250
 0 5 10 15m



- NOTES**
- ADJUST MH AND CB RIMS TO NEW GRADES.
 - LAMP STANDARDS, HYDRO POLES, AND ANCHORS THAT REQUIRE TEMPORARY SUPPORT, REMOVAL OR REPLACEMENT, TO BE DONE SO AT THE EXPENSE OF THE CONTRACTOR AS NECESSARY.
 - CONTRACTOR TO REGRADE/RENEW EXISTING PRIVATE SIDEWALKS TO LIMITS AS SHOWN. SIDEWALKS TO BE RENEWED WITH CONCRETE UNLESS NOTED OTHERWISE.
 - CONTRACTOR TO TAKE PRECAUTIONARY STEPS TO PROTECT EXISTING TREES WITHIN THE LIMITS OF CONSTRUCTION FROM DAMAGE FROM CONSTRUCTION ACTIVITIES AS OUTLINED IN THE SPECIFICATIONS.
 - CONTRACTOR TO CONFIRM THE LOCATION OF ALL UTILITIES/SERVICES IN THE FIELD PRIOR TO CONSTRUCTION.
 - MODIFIED BARRIER CURB TO BE USED AT ALL INTERSECTION RADII, BACK LANE RADII AND BULLNOSES.
 - CONTRACTOR TO OVERLAY DRIVEWAYS TO ENSURE POSITIVE DRAINAGE TO NEW STREET GRADES. FINAL LIMITS TO BE DETERMINED IN THE FIELD BY CONTRACT ADMINISTRATOR.
 - CB SD-023 & SD-024 OFFSETS ARE DIMENSIONED TO BOC. CB SD-025 OFFSETS ARE DIMENSIONED O.C.
 - ADD 200.000m TO ABBREVIATED ELEVATIONS TO OBTAIN GEODETIC ELEVATIONS.
 - REFER TO BID OPPORTUNITY FOR DETAILS REGARDING TRAFFIC MANAGEMENT.

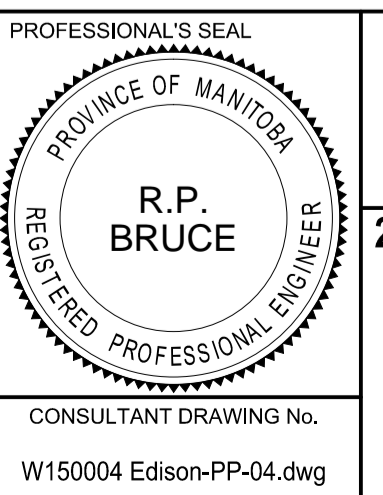
CONTROL LINE - COORDINATES		
NAME	NORTHING	EASTING
POT 0+110.000	10478.385	9731.108
POT 0+590.000	10269.839	10163.437

METRIC
 WHOLE NUMBERS INDICATE MILLIMETRES
 DECIMALIZED NUMBERS INDICATE METRES

EXISTING	LEGEND - PLAN	NEW	EXISTING	LEGEND - PLAN	NEW	EXISTING	LEGEND - PLAN	NEW	
	GAS		MANHOLE		CONCRETE PAVEMENT		LOCATION APPROVED		GAS
	MTS		CATCH BASIN / CATCH PIT		CONC SIDEWALK / MEDIAN		UNDERGROUND STRUCTURES		HYDRO
	HYDRO		CURB INLET WITH BOX		ASPHALT PAVEMENT		SUPR. UG STRUCTURES		CATV / FIBRE OPTIC
	CATV / FIBRE OPTIC		TREE		PAVING STONE		DATE		TRAFFIC SIGNALS / PIT
	TRAFFIC SIGNALS / PIT		TEST HOLE		GRAVEL		NOTE:		LAND DRAINAGE SEWER
	LAND DRAINAGE SEWER		PROPERTY LINE		RAMP CURB		LOCATION OF UNDERGROUND STRUCTURES AS SHOWN ARE BASED ON THE BEST INFORMATION AVAILABLE. BUT NO GUARANTEE IS GIVEN THAT ALL EXISTING UTILITIES ARE SHOWN OR THAT THE GIVEN LOCATIONS ARE EXACT. CONFIRMATION OF EXISTENCE AND EXACT LOCATION OF ALL SERVICES MUST BE OBTAINED FROM THE INDIVIDUAL UTILITIES BEFORE PROCEEDING WITH CONSTRUCTION.		SANITARY/COMBINED SEWER
	SANITARY/COMBINED SEWER		SURVEY BAR		PLANING / REMOVAL		COMMITTEE		SEWER SER/ DRAINAGE CONN
	SEWER SER/ DRAINAGE CONN		FENCE		WATERMAIN		ELEVATION		SUBDRAIN
	WATERMAIN		BOC / EDGE OF PAVEMENT		DITCH		TRAFFIC SIGN		EXISTING
	SUBDRAIN		BOC / EDGE OF PAVEMENT		LEGEND - PLAN		LEGEND - PLAN		NEW
	DITCH		LEGEND - PLAN		LEGEND - PLAN		LEGEND - PLAN		LEGEND - PLAN

GBM 12-031	N.E. Cor. Edison Ave. & Roch St. 3.0m on top of 0.05 m dia. x 2.4 m iron pipe, 3.0 m S. of N.L. of Edison Ave. & on E.L. of Roch St.
A	ISSUED FOR CITY REVIEW
B	ISSUED FOR TENDER
No.	REVISIONS
15/03/16	R.P.B.
15/03/16	R.P.B.
YYMMDD	BY

MORRISON HERSHFIELD	
DESIGNED BY	R.P.B.
CHECKED BY	W.R.J.
DRAWN BY	D.M.L.
APPROVED BY	B.W.B.
HOR. SCALE	1:250
VERT. SCALE	1:10
DATE	15/03/16
RELEASED FOR CONSTRUCTION	



THE CITY OF WINNIPEG
 PUBLIC WORKS DEPARTMENT
 ENGINEERING DIVISION

2015 LOCAL STREET & ALLEY RENEWAL PROGRAM
EDISON AVENUE
 HENDERSON HWY TO ROCH ST
 REHABILITATION
 HORIZONTAL AND VERTICAL ALIGNMENT
 STA 0+460 TO STA 0+600

CITY DRAWING NUMBER: N/A
 SHEET 4 OF 39
 DRAWING No. 4
 REV B

CONSULTANT DRAWING No. W150004 Edison-PP-04.dwg

BID OPPORTUNITY No. 19-2015