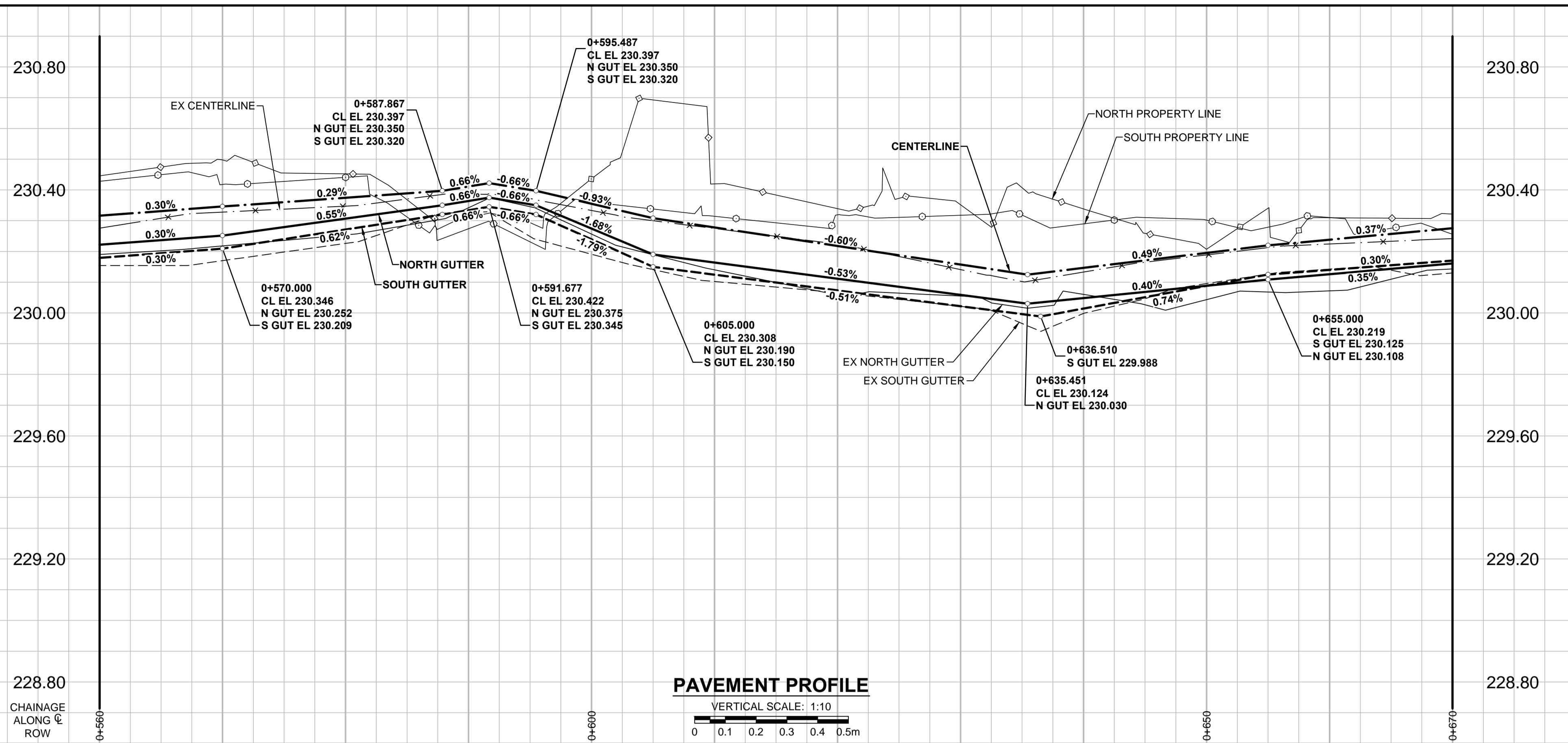
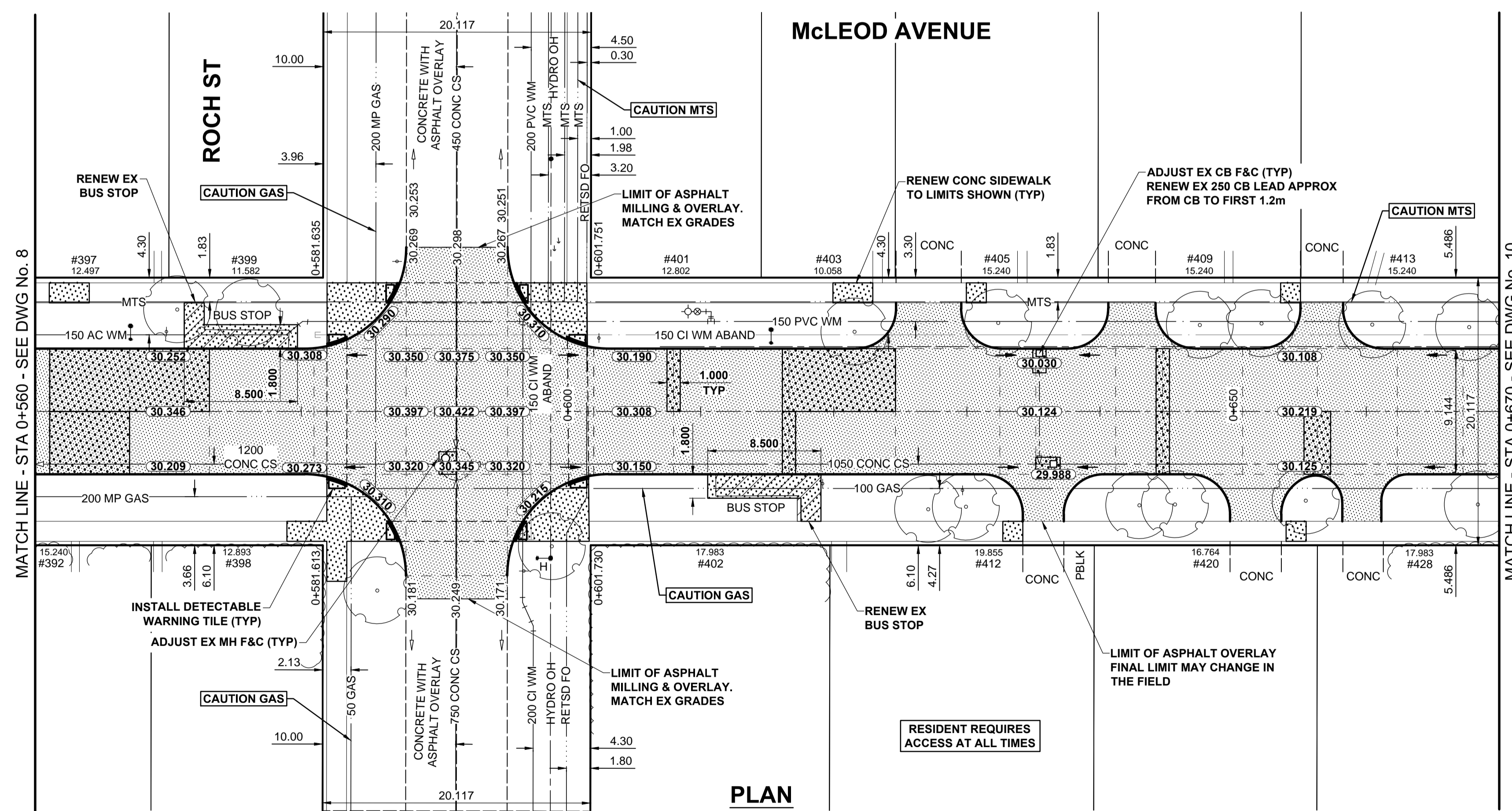


A1 SIZE 594mm x 841mm



PLOT: 3/31/2015 11:37:39 AM

FILE NAME: W150004-McLeod-PP-05.dwg Saved By: diane



- NOTES**
- ADJUST MH AND CB RIMS TO NEW GRADES.
 - LAMP STANDARDS, HYDRO POLES, AND ANCHORS THAT REQUIRE TEMPORARY SUPPORT, REMOVAL OR REPLACEMENT, TO BE DONE SO AT THE EXPENSE OF THE CONTRACTOR AS NECESSARY.
 - CONTRACTOR TO REGRADE/RENEW EXISTING PRIVATE SIDEWALKS TO LIMITS AS SHOWN. SIDEWALKS TO BE RENEWED WITH CONCRETE UNLESS NOTED OTHERWISE.
 - CONTRACTOR TO TAKE PRECAUTIONARY STEPS TO PROTECT EXISTING TREES WITHIN THE LIMITS OF CONSTRUCTION FROM DAMAGE FROM CONSTRUCTION ACTIVITIES AS OUTLINED IN THE SPECIFICATIONS.
 - CONTRACTOR TO CONFIRM THE LOCATION OF ALL UTILITIES/SERVICES IN THE FIELD PRIOR TO CONSTRUCTION.
 - MODIFIED BARRIER CURB TO BE USED AT ALL INTERSECTION RADII, BACK LANE RADII AND BULLNOSES.
 - CONTRACTOR TO OVERLAY DRIVEWAYS TO ENSURE POSITIVE DRAINAGE TO NEW STREET GRADES. FINAL LIMITS TO BE DETERMINED IN THE FIELD BY CONTRACT ADMINISTRATOR.
 - CB SD-023 & SD-024 OFFSETS ARE DIMENSIONED TO BOC. CB SD-025 OFFSETS ARE DIMENSIONED O/C.
 - ADD 200.000m TO ABBREVIATED ELEVATIONS TO OBTAIN GEODETIC ELEVATIONS.
 - REFER TO BID OPPORTUNITY FOR DETAILS REGARDING TRAFFIC MANAGEMENT.

METRIC
WHOLE NUMBERS INDICATE MILLIMETRES
DECIMALIZED NUMBERS INDICATE METRES

---	GAS	○	MANHOLE	●	CONCRETE PAVEMENT
---	MTS	□	CATCH BASIN / CATCH PIT	■	CONC SIDEWALK / MEDIAN
---	HYDRO	△	CURB INLET WITH BOX	▲	ASPHALT PAVEMENT
---	CATV / FIBRE OPTIC	○	TREE	■	PAVING STONE
---	TRAFFIC SIGNALS / PIT	○	TEST HOLE	■	GRAVEL
---	LAND DRAINAGE SEWER	○	PROPERTY LINE	---	RAMP CURB
---	SANITARY/COMBINED SEWER	○	SURVEY BAR	---	PLANING / REMOVAL
---	SEWER SERV/DRAINAGE CONN	○	FENCE	---	
---	WATERMAIN	○	BOC / EDGE OF PAVEMENT	---	
---	SUBDRAIN	33.000	ELEVATION	(33.100)	
---	DITCH	---	TRAFFIC SIGN	(33.100)	
---	EXISTING	---	LEGEND - PLAN	---	
---	NEW	---	LEGEND - PLAN	---	

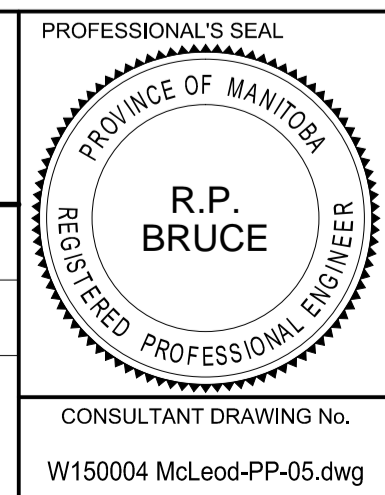
LOCATION APPROVED UNDERGROUND STRUCTURES

SUPR, U/G STRUCTURES DATE COMMITTEE

NOTE:
LOCATION OF UNDERGROUND STRUCTURES AS SHOWN ARE BASED ON THE BEST INFORMATION AVAILABLE. BUT NO GUARANTEE IS GIVEN THAT ALL EXISTING UTILITIES ARE SHOWN OR THAT THE GIVEN LOCATIONS ARE EXACT. CONFIRMATION OF EXISTENCE AND EXACT LOCATION OF ALL SERVICES MUST BE OBTAINED FROM THE INDIVIDUAL UTILITIES BEFORE PROCEEDING WITH CONSTRUCTION.

GBM 12-038	S/W. Cor. McLeod Bay & McLeod Ave. The top of 300m dia. x 2.4m dia. ELEV 230.273	206.03 m N. of W. wall & 107 m E. of E. wall of No. 1 Manhole Bay, or 6.1 m N. of S.L. of McLeod Ave. produced from the E. & 6.0 m E. of W.L. of Railway St.
B	ISSUED FOR TENDER	15/03/16 RPB
A	ISSUED FOR CITY REVIEW	15/03/16 RPB
No.	REVISIONS	YYMMDDI BY

MORRISON HERSHFELD	
DESIGNED BY RPB	CHECKED BY WRJ
DRAWN BY DML	APPROVED BY BWB
HOR. SCALE 1:250	RELEASED FOR CONSTRUCTION
VERT. SCALE 1:10	
DATE 15/03/16	DATE



THE CITY OF WINNIPEG
PUBLIC WORKS DEPARTMENT
ENGINEERING DIVISION

2015 LOCAL STREET & ALLEY RENEWAL PROGRAM
McLEOD AVENUE
HENDERSON HWY TO MELNESS BAY
REHABILITATION
HORIZONTAL AND VERTICAL ALIGNMENT
STA 0+560 TO STA 0+670

CITY DRAWING NUMBER N/A
SHEET 9 OF 39
DRAWING No. 9
REV B

BID OPPORTUNITY No. 19-2015

