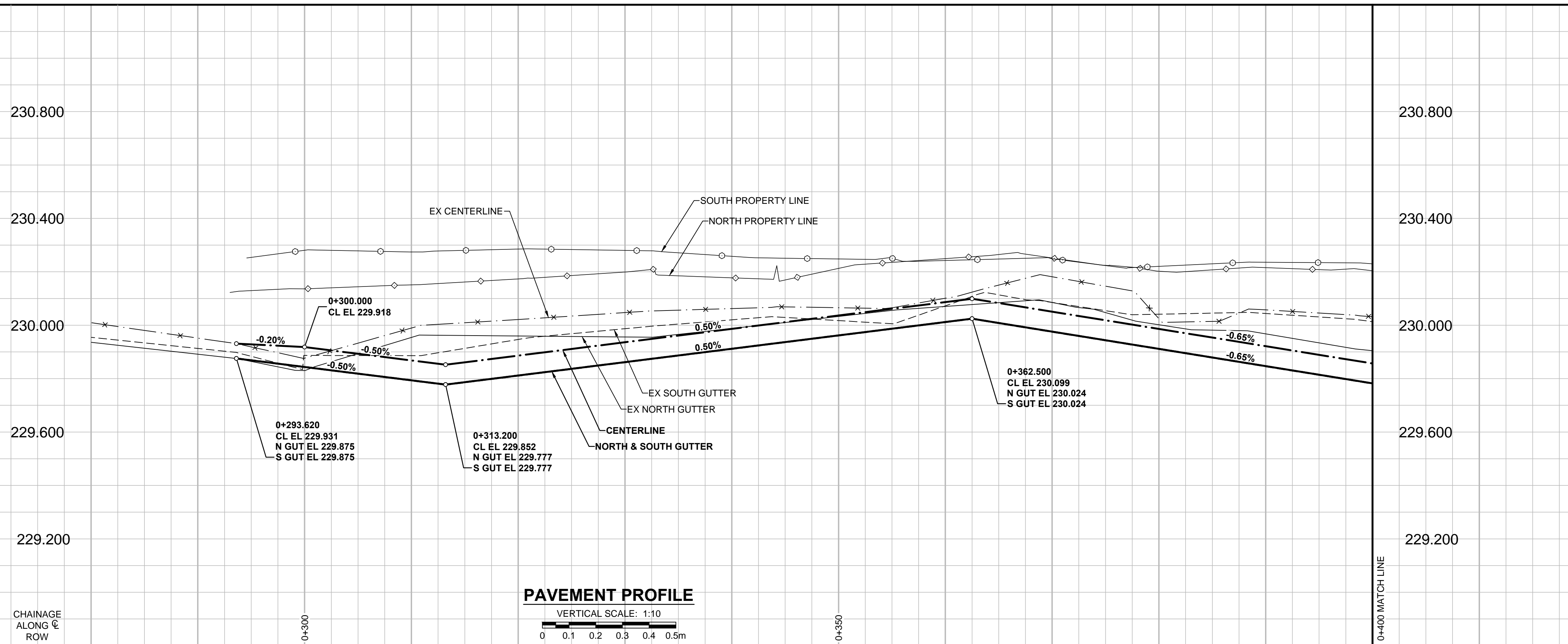


A1 SIZE 594mm x 841mm

PLOT: 3/31/2015 11:40:30 AM

FILE NAME: W150004.Chelsea-PP-02.dwg Saved By: diane

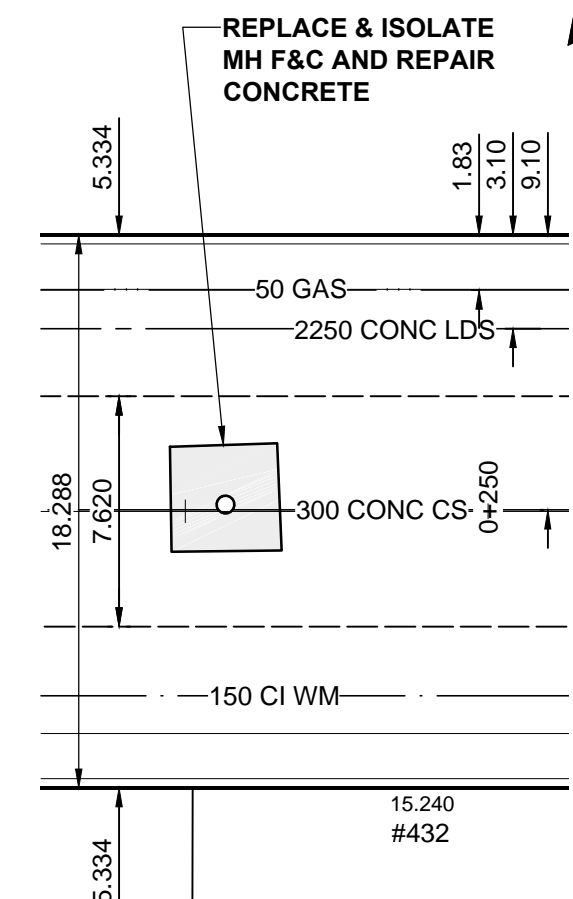
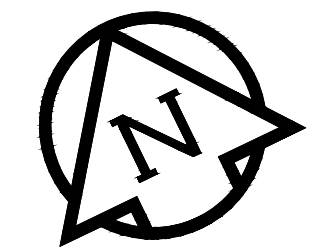


PAVEMENT PROFILE
VERTICAL SCALE: 1:10

- NOTES**
- ADJUST MH AND CB RIMS TO NEW GRADES.
 - LAMP STANDARDS, HYDRO POLES, AND ANCHORS THAT REQUIRE TEMPORARY SUPPORT, REMOVAL OR REPLACEMENT, TO BE DONE SO AT THE EXPENSE OF THE CONTRACTOR AS NECESSARY.
 - CONTRACTOR TO REGRADE/RENEW EXISTING PRIVATE SIDEWALKS TO LIMITS AS SHOWN. SIDEWALKS TO BE RENEWED WITH CONCRETE UNLESS NOTED OTHERWISE.
 - CONTRACTOR TO TAKE PRECAUTIONARY STEPS TO PROTECT EXISTING TREES WITHIN THE LIMITS OF CONSTRUCTION FROM DAMAGE FROM CONSTRUCTION ACTIVITIES AS OUTLINED IN THE SPECIFICATIONS.
 - CONTRACTOR TO CONFIRM THE LOCATION OF ALL UTILITIES/SERVICES IN THE FIELD PRIOR TO CONSTRUCTION.
 - CB SD-023 & SD-024 OFFSETS ARE DIMENSIONED TO BOC. CB SD-025 OFFSETS ARE DIMENSIONED O/C.
 - ADD 200.000m TO ABBREVIATED ELEVATIONS TO OBTAIN GEODETIC ELEVATIONS.
 - IN GENERAL, PAVEMENT AND SIDEWALK AREAS TO BE REMOVED. MATCH RECONSTRUCTION LIMITS.
 - REFER TO BID OPPORTUNITY FOR DETAILS REGARDING TRAFFIC MANAGEMENT.

CHELSEA AVENUE

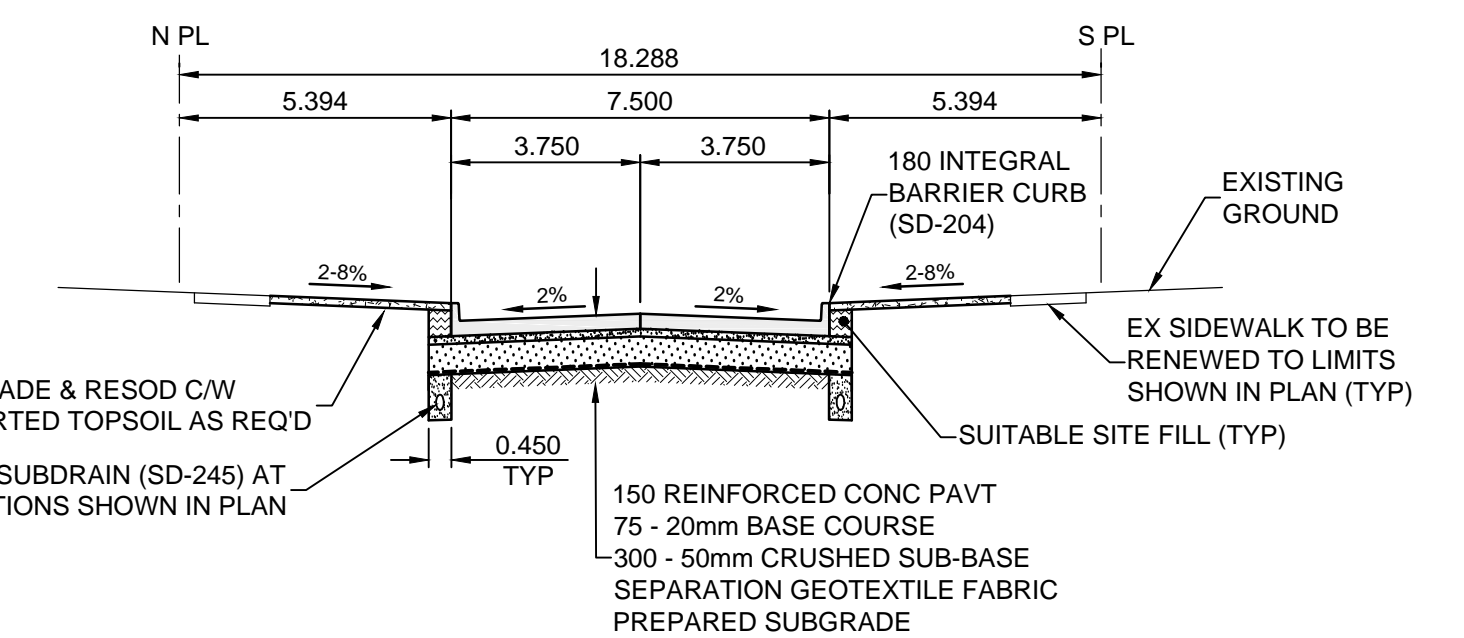
MILES MACDONELL COLLEGIATE



CONCRETE PAVEMENT REPAIR

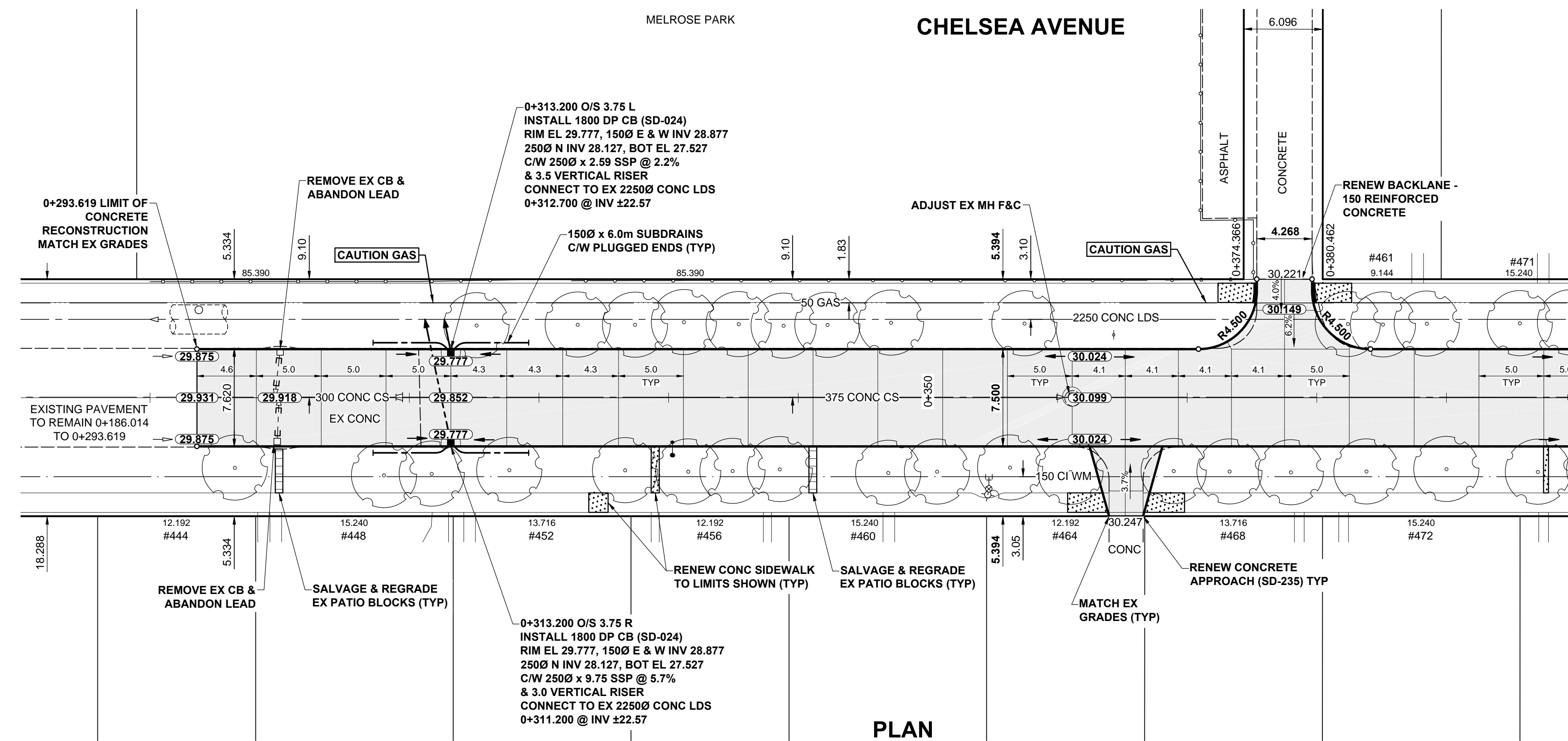
STA 0+242.000 (ACROSS FROM HOUSE # 432, CHELSEA AV)

SCALE: 1:250



TYPICAL PAVEMENT SECTION

CONCRETE PAVEMENT STRUCTURE
SCALE: NTS



PLAN

SCALE: 1:250



METRIC

WHOLE NUMBERS INDICATE MILLIMETRES
DECIMALIZED NUMBERS INDICATE METRES

EXISTING	LEGEND - PLAN	NEW	EXISTING	LEGEND - PLAN	NEW	EXISTING	LEGEND - PLAN	NEW
○	GAS	○	MANHOLE	●	CONCRETE PAVEMENT	□	CATCH BASIN / CATCH PIT	■
—	MTS	□	CATCH BASIN / CATCH PIT	▲	CONC SIDEWALK / MEDIAN	△	CURB INLET WITH BOX	■
—	HYDRO	△	CURB INLET WITH BOX	▲	ASPHALT PAVEMENT	○	TREE	▲
—	CATV / FIBRE OPTIC	○	TREE	▲	PAVING STONE	○	TEST HOLE	▲
—	TRAFFIC SIGNALS / PIT	○	TEST HOLE	▲	GRAVEL	○	PROPERTY LINE	▲
—	LAND DRAINAGE SEWER	○	PROPERTY LINE	▲	RAMP CURB	○	SURVEY BAR	▲
—	SANITARY/COMBINED SEWER	○	SURVEY BAR	▲	PLANING / REMOVAL	○	FENCE	▲
—	SEWER SERV/DRAINAGE CONN	○	FENCE	▲		○	BOC / EDGE OF PAVEMENT	▲
—	WATERMAIN	○	BOC / EDGE OF PAVEMENT	▲		○	ELEVATION	▲
—	SUBDRAIN	○	ELEVATION	▲		○	TRAFFIC SIGN	▲
—	DITCH	○	TRAFFIC SIGN	▲		○		▲

LOCATION APPROVED UNDERGROUND STRUCTURES

SUPR, U/G STRUCTURES DATE COMMITTEE
NOTE: LOCATION OF UNDERGROUND STRUCTURES AS SHOWN ARE BASED ON THE BEST INFORMATION AVAILABLE. BUT NO GUARANTEE IS GIVEN THAT ALL EXISTING UTILITIES ARE SHOWN OR THAT THE GIVEN LOCATIONS ARE EXACT. CONFIRMATION OF EXISTENCE AND EXACT LOCATION OF ALL SERVICES MUST BE OBTAINED FROM THE INDIVIDUAL UTILITIES BEFORE PROCEEDING WITH CONSTRUCTION.

GBM 12-062	N.E. Cor. Watt St. & Kimberly Ave., Tth. on top of 0.05 m dia. x 2.4
ELEV 230.128	non pipe, 0.3 m W. of E.L. of Watt St. & on N.E. of Kimberly Ave.
B	ISSUED FOR TENDER 15/03/16 GFC
A	ISSUED FOR CITY REVIEW 15/03/16 GFC
No.	REVISIONS YYMMDDI BY

MORRISON HERSHFELD

DESIGNED BY GFC CHECKED BY RPB
DRAWN BY DML APPROVED BY BWB

HOR. SCALE 1:250
VERT. SCALE 1:10

DATE 15/03/16

PROFESSIONAL'S SEAL
PROVINCE OF MANITOBA
G.F. COOLIDGE
Member 24465
REGISTERED PROFESSIONAL ENGINEER

CONSULTANT DRAWING No.
W150004 Chelsea-PP-02.dwg

THE CITY OF WINNIPEG
PUBLIC WORKS DEPARTMENT
ENGINEERING DIVISION

2015 LOCAL STREET & ALLEY RENEWAL PROGRAM
CHELSEA AVENUE
ROCH ST TO WATT ST
CONCRETE RECONSTRUCTION
HORIZONTAL AND VERTICAL ALIGNMENT
STA 0+280 TO STA 0+400

CITY DRAWING NUMBER N/A
SHEET 14 OF 39
DRAWING No. 14 REV B

APEGM
Certificate of Authorization
MORRISON HERSHFELD
No. 1736

BID OPPORTUNITY No. 19-2015